

NO. OF COPIES RECEIVED	6
DISTRIBUTION	
SANTA FE	1
FILE	1
U.S.G.S.	2
LAND OFFICE	1
OPERATOR	1

NEW MEXICO OIL CONSERVATION COMMISSION

Form C-101

Revised 1-65 30-045-20874

APPLICATION FOR PERMIT TO DRILL, DEEPEN, OR PLUG BACK

1a. Type of Work DRILL <input checked="" type="checkbox"/> DEEPEN <input type="checkbox"/> PLUG BACK <input type="checkbox"/>		7. Unit Agreement Name Huerfano Unit	
b. Type of Well OIL WELL <input type="checkbox"/> GAS WELL <input checked="" type="checkbox"/> OTHER <input type="checkbox"/>		8. Farm or Lease Name Huerfano Unit	
2. Name of Operator El Paso Natural Gas Company		9. Well No. 227	
3. Address of Operator PO Box 990, Farmington, NM 87401		10. Field and Pool, or Wildcat Basin Dakota	
4. Location of Well UNIT LETTER O LOCATED 1070 FEET FROM THE South LINE AND 1840 FEET FROM THE East LINE OF SEC. 32 TWP. 27N RGE. 10W NMPM		12. County San Juan	
21. Elevations (Show whether DF, RT, etc.) 6130'GL		22. Approx. Date Work will start	
21A. Kind & Status Plug. Bond Statewide		21B. Drilling Contractor	
19. Proposed Depth 6385'		19A. Formation Dakota	
20. Rotary or C.T. Rotary			

23.

PROPOSED CASING AND CEMENT PROGRAM

SIZE OF HOLE	SIZE OF CASING	WEIGHT PER FOOT	SETTING DEPTH	SACKS OF CEMENT	EST. TOP
12 1/4"	8 5/8'	24#	200'	180 cu. ft.	surface
7 7/8"	4 1/2'	10.5#	6395'	995 cu. ft.	base of Ojo Alamo

Production Casing Cementing:

- 1st stage with 330 cu.ft. of cement to cover the Gallup formation.
- 2nd stage with 315 cu.ft. of cement to cover the Mesa Verde formations.
- 3rd stage with 350 cu.ft. of cement to cover the Pictured Cliffs formations.

Selectively perforate and sandwater fracture the Dakota formation.

The E/2 of Section 32 is dedicated to this well.

APPROVAL VALID
FOR 90 DAYS UNLESS
DRILLING COMMENCED,
EXPIRES 4-14-72



IN ABOVE SPACE DESCRIBE PROPOSED PROGRAM: IF PROPOSAL IS TO DEEPEN OR PLUG BACK, GIVE DATA ON PRESENT PRODUCTIVE ZONE AND PROPOSED NEW PRODUCTIVE ZONE. GIVE BLOWOUT PREVENTER PROGRAM, IF ANY.

I hereby certify that the information above is true and complete to the best of my knowledge and belief.

Signed John H. Wood Title Petroleum Engineer Date January 13, 1972

(This space for State Use)

APPROVED BY Carroll C. Cawley TITLE SUPERVISOR DIST. #3 DATE 1-14-72

CONDITIONS OF APPROVAL, IF ANY:

NEW MEXICO OIL CONSERVATION COMMISSION
WELL LOCATION AND ACREAGE DEDICATION PLAT

Superseded by C-128
Effective 1967

All distances must be from the corner boundaries of the section.

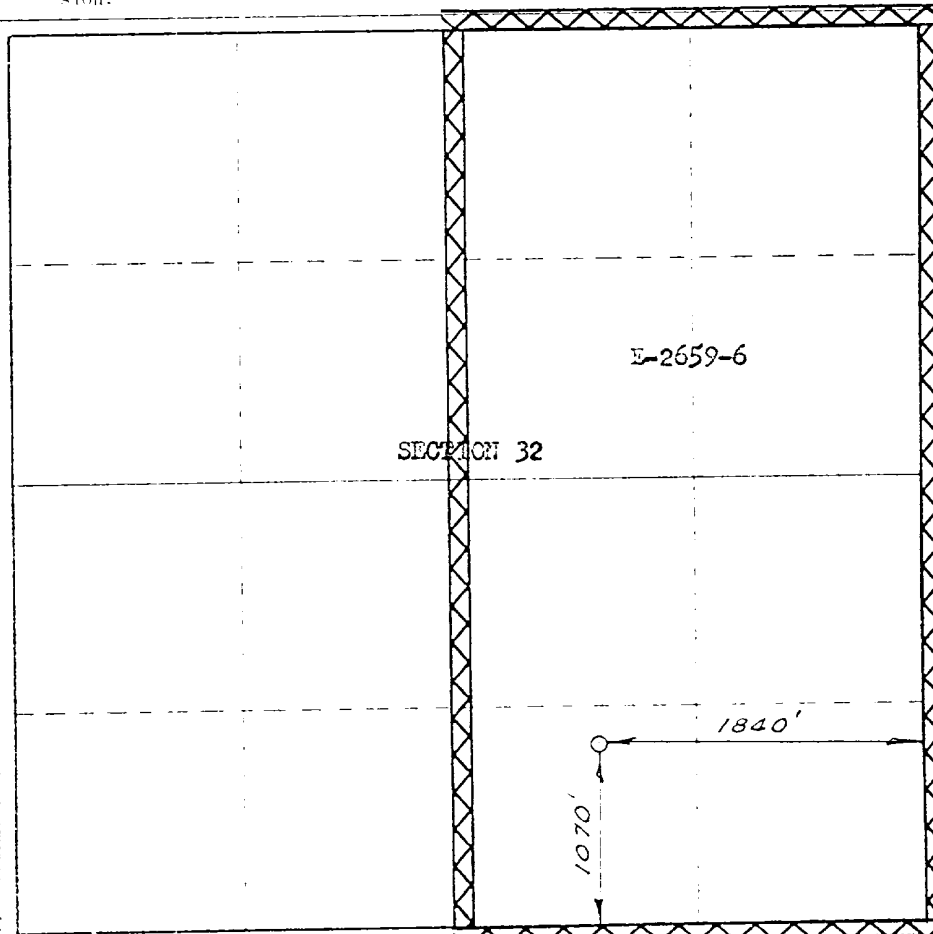
EL PASO NATURAL GAS COMPANY		HUERFANO UNIT		(E-2659-6)	227
0	32	27-N	10-W	SAN JUAN	
1070	SOUTH	1840	EAST		
6130	DAKOTA	BASIN DAKOTA	320.00		

- Outline the acreage dedicated to the subject well by colored pencil or hatchure marks on the plat below.
- If more than one lease is dedicated to the well, outline each and identify the ownership thereof (working interest and royalty).
- If more than one lease of different ownership is dedicated to the well, have the interests of all owners been consolidated by communitization, unitization, force-pooling, etc?

X Yes ☐ No If answer is "yes," type of consolidation Unitization

If answer is "no," list the owners and tract descriptions which have actually been consolidated (reverse side of this form if necessary.)

No allowance will be assigned to the well until all interests have been consolidated (by communitization, unitization, forced-pooling, or otherwise) or until a non-standard unit, eliminating such interests, has been approved by the Commission.



CERTIFICATION

I hereby certify that the information contained herein is true and complete to the best of my knowledge and belief.

H. H. Wood

Petroleum Engineer

El Paso Natural Gas Co.

January 13, 1972

I hereby certify that the well location shown on this plat was plotted from field notes of actual surveys made by me or under my supervision, and that the same is true and correct to the best of my knowledge and belief.

JANUARY 5, 1972

Paul C. Palmer
1760