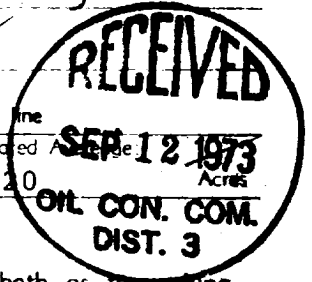


**NEW MEXICO OIL CONSERVATION COMMISSION
WELL LOCATION AND ACERAGE DEDICATION PLAT**

All distances must be from the outer boundaries of the Section

Operator WESTERN OIL & MINERALS CORP.			Lease MARRON		Well No. 5
Unit Letter H	Section 27	Township 27 NORTH	Range 8 WEST	County San Juan	
Actual Footage Location of Well: 2200 feet from the NORTH line and 790 feet from the EAST line					
Ground Level Elev. 6092.0	Producing Formation Mesa Verde		Pool Blanco Mesa Verde ✓	Dedicated Acreage 320	Acres



- Outline the acreage dedicated to the subject well by colored pencil or hatchure marks on the plat below.
- If more than one lease is dedicated to the well, outline each and identify the ownership thereof (both as to working interest and royalty), **Western Oil & Minerals Corp. own entire 320 acre lse dedicated to well.**
- If more than one lease of different ownership is dedicated to the well, have the interests of all owners been consolidated by communitization, unitization, force-pooling, etc?

() Yes () No If answer is "yes," type of consolidation

If answer is "no," list the owners and tract descriptions which have actually consolidated. (Use reverse side of this form if necessary)

No allowable will be assigned to the well until all interests have been consolidated (by communitization, unitization, forced-pooling, or otherwise) or until a non standard unit, eliminating such interests, has been approved by the Commission.

CERTIFICATION

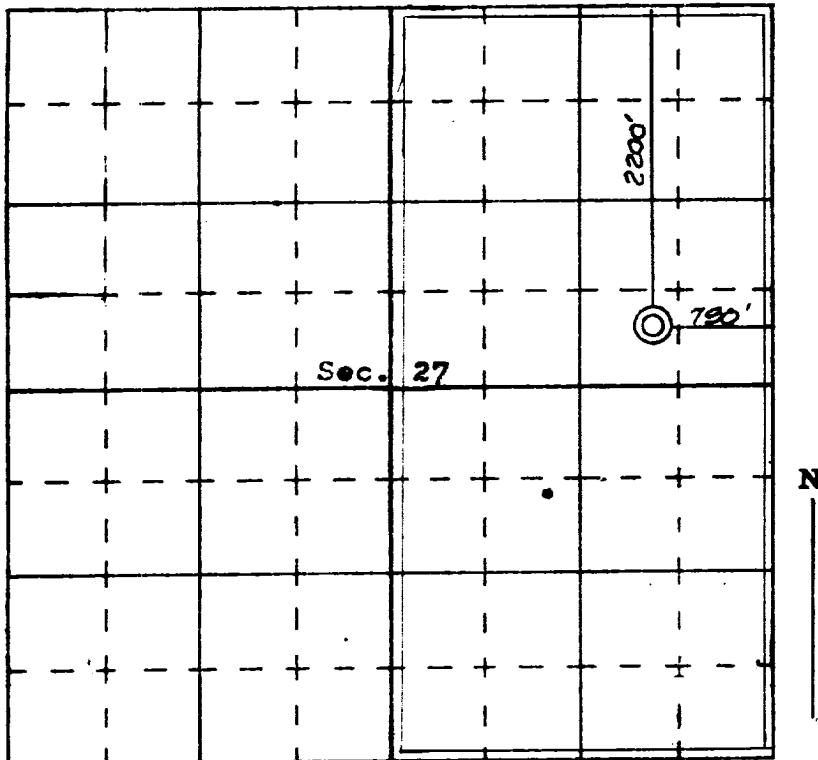
I hereby certify that the information contained herein is true and complete to the best of my knowledge and belief.

Elliott A. Riggs
Name
Agent
Position
Western Oil & Minerals Corp.
Company
September 7, 1973
Date

I hereby certify that the well location shown on this plat was plotted from field notes of actual surveys made by me or under my supervision, and that the same is true and correct to the best of my knowledge and belief.

6 September, 1973
Date Surveyed

Registered Professional Engineer
and/or Land Surveyor
JAMES P. LOEFER
1463
Certificate No.



SCALE—4 INCHES EQUALS 1 MILE

SAN JUAN ENGINEERING COMPANY, FARMINGTON, N. M.