

UNITED STATES  
DEPARTMENT OF THE INTERIOR  
GEOLOGICAL SURVEY

30-045-21611

## APPLICATION FOR PERMIT TO DRILL, DEEPEN, OR PLUG BACK

## 1a. TYPE OF WORK

DRILL ☒DEEPEN ☐PLUG BACK ☐

## b. TYPE OF WELL

OIL  
WELL ☒GAS  
WELL ☐

OTHER

Wildcat

SINGLE  
ZONE ☐MULTIPLE  
ZONE ☐

## 2. NAME OF OPERATOR

Northwest Pipeline Corporation

## 3. ADDRESS OF OPERATOR

Box 90 Farmington, N.M. 87401

## 4. LOCATION OF WELL (Report location clearly and in accordance with any State requirements.)

At surface

990 FSL 7 990' FEL

At proposed prod. zone

## 14. DISTANCE IN MILES AND DIRECTION FROM NEAREST TOWN OR POST OFFICE\*

20 miles southwest Shiprock, New Mexico

## 15. DISTANCE FROM PROPOSED\*

LOCATION TO NEAREST  
PROPERTY OR LEASE LINE, FT.  
(Also to nearest drilg. unit line, if any)18. DISTANCE FROM PROPOSED LOCATION\*  
TO NEAREST WELL, DRILLING, COMPLETED,  
OR APPLIED FOR, ON THIS LEASE, FT.

## 16. NO. OF ACRES IN LEASE

17. NO. OF ACRES ASSIGNED  
TO THIS WELL

40

## 19. PROPOSED DEPTH

6500

## 20. ROTARY OR CABLE TOOLS

Rotary

## 21. ELEVATIONS (Show whether DF, RT, GR, etc.)

5703 GR

## 22. APPROX. DATE WORK WILL START\*

12-15-74

## 23.

## PROPOSED CASING AND CEMENTING PROGRAM

SIZE OF HOLE	SIZE OF CASING	WEIGHT PER FOOT	SETTING DEPTH	QUANTITY OF CEMENT
17-1/2	13-3/8	48	130	125 sx
12-1/4	8-5/8	24	1350	220 sx
7-7/8	5-1/2	15.5	6500	200 sx

It is proposed to drill this well to 6500' with mud. All significant gas shows will be drill stem tested. It is anticipated that at least one (1) core will be cut. If the drill stem tests, core analysis and logs warrant, casing will be run and cemented. The zones of interest will be selectively perforated and stimulated.

The SE/4 SE/4 Section 20, T27N, R19W is dedicated to this well.

NOV 27 1974

IN ABOVE SPACE DESCRIBE PROPOSED PROGRAM: If proposal is to deepen or plug back, give data on present productive zone and proposed new productive zone. If proposal is to drill or deepen directionally, give pertinent data on subsurface locations and measured and true vertical depths. Clay blowout preventer program, if any.

## 24.

SIGNER

O.B. Whitenburg

TITLE Production &amp; Drilling Engineer

DATE 11-21-74

(This space for Federal or State office use)

PERMIT NO.

APPROVAL DATE

APPROVED BY

TITLE

DATE

CONDITIONS OF APPROVAL, IF ANY:

\*See Instructions On Reverse Side

**NEW MEXICO OIL CONSERVATION COMMISSION  
WELL LOCATION AND ACREAGE DEDICATION PLAT**

Form C-102  
Supersedes C-128  
Effective 1-1-65

All distances must be from the outer boundaries of the Section.

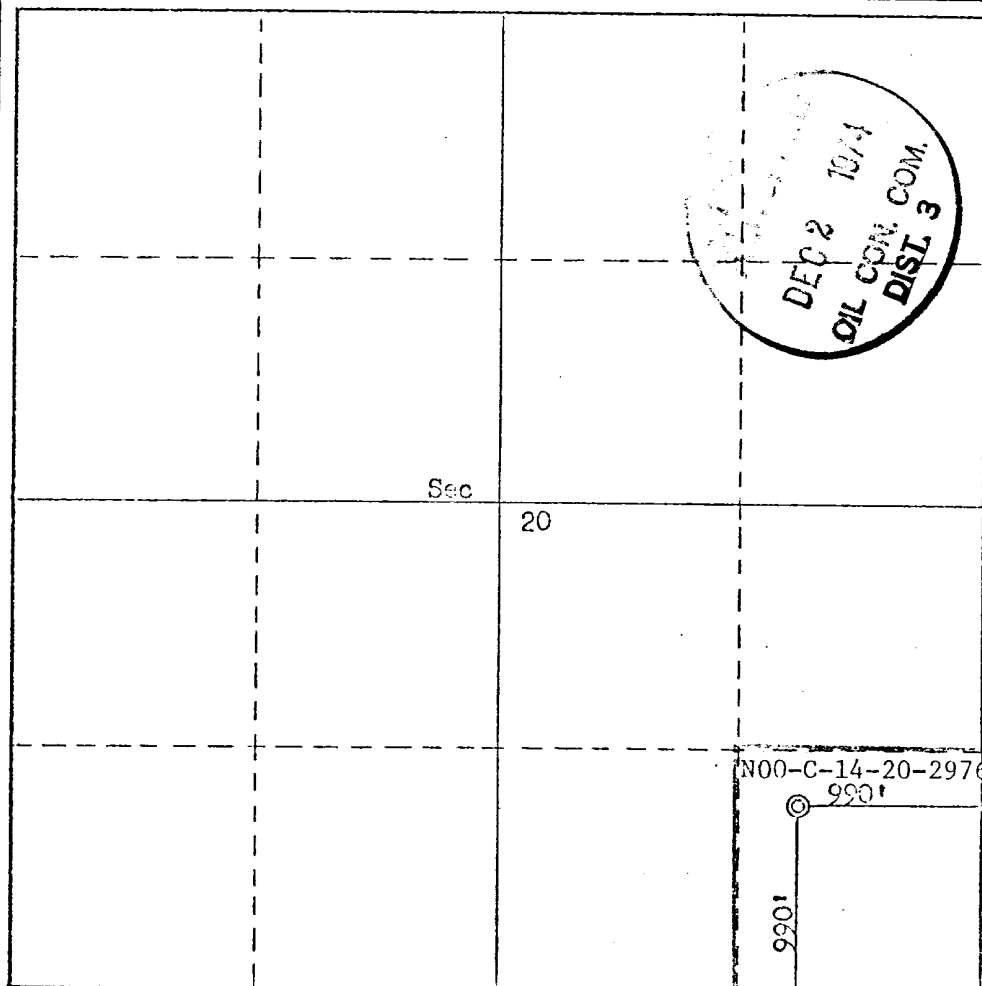
Operator <b>Northwest Pipeline Corporation</b>			Lease <b>Barbara Kay</b>		Well No. <b>1</b>
Unit Letter <b>P</b>	Section <b>20</b>	Township <b>27N</b>	Range <b>19W</b>	County <b>San Juan</b>	
Actual Footage Location of Well: <b>990</b> feet from the <b>South</b> line and <b>990</b> feet from the <b>East</b> line					
Ground Level Elev. <b>5703</b>	Producing Formation <b>Elbert</b>		Pool <b>Wildcat</b>	Dedicated Acreage: <b>40</b> Acres	

1. Outline the acreage dedicated to the subject well by colored pencil or hatchure marks on the plat below.
2. If more than one lease is dedicated to the well, outline each and identify the ownership thereof (both as to working interest and royalty).
3. If more than one lease of different ownership is dedicated to the well, have the interests of all owners been consolidated by communitization, unitization, force-pooling, etc?

☐ Yes ☒ No If answer is "yes," type of consolidation \_\_\_\_\_

If answer is "no," list the owners and tract descriptions which have actually been consolidated. (Use reverse side of this form if necessary.) SE/4 SE/4 Sec 20, T27N, R19W

No allowable will be assigned to the well until all interests have been consolidated (by communitization, unitization, forced-pooling, or otherwise) or until a non-standard unit, eliminating such interests, has been approved by the Commission.



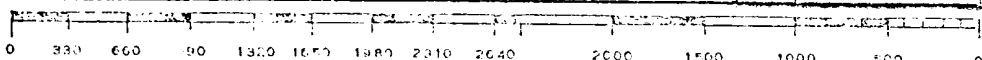
**CERTIFICATION**

I hereby certify that the information contained herein is true and complete to the best of my knowledge and belief.

Name O.B. Whitenburg  
**O.B. Whitenburg**  
 Position  
**Production & Drlg. Engineer**  
 Company  
**Northwest Pipeline Corp.**  
 Date  
**11-26-74**

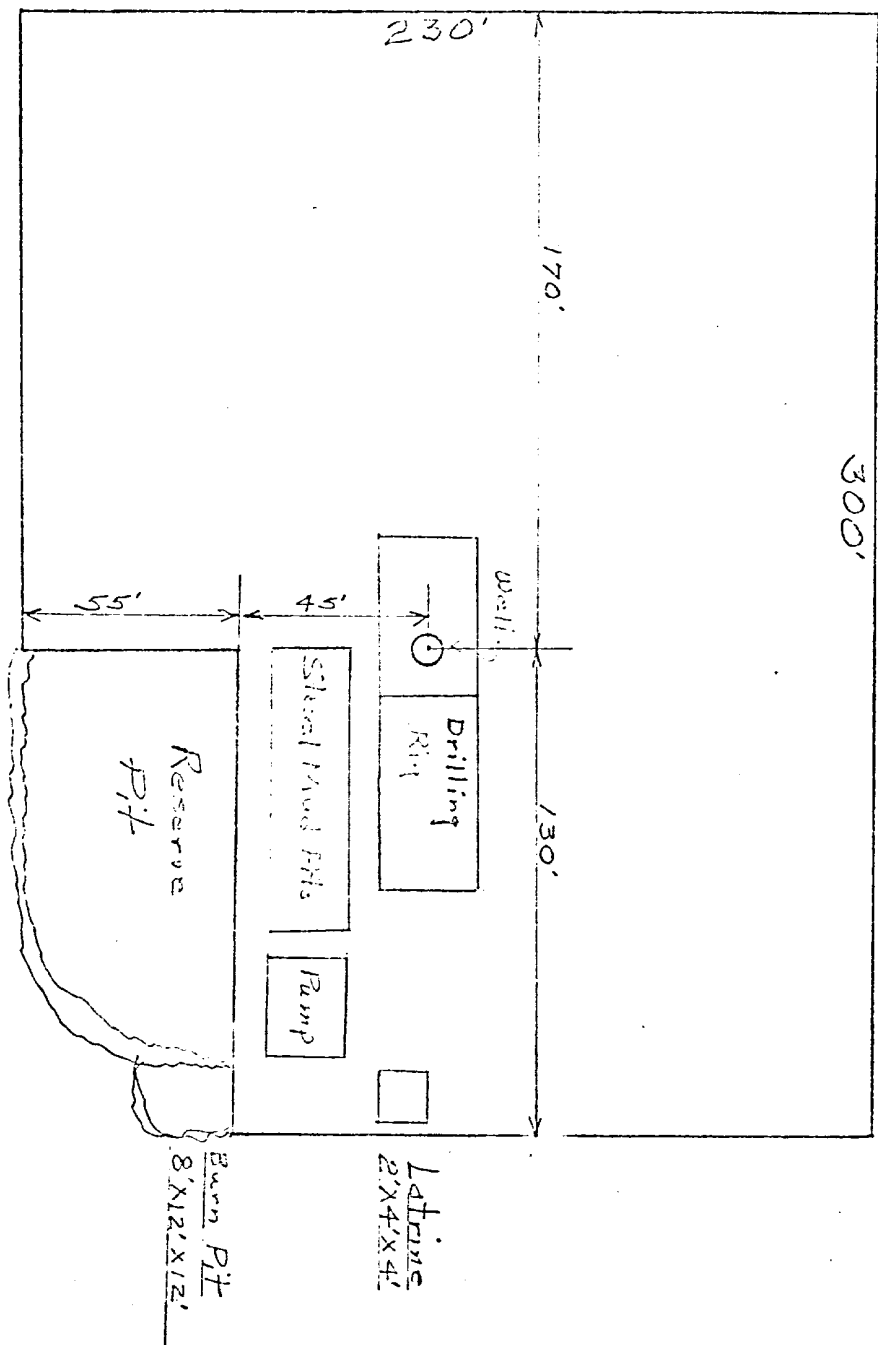
I hereby certify that the well location shown on this plat was plotted from field notes of actual surveys made by me or under my supervision, and that the same is true and correct to the best of my knowledge and belief.

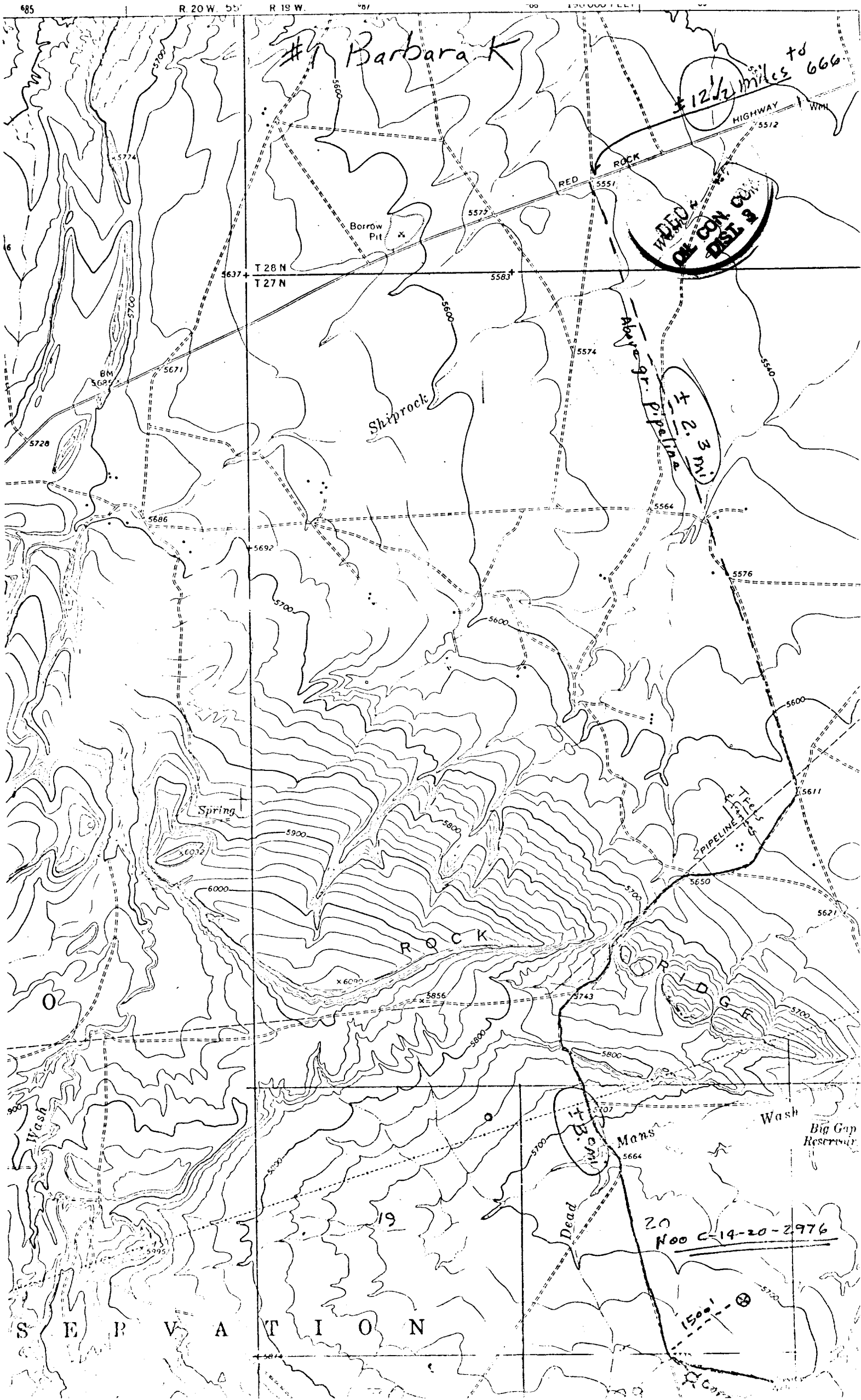
Date Surveyed  
**November 18, 1974**  
 Registered Professional Engineer and/or Land Surveyor  
**Fred E. Koir Jr.**  
 Certificate No.  
**3950**



# LOCATION AND EQUIPMENT LAYOUT

Barbara Kay #1





Northwest Pipeline Corporation



PRODUCTION & DRILLING  
P. O. BOX 90  
FARMINGTON, NEW MEXICO 87401

November 21, 1974



United States Geological Survey  
Box 959  
Farmington, N.M. 87401

Re: Application for Permit to Drill  
Barbara Kay #1  
SE/4 SE/4 Sec. 20, T27N, R19W

Gentlemen:

Information regarding existing roads, pipelines, flowlines, etc., relative to the above well location are included on the enclosed attachments.

Water for drilling and completion operations will be obtained from the Big Gap Reservoir. Permission has been obtained from the Navajo Tribe to use this water. Waste disposal will be burned in the burn pit, latrine or reserve pit. There will be no airstrip associated with drilling this well. Upon completion of this well the location will be cleaned, leveled and a dry hole marker placed if applicable.

Yours truly,  
Northwest Pipeline Corporation

  
O.B. Whitenburg

Production & Drilling Engineer

OBW/js

Enc:

NOV 27 1974

U. S. GEOLOGICAL SURVEY