

UNITED STATES
DEPARTMENT OF THE INTERIOR
GEOLOGICAL SURVEY

API 30-095 - 21944

5. LEASE DESIGNATION AND SERIAL NO.

I 89 - IND - 57

6. IF INDIAN, ALLOTTEE OR TRIBE NAME

Navajo Tribe

7. UNIT AGREEMENT NAME

8. FARM OR LEASE NAME

Staver- ~~Wxxxxx~~ Table Mesa

9. WELL NO.

7

10. FIELD AND POOL, OR WILDCAT

Table Mesa Dakota

11. SEC., T., R., M., OR BLK.
AND SURVEY OR AREA

Sec. 3 T27 NR17W

12. COUNTY OR PARISH

San Juan

13. STATE

New Mex

APPLICATION FOR PERMIT TO DRILL, DEEPEN, OR PLUG BACK

1a. TYPE OF WORK

DRILL ☒DEEPEN ☐PLUG BACK ☐

b. TYPE OF WELL

OIL
WELL ☒GAS
WELL ☐

OTHER

SINGLE
ZONE ☒MULTIPLE
ZONE ☐

2. NAME OF OPERATOR

John F. Staver dba Saguaro Oil Company

3. ADDRESS OF OPERATOR

P.O. Box 51 Farmington, New Mexico 87401

4. LOCATION OF WELL (Report location clearly and in accordance with any State requirements.*)
At surface

NWSE 2142 FSL, 2539 FEL

At proposed prod. zone
Same

14. DISTANCE IN MILES AND DIRECTION FROM NEAREST TOWN OR POST OFFICE*

Fifteen (15) Miles south of Shiprock New Mexico

15. DISTANCE FROM PROPOSED*

LOCATION TO NEAREST
PROPERTY OR LEASE LINE, FT.
(Also to nearest drig. unit line, if any)

2539'

16. NO. OF ACRES IN LEASE

3200 ac

17. NO. OF ACRES ASSIGNED
TO THIS WELL

2 1/2

40 joint

18. DISTANCE FROM PROPOSED LOCATION*
TO NEAREST WELL, DRILLING, COMPLETED,
OR APPLIED FOR, ON THIS LEASE, FT.

750'

19. PROPOSED DEPTH

1400'

20. ROTARY OR CABLE TOOLS

Rotary

21. ELEVATIONS (Show whether DF, RT, GR, etc.)

5324 Grd

22. APPROX. DATE WORK WILL START*

March 13, 1976

23. PROPOSED CASING AND CEMENTING PROGRAM

SIZE OF HOLE	SIZE OF CASING	WEIGHT PER FOOT	SETTING DEPTH	QUANTITY OF CEMENT
11"	8 5/8"	24.00	20'	5 sx
7 7/8"	5 1/2"	12.00	610'	35 sx

If commercial production is obtained 4" liner will be set and cemented
at total depth.

Propose to drill and test the upper bench of the Dakota sandstone .

If commercial production is obtained, necessary production equipment will
be installed and the well completed

Adequate Blowout Prevention Equipment will be furnished by the Contractor.

The field is a low pressure deleted area.

RECEIVED

MAR 18 1976

U. S. GEOLOGICAL SURVEY
WASHINGTON, D. C.

MAR 11 1976

IN ABOVE SPACE DESCRIBE PROPOSED PROGRAM: If proposal is to deepen or plug back give data on present productive zone and proposed new productive zone. If proposal is to drill or deepen directionally, give pertinent data on subsurface locations and measured and true vertical depths. Give blowout preventer program, if any.

24.

SIGNED

TITLE

President

DATE

February 25, 1976

(This space for Federal or State office use)

PERMIT NO.

APPROVAL DATE

APPROVED BY

TITLE

DATE

CONDITIONS OF APPROVAL, IF ANY:

NEW MEXICO OIL CONSERVATION COMMISSION
WELL LOCATION AND ACREAGE DEDICATION PLAT

Form C-102
Supersedes C-128
Effective 1-1-65

All distances must be from the outer boundaries of the Section.

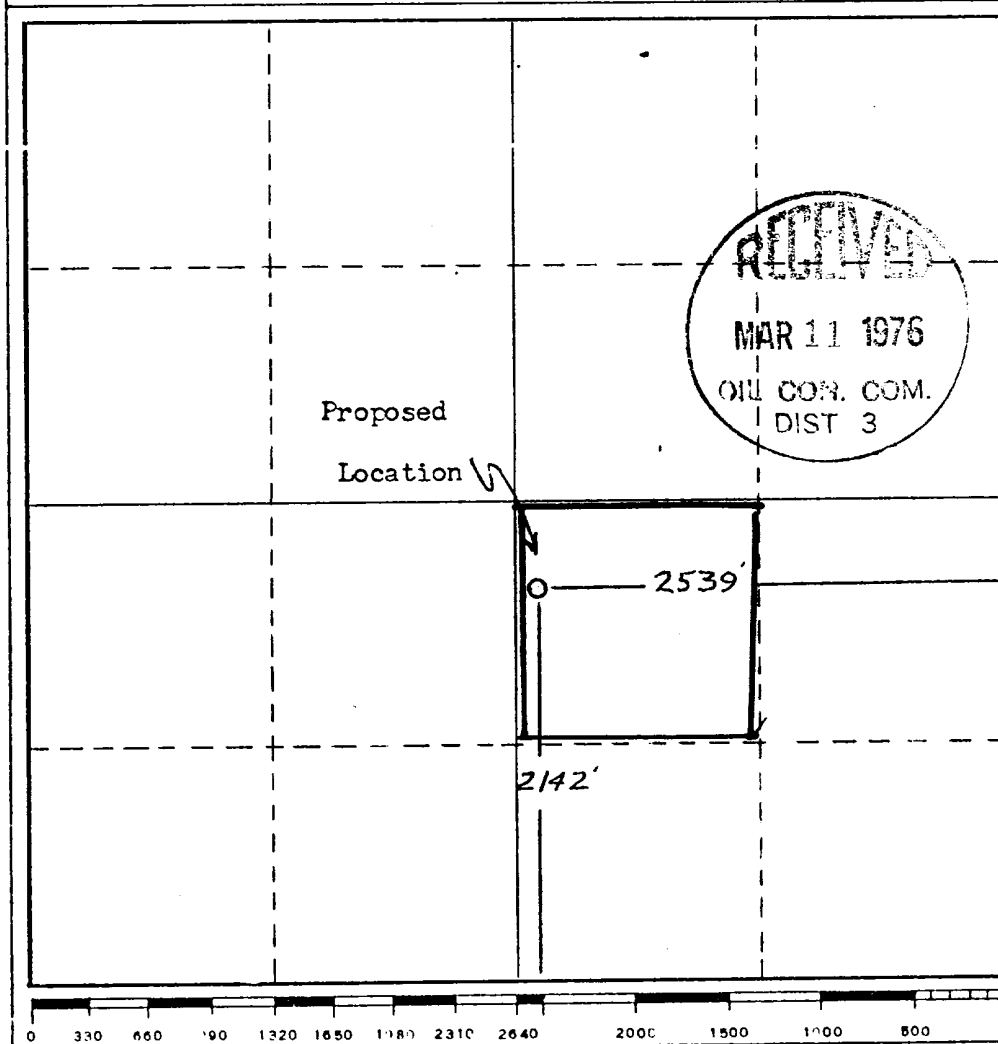
Operator Saguaro Oil Co. John F. Staver		Lease Staver-Table Mesa		Well No. 7
Unit Letter J	Section 3	Township 27 N	Range 17 W	County San Juan
Actual Footage Location of Well: 2142 feet from the South line and 2539 feet from the East line				
Ground Level Elev. 5324	Producing Formation Dakota Sandstone	Pool Table Mesa Dakota	Dedicated Acreage 2 1/2 40 Acres JOINT	

- Outline the acreage dedicated to the subject well by colored pencil or hachure marks on the plat below.
* See NMOCC Special Rules: Case No. No. 5605: Order No. R.5147
- If more than one lease is dedicated to the well, outline each and identify the ownership thereof (both as to working interest and royalty).
- If more than one lease of different ownership is dedicated to the well, have the interests of all owners been consolidated by communitization, unitization, force-pooling, etc?

☐ Yes ☐ No If answer is "yes," type of consolidation _____

If answer is "no," list the owners and tract descriptions which have actually been consolidated. (Use reverse side of this form if necessary.) _____

No allowable will be assigned to the well until all interests have been consolidated (by communitization, unitization, forced-pooling, or otherwise) or until a non-standard unit, eliminating such interests, has been approved by the Commission.



CERTIFICATION

I hereby certify that the information contained herein is true and complete to the best of my knowledge and belief.

John Cunningham
Name
John Cunningham

Position
President

Company
Saguaro Oil Company

Date
February 26, 1976

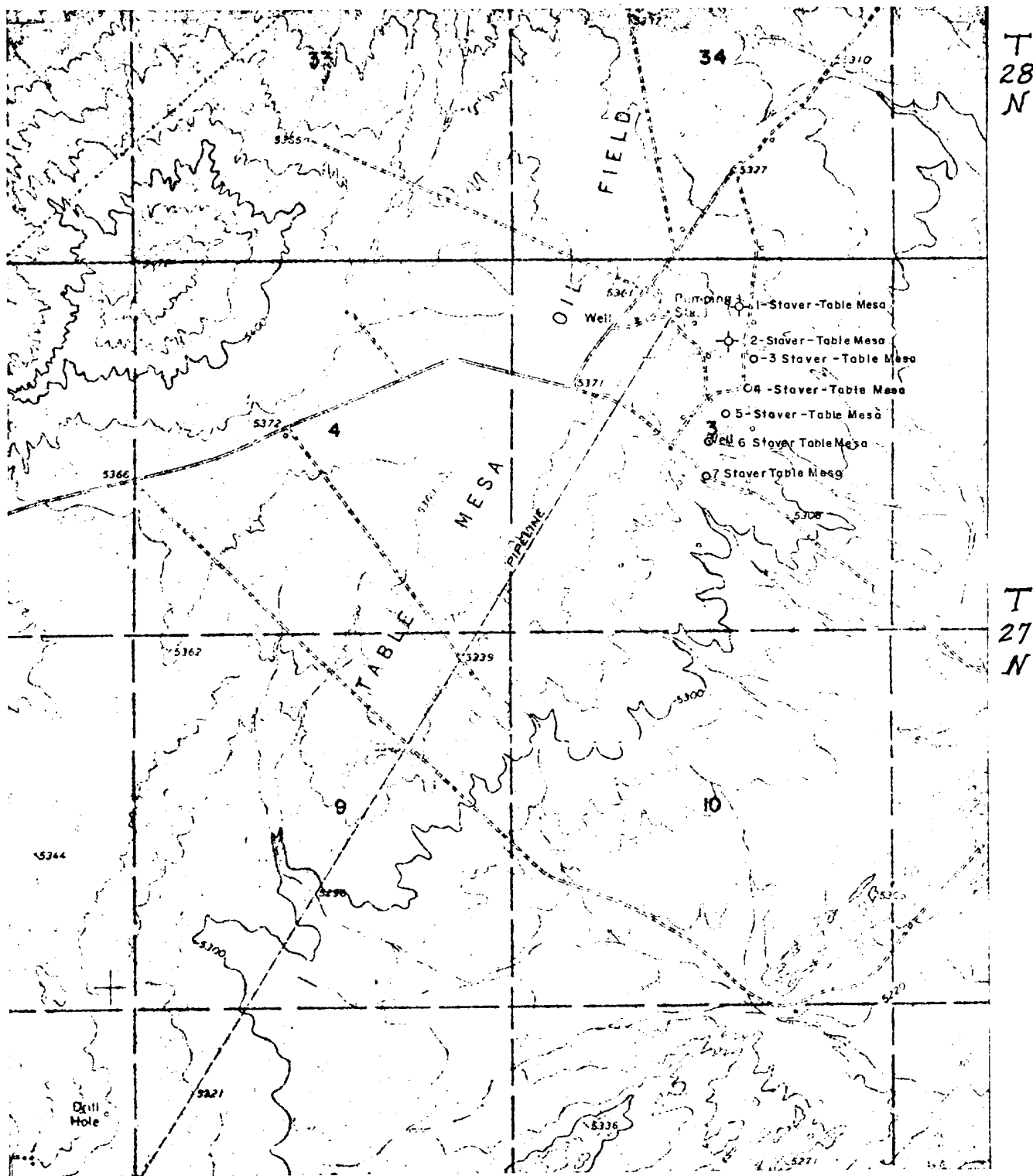
I hereby certify that the well location shown on this plat was plotted from field notes of actual surveys made by me or under my supervision, and that the same is true and correct to the best of my knowledge and belief.

Date Surveyed
February 19, 1976

Registered Professional Engineer and/or Land Surveyor

Frederick H. Reed

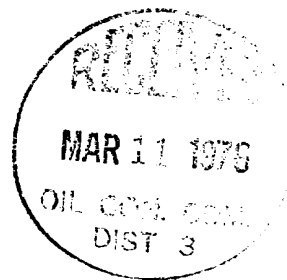
Certificate No.
3795

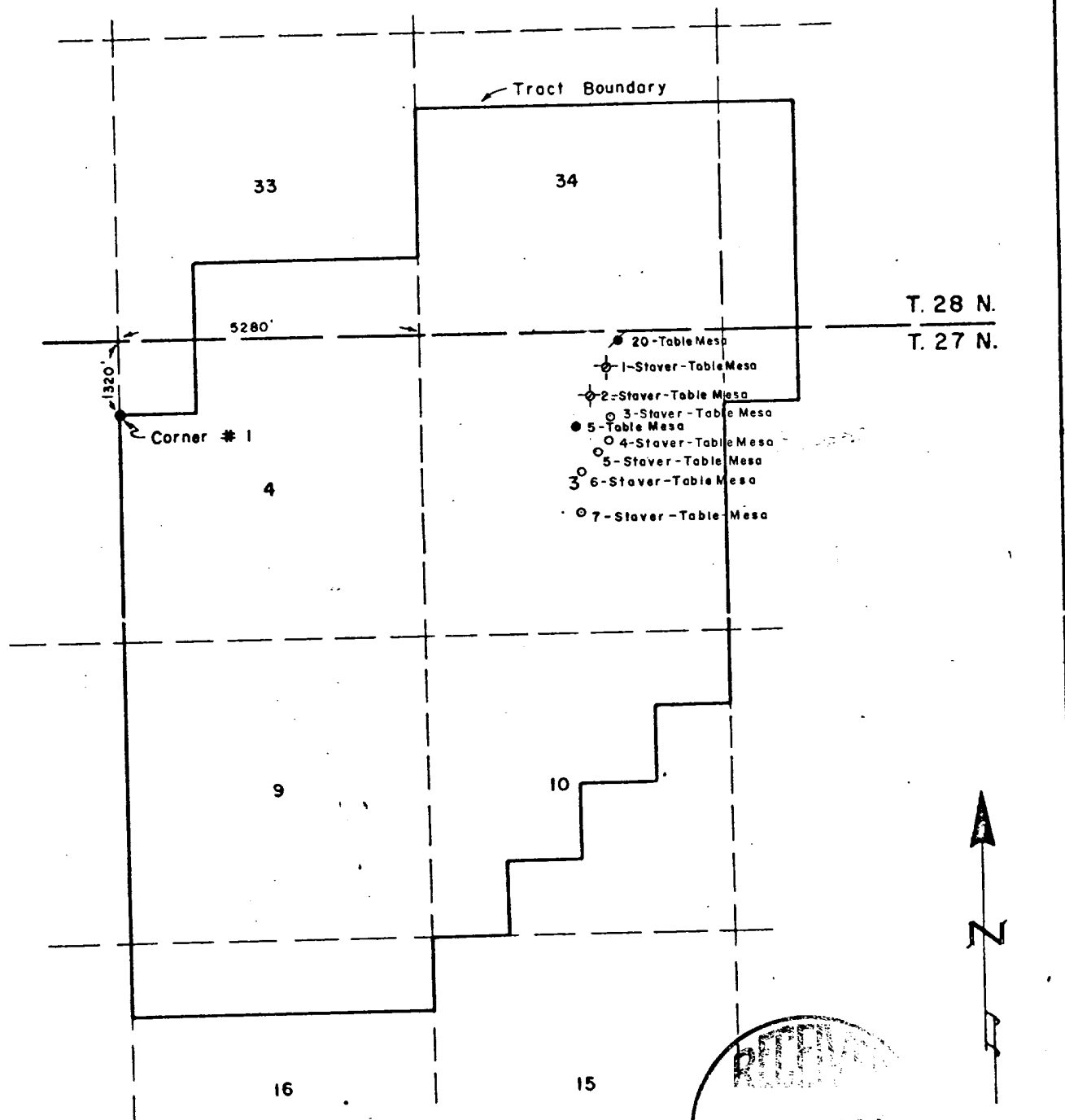


R 17 W

LOCATION PLAT

John F. Staver dba Saguaro Oil Company
 No's 3-4-5-6-7 Staver-Table Mesa
 NE/4&SE/4Sec. 3 T27N, R17W NMPM
 San Juan County, New Mexico





NOTE:

Section line projection based upon lease description
and tract survey of November, 1950

TWELVE (12) POINT DEVELOPMENT PLAN

John F. Staver dba Saguaro Oil Company
No.'s 3 - 4 - 5 - 6 - 7 Staver Table Mesa
NE/4 and SE/4 of Sec 3 T27N R17W NMPM
San Juan County, New Mexico

Enclosed are plats showing the location of the existing roads, wells and lateral roads to the various locations.

Basically, the existing lease roads will be utilized except for short laterals (50 to 300 feet) to the well pads.

If commerical production is obtained, the pumping unit etc. will be installed within the existing cleared pad area. Flow lines will be laid to the main tank battery approximately from a 1300 feet to 2400 feet to the west and northwest.

Water for drilling operations will be obtained on the lease from presently produced formation water.

Waste disposal will be buried in the burn pit, latrine or the reserve pit as needed.

No camp or airstrip will be associated with the drilling or completion of this well.


Small self-contained trailers might be used by supervisory personnel during the drilling and completion phases.

A plat is included to show the proposed location of the rig, mud tank reserve pit, burn pit latrine etc.

the area is covered with very sparse clumps of native grass in the shaly soil of the upper Mancos formation.

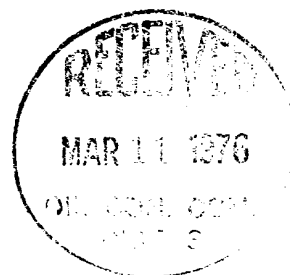
Upon completion of the well, the locations will be cleaned and leveled and restored to the original as much as conditions and operations permit.

Very truly yours,


John Cunningham

Saguaro Oil Company
Its President

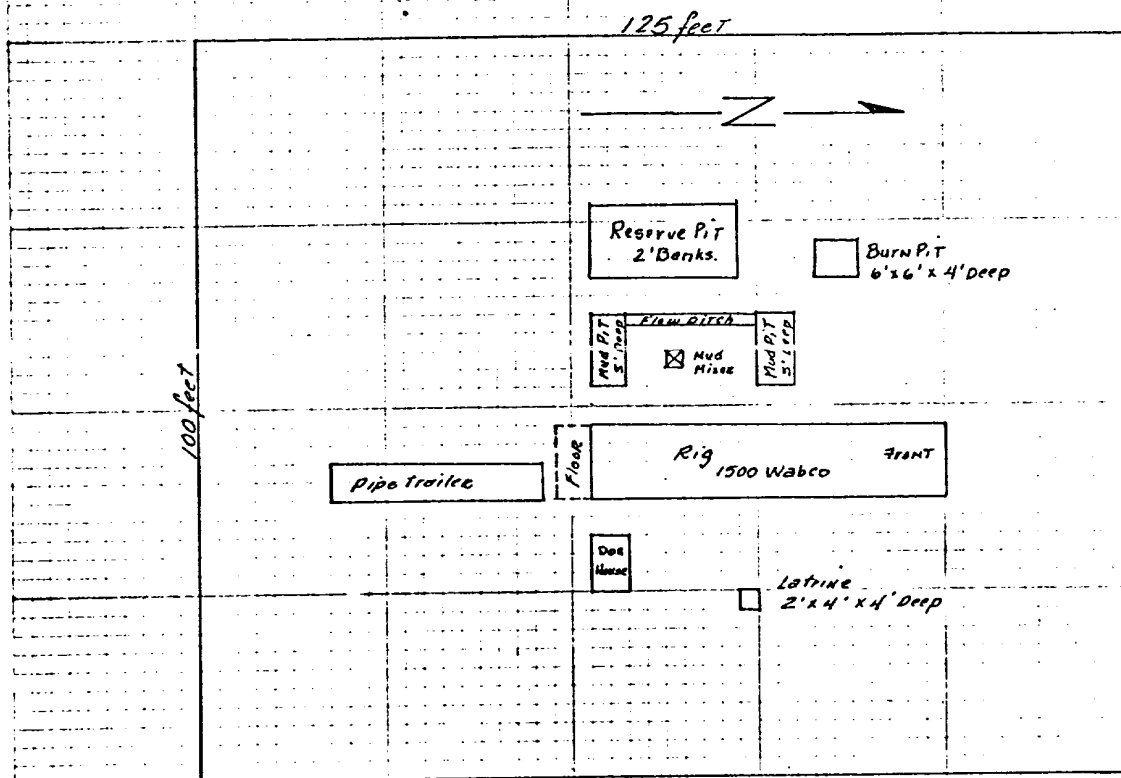
Farmington New Mexico
February 25, 1976



John F. Staver dba Saguaro Oil Company

TABLE MESA FIELD

Location AND Equipment Lay-out



No camp or Airstrip associated with this lease

