

UNITED STATES
DEPARTMENT OF THE INTERIOR

GEOLOGICAL SURVEY *API 30-045-22079*

APPLICATION FOR PERMIT TO DRILL, DEEPEN, OR PLUG BACK

1a. TYPE OF WORK
 DRILL DEEPEN PLUG BACK

b. TYPE OF WELL
 OIL WELL GAS WELL OTHER
 SINGLE ZONE MULTIPLE ZONE

2. NAME OF OPERATOR
 El Paso Natural Gas Company

3. ADDRESS OF OPERATOR
 PO Box 990, Farmington, NM 87401

4. LOCATION OF WELL (Report location clearly and in accordance with any State requirements.)*
 At surface 1050'S, 800'E
 At proposed prod. zone

14. DISTANCE IN MILES AND DIRECTION FROM NEAREST TOWN OR POST OFFICE*

15. DISTANCE FROM PROPOSED* LOCATION TO NEAREST PROPERTY OR LEASE LINE, FT. (Also to nearest drilg. unit line, if any)

18. DISTANCE FROM PROPOSED LOCATION* TO NEAREST WELL, DRILLING COMPLETED, OR APPLIED FOR, ON THIS LEASE, FT.

21. ELEVATIONS (Show whether DF, RT, GR, etc.)
 6326'GL

23. PROPOSED CASING AND CEMENTING PROGRAM

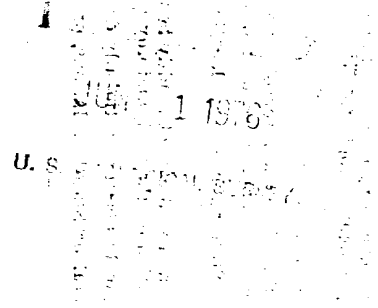
SIZE OF HOLE	SIZE OF CASING	WEIGHT PER FOOT	SETTING DEPTH	QUANTITY OF CEMENT
13 3/4"	9 5/8"	32.3#	200'	224 cu.ft. to circulate
8 3/4"	7"	20.0#	3150'	355 cu.ft. to cover OjoAlamo
6 1/4"	4 1/2"	10.5#	3000-5435'	424 cu.ft. to fill to 3000'

Selectively perforate and sandwater fracture the Mesa Verde formation.

A 3000 psi WP and 6000 psi test double gate preventer equipped with blind and pipe rams will be used for blow out prevention on this well.

This gas is dedicated.

The S/2 of Section 9 is dedicated to this well.



IN ABOVE SPACE DESCRIBE PROPOSED PROGRAM: If proposal is to deepen or plug back, give data on present productive zone and proposed new productive zone. If proposal is to drill or deepen directionally, give pertinent data on subsurface locations and measured and true vertical depths. Give blowout preventer program, if any.

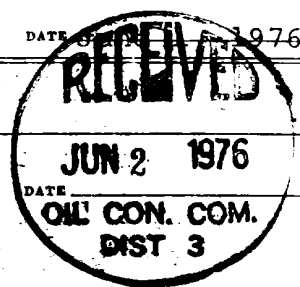
24. SIGNED *A. G. Lucas* TITLE Drilling Clerk DATE JUN 1 1976

(This space for Federal or State office use)

PERMIT NO. _____ APPROVAL DATE _____

APPROVED BY _____ TITLE _____ DATE _____

CONDITIONS OF APPROVAL, IF ANY:
OK



*See Instructions On Reverse Side

NWU-460

NEW MEXICO OIL CONSERVATION COMMISSION
WELL LOCATION AND ACREAGE DEDICATION PLAT

Form C-102
Supersedes C-128
Effective 1-1-65

All distances must be from the outer boundaries of the Section.

Operator EL PASO NATURAL GAS COMPANY		Lease HARDIE E (SF-078499-A)		Well No. 2A
Unit Letter P	Section 9	Township 28-N	Range 8-W	County SAN JUAN
Actual Footage Location of Well: 1050 feet from the SOUTH line and 800 feet from the EAST line				
Ground Level Elev. 6326	Producing Formation MESA VERDE	Pool BLANCO MESA VERDE	Dedicated Acreage: 297.80 Acres	

1. Outline the acreage dedicated to the subject well by colored pencil or hachure marks on the plat below.
2. If more than one lease is dedicated to the well, outline each and identify the ownership thereof (both as to working interest and royalty).
3. If more than one lease of different ownership is dedicated to the well, have the interests of all owners been consolidated by communitization, unitization, force-pooling, etc?

Yes No If answer is "yes," type of consolidation _____

If answer is "no," list the owners and tract descriptions which have actually been consolidated. (Use reverse side of this form if necessary.) _____

No allowable will be assigned to the well until all interests have been consolidated (by communitization, unitization, forced-pooling, or otherwise) or until a non-standard unit, eliminating such interests, has been approved by the Commission.

CERTIFICATION

I hereby certify that the information contained herein is true and complete to the best of my knowledge and belief.

Original Signed by
D. G. Brisco

Name Drilling Clerk
Position El Paso Natural Gas Co.
Company June 1, 1976
Date



I hereby certify that the well location shown on this plat was plotted from field notes of actual surveys made by me or under my supervision, and that the same is true and correct to the best of my knowledge and belief.

Date Surveyed MAY 5, 1976
Registered Professional Engineer and/or Land Surveyor
<i>[Signature]</i>
Certificate No. 1760

