

UNITED STATES  
DEPARTMENT OF THE INTERIOR

## GEOLOGICAL SURVEY

## APPLICATION FOR PERMIT TO DRILL, DEEPEN, OR PLUG BACK

## 1a. TYPE OF WORK

DRILL ☒DEEPEN ☐PLUG BACK ☐

## b. TYPE OF WELL

OIL  
WELL ☐GAS  
WELL ☒

OTHER

SINGLE  
ZONE ☐MULTIPLE  
ZONE ☐

## 2. NAME OF OPERATOR

Great Lakes Chemical Corporation

3. ADDRESS OF OPERATOR Minerals Management Inc., Suite 105,  
501 Airport Drive, Farmington, New Mexico 87401

## 4. LOCATION OF WELL (Report location clearly and in accordance with any State requirements.\*)

At surface

1840' FNL, 1750' FWL, SEC. 35, T27N, R8W

At proposed prod. zone

## 14. DISTANCE IN MILES AND DIRECTION FROM NEAREST TOWN OR POST OFFICE\*

Southeast of Blanco, New Mexico

## 15. DISTANCE FROM PROPOSED\*

LOCATION TO NEAREST  
PROPERTY OR LEASE LINE, FT.  
(Also to nearest drlg. unit line, if any)

800

## 16. NO. OF ACRES IN LEASE

160

17. NO. OF ACRES ASSIGNED  
TO THIS WELL

160

## 18. DISTANCE FROM PROPOSED LOCATION\*

TO NEAREST WELL, DRILLING, COMPLETED,  
OR APPLIED FOR, ON THIS LEASE, FT.

---

## 19. PROPOSED DEPTH

4700

## 20. ROTARY OR CABLE TOOLS

Rotary

## 21. ELEVATIONS (Show whether DF, RT, GR, etc.)

6110' GR

## 22. APPROX. DATE WORK WILL START\*

September 1, 1977

## 23.

## PROPOSED CASING AND CEMENTING PROGRAM

SIZE OF HOLE	SIZE OF CASING	WEIGHT PER FOOT	SETTING DEPTH	QUANTITY OF CEMENT
12 1/4	8 5/8 (new)	24# K-55	200'	200 sx
7 7/8	4 1/2 (new)	10.5# K-55	4700'	per caliper log to surface

Great Lakes Chemical Corporation plans to drill this mesaverde development well. The surface formation is Wasach, with the Ojo Alamo water sand anticipated at 1225', Pictured Cliffs at 2200', Chacra at 3087', Cliff House at 3770', and Point Lookout at 4420'. The acreage dedication of this well is in compliance with New Mexico Oil Conservation Commission Order R-5395. A series 900 (3000 psi W.P.) Blowout Preventer will be used. The blowout preventer will be tested before drilling surface plug, with water base mud. Drill stem tests will be taken where necessary for evaluation. No abnormal pressures or temperatures are anticipated. Drilling should require approximately 10 days. The gas is dedicated.

IN ABOVE SPACE DESCRIBE PROPOSED PROGRAM: If proposal is to deepen or plug back, give data on present productive zone and proposed new productive zone. If proposal is to drill or deepen directionally, give pertinent data on subsurface locations and measured and true vertical depths. Give blowout preventer program, if any.

## 24.

SIGNED

TITLE

Area Manager

Minerals Management Inc.

DATE 8-1-77

(This space for Federal or State office use)

PERMIT NO.

APPROVAL DATE

APPROVED BY

TITLE

DATE

CONDITIONS OF APPROVAL, IF ANY:

\*See Instructions On Reverse Side

**NEW MEXICO OIL CONSERVATION COMMISSION  
WELL LOCATION AND ACREAGE DEDICATION PLAT**

Form C-102  
Supersedes C-128  
Effective 1-1-65

All distances must be from the outer boundaries of the Section.

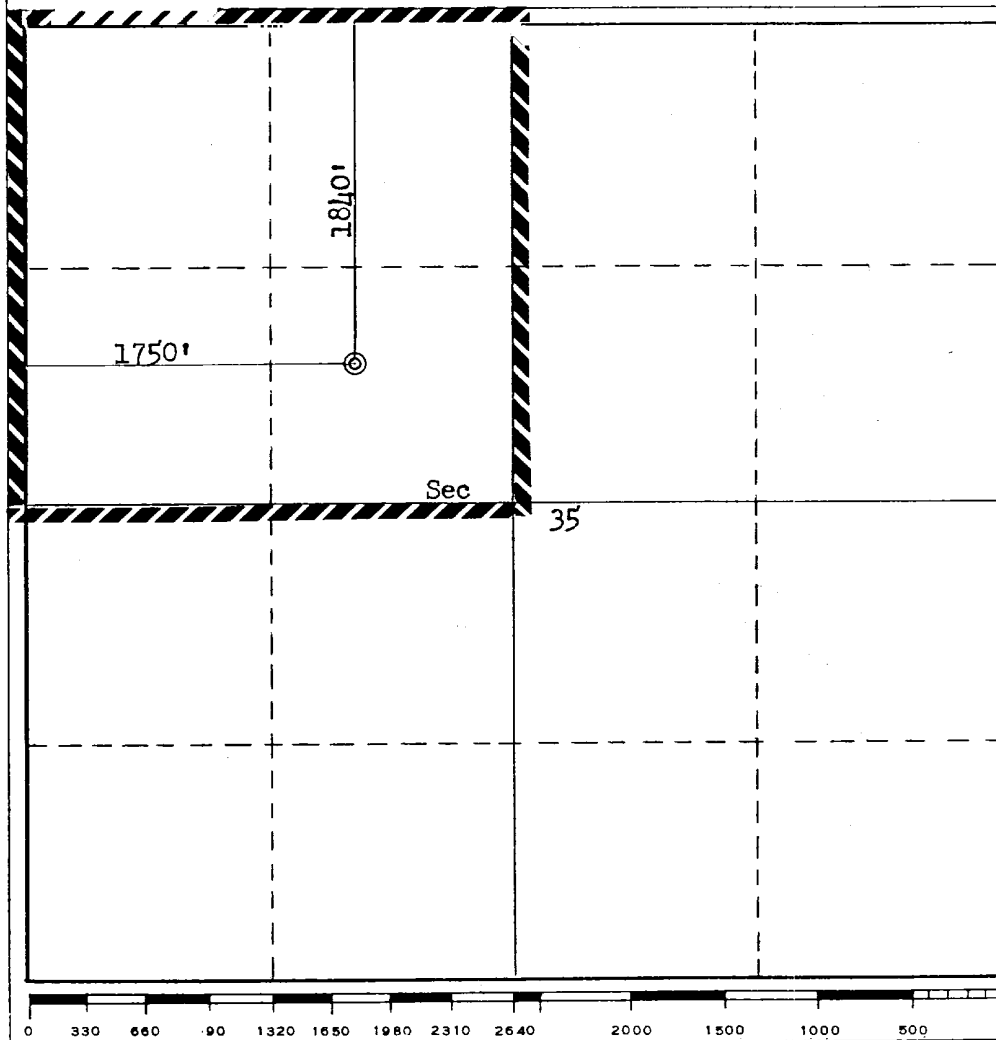
Operator <b>Great Lakes Chemical Corporation</b>			Lease <b>Hammond</b>		Well No. <b>5</b>
Unit Letter <b>F</b>	Section <b>35</b>	Township <b>27N</b>	Range <b>8W</b>	County <b>San Juan</b>	
Actual Footage Location of Well: <b>1840</b> feet from the <b>North</b> line and <b>1750</b> feet from the <b>West</b> line					
Ground Level Elev. <b>6110</b>	Producing Formation <b>Mesaverde</b>		Pool <b>Blanco Mesaverde</b>		Dedicated Acreage: <b>160</b> Acres

1. Outline the acreage dedicated to the subject well by colored pencil or hachure marks on the plat below.
2. If more than one lease is dedicated to the well, outline each and identify the ownership thereof (both as to working interest and royalty).
3. If more than one lease of different ownership is dedicated to the well, have the interests of all owners been consolidated by communitization, unitization, force-pooling, etc?

☐ Yes    ☐ No    If answer is "yes," type of consolidation \_\_\_\_\_

If answer is "no," list the owners and tract descriptions which have actually been consolidated. (Use reverse side of this form if necessary.) \_\_\_\_\_

No allowable will be assigned to the well until all interests have been consolidated (by communitization, unitization, forced-pooling, or otherwise) or until a non-standard unit, eliminating such interests, has been approved by the Commission.



**CERTIFICATION**

I hereby certify that the information contained herein is true and complete to the best of my knowledge and belief.

Name \_\_\_\_\_  
Area Manager  
Position  
Minerals Management Inc.  
Company  
August 1, 1977  
Date

I hereby certify that the well location shown on this plat was plotted from field notes of actual surveys made by me or under my supervision, and that the same is true and correct to the best of my knowledge and belief.

Date Surveyed  
**July 30, 1977**  
Registered Professional Engineer and/or Land Surveyor  
*Fred B. Kerr Jr.*  
**Fred B. Kerr Jr.**  
Certificate No.  
**3950**