

UNITED STATES
DEPARTMENT OF THE INTERIOR

GEOLOGICAL SURVEY

APPLICATION FOR PERMIT TO DRILL, DEEPEN, OR PLUG BACK

1a. TYPE OF WORK

DRILL ☒DEEPEN ☐PLUG BACK ☐

b. TYPE OF WELL

OIL WELL ☐GAS WELL ☒OTHER ☐SINGLE ZONE ☒MULTIPLE ZONE ☐

2. NAME OF OPERATOR

GETTY OIL COMPANY

3. ADDRESS OF OPERATOR

P. O. Box 3360, Casper, Wyoming 82602

4. LOCATION OF WELL (Report location clearly and in accordance with any State requirements.)*

At surface

1870' FSL 1135' FEL

At proposed prod. zone

Same

14. DISTANCE IN MILES AND DIRECTION FROM NEAREST TOWN OR POST OFFICE*

13 miles southsoutheast of Blanco, New Mexico

15. DISTANCE FROM PROPOSED*

LOCATION TO NEAREST

PROPERTY OR LEASE LINE, FT.

(Also to nearest drlg. unit line, if any)

18. DISTANCE FROM PROPOSED LOCATION*

TO NEAREST WELL, DRILLING, COMPLETED, OR APPLIED FOR, ON THIS LEASE, FT.

16. NO. OF ACRES IN LEASE

640

19. PROPOSED DEPTH

4500

17. NO. OF ACRES ASSIGNED

TO THIS WELL

320

20. ROTARY OR CABLE TOOLS

Rotary

21. ELEVATIONS (Show whether DF, RT, GR, etc.)

G1 5981 KB 5994

22. APPROX. DATE WORK WILL START*

November 12, 1977

23.

PROPOSED CASING AND CEMENTING PROGRAM

SIZE OF HOLE	SIZE OF CASING	WEIGHT PER FOOT	SETTING DEPTH	QUANTITY OF CEMENT
12 1/4"	9 5/8" O.D.	32.3# H-40	300	112 sx - cement to surface
8 3/4"	7" O.D.	17.0# H-40	2400	340 sx - cement to surface
6 1/4"	4" O.D.	11.3# J-55	4500	275 sx - cement all of liner

Bottom liner All csg. to be new.

We propose to drill to 2400' with mud then cement 7" O.D. casing to surface. Lease gas will be used to drill from 2400' to 4500' T.D. Mesaverde is expected at 3565' and Point Lookout at 4225', K. B. depths.

Blowout preventer program details are a part of the attached Ten Point Well Control Plan.

Gas production is committed to El Paso Natural Gas Company.

RECEIVED

AUG 1 1977

IN ABOVE SPACE DESCRIBE PROPOSED PROGRAM: If proposal is to deepen or plug back, give data on present productive zone. If proposal is to drill or deepen directionally, give pertinent data on subsurface locations and measured and true vertical depths. Give blowout preventer program, if any.

24.

SIGNED

Charles Mowry

TITLE

Area Engineer

DATE

July 29, 1977

(This space for Federal or State office use)

PERMIT NO.

APPROVAL DATE

APPROVED BY

TITLE

DATE

CONDITIONS OF APPROVAL, IF ANY:

OK'd

*See Instructions On Reverse Side

NEW MEXICO OIL CONSERVATION COMMISSION
WELL LOCATION AND ACREAGE DEDICATION PLAT

Form C-102
Supersedes C-128
Effective 1-1-65

All distances must be from the outer boundaries of the Section.

Operator Getty Oil Company			Lease Nellie Platero		Well No. 5A
Unit Letter I	Section 11	Township 27N	Range 9W	County San Juan	
Actual Footage Location of Well: 1870 feet from the South line and 1135 feet from the East line					
Ground Level Elev. 5981	Producing Formation Mesa Verde		Pool Blanco	Dedicated Acreage: 3.20 Acres	

1. Outline the acreage dedicated to the subject well by colored pencil or hachure marks on the plat below.

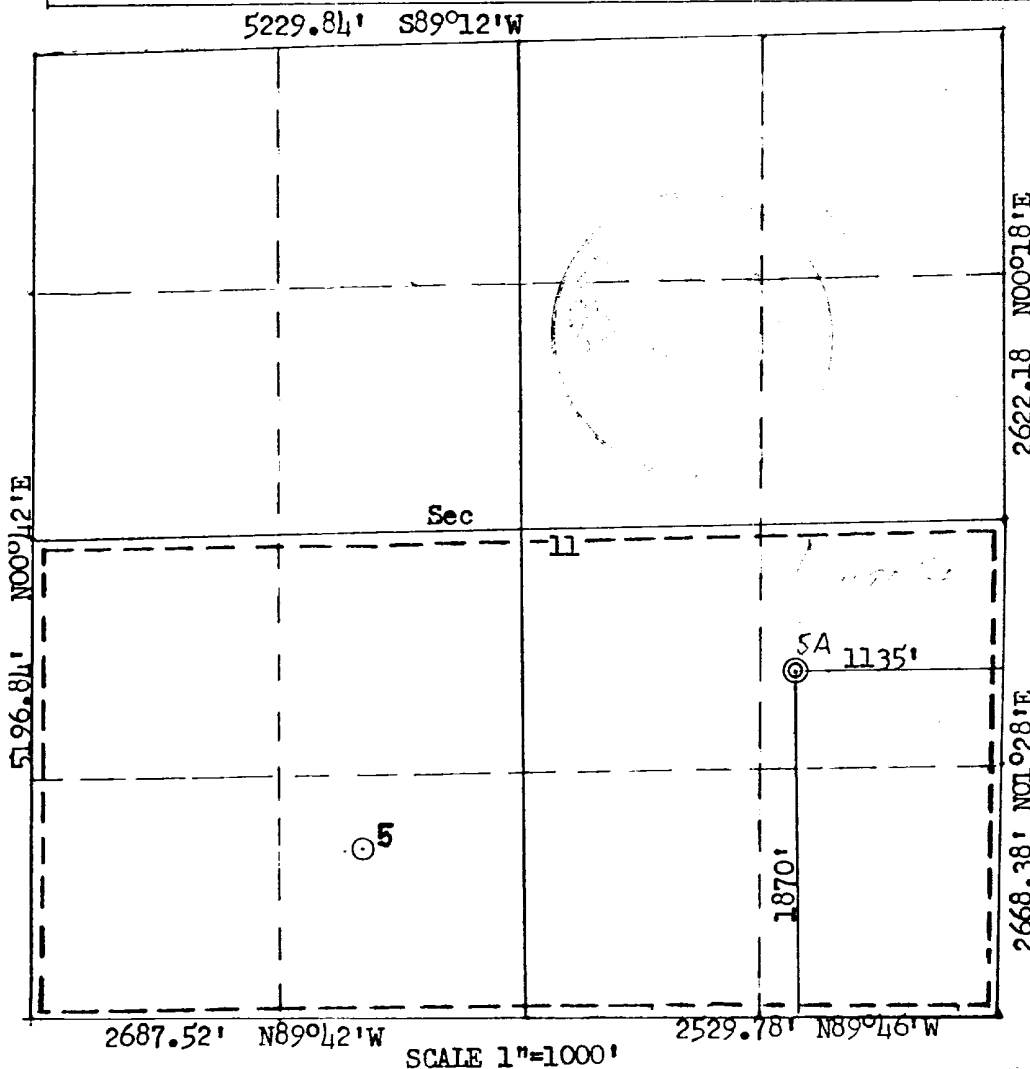
2. If more than one lease is dedicated to the well, outline each and identify the ownership thereof (both as to working interest and royalty).

3. If more than one lease of different ownership is dedicated to the well, have the interests of all owners been consolidated by communitization, unitization, force-pooling, etc?

☐ Yes ☐ No If answer is "yes," type of consolidation _____

If answer is "no," list the owners and tract descriptions which have actually been consolidated. (Use reverse side of this form if necessary.) _____

No allowable will be assigned to the well until all interests have been consolidated (by communitization, unitization, forced-pooling, or otherwise) or until a non-standard unit, eliminating such interests, has been approved by the Commission.



CERTIFICATION	
I hereby certify that the information contained herein is true and complete to the best of my knowledge and belief.	
<i>Charles Mowry</i>	Name
Area Engineer	Position
Getty Oil Company	Company
July 29, 1977	Date
I hereby certify that the well location shown on this plat was plotted from field notes of actual surveys made by me or under my supervision, and that the same is true and correct to the best of my knowledge and belief.	
Date Surveyed	June 23, 1977
Registered Professional Engineer and Land Surveyor	<i>Fred B. Kern</i>
Certificate No.	3950