

UNITED STATES
DEPARTMENT OF THE INTERIOR
GEOLOGICAL SURVEY

APPLICATION FOR PERMIT TO DRILL, DEEPEN, OR PLUG BACK

1a. TYPE OF WORK DRILL <input checked="" type="checkbox"/> DEEPEN <input type="checkbox"/> PLUG BACK <input type="checkbox"/>			5. LEASE DESIGNATION AND SERIAL NO. 30-045-22759 NM-03603-A		
b. TYPE OF WELL OIL WELL <input type="checkbox"/> GAS WELL <input checked="" type="checkbox"/> OTHER <input type="checkbox"/> SINGLE ZONE <input type="checkbox"/> MULTIPLE ZONE <input type="checkbox"/>			6. IF INDIAN, ALLOTTEE OR TRIBE NAME		
2. NAME OF OPERATOR R&G Drilling Company			7. UNIT AGREEMENT NAME		
3. ADDRESS OF OPERATOR c/o Walsh Engineering & Prod. P. O. Box 254, Farmington, New Mexico 87401			8. FARM OR LEASE NAME Hammond		
4. LOCATION OF WELL (Report location clearly and in accordance with any State requirements.)* At surface L 1550' FSL, 970' FWL At proposed prod. zone			9. WELL NO. 47-R		
14. DISTANCE IN MILES AND DIRECTION FROM NEAREST TOWN OR POST OFFICE*			10. FIELD AND POOL, OR WILDCAT Blanco Mesa Verde		
15. DISTANCE FROM PROPOSED* LOCATION TO NEAREST PROPERTY OR LEASE LINE, FT. (Also to nearest drlg. unit line, if any) 970'			11. SEC., T., R., M., OR BLK. AND SURVEY OR AREA Sec. 35-T27N-R8W N.M.P.M.		
16. NO. OF ACRES IN LEASE --			12. COUNTY OR PARISH 13. STATE San Juan New Mexico		
18. DISTANCE FROM PROPOSED LOCATION* TO NEAREST WELL, DRILLING, COMPLETED, OR APPLIED FOR, ON THIS LEASE, FT. None			17. NO. OF ACRES ASSIGNED TO THIS WELL 160		
19. PROPOSED DEPTH 4750'			20. ROTARY OR CABLE TOOLS Rotary		
21. ELEVATIONS (Show whether DF, RT, GR, etc.) 6306' GR			22. APPROX. DATE WORK WILL START* 10-15-77		

23. PROPOSED CASING AND CEMENTING PROGRAM

SIZE OF HOLE	SIZE OF CASING	WEIGHT PER FOOT	SETTING DEPTH	QUANTITY OF CEMENT
12 1/4"	8-5/8"	24.0	300	300 sxs
7-7/8	4 1/2	10.50	4750	

It is proposed to drill this well with rotary tools and using drilling mud as a circulating medium. Production casing will be cemented in such a manner to protect the Pictured Cliffs formation.

Estimated Formation Tops

Pictured Cliffs	2800'
Cliff House	3870
Point Lookout	4550

The SW/4 section 35 is dedicated to this well.

Gas is dedicated

IN ABOVE SPACE DESCRIBE PROPOSED PROGRAM: If proposal is to deepen or plug back, give data on present productive zone and proposed new productive zone. If proposal is to drill or deepen directionally, give pertinent data on subsurface locations and measured and true vertical depths. Give blowout preventer program, if any. For: R&G Drilling Co.

24.

[Signature]
Ewell N. Walsh, P. E.

President, Walsh Engineering
& Production Corp.

DATE Oct. 6, 1977

(This space for Federal or State office use)

PERMIT NO.

APPROVAL DATE

APPROVED BY

TITLE

CONDITIONS OF APPROVAL, IF ANY:

OCT 6 1977

U.S. GEOLOGICAL SURVEY

*See Instructions On Reverse Side

**NEW MEXICO OIL CONSERVATION COMMISSION
WELL LOCATION AND ACREAGE DEDICATION PLAT**

Form C-102
Supersedes C-128
Effective 1-4-65

All distances must be from the outer boundaries of the Section.

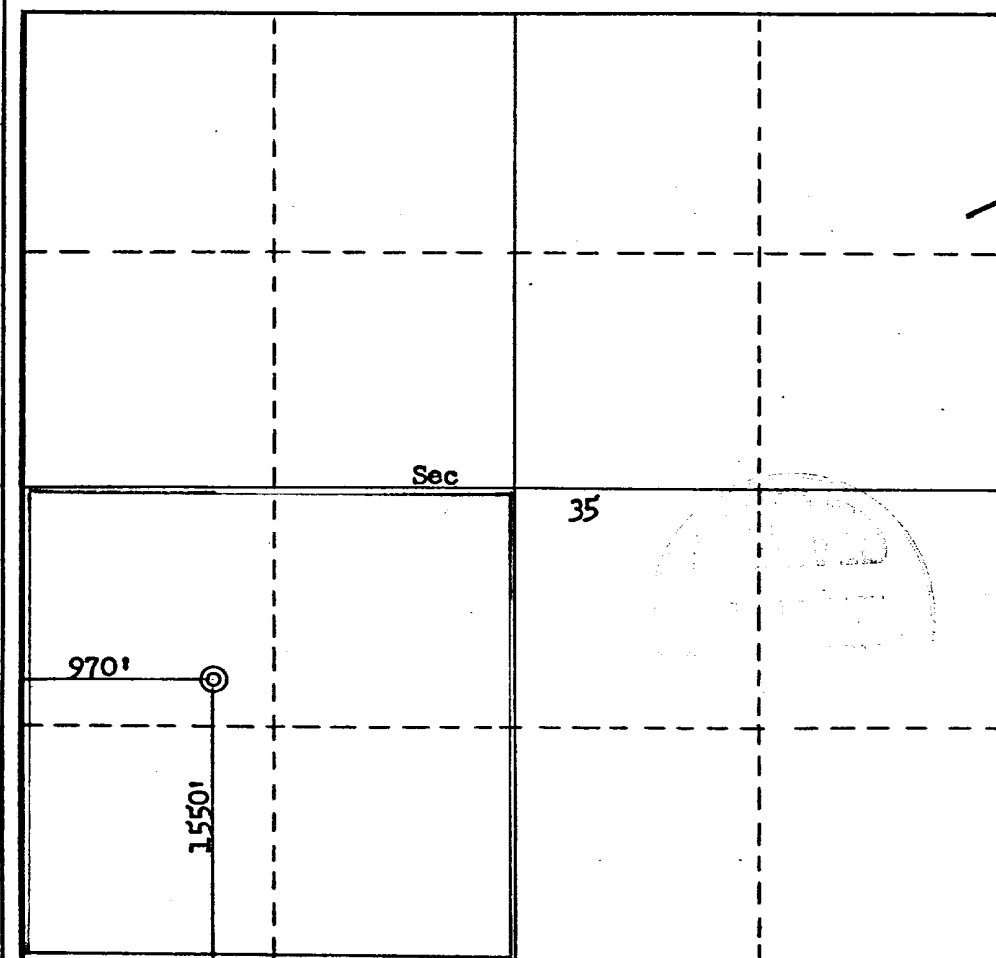
Operator R & G Drilling Company			Lease Hammond		Well No. 47R
Unit Letter L	Section 35	Township 27N	Range 8W	County San Juan	
Actual Footage Location of Well: 1550 feet from the South line and 970 feet from the West line					
Ground Level Elev. 6306	Producing Formation Mesa Verde		Pool Blanco Mesa Verde		Dedicated Acreage: 160 Acres

1. Outline the acreage dedicated to the subject well by colored pencil or hatchure marks on the plat below.
2. If more than one lease is dedicated to the well, outline each and identify the ownership thereof (both as to working interest and royalty).
3. If more than one lease of different ownership is dedicated to the well, have the interests of all owners been consolidated by communitization, unitization, force-pooling, etc?

☐ Yes ☐ No If answer is "yes," type of consolidation _____

If answer is "no," list the owners and tract descriptions which have actually been consolidated. (Use reverse side of this form if necessary.) _____

No allowable will be assigned to the well until all interests have been consolidated (by communitization, unitization, forced-pooling, or otherwise) or until a non-standard unit, eliminating such interests, has been approved by the Commission.



CERTIFICATION

I hereby certify that the information contained herein is true and complete to the best of my knowledge and belief.

Name
Ewell N. Walsh, P. E.

Position
President, Walsh

Company
Engineering & Prod. Cor.

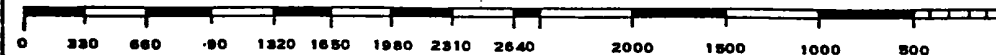
Date
October 6, 1977

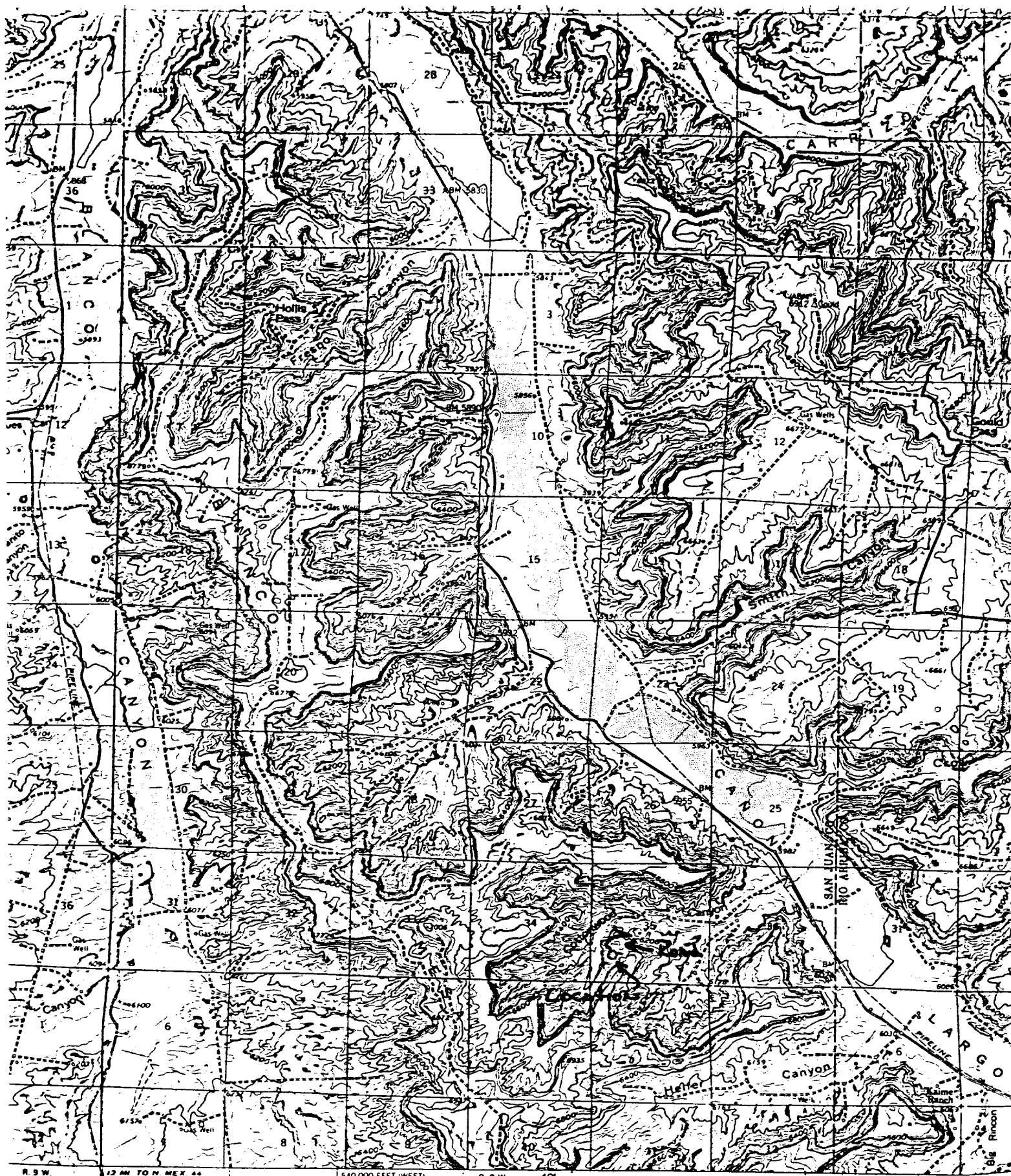
I hereby certify that the well location shown on this plat was plotted from field notes of actual surveys made by me or under my supervision, and that the same is true and correct to the best of my knowledge and belief.

Date Surveyed
September 9, 1977

Registered Professional Engineer and/or Land Surveyor
Fred B. Kerr

Certificate No.
3950





1. edited, and published by the Geological Survey
by USGS and USC&GS

phy by photogrammetric methods from aerial
aphs taken 1955 Field checked 1959
c projection 1927 North American datum
foot grid based on New Mexico coordinate system.
Central zone.

145°
100°
100°

Vicinity Map for
R & G DRILLING CO. #47R Hammond
1550' FSL 970' FWL Sec 35-T27N-R8W
San Juan County, New Mexico

CONTOUR INTERVAL 40 FEET
DATE M. M. 1959

15000
10000
5000

DEVELOPMENT PLAN

R&G DRILLING COMPANY
HAMMOND NO. 47-R
1550'FSL, 970'FWL, Section 35-T27N-R8W
San Juan County, New Mexico

1. Existing roads shown on attached plat.
 2. Planned access from existing road is approximately 800' to new location.
 3. Location - See above
 4. No additional well is planned on this lease at this time.
 5. Production equipment or storage facilities proposed for the well will be installed on location.
 6. Water for drilling will be obtained from water holes in Largo Wash.
 7. Waste materials will be buried on location or in reserve pit.
 8. No permanent camp is planned. A trailer house will be used on location during drilling process.
 9. No airstrip proposed.
 10. See attached plat for layout.
 11. Pits will be filled, location cleaned up, and area not in use for producing well will be reseeded.
-

DEVELOPMENT PLAN

Page 2 of 2

12. Lessee's or operator's representative.

Ewell N. Walsh: 325-8203; Radio Dispatch 325-1873, Car 620.
Address: P. O. Box 254, Farmington, New Mexico 87401

13. CERTIFICATION:

I hereby certify that I, or persons under my direct supervision, have inspected the proposed drillsite and access route; that I am familiar with the conditions which presently exist; that the statements made in this plan are, to the best of my knowledge, true and correct; and, that the work associated with the operations proposed herein will be performed by: _____

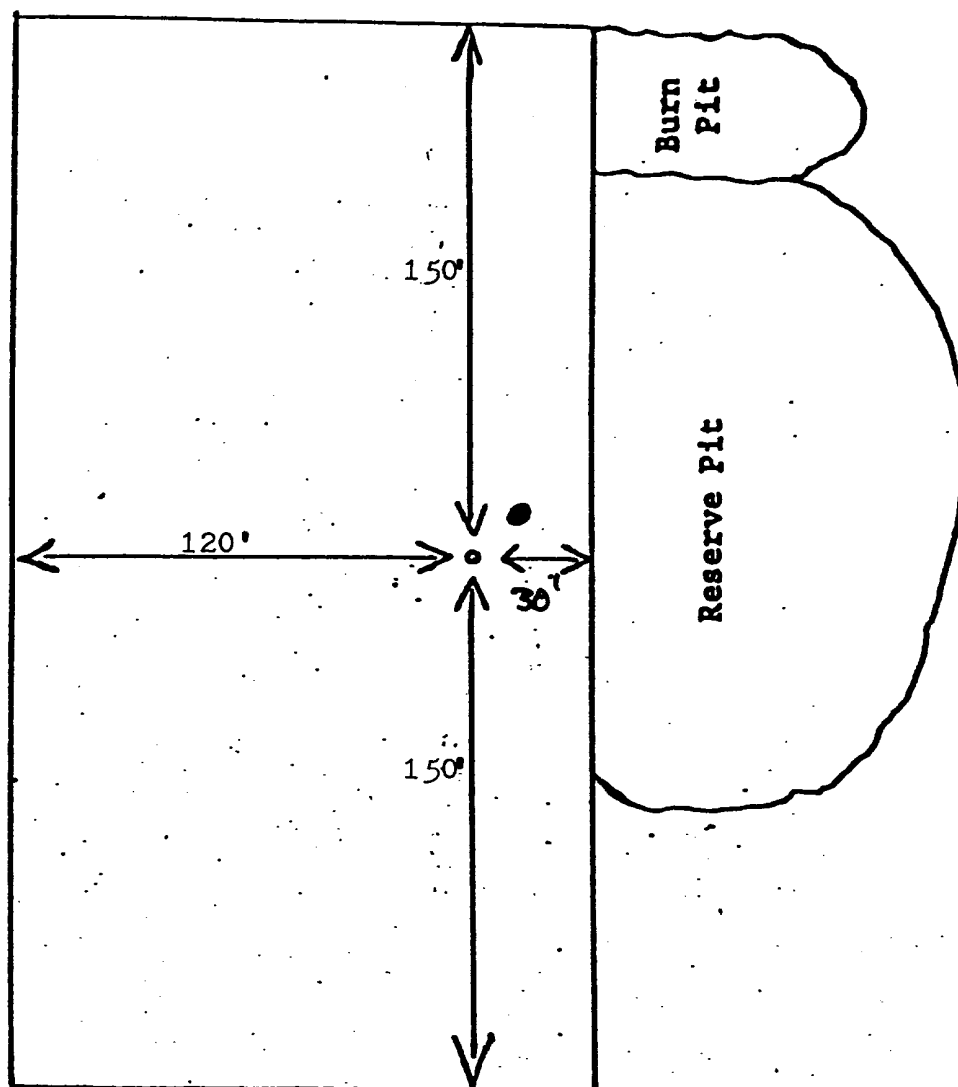
R&G DRILLING COMPANY

and its contractors and subcontractors in conformity with this plan and the terms and conditions under which it is approved.



Ewell N. Walsh, P.E., President,
Walsh Engineering & Production
Corporation

R&G DRILLING COMPANY
HAMMOND NO. 47-R
1550' FSL, 970' FWL, Section 35-T27N-R8W
San Juan County, New Mexico



R&G DRILLING COMPANY
HAMMOND NO. 47-R
1550' FSL, 970' FWL, Section 35-T27N-R8W
San Juan County, New Mexico

Seven Point Well Control Program

1. Surface Casing.
See Application for Permit to Drill.
 2. Spools and Flanges
 - A. Surface Casing - 10" Series 600, 2000 psi W.P.
 - B. Production, 10" Series 600, 2000 psi W.P.
 - C. Tubing Head - Series 600, 2000 psi W.P.
 3. Intermediate Casing.
None
 4. Blowout Preventers
Production Hole -10" 2000 psi
Fill, kill and choke manifold - 5000 psi W.P.
 5. Addition Equipment (If necessary)
 - A. Kelly Cock
 - B. Bit Float
 - C. Degasser
 - D. Pit Level Indicator
 - E. Sub with Valve for Drill Pipe.
 6. Anticipated Bottom Hole Pressure.
1200 psi. Current mud program is for 9.2 lb./gal mud with hydrostatic head of 2250 psi at 4750 feet. Mud weight will be increased if necessary for higher pressures.
 7. Drilling Fluid.
Low solids, medium water loss.
-