

UNITED STATES
DEPARTMENT OF THE INTERIOR
GEOLOGICAL SURVEY

APPLICATION FOR PERMIT TO DRILL, DEEPEN, OR PLUG BACK

1a. TYPE OF WORK

DRILL ☒DEEPEN ☐PLUG BACK ☐

b. TYPE OF WELL

OIL
WELL ☐GAS
WELL ☒

OTHER

SINGLE
ZONE ☐MULTIPLE
ZONE ☐

2. NAME OF OPERATOR

Dugan Production Corp.

3. ADDRESS OF OPERATOR

Box 234, Farmington, NM 87401

4. LOCATION OF WELL (Report location clearly and in accordance with any State requirements.)*

At surface

790' FNL - 2000' FWL

At proposed prod. zone

14. DISTANCE IN MILES AND DIRECTION FROM NEAREST TOWN OR POST OFFICE*

14 miles south Farmington, NM

15. DISTANCE FROM PROPOSED*

LOCATION TO NEAREST
PROPERTY OR LEASE LINE, FT.
(Also to nearest drlg. unit line, if any)

790'

16. NO. OF ACRES IN LEASE

585.12

17. NO. OF ACRES ASSIGNED-
TO THIS WELL

185.12

18. DISTANCE FROM PROPOSED LOCATION*

TO NEAREST WELL, DRILLING, COMPLETED, $\frac{1}{2}$ mi. approx
OR APPLIED FOR, ON THIS LEASE, FT.

19. PROPOSED DEPTH

1430'

20. ROTARY OR CABLE TOOLS

Rotary

21. ELEVATIONS (Show whether DF, RT, GR, etc.)

6151' GR

22. APPROX. DATE WORK WILL START*

5-20-78

23.

PROPOSED CASING AND CEMENTING PROGRAM

SIZE OF HOLE	SIZE OF CASING	WEIGHT PER FOOT	SETTING DEPTH	QUANTITY OF CEMENT
6-1/4"	5-1/2"	14#	30'	5 sx
4-3/4"	2-7/8"	6.4#	1430'	75 sx

Plan to drill 4-3/4" hole with air or minimum mud to 1430' to test Pictured Cliffs formation.

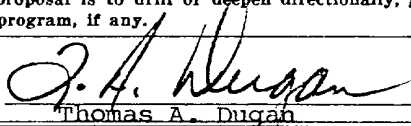
Do not plan to have blowout preventer on well while drilling. Master valve and stripper head will be installed while completing.

NMERB Requirement: Gas not dedicated.

IN ABOVE SPACE DESCRIBE PROPOSED PROGRAM: If proposal is to deepen or plug back, give data on present productive zone and proposed new productive zone. If proposal is to drill or deepen directionally, give pertinent data on subsurface locations and measured and true vertical depths. Give blowout preventer program, if any.

24.

SIGNED


Thomas A. Dugan

TITLE

Petroleum Engineer

DATE

3-22-78

(This space for Federal or State office use)

PERMIT NO.

APPROVAL DATE

APPROVED BY

TITLE

DATE

CONDITIONS OF APPROVAL, IF ANY:

*See Instructions On Reverse Side

NEW MEXICO OIL CONSERVATION COMMISSION
WELL LOCATION AND ACREAGE DEDICATION PLAT

Form C-102
Supersedes C-128
Effective 1-1-65

All distances must be from the outer boundaries of the Section.

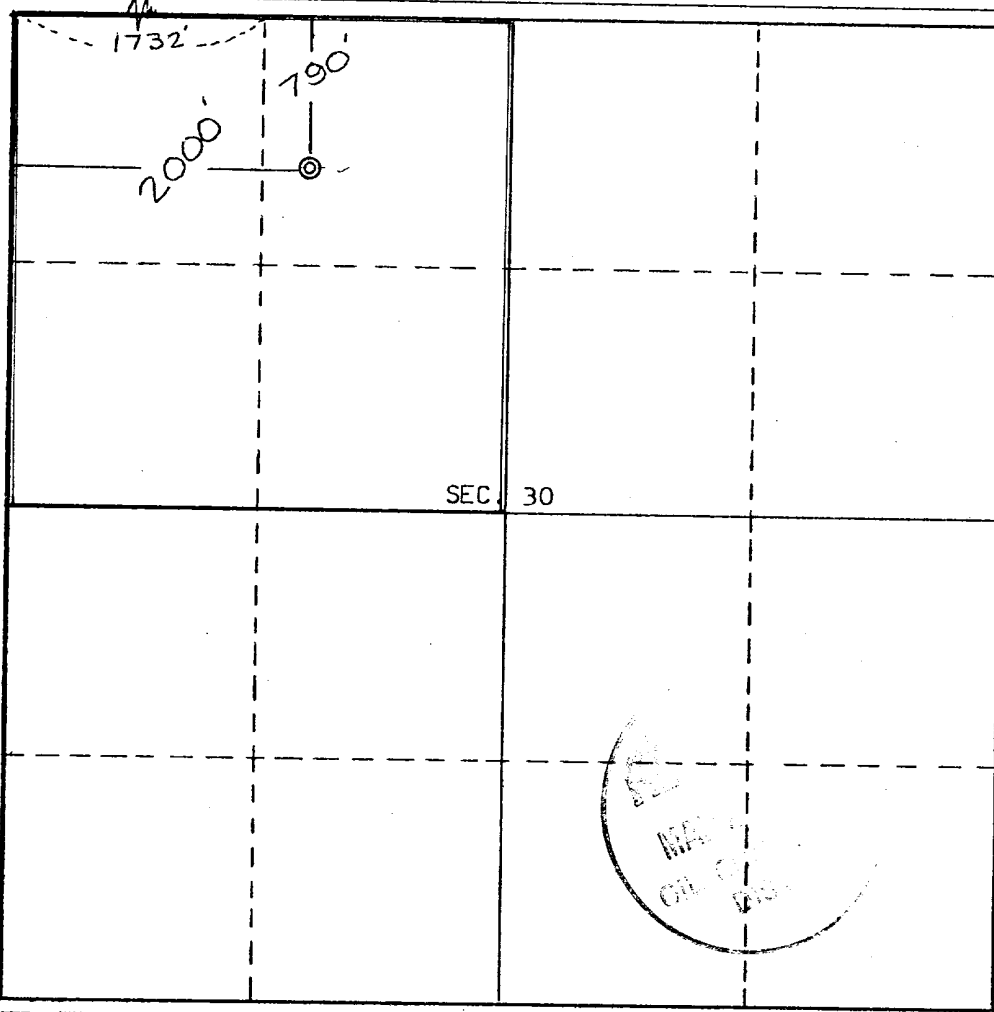
Operator Dugan Production Corporation			Lease FAF		Well No. 3
Unit Letter C	Section 30	Township 27 North	Range 13 West	County San Juan	
Actual Footage Location of Well: 790 feet from the North line and 2000 feet from the West line					
Ground Level Elev. 6151	Producing Formation Pictured Cliffs	Pool WAW	Dedicated Acreage: 185.12 158.12 Acres		

1. Outline the acreage dedicated to the subject well by colored pencil or hachure marks on the plat below.
2. If more than one lease is dedicated to the well, outline each and identify the ownership thereof (both as to working interest and royalty).
3. If more than one lease of different ownership is dedicated to the well, have the interests of all owners been consolidated by communitization, unitization, force-pooling, etc?

☐ Yes ☐ No If answer is "yes," type of consolidation _____

If answer is "no," list the owners and tract descriptions which have actually been consolidated. (Use reverse side of this form if necessary.) _____

No allowable will be assigned to the well until all interests have been consolidated (by communitization, unitization, forced-pooling, or otherwise) or until a non-standard unit, eliminating such interests, has been approved by the Commission.



CERTIFICATION

I hereby certify that the information contained herein is true and complete to the best of my knowledge and belief.

Thomas A. Dugan
Name

Thomas A. Dugan

Position

Petroleum Engineer

Company

Dugan Production Corp.

Date

3-22-78

REGISTERED LAND SURVEYOR
STATE OF NEW MEXICO
I hereby certify that the well location shown on this plat was plotted from field notes of actual surveys made by me or under my supervision, and that the same is true and correct to the best of my knowledge and belief.
E.V. ECHOHAWK
3602

Date Surveyed

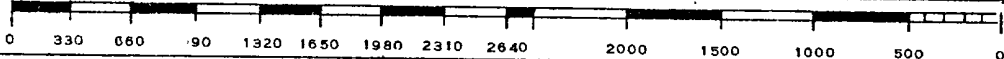
March 7, 1978

Registered Professional Engineer
and/or Land Surveyor

E.V. Echohawk

Certificate No. 3602

E.V. Echohawk LS

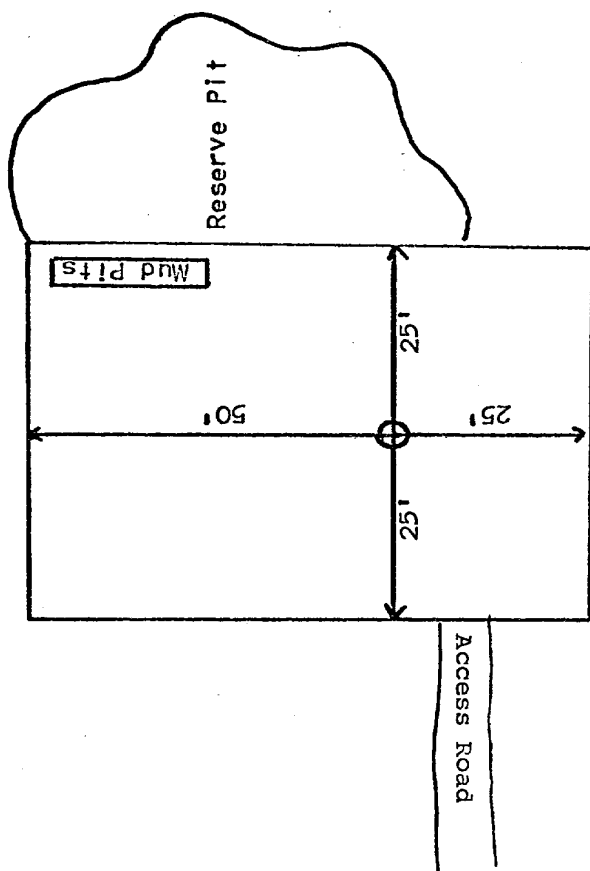


DUGAN PRODUCTION CORP.

FAF #3

Proposed Location Layout

N



DEVELOPMENT PLAN

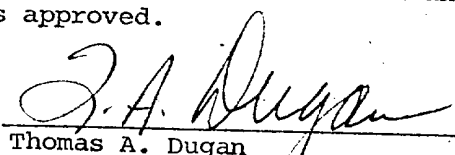
Dugan Production Corp.

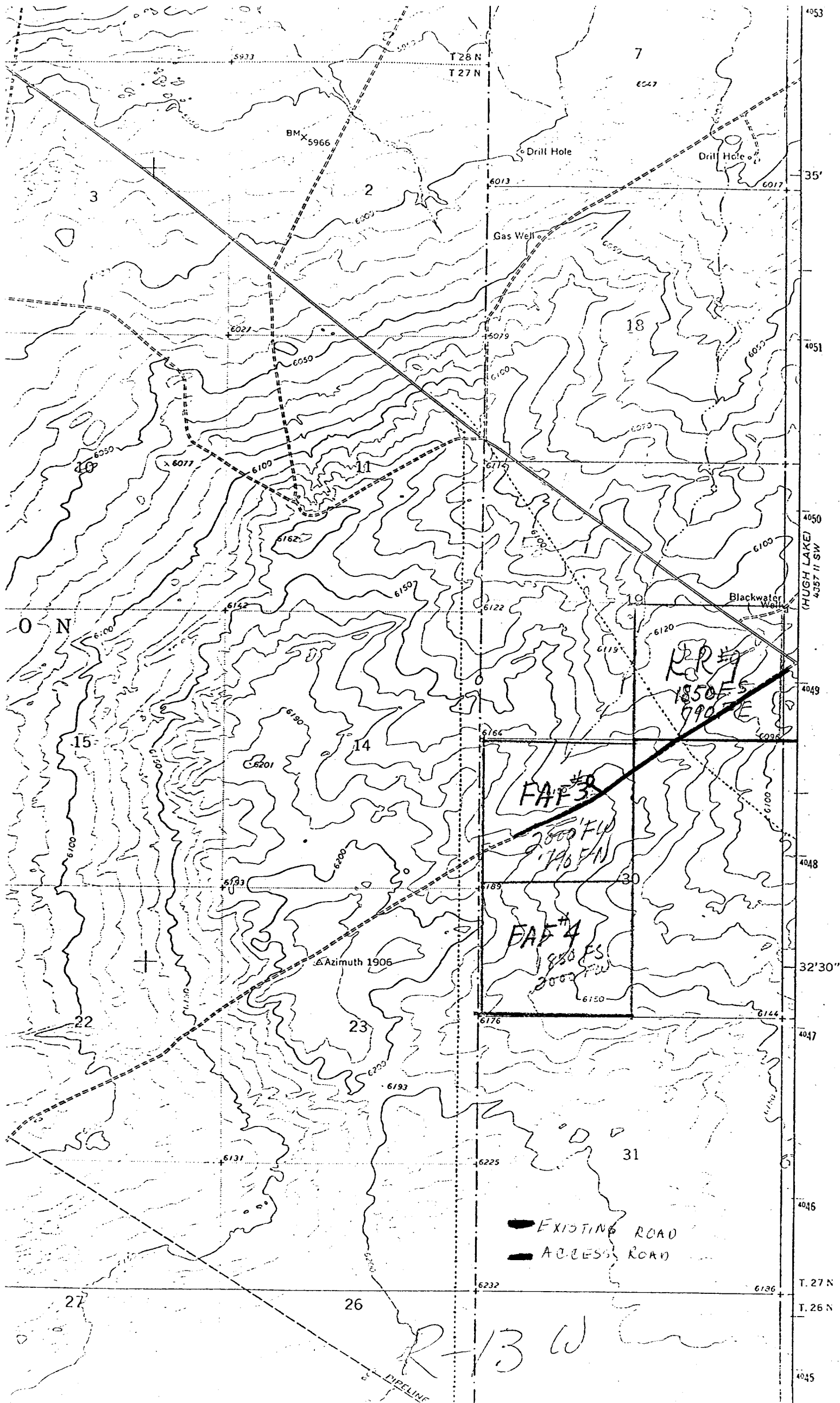
FAF #3

1. Existing roads and existing wells are shown on attached plat.
2. Planned access from existing road approximately 400' to new location. Will leave natural grass and small vegetation on roadway. Will remove large brush or trees from road. Do not plan to make road grade or bar ditches. Will bottom-out any arroyo we cross and not install culverts.
3. Location of well: 790' FNL - 2000' FWL
Section 30, T27N, R13W
San Juan County, NM
4. One additional well(s) planned on this lease at this time.
5. Separator and flow line will be located within 50' of wellhead.
6. Water will be secured from San Juan River.
7. Waste materials will be buried on location or in reserve pit.
8. No permanent camp is planned; trailer house will be used on location while drilling.
9. Do not plan to build airstrip.
10. See attached plat for proposed location layout.
11. A general description of the topography, soil characteristics, geologic features, flora and fauna; other surface-use activities and surface ownership of involved lands, proximity of water, occupied dwellings, archeological, historical or cultural sites can be found in the archeologist's report.
12. Geologic name of surface formation: Recent Blow Sand
13. Estimated tops of important geologic markers:
Kirtland 67' Fruitland 900' Pictured Cliffs 1338'
14. Estimated depths of anticipated water, oil, gas, or other mineral bearing formations which are expected to be encountered: Pictured Cliffs - gas - 1338'
15. We do not anticipate to encounter any abnormal pressures or temperatures or any potential hazards such as those associated with hydrogen sulfide.
16. Will clean up location, fill and level pits, level ruts in road, reseed location and road with Seed Mixture #2 and paint equipment with Sandstone Brown.
17. Operator's Representative:
Thomas A. Dugan
Box 234
Farmington, NM 87401
18. Certification: The following statement must be signed by the lessee's or operator's field representative who is identified in Item #17 of the Plan:

I hereby certify that I, or persons under my direct supervision, have inspected the proposed drillsite and access route; that I am familiar with the conditions which presently exist; that the statements made in this Plan are, to the best of my knowledge, true and correct; and, that the work associated with the operations proposed herein will be performed by Dugan Production Corp. and its contractors and subcontractors in conformity with this Plan and the terms and conditions under which it is approved.

Date: 3-22-78


Thomas A. Dugan
Petroleum Engineer



STATE OF NEW MEXICO
OIL CONSERVATION COMMISSION
1000 Rio Brazos Road
Aztec, New Mexico 87410

April 4, 1978

Dugan Production Corp.
Box 234
Farmington, New Mexico

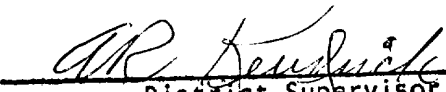
Attention: _____

SUBJECT: NON-STANDARD GAS PRORATION UNIT CONSISTING OF 185.12 ACRES
IN THE Waw Pictured Cliffs Ext. GAS POOL DESCRIBED AS
FOLLOWS:

TOWNSHIP 27 NORTH, RANGE 13 WEST, NMPM

SECTION: 30 NW/4

By authority granted me by Rule 5(B) of Order No. R-1670, as amended, the
above-described acreage has been approved as a non-standard gas proration
unit to be dedicated to the FAF
Well No. 3, located 790/N; 2000/W of said
Section 30.


District Supervisor
District #3

cc: Oil Conservation Commission
Santa Fe, New Mexico