

UNITED STATES
DEPARTMENT OF THE INTERIOR
BUREAU OF LAND MANAGEMENTFORM APPROVED
Budget Bureau No. 1004-0135
Expires: March 31, 1993

SUNDRY NOTICES AND REPORTS ON WELLS

Do not use this form for proposals to drill or to deepen or reentry to a different reservoir.

Use "APPLICATION FOR PERMIT--" for such proposals. **OCT -3 PM 2:31**

SUBMIT IN TRIPLICATE

1. Type of Well
Oil ☐ Gas ☐
Well ☐ Well ☒ Other ☐

2. Name of Operator

Merrion Oil & Gas Corporation (14634)

3. Address and Telephone No.

610 Reilly Avenue, Farmington, NM 87401-2634 (505) 327-9801

4. Location of Well (Footage, Sec., T., R., M., or Survey Description)

2000' fsl & 1850' fwl (ne sw)

Section 3, T24N, R6W

K-35-27N-13W

5. Lease Designation and Serial No.

NM-33047

6. If Indian, Allottee or Tribe Name

7. If Unit or CA, Agreement Designation

8. Well Name and No.

Hi Roll No. 2

9. API Well No.

10. Field and Pool, or Exploratory Area

WAW Fruitland/PC

11. County or Parish, State

San Juan County,
New Mexico

12. CHECK APPROPRIATE BOX (s) TO INDICATE NATURE OF NOTICE, REPORT, OR OTHER DATA

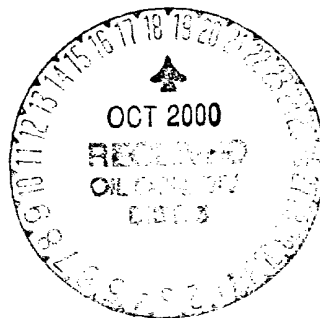
TYPE OF SUBMISSION

TYPE OF ACTION

☒ Notice of Intent☒ Abandonment☐ Change of Plans☐ Subsequent Report☐ Recompletion☐ New Construction☐ Final Abandonment Notice☐ Plugging Back☐ Non-Routine Fracturing☐ Casing Repair☐ Water Shut-Off☐ Altering Casing☐ Conversion to Injection☐ Other☐ Dispose Water(Note: Report results of multiple completion on
Completion or Recompletion Report and Log form.)

13. Describe Proposed or completed Operations (Clearly state all pertinent details, and give pertinent dates, including estimated date of starting any proposed work. If well is directionally drilled, give subsurface locations and measured and true vertical depths for all markers and zones pertinent to this work.)*

Merrion Oil & Gas proposes to plug and abandon the subject well according to the attached procedure.



14. I hereby certify that the foregoing is true and correct

Signed

Connie S. Dinning

Title Engineer

Date 10/3/00

(This space for Federal or State office use)

Approved By

Title

Date 10/16/00

Conditions of approval, if any:

Merrion Oil & Gas Corporation

Plug & Abandon Procedure

October 2, 2000

Well:	Hi Roll No. 2	Field:	WAW Fruitland/PC
Location:	2000' fsl & 1850' fwl (ne sw) Sec. 3, T24N, R6W, NMPM San Juan County, New Mexico	Elevation:	6034' GR 6039' KB
		By:	Connie Dinning

Note: Cement volume uses 10% excess.

1. Comply to all NMOCD, BLM and Merrion safety regulations.
2. Load casing w/ water. Pull and LD 5/8" rods and 1" IJ tubing.
3. Pump in 15 bbls. water to establish injection.
4. Pump 40 sx, (47 cu. ft) Class B cement.
5. Shut down, WOC. RIH, tag cement.
6. Pump surface plug if necessary.
7. Cut off casing below surface. Install P&A marker with cement to comply with regulations.
RDMOL.
8. Restore location per BLM stipulations.

Merrion Oil & Gas Corporation Wellbore Schematic

Hi Roll No. 2

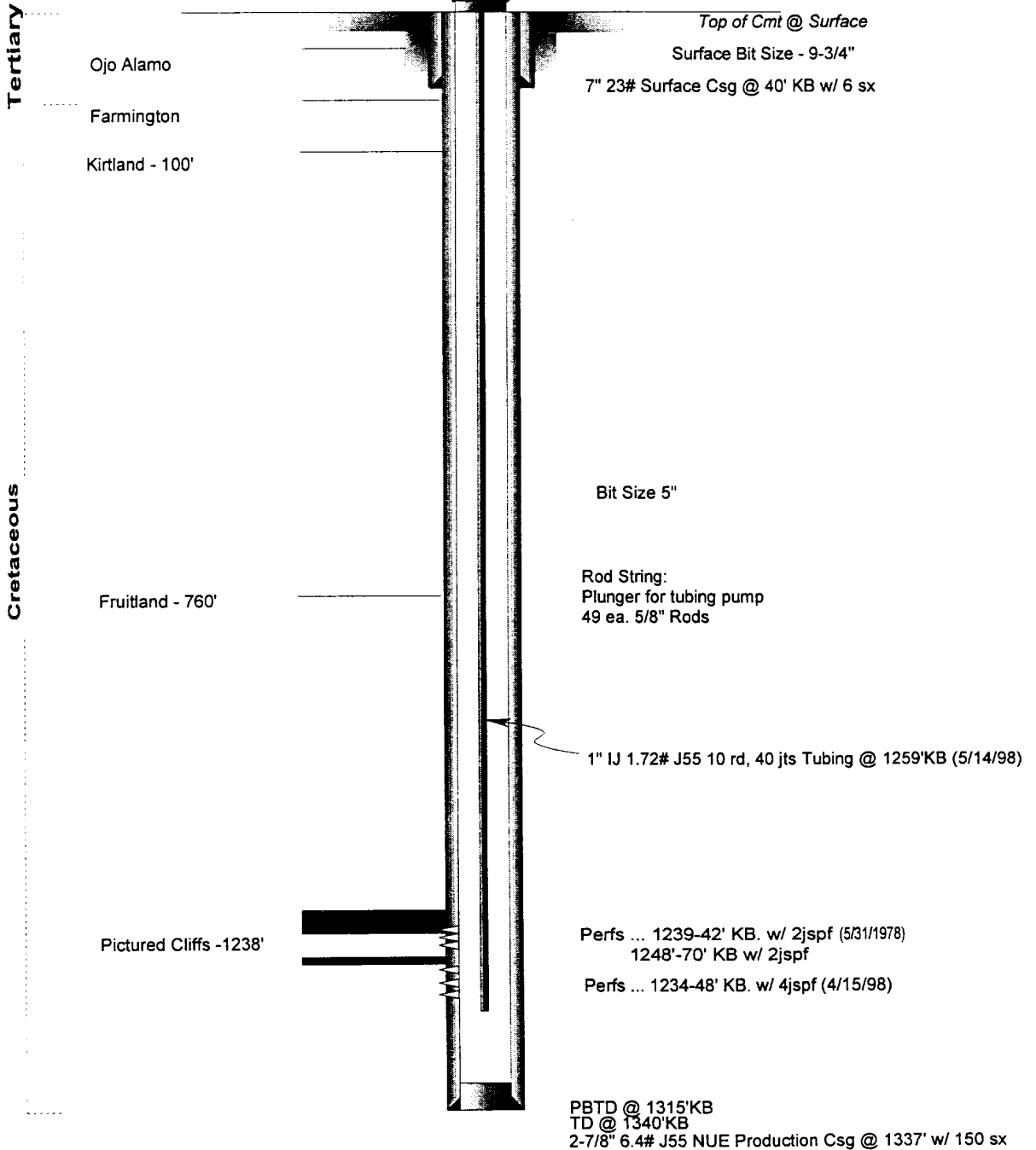
Current Wellbore Configuration

Location: 2000' fsl & 1850' fwl (ne sw)
Sec 35, T27N, R13W, NMPM
San Juan County, New Mexico

Elevation: 6034' GL
6039' RKB

Date: Oct 4, 1996 Update: Oct 3, 2000 CSD

Prepared by: Steven S. Dunn



Merrion Oil & Gas Corporation

Wellbore Schematic

Hi Roll No. 2

Current Wellbore Configuration

Location: 2000' fsl & 1850' fwl (ne sw)
Sec 35, T27N, R13W, NMPM
San Juan County, New Mexico

Elevation: 6034' GL
6039' RKB

Date: Oct 4, 1996 Update: Oct 3, 2000 CSD

Prepared by: Steven S. Dunn

Tertiary

Ojo Alamo

Farmington

Kirtland - 100'

Top of Cmt @ Surface

Surface Bit Size - 9-3/4"

7" 23# Surface Csg @ 40' KB w/ 6 sx

Cretaceous

Fruitland - 760'

Bit Size 5"

Plug No. 1 - Inside plug from TD to surface,
pump 40 sx (47 cf) Class, B Cement

Pictured Cliffs - 1238'

Perfs ... 1239-42' KB. w/ 2jspf (5/31/1978)
1248'-70' KB w/ 2jspf

Perfs ... 1234-48' KB. w/ 4jspf (4/15/98)

PBTD @ 1315'KB

TD @ 1340'KB

2-7/8" 6.4# J55 NUE Production Csg @ 1337' w/ 150 sx