

**UNITED STATES  
DEPARTMENT OF THE INTERIOR  
GEOLOGICAL SURVEY**

SUBMIT IN DUPLICATE\*

(See other instructions on reverse side)

Form approved.  
Budget Bureau No. 42-R355.5.

5. LEASE DESIGNATION AND SERIAL NO.

N.M. 8409

6. IF INDIAN, ALLOTTEE OR TRIBE NAME

7. UNIT AGREEMENT NAME

8. FARM OR LEASE NAME

Federal 18

9. WELL NO.

1

10. FIELD AND POOL, OR WILDCAT

WAW Pictured Cliffs

11. SEC., T., R., M., OR BLOCK AND SURVEY OR AREA

Sec. 18, T27N, R13W

12. COUNTY OR PARISH

San Juan

13. STATE

New Mexico

**WELL COMPLETION OR RECOMPLETION REPORT AND LOG \***

1a. TYPE OF WELL: OIL WELL  GAS WELL  DRY  Other \_\_\_\_\_

b. TYPE OF COMPLETION: NEW WELL  WORK OVER  DEEP-EN  PLUG BACK  DIFF. RESVR.  Other \_\_\_\_\_

2. NAME OF OPERATOR  
DOME PETROLEUM CORP.

3. ADDRESS OF OPERATOR  
501 Airport Drive, Suite 107, Farmington, NM 87401

4. LOCATION OF WELL (Report location clearly and in accordance with any State requirements)\*  
At surface 1450' FSL, 990' FEL Sec. 18, T27N, R13W  
At top prod. interval reported below  
At total depth

14. PERMIT NO. \_\_\_\_\_ DATE ISSUED \_\_\_\_\_

15. DATE SPUNDED 9/7/78 16. DATE T.D. REACHED 9/10/78 17. DATE COMPL. (Ready to prod.) 9/15/78 18. ELEVATIONS (DF, RKB, RT, GR, ETC.)\* 6049' GR. 19. ELEV. CASINGHEAD 6049'

20. TOTAL DEPTH, MD & TVD 1500' 21. PLUG, BACK T.D., MD & TVD 1465' 22. IF MULTIPLE COMPL., HOW MANY\* \_\_\_\_\_ 23. INTERVALS DRILLED BY \_\_\_\_\_ ROTARY TOOLS 0 - 1500' CABLE TOOLS \_\_\_\_\_

24. PRODUCING INTERVAL(S), OF THIS COMPLETION—TOP, BOTTOM, NAME (MD AND TVD)\* 1329' - 1410' Pictured Cliffs 25. WAS DIRECTIONAL SURVEY MADE No

26. TYPE ELECTRIC AND OTHER LOGS RUN Dual Induction-Laterolog, Formation Density/Neutron 27. WAS WELL CORED No

28. CASING RECORD (Report all strings set in well)

CASING SIZE	WEIGHT, LB./FT.	DEPTH SET (MD)	HOLE SIZE	CEMENTING RECORD	AMOUNT PULLED
7"	20	37.5'	9-7/8"	30 Sacks	None
2-7/8"	6.5	1496.0'	4-3/4"	150 Sacks	None

29. LINER RECORD

SIZE	TOP (MD)	BOTTOM (MD)	SACKS CEMENT*	SCREEN (MD)

30. TUBING RECORD

SIZE	DEPTH SET (MD)	PACKER SET (MD)

31. PERFORATION RECORD (Interval, size and number)

1329'-1335', 1341'-1345' with 2 Jet Shots per foot.

32. ACID, SHOT, FRACTURE, CEMENT SQUEEZE, ETC.

DEPTH INTERVAL (MD)	AMOUNT AND KIND OF MATERIAL USED

33. PRODUCTION

DATE FIRST PRODUCTION 9/15/78 PRODUCTION METHOD (Flowing, gas lift, pumping—size and type of pump) Flowing

DATE OF TEST	HOURS TESTED	CHOKE SIZE	PROD'N. FOR TEST PERIOD	OIL—BBL.	GAS—MCF.	WATER—BBL.	GAS-OIL RATIO
9/26/78	3	3/4"	→	0	98	ESTM	-

FLOW. TUBING PRESS. 43 psi CASING PRESSURE S.I.C.P. 224 psi CALCULATED 24-HOUR RATE → OIL—BBL. 0 GAS—MCF. 784 WATER—BBL. ESTM OIL GRAVITY-API (CORR.) -

34. DISPOSITION OF GAS (Sold, used for fuel, vented, etc.) Sold TEST WITNESSED BY Engineering & Production Services, Inc.

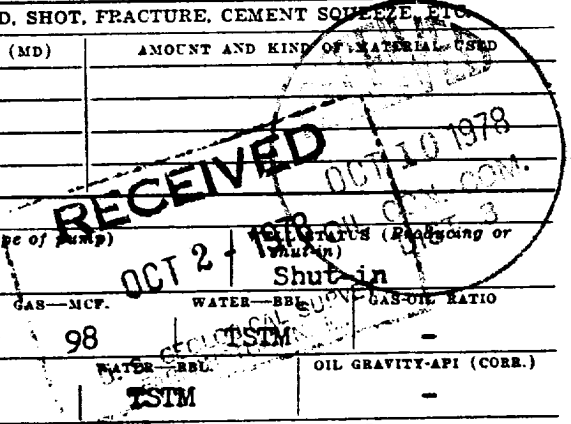
35. LIST OF ATTACHMENTS None

36. I hereby certify that the foregoing and attached information is complete and correct as determined from all available records

SIGNED H. D. Hollingsworth TITLE Drilling Foreman DATE 9/27/78

\*(See Instructions and Spaces for Additional Data on Reverse Side)

N/M DCC



38. Geologic Markers

TOP  
Meas. Depth

Kirtland	180'
Fruitland	960'
Fruitland Coal	1295'
Pictured Cliffs	1328'