

ILLEGIBLE

UNITED STATES
DEPARTMENT OF THE INTERIOR
GEOLOGICAL SURVEY

SUBMIT IN TRIPLICATE*
(Other instructions on
reverse side)

Form approved,
Budget Bureau No. 42-R1425.

30 - 095 - 23216

APPLICATION FOR PERMIT TO DRILL, DEEPEN, OR PLUG BACK

DRILL ☒ XX

DEEPEN ☐

PLUG BACK ☐

RE-DRILL ☐ XX

RE-DEEPEN ☒ XX

MULTIPLE
ZONES ☐

Applicant: American Oilfield Company

1000 Lincoln St., Suite 501, Denver, Colorado 80295

4. DISTANCE FROM PROPOSED WELL (Report location in accordance with any State requirements.)

1650' FSL & 990' FEL (NE SE) (UNIT I) Section 35

5. PROPOSED PROD. ZONE

Approx. Same

16. DISTANCE IN MILES AND DIRECTION FROM NEAREST TOWN OR POST OFFICE*

19 miles Southeast of Blanco, New Mexico

15. DISTANCE FROM PROPOSED* 990' from lease line

LOCATION TO NEAREST
PROPERTY OR LEASE LINE, FT.
(Also to nearest drag unit line, if any)

16. NO. OF ACRES IN LEASE

2560 more or
less

18. DISTANCE FROM PROPOSED LOCATION* approx. 700'

TO NEAREST WELL DRILLING, COMPLETED
OR APPLIED FOR, ON THIS LEASE, FT.

SE-SE SEC. 35

19. PROPOSED DEPTH

4925'

17. NO. OF ACRES ASSIGNED
TO THIS WELL

E/2 Sec. 35 320 acres

20. ROTARY OR CABLE TOOLS

Rotary

22. APPROX. DATE WORK WILL START*

Dirt work when appl. app'd
Approx. Oct. 5, 1978

6133' GL (Ungraded)

PROPOSED CASING AND CEMENTING PROGRAM

SIZE OF HOLE	SIZE OF CASING	WEIGHT PER FOOT	SETTING DEPTH	QUANTITY OF CEMENT
12-1/4"	8-5/8"OD	24	250'	250 sx.
6-1/4"	4-1/2"OD	10.5	T.D.	350 sx.

Propose to drill well to depth sufficient to test the Mesaverde formation. If productive set 4-1/2" casing at T.D., perforate productive intervals, treat if necessary, and complete.

Attached are: Well Location and Acreage Dedication Plat
Drilling Plan
Surface Use and Operations Plan

zone is delineated

RECEIVED

SEP 11 1978

U. S. GEOLOGICAL SURVEY
FARMINGTON, N. M.

IN ABOVE SPACE DESCRIBE PROPOSED PROGRAM: If proposal is to deepen or plug back, give data on present productive zone and proposed new productive zone. If proposal is to drill or deepen directionally, give pertinent data on subsurface locations and measured and true vertical depths. Give blowout preventer program, if any.

21.

SIGNED

TITLE Operations Manager

DATE September 7, 1978

(This space for Federal or State office use)

PERMIT NO.

APPROVAL DATE

APPROVED BY

TITLE

DATE

CONDITIONS OF APPROVAL, IF ANY:

oh Erach

*See Instructions On Reverse Side

NMOC

Instructions

General: This form is designed for submitting proposals to perform certain well operations, as indicated on the front and instructions, and a copy of the form must be submitted to the State agency, or both, pursuant to applicable Federal and/or State laws and regulations. The number of copies to be submitted, and the number of copies to be submitted, particularly with regard to local, area, or regional procedures, should be obtained from the local Federal and/or State office.

Item 1: If the proposal is to redrill to the same reservoir at a different subsurface location or to a new reservoir, use the form with applicable State or Federal regulations concerning subsequent work proposals or reports on the well.

Item 4: If there are no applicable State requirements, locations on Federal or Indian land should be described in accordance with Federal or Federal office for specific instructions.

Item 14: Needed only when location of well cannot readily be found by road from the land or lease description. A plat, or plat, separation of a section of the roads to, and the surveyed location of, the well, and any other required information, should be furnished when required by Federal or State agency.

Items 15 and 18: If well is to be, or has been directionally drilled, give distances for subsurface location of hole in any present or objective plan.

Item 22: Consult applicable Federal or State regulations, or appropriate officials, concerning approval of the proposal before operations are initiated.

NEW MEXICO OIL CONSERVATION COMMISSION
WELL LOCATION AND ACREAGE DEDICATION PLAT

Form G-102
Supersedes G-128
Effective 1-1-61

All distances must be from the outer boundaries of the section

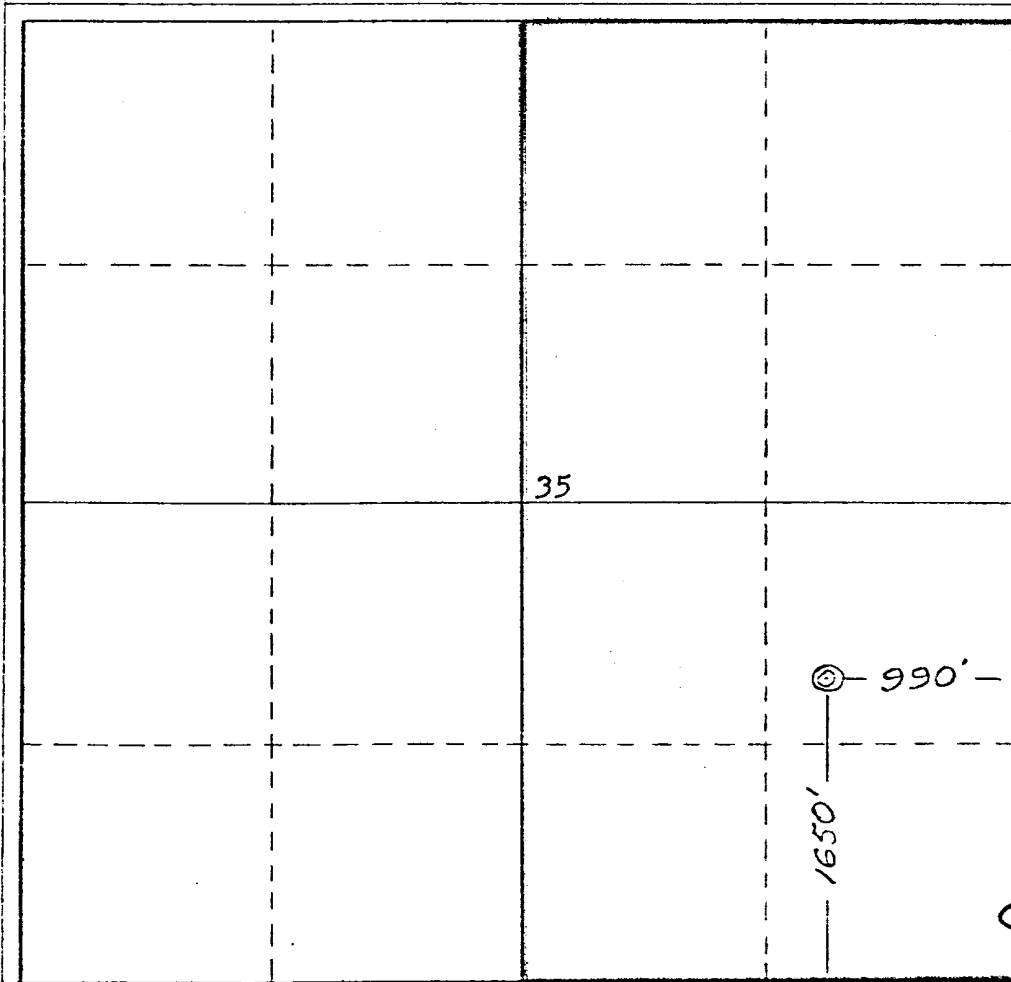
OWNER ATLANTIC RICHFIELD COMPANY			LEASEE HAMMOND W.N. FEDERAL		PLAT NO. 7-A
Section	Range	Township	Block	County	
I	35	27 NORTH	8 WEST	SAN JUAN	
Approximate Location of Well:					
1650	West from line	SOUTH	Line and	990	East from line
6133	Spot Elev.	Producing Formation	Pool	Dedicated Acreage:	
		Mesaverde	Blanco	E/2	320 Acres

1. Outline the acreage dedicated to the subject well by colored pencil or hatchure marks on the plat below.
2. If more than one lease is dedicated to the well, outline each and identify the ownership thereof (both as to working interest and royalty). N/A 100% Atlantic Richfield Company
3. If more than one lease of different ownership is dedicated to the well, have the interests of all owners been consolidated by communitization, unitization, force-pooling, etc?

☐ Yes ☐ No If answer is "yes," type of consolidation _____

If answer is "no," list the owners and tract descriptions which have actually been consolidated. (Use reverse side of this form if necessary.) _____

No allowable will be assigned to the well until all interests have been consolidated (by communitization, unitization, forced-pooling, or otherwise) or until a non-standard unit, eliminating such interests, has been approved by the Commission.

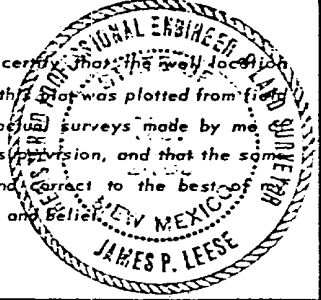


CERTIFICATION

I hereby certify that the information contained herein is true and complete to the best of my knowledge and belief.

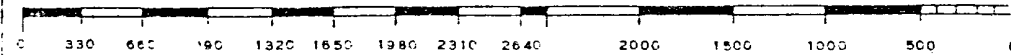
W. A. Walther, Jr.
Name
W. A. Walther, Jr.
Position
Operations Manager
Company
Atlantic Richfield Company
Date
September 6, 1978

I hereby certify that the well location shown on this plat was plotted from field notes of actual surveys made by me or under my supervision, and that the same is true and correct to the best of my knowledge and belief.



Date Surveyed
17 August 1978
Registered Professional Engineer
and Land Surveyor
James P. Leese
James P. Leese

Certificate No. 1463



DRILLING PLAN

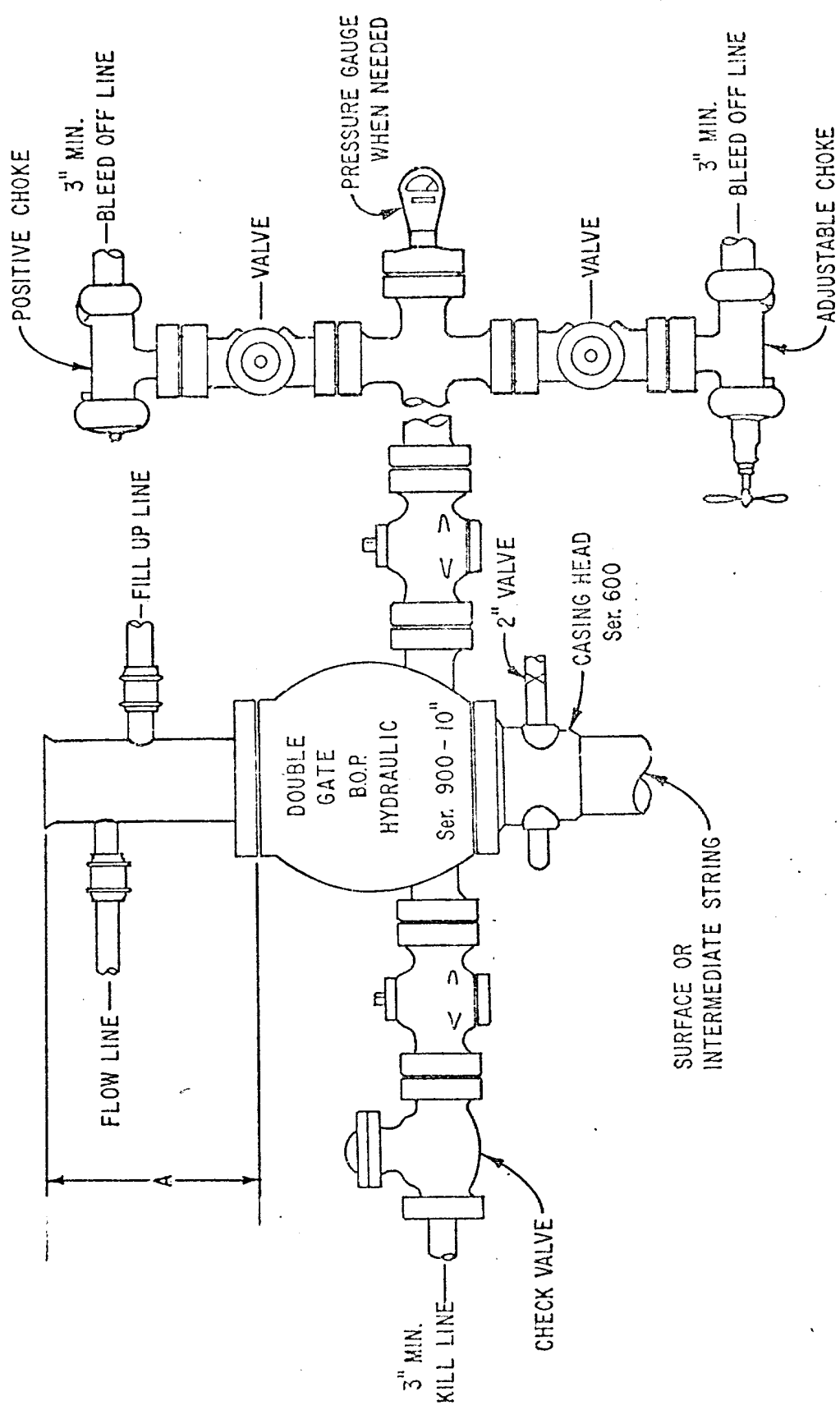
Hammond WN Well Number 7-A
NE SE Section 35-27N-8W
San Juan County, New Mexico

1. Surface Formation: Tertiary - Wasatch
2. Geologic Markers:

Pictured Cliffs	-	2400'
Chacra	-	3300'
Mesaverde - Cliff House	-	3980'
Menefee	-	4160'
Point Lookout	-	4660'
Upper Mancos	-	4850'
3. Anticipated Mineral Bearing Formations:

Chacra	-	3300' (Poss. Gas)
Mesaverde-Cliff House	-	3980' (Poss. Gas)
Menefee	-	4160' (Poss. Gas)
Point Lookout	-	4660' (Poss. Gas)
4. Casing Program: Surface - 250' 8-5/8" OD 24# K55 ST&C New
Production -
Surf. - T.D. 4 1/2" OD 10.5# K55 ST&C New
5. Control Equipment: Blowout Preventer - Ram Type, hydraulic operated
Rams - Two: One blind ram and one pipe ram.
Series - 900 (3000# WP, 6000#T)
Manufacturer - Cameron or Shaffer
Pressure test @ 1000 psi prior to drilling out of casing string.
Operational checks to be made daily and on trips.
Rotating Head - Type 50 Shaffer or equivalent.
Sketch Attached.
6. Drilling Fluid: 0-250' Gel and lime to drill surface hole and set casing.
250'-3000' Water with chemicals to maintain hole.
3000'-T.D. Low solids non-dispersed with weight 9.0-9.1#,
vis. 38-45 sec., water loss 8cc or less. Increase viscosity for logging.
7. Auxiliary Equipment: Kelly cock.
Sub on floor with full opening valve for use in drill pipe when kelly is not in the string.
8. Testing, Logging, Coring: At this time no drill stem tests or cores are planned. Hole conditions or information obtained while drilling may alter these plans.

Logs: Open hole: IES-CNL-FDC/GR	2" & 5" - 100'
Cased hole: CBL w/VDL & GR w/CL	
9. Abnormal Pressures, Temperatures, Potential Hazards: There are no abnormal pressures, temperatures or potential hazards in the area. The maximum anticipated pressure is 1000 psi. Weight material will be maintained on location and BOP will be pressure tested and kept in good working condition.
10. Starting Date - Completion: We are currently utilizing one drilling rig to drill our wells in this area. Depending upon approval of our application for permit to drill and availability of equipment, drilling operations could be commenced approximately October 5, 1978 and the well could be completed about November 15, 1978.



SURFACE USE AND OPERATIONS PLAN

Hammond WN Federal Well Number 7A
NE SE Section 35-27N-8W
San Juan County, New Mexico

1. Existing Roads: A portion of the Gould Pass, New Mexico Quadrangle is attached with existing roads colored green. Main access to this area would be from Blanco, New Mexico. The access roads to this area will not require any improvement for the movement of drilling equipment.
2. Planned Access Road: The planned access road will leave the existing road in Section 35-27N-8W (SE/4) and will be approximately 1400' in length traveling north for approximately 600' and then looping back south for approximately 700' and will enter the drill site from the north. This planned access road will be approximately 30' in width, sufficient to handle drilling equipment. No grades are anticipated in excess of 8%. Grading will be kept to a minimum and very little alteration of the natural drainage of the area is expected. There will be no major cuts, fills, culverts, turnouts, gates or cattleguards. The area is a sandy type soil and no special surfacing material will be required.
3. Existing Wells: As shown on the attached map.
4. Existing and or Proposed Facilities: Each of the Atlantic Richfield Company wells shown on the attached map is equipped with a Production Unit which is located approximately 100-125' from the well and are connected to the well with a buried gas line. The gas gathering company connects at the production unit.

This well is proposed as a Mesaverde single completion. The anticipated facilities would be one production unit erected on a pad approximately 18' x 24' (incl. small drain pit). The unit will be erected on concrete piers and connected to the well head with buried gas line approximately 125' from the well. The drain pit will be fenced for the protection of livestock and wildlife.

The area not required for facilities or operation of the well, will be contoured as near as possible to the original contours and restored as directed by the Bureau of Land Management and the United States Geological Survey.

5. Water Supply: It is anticipated that it will be necessary to obtain water from the Pine River near La Boca, Colorado. The water will be trucked and no new roads (other than 2 above) will be required.
6. Construction Materials: None anticipated.
7. Waste Disposal: Cuttings and drilling fluids will be disposed of in the reserve pit. A trash or burn pit will be used to dispose of trash, garbage, etc. If the reserve pit is sufficiently dry when the well is completed, both the reserve pit and the trash pit will be filled upon completion of the well. If the reserve pit is not sufficiently dry it will be fenced for the protection of wildlife and livestock and filled as soon as conditions permit.

Any produced fluids will be disposed of in the reserve pit. Any oil accumulations on the reserve pit during drilling and completion will be skimmed off and disposed of immediately after the completion rig is moved off. Oil produced during completion will be held in a temporary tank for later disposition. Trash and debris cleanup will commence as soon as the completion rig moves out, and final cleanup and contouring will begin as soon as possible.

SURFACE USE AND OPERATIONS PLAN (CON'T)

8. Ancillary Facilities: None are proposed.
9. Well Site Layout: Per the attached sketch. The reserve pit will be approximately 125' x 50' and will be unlined.
10. Restoration of Surface: Upon completion of the well, the drill site will be cleaned, rat and mouse holes filled and the trash pit filled. If sufficiently dry, the reserve pit will be filled. If not, any oil accumulation will be removed and the pit fenced for protection of livestock and wildlife. Other than the area needed for operation and production facilities, the site will be contoured as near as possible to its original state. Gas line ditch will be backfilled and the access road graded for proper drainage and minimum surface damage. Reseeding, or any other restoration, will be as specified by the Bureau of Land Management and the United States Geological Survey. Any topsoil will be stockpiled for distribution over the disturbed area upon final grading and for reseeding.
11. Other Information: The area of this location slopes to the south and east. Reserve pit will be on east side of location. This location will require a 55' cut on the west side, a 9' cut on the north side and a 28' cut on the northwest corner. The surface is sand and clay and is very rough with large rock boulders. The nearest dwelling is approximately 5 miles southeast at the El Paso Largo Camp and the nearest town is Blanco, New Mexico approximately 19 miles to the northwest.

The lands involved are Federal lands in a gas field. There is sheep and cattle grazing in the area. To our knowledge there are no archaeological, historical or cultural sites in the area. However, an archaeological survey report will be submitted as soon as it is received.

With the short period of operations and the restoration of the surface, any disturbance to vegetation and wildlife will be temporary and minimal. It is not anticipated that there will be any substantial impact on the environment.

12. Lessee's or Operator's Representative:

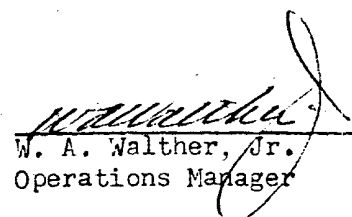
W. A. Walther, Jr.
Atlantic Richfield Company
1860 Lincoln Street, Suite 501
Denver, Colorado 80295
Phone: (303) 573-4049
(303) 798-5729

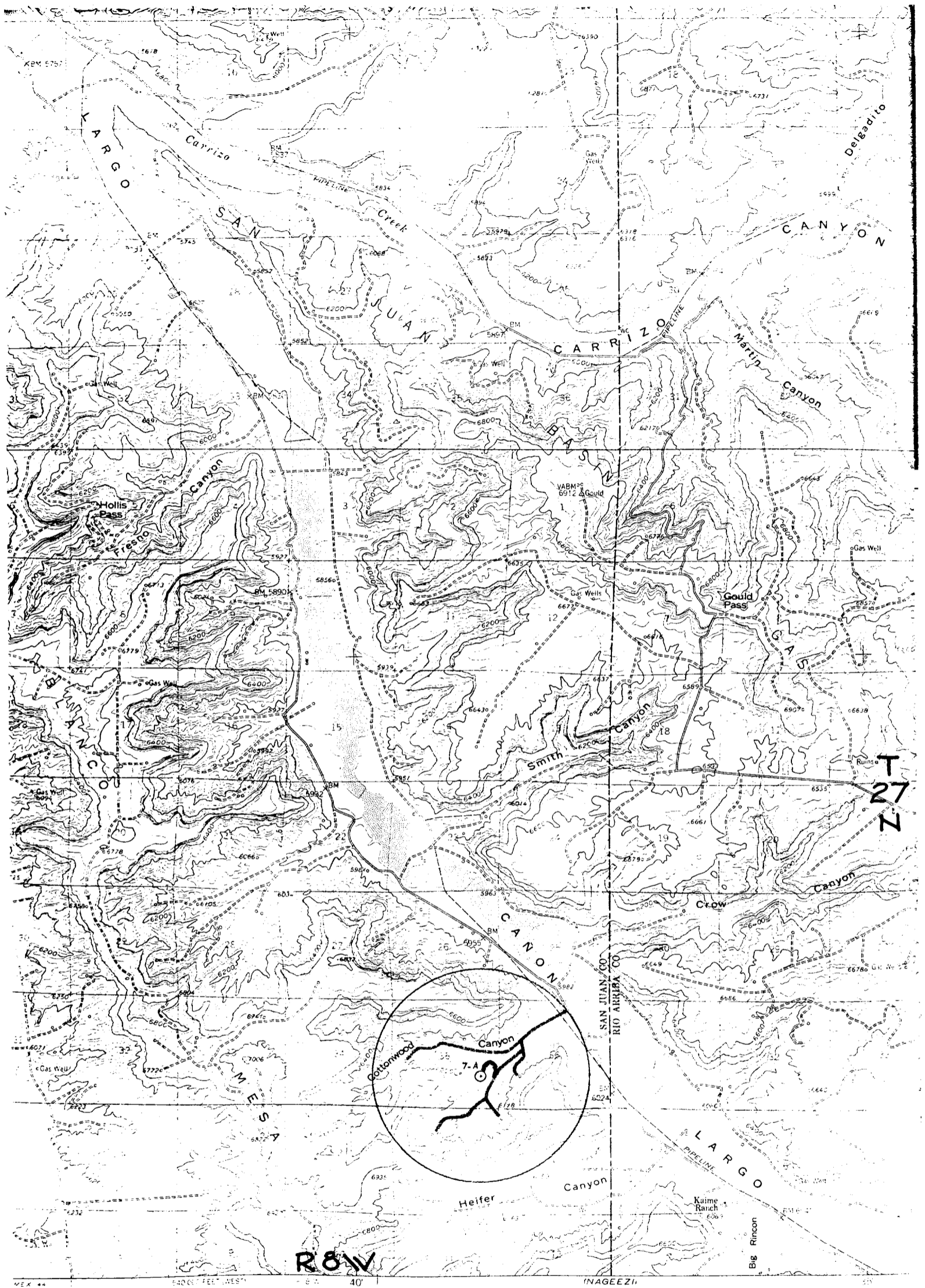
B. J. Sartain
Atlantic Richfield Company
1860 Lincoln Street, Suite 501
Denver, Colorado 80295
Phone: (303) 573-4053
(303) 770-7849

Local Representative: J. E. Taylor
Atlantic Richfield Company
P. O. Box 2197
Farmington, New Mexico 87401
Phone: (505) 325-7527
(505) 325-7968

13. Certification: I hereby certify that I, or persons under my direct supervision, have inspected the proposed drill site and access route; that I am familiar with the conditions which presently exist; that the statements made in this plan are, to the best of my knowledge, true and correct; and that the work associated with the operations proposed herein will be performed by Atlantic Richfield Company and its contractors and subcontractors in conformity with this plan and the terms and conditions under which it is approved.

Septmeber 7, 1978
Date

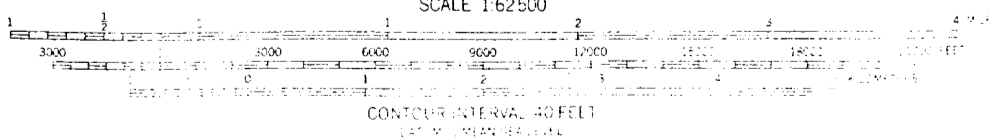

W. A. Walther, Jr.
Operations Manager



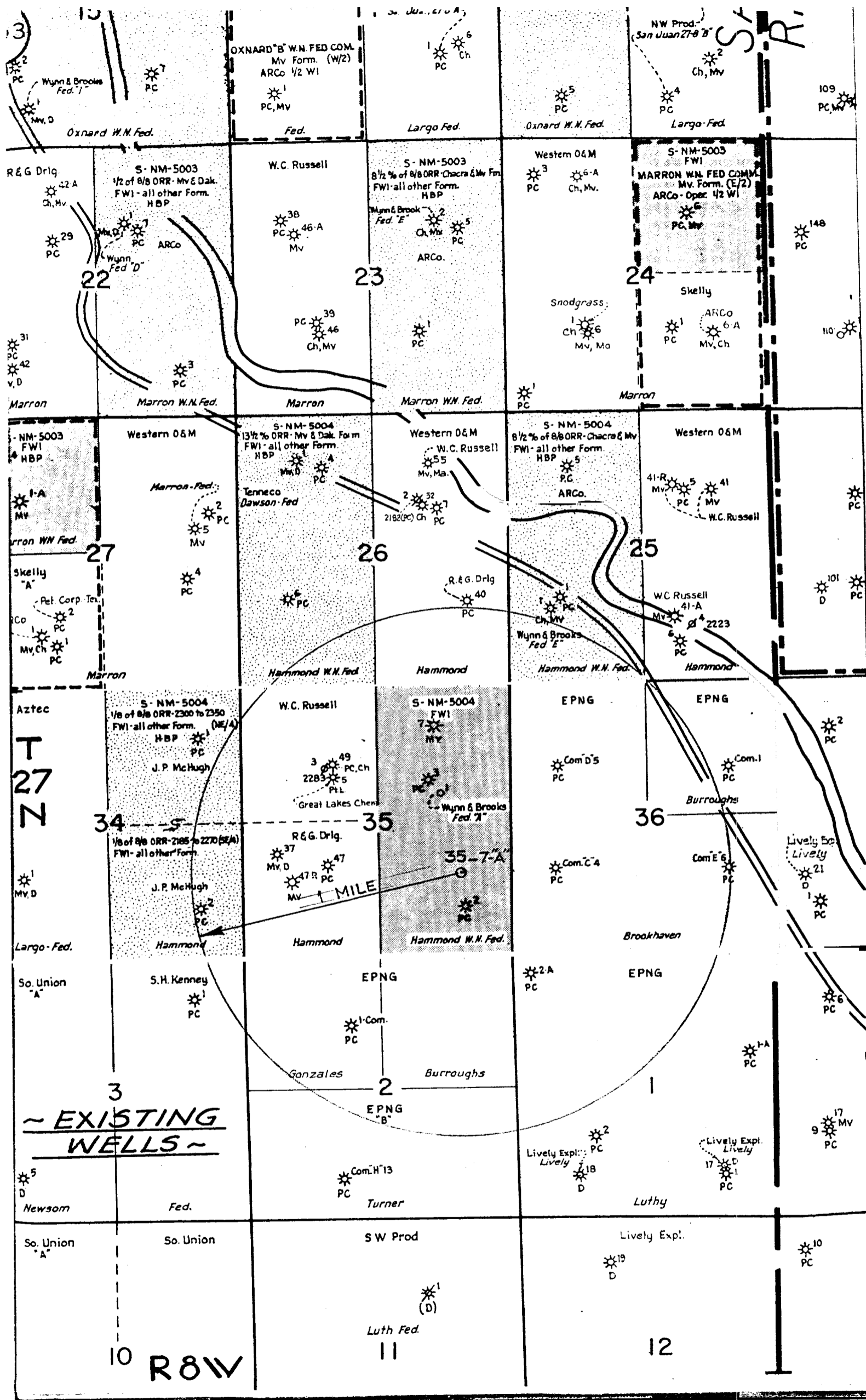
U.S. Geological Survey

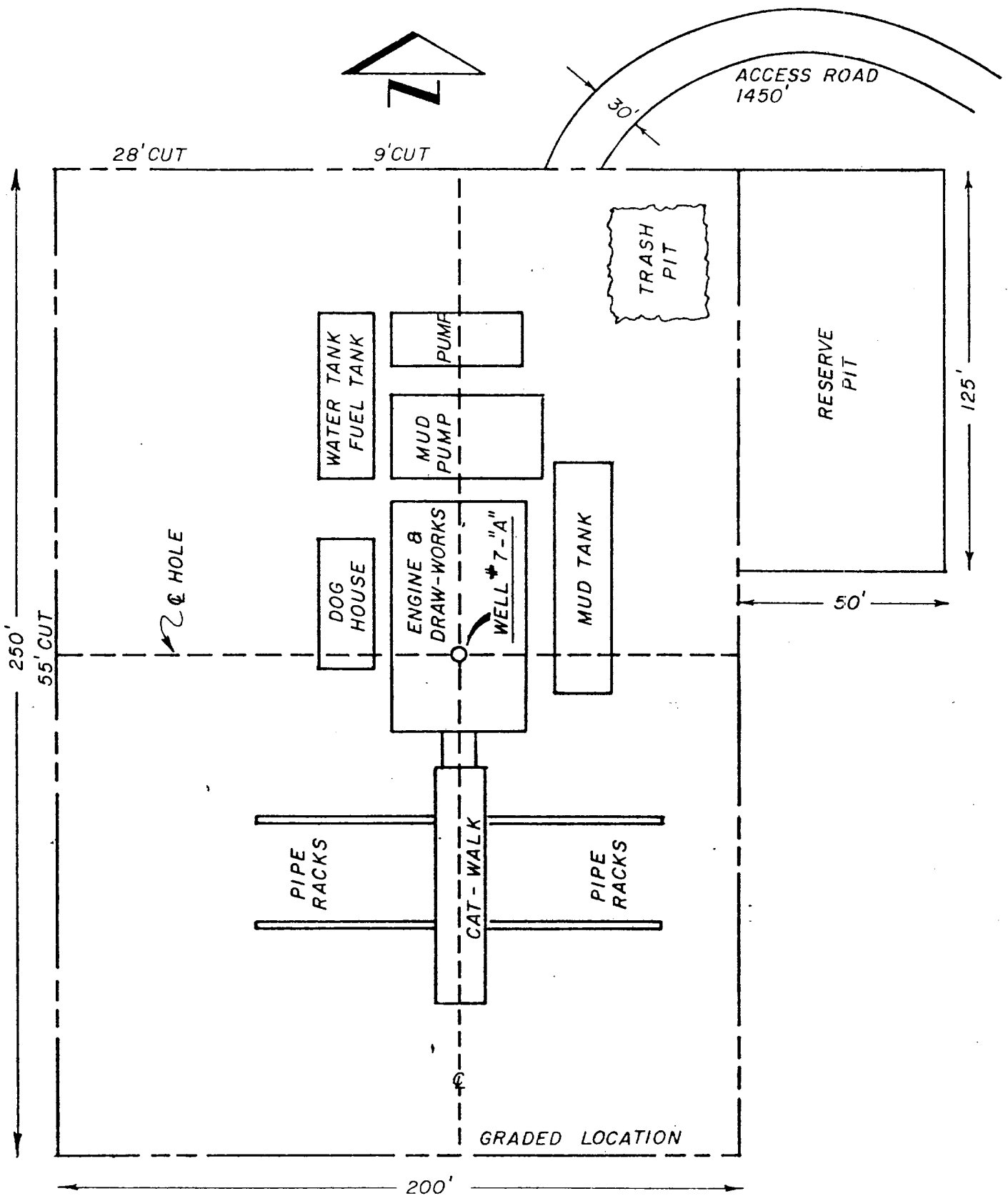
Map from aerial
photography
datum
coordinate system.
grid ticks.

1911 NORTH
MAGNETIC NORTH
APPROXIMATE MEAN
DECLINATION, 1959

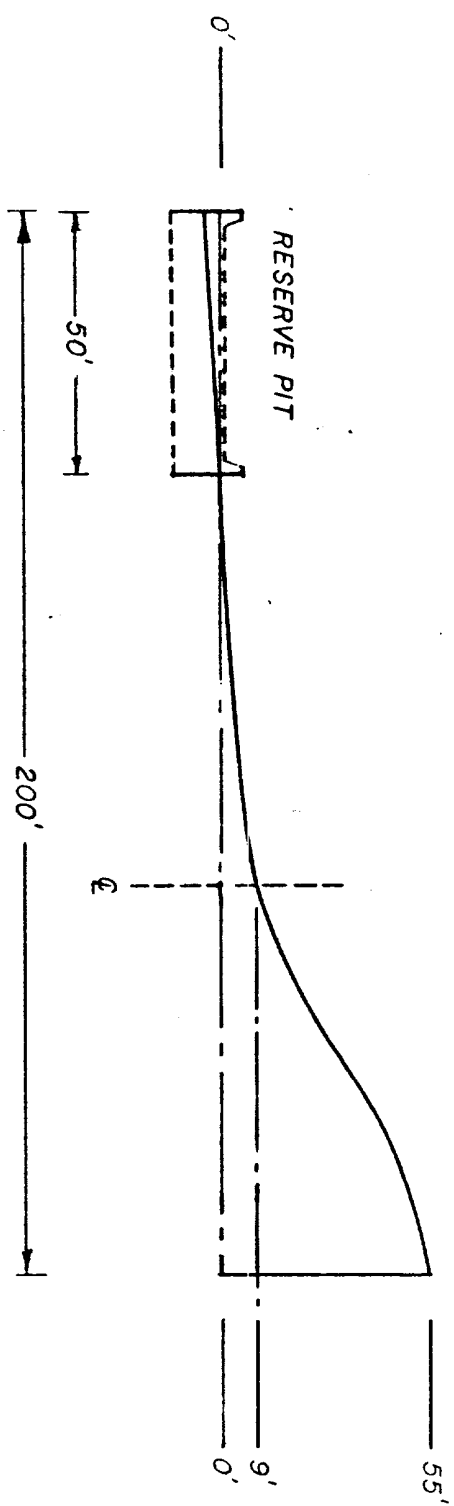


FOR SALE BY U.S. GEOLOGICAL SURVEY, DENVER 25, COLORADO OR WASHINGTON 25, D.C.
A FOLDER DESCRIBING TOPOGRAPHIC MAPS AND SYMBOLS IS AVAILABLE ON REQUEST

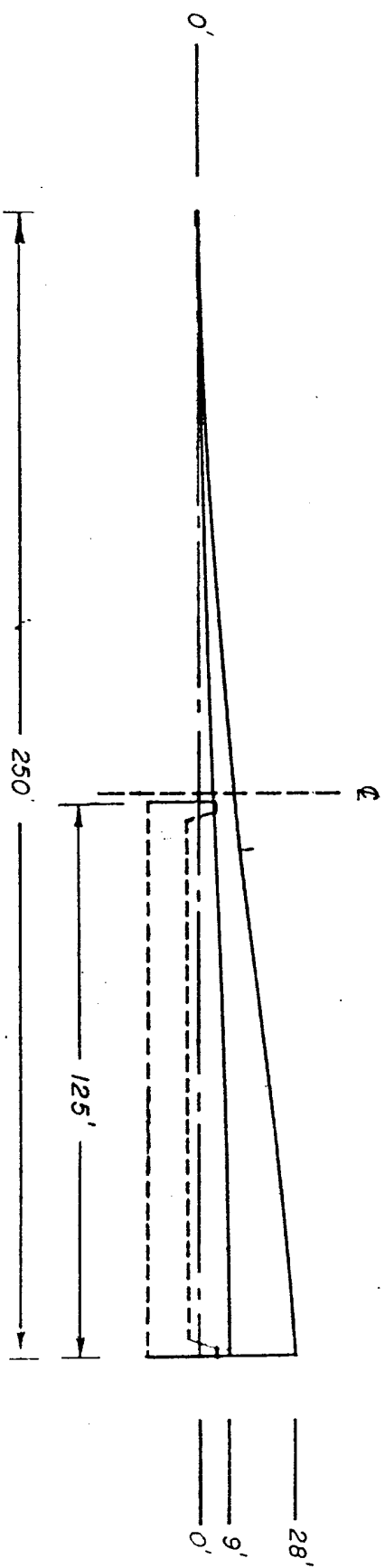




HAMMOND WN FEDERAL NO. 7-"A"
 1650' FSL , 990' FEL, Sec. 35 - T 27N - R 8W



EAST TO WEST



SOUTH TO NORTH

HAMMOND WN FEDERAL NO. 7-"A"