

UNITED STATES
DEPARTMENT OF THE INTERIOR
GEOLOGICAL SURVEY

30-045-23269

APPLICATION FOR PERMIT TO DRILL, DEEPEN, OR PLUG BACK

1a. TYPE OF WORK
 DRILL DEEPEN PLUG BACK

b. TYPE OF WELL
 OIL WELL GAS WELL OTHER
 SINGLE ZONE MULTIPLE ZONE

2. NAME OF OPERATOR
 TENNECO OIL COMPANY

3. ADDRESS OF OPERATOR
 720 SOUTH COLORADO BLVD, DENVER, CO 80222

4. LOCATION OF WELL (Report location clearly and in accordance with any State requirements.)*
 At surface 1020' FNL and 1510' FEL
 At proposed prod. zone

14. DISTANCE IN MILES AND DIRECTION FROM NEAREST TOWN OR POST OFFICE*
 See point 1b Surface Use Plan

15. DISTANCE FROM PROPOSED* LOCATION TO NEAREST PROPERTY OR LEASE LINE, FT. (Also to nearest drlg. unit line, if any)

18. DISTANCE FROM PROPOSED LOCATION* TO NEAREST WELL, DRILLING, COMPLETED, OR APPLIED FOR, ON THIS LEASE, FT.

21. ELEVATIONS (Show whether DF, RT, GR, etc.)
 5961' G.L.

23. PROPOSED CASING AND CEMENTING PROGRAM

SIZE OF HOLE	SIZE OF CASING	WEIGHT PER FOOT	SETTING DEPTH
13-3/4"	9-5/8"	36#	+ 250
7-7/8"	4-1/2"	10.5#	6680

The geologic name of the surface formation is Tertiary San Jose.

3. Estimated Formation Tops

Fruitland	+ 1920'	Mancos	+ 4530'
Pictured Cliffs	+ 2200'	Gallup	+ 5580'
Lewis Shale		Greenhorn	+ 6330'
Mesaverde -		Graneros	+ 6390'
Cliffhouse	+ 3830'	Dakota A	+ 6430'
Menefee	+ 3900'	T.D.	+ 6680' possible oil/gas producer
Point Lookout	+ 4400'		

Run 9-5/8" OD, K-55 new casing to 250' and circulate cement to surface. Run 4 1/2" OD, K-55 new casing to + 6680' with cement in two stages. Place DV tool (+ 4600') and cement with sufficient volume to circulate to surface. Tail in first stage with 200 SX neat. Casinghead will be API approved type (10").

Blowout Preventors: Hydraulic, Double ram, 10". One set of rams will be provided for each size drill pipe in the hole. One set of blind rams at all times. Fill line will be 2", kill line will be 2", choke relief line will be 2" with variable choke. BOP's will be installed, tested and in working order before drilling below surface casing and shall be maintained ready for use until drilling operations are completed. BOP's, drills, and tests will be recorded in the IADC Drilling report. They shall be checked every 24 hours. All rig equipment will be tested to above BOE ratings.

0-250' spud mud with sufficient viscosity to clean hole and run casing. 250'-T.D. low solids weight 8.9 - F.V. 30/36 - water loss 10/15. Quantities will vary as conditions vary.

- Auxiliary Equipment
- Kelly cock will be in use at all times.
 - Stabbing valve to fit drill pipe will be present on floor at all times.
 - Mud monitoring will be visual, no abnormal pressures are anticipated in this area.
 - Floats at bits.
 - Drill string safety valve(s) to fit all pipe in the drill string will be maintained on the rig floor while drilling operations are in progress.
 - Rotating head will be used while drilling with gas.

No cores will be taken. GR-FDC-CNL-Caliper-T.D. to base of Mesa Verde. GR-Induction SP=SN T.D. to surface casing.

No abnormal pressures or temperatures are anticipated. See point #5 for blowout prevention equipment.

The drilling of this well will take approximately ten days. The gas is not yet contracted.

IN ABOVE SPACE DESCRIBE PROPOSED PROGRAM: If proposal is to deepen or plug back, give data on present productive zone and proposed new productive zone. If proposal is to drill or deepen directionally, give pertinent data on subsurface locations and measured and true vertical depths. Give blowout preventer program, if any.

24. SIGNED Al M. Jones TITLE Div. Production Manager DATE 11-10-78

(This space for Federal or State office use)

PERMIT NO. _____ APPROVAL DATE _____

5. LEASE DESIGNATION AND SERIAL NO.
 USA SF-08112

6. IF INDIAN, ALLOTTEE OR TRIBE NAME

7. UNIT AGREEMENT NAME

8. FARM OR LEASE NAME
 GOOCH

9. WELL NO.
 1

10. FIELD AND POOL OR WILDCAT -
 DAKOTA

11. SEC., T., R., M., OR BLK. AND SURVEY OR AREA
 Sec. 20, T28N, R8W

12. COUNTY OR PARISH | 13. STATE
 SAN JUAN | NEW MEXICO

16. NO. OF ACRES IN LEASE

17. NO. OF ACRES ASSIGNED TO THIS WELL
 320

20. ROTARY OR CABLE TOOLS
 Rotary

22. APPROX. DATE WORK WILL START*
 December 1978

RECEIVED
 NOV 13 1978

ok [Signature]

NEW MEXICO OIL CONSERVATION COMMISSION
WELL LOCATION AND ACREAGE DEDICATION PLAT

Form C-102
Supersedes C-128
Effective 1-1-65

All distances must be from the outer boundaries of the Section.

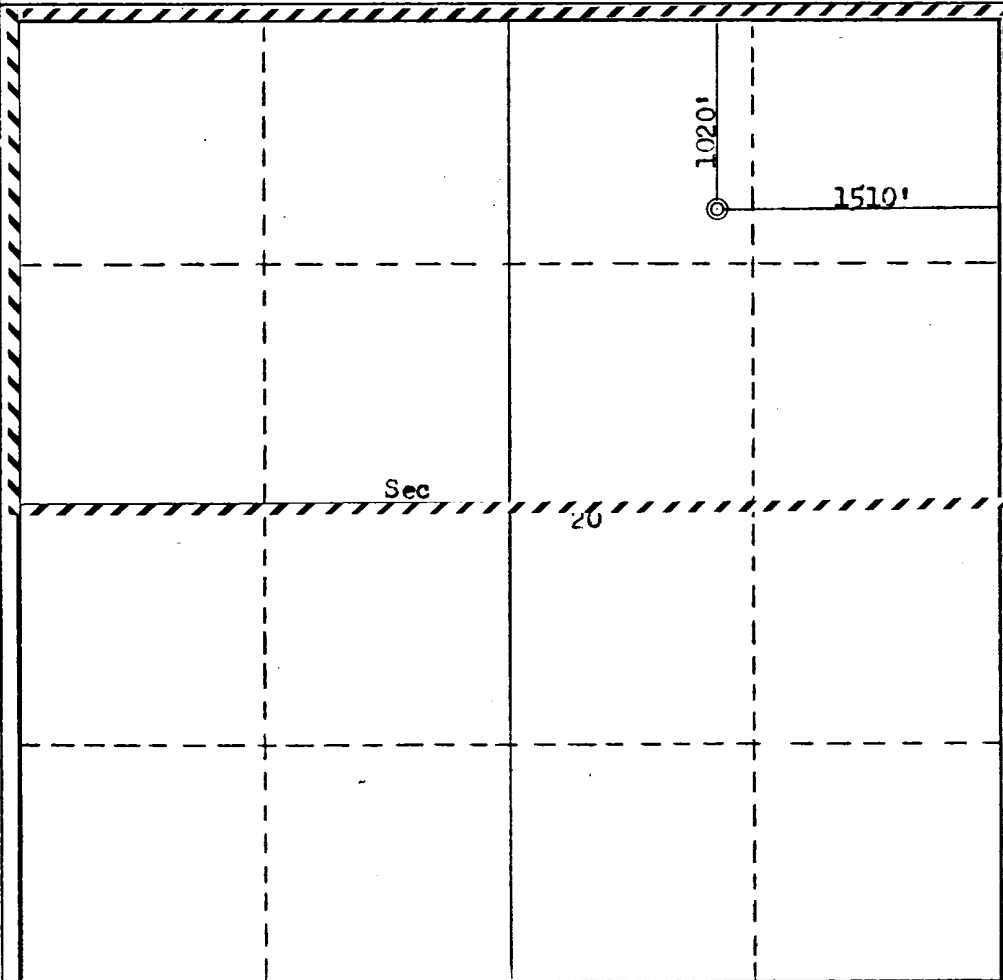
Operator TENNECO OIL COMPANY			Lease GOOCH		Well No. 1
Unit Letter B	Section 20	Township 28N	Range 8W	County San Juan	
Actual Footage Location of Well: 1020 feet from the North line and 1510 feet from the East line					
Ground Level Elev. 5961	Producing Formation Dakota		Pool Basin Dakota	Dedicated Acreage: 320 Acres	

1. Outline the acreage dedicated to the subject well by colored pencil or hachure marks on the plat below.
2. If more than one lease is dedicated to the well, outline each and identify the ownership thereof (both as to working interest and royalty).
3. If more than one lease of different ownership is dedicated to the well, have the interests of all owners been consolidated by communitization, unitization, force-pooling, etc.?

Yes No If answer is "yes," type of consolidation _____

If answer is "no," list the owners and tract descriptions which have actually been consolidated. (Use reverse side of this form if necessary.) _____

No allowable will be assigned to the well until all interests have been consolidated (by communitization, unitization, forced-pooling, or otherwise) or until a non-standard unit, eliminating such interests, has been approved by the Commission.



CERTIFICATION

I hereby certify that the information contained herein is true and complete to the best of my knowledge and belief.

Name *J. D. Rush*
Position **Environmental Coordinator**
Company **Tenneco Oil Company**
Date **November 10, 1978**

I hereby certify that the well location shown on this plat was plotted from field notes of actual surveys made by me or under my supervision, and that the same is true and correct to the best of my knowledge and belief.

Date Surveyed **October 17, 1978**
Registered Professional Engineer and of Land Surveyor
Fred B. Kern, Jr.
Certificate No. **ERR. 3950**

