

UNITED STATES
DEPARTMENT OF THE INTERIOR
GEOLOGICAL SURVEY

APPLICATION FOR PERMIT TO DRILL, DEEPEN, OR PLUG BACK

1a. TYPE OF WORK
 DRILL ☒ DEEPEN ☐ PLUG BACK ☐

b. TYPE OF WELL
 OIL WELL ☐ GAS WELL ☒ OTHER ☐ SINGLE ZONE ☒ MULTIPLE ZONE ☐

2. NAME OF OPERATOR
 Dome Petroleum Corp.

3. ADDRESS OF OPERATOR
 501 Airport Drive, Suite 107, Farmington, NM

4. LOCATION OF WELL (Report location clearly and in accordance with any State requirements.)*
 At surface 1460' FNL & 870' FWL
 E At proposed prod. zone

14. DISTANCE IN MILES AND DIRECTION FROM NEAREST TOWN OR POST OFFICE*
 20 miles south of Farmington, NM

15. DISTANCE FROM PROPOSED* LOCATION TO NEAREST PROPERTY OR LEASE LINE, FT. 1770'
 (Also to nearest drlg. unit line, if any)

18. DISTANCE FROM PROPOSED LOCATION* TO NEAREST WELL, DRILLING, COMPLETED, OR APPLIED FOR, ON THIS LEASE, FT.

21. ELEVATIONS (Show whether DF, RT, GR, etc.)
 6038 GR

23. PROPOSED CASING AND CEMENTING PROGRAM

SIZE OF HOLE	SIZE OF CASING	WEIGHT PER FOOT	SETTING DEPTH	QUANTITY OF CEMENT
7 7/8"	5 1/2"	15.50#	40	35 sacks
4 3/4"	2 7/8"	6.50#	1500	150 sacks

Dome Petroleum Corp. proposes to drill a cretaceous test to 1500' completion will be determined from logs. A 6" 900 series blowout preventer will be used. The BOP will be tested to 500 psi before drilling surface plug. The geologic name of the surface formation is Ojo Alamo. No abnormal temperatures or pressures are anticipated. Drilling should require approximately 4 days.

gas not dedicated

RECEIVED
MAR 1 - 1979

RECEIVED
MAR 5 1979
OIL CON. COM.
DIST. 3

IN ABOVE SPACE DESCRIBE PROPOSED PROGRAM: If proposal is to deepen or plug back, give data on present productive zone and proposed new productive zone. If proposal is to drill or deepen directionally, give pertinent data on subsurface locations and measured and true vertical depths. Give blowout preventer program, if any.

24. SIGNED H. D. Hollingsworth TITLE Drilling Foreman DATE 2-26-79
 (This space for Federal or State office use)

PERMIT NO. _____ APPROVAL DATE _____

APPROVED BY _____ TITLE _____ DATE _____

CONDITIONS OF APPROVAL, IF ANY:

ok Frank

777 MCC

**NEW MEXICO OIL CONSERVATION COMMISSION
WELL LOCATION AND ACREAGE DEDICATION PLAT**

Form C-102
Supersedes C-128
Effective 1-4-65

All distances must be from the outer boundaries of the Section.

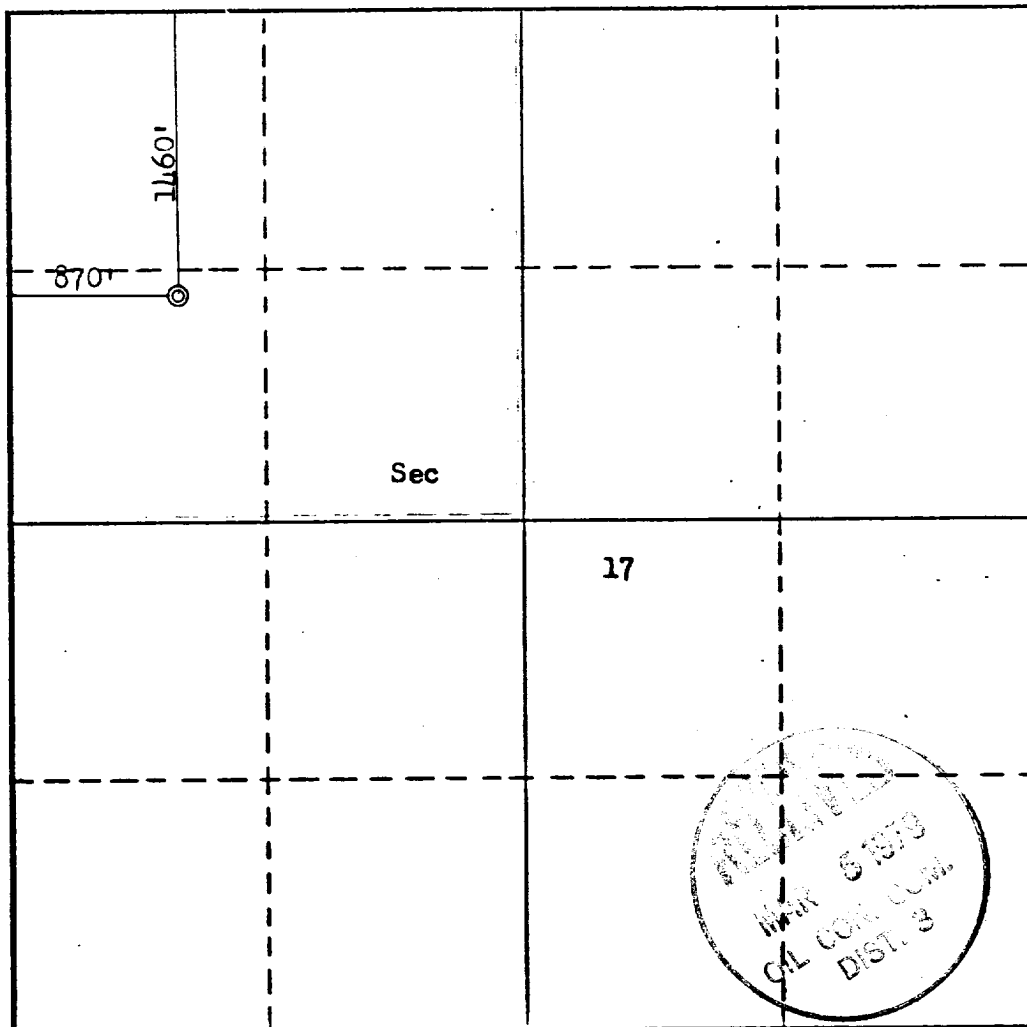
Operator DOMO PETROLEUM CORPORATION			Lease DOMO-FEDERAL 17-27-13		Well No. 1
Unit Letter E	Section 17	Township 27N	Range 13W	County SAN JUAN	
Actual Footage Location of Well: 1460 feet from the North line and 870 feet from the West line					
Ground Level Elev. 6038	Producing Formation Pictured Cliff	Pool Fract. Waw. Pictured Cliff	Dedicated Acreage: 160 Acres		

1. Outline the acreage dedicated to the subject well by colored pencil or hachure marks on the plat below.
2. If more than one lease is dedicated to the well, outline each and identify the ownership thereof (both as to working interest and royalty).
3. If more than one lease of different ownership is dedicated to the well, have the interests of all owners been consolidated by communitization, unitization, force-pooling, etc?

☐ Yes ☐ No If answer is "yes," type of consolidation _____

If answer is "no," list the owners and tract descriptions which have actually been consolidated. (Use reverse side of this form if necessary.) _____

No allowable will be assigned to the well until all interests have been consolidated (by communitization, unitization, forced-pooling, or otherwise) or until a non-standard unit, eliminating such interests, has been approved by the Commission.



CERTIFICATION

I hereby certify that the information contained herein is true and complete to the best of my knowledge and belief.

Name
H. D. Hollingsworth

Position
Drilling Foreman

Company
Dome Petroleum Corp.

Date
2-26-79

I hereby certify that the well location shown on this plat was plotted from field notes of actual surveys made by me or under my supervision, and that the same is true and correct to the best of my knowledge and belief.

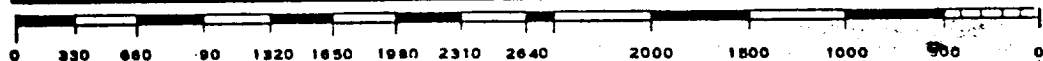
Date Surveyed
February 15, 1979

Registered Professional Engineer and/or Land Surveyor

Fred B. Kerr Jr.

Certificate No.

3950



DOME PETROLEUM CORP.
Suite 1500, Colorado State Bank Bldg.
1600 Broadway
Denver, Colorado 80202

DEVELOPMENT PLAN FOR SURFACE USE

Dome Federal 17-27-13 Well #1
1460' FNL & 870' FWL
Sec. 17, T27N, R13W
San Juan County, NM

1. Existing Roads

The main road to the location is that from Farmington toward Bisti, (Bisti Highway), leaving this road approximately 14 miles south of Farmington and using existing side roads to the location.

2. Planned Access Roads

The access road, to be routed as shown on the attached map, will be 18' wide with adequate ditch and water bars.

3. Existing wells

Existing wells within one mile of location are shown on the attached topographic map.

4. Location of Proposed Facilities

Development of commercial gas production will require separation facilities on the location pad. Equipment and pits will be fenced as required for protection of livestock and wildlife. Above ground facilities will be painted brown or grey to blend in with the surrounding area as specified by the BLM. The disturbed areas no longer needed for operations after well completion will be restored to natural contour and reseeded.

5. Location and Type of Water Supply

To be hauled from the San Juan River at Farmington, NM.

6. Source of Construction Materials

Not applicable.

7. Method of Handling Waste Material

All garbage and trash that can be burned shall be burned. All trash that cannot be burned will be contained in a trash pit and covered with a minimum of 24 inches of dirt. All drilling waste such as cuttings, overflows of oil, water, and drilling fluids will be contained in a reserve pit and buried with adequate cover upon completion of operations. The reserve pit will be fenced until clean up operations are commenced. Toilet facilities will be provided.

8. Ancillary Facilities

No camps or airstrips are proposed for this location.

9. Well Site Layout

See attached diagram.

10. Plans for Restoration of Surface

Cleanup of the location will commence immediately following the removal of the drilling equipment. The reserve pit will be fenced until restoration operations are commenced. The location will be returned to original contour if the well is not productive. Both the road and location will be reseeded in accordance with BLM specifications.

11. Other Information

Topography consists of rolling hills with very sandy soil. Vegetation is composed of Snake Weed, Mormon Tea, Yucca, Prickly Pear and Blue Gamma.

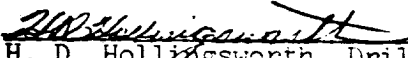
12. Leasee's or Operations Representative

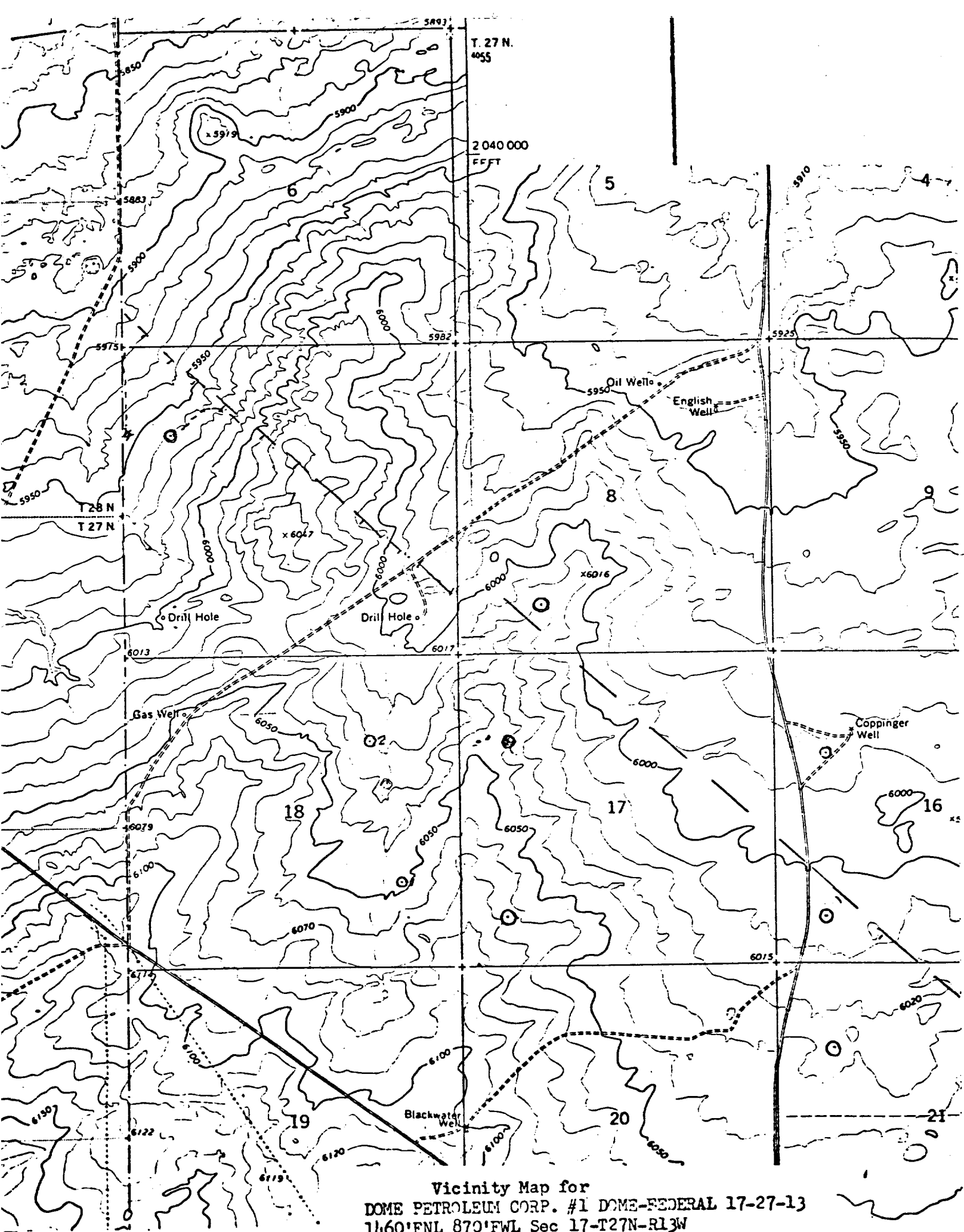
Dome Petroleum Corp.
H. D. Hollingsworth
501 Airport Drive, Suite 107
Farmington, NM 87401
Phone: 505/325-2897 Office
505/327-1548 Home

13. Certification

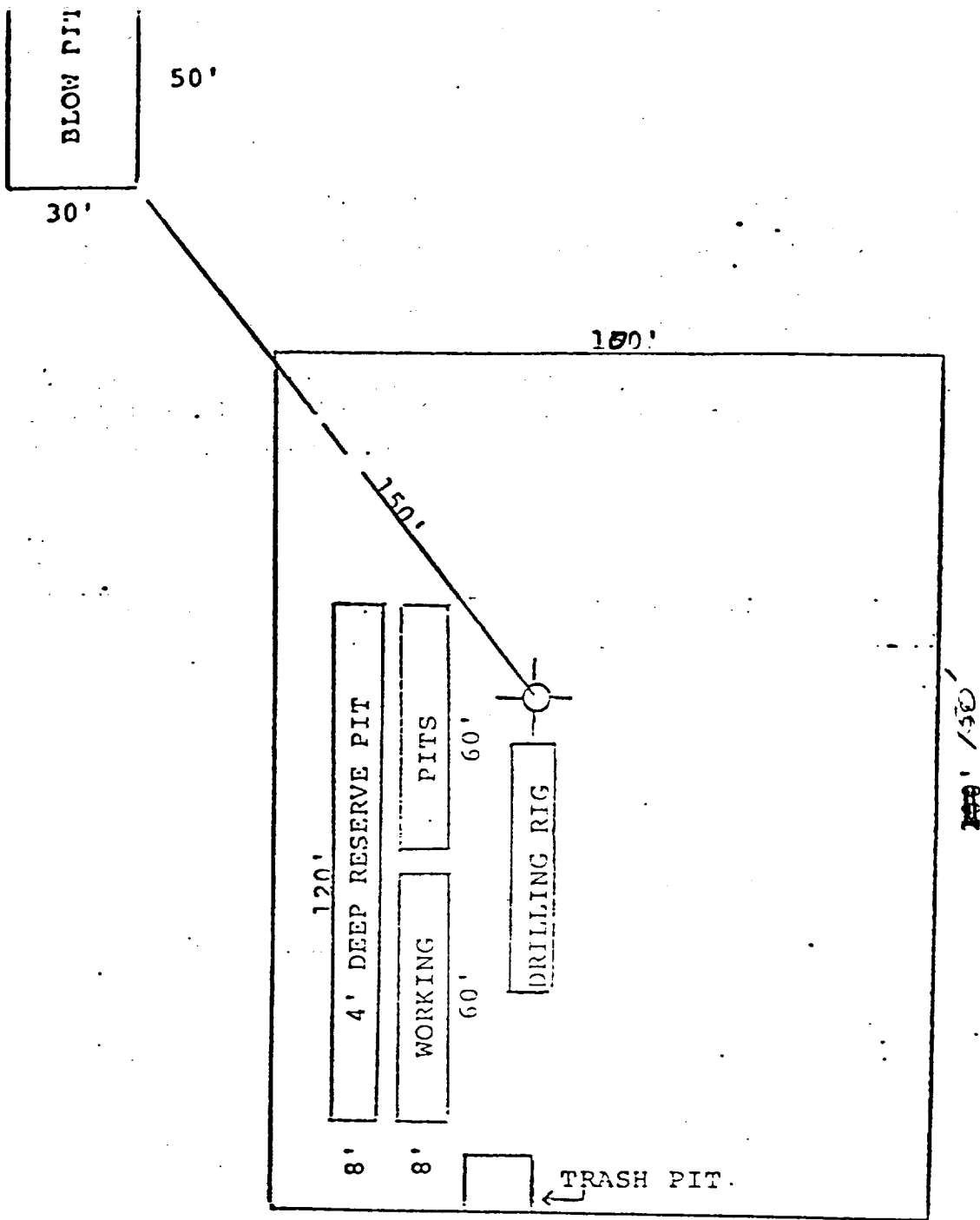
I hereby certify that I or persons under my direct supervision have inspected the proposed drill site and access route; that I am familiar with the conditions which presently exist; that the statements in the plan are, to the best of my knowledge, true and correct; and that the work associated with the operations proposed herein will be performed by Dome Petroleum Corp. and its contractors and sub-contractors in conformity with this plan and the terms and conditions under which it is approved.

February 26, 1979


H. D. Hollingsworth, Drilling Foreman
Dome Petroleum Corp.



Vicinity Map for
 DOME PETROLEUM CORP. #1 DOME-FEDERAL 17-27-13
 1460'FNL 870'FWL Sec 17-T27N-R13W
 SAN JUAN COUNTY, NEW MEXICO



· DOME PETROLEUM CORP.

SUITE 1500, COLORADO STATE BANK BLDG.

1600 BROADWAY

DENVER, COLORADO 80202

PROPOSED LOCATION
DIAGRAM

UNITED STATES
DEPARTMENT OF THE INTERIOR
GEOLOGICAL SURVEY

SUNDRY NOTICES AND REPORTS ON WELLS

(Do not use this form for proposals to drill or to deepen or plug back to a different reservoir. Use Form 9-331-C for such proposals.)

1. oil ☐ well gas ☒ well other

2. NAME OF OPERATOR

DOME PETROLEUM CORP.

3. ADDRESS OF OPERATOR 501 Airport Drive,
Suite 107, Farmington, New Mexico 87401

4. LOCATION OF WELL (REPORT LOCATION CLEARLY. See space 17 below.)

AT SURFACE: 1460' FNL, 870' FWL
AT TOP PROD. INTERVAL:
AT TOTAL DEPTH:

16. CHECK APPROPRIATE BOX TO INDICATE NATURE OF NOTICE, REPORT, OR OTHER DATA

REQUEST FOR APPROVAL TO:

SUBSEQUENT REPORT OF:

TEST WATER SHUT-OFF ☐FRACTURE TREAT ☐SHOOT OR ACIDIZE ☐REPAIR WELL ☐PULL OR ALTER CASING ☐MULTIPLE COMPLETE ☐CHANGE ZONES ☐ABANDON* ☐(other) SPUD & SET SURFACE

5. LEASE

NM 9787

6. IF INDIAN, ALLOTTEE OR TRIBE NAME

7. UNIT AGREEMENT NAME

8. FARM OR LEASE NAME

DOME FEDERAL 17-27-13

9. WELL NO.

1

10. FIELD OR WILDCAT NAME

WAW PICTURED CLIFF

11. SEC., T., R., M., OR BLK. AND SURVEY OR AREA

SEC. 17, T27N, R13W

12. COUNTY OR PARISH 13. STATE

SAN JUAN

NEW MEXICO

14. API NO.

15. ELEVATIONS (SHOW DF, KDB, AND WD)
6038 GR.

(NOTE: Report results of multiple completion or zone change on Form 9-330.)

17. DESCRIBE PROPOSED OR COMPLETED OPERATIONS (Clearly state all pertinent details, and give pertinent dates, including estimated date of starting any proposed work. If well is directionally drilled, give subsurface locations and measured and true vertical depths for all markers and zones pertinent to this work.)*

Spudded 8 3/4" hole at 9:00 AM, 04/28/79. Drilled to 44'. Ran 1 joint (41') 7", 20#, K-55, ST&C Casing. Casing landed at 41' GL. Cemented with 35 sacks class "B" cement with 2% CaCl. Plug down at 12:15 PM, 04/28/79. Circulated cement.

Subsurface Safety Valve: Manu. and Type _____

18. I hereby certify that the foregoing is true and correct

SIGNED

H. D. HOLLINGSWORTH

TITLE DRILLING FOREMAN

DATE

May 4, 1979

(This space for Federal or State office use)

APPROVED BY _____

TITLE _____

DATE _____

CONDITIONS OF APPROVAL, IF ANY:

*See Instructions on Reverse Side

NMOCC