

UNITED STATES  
DEPARTMENT OF THE INTERIOR  
GEOLOGICAL SURVEY

## APPLICATION FOR PERMIT TO DRILL, DEEPEN, OR PLUG BACK

## 1a. TYPE OF WORK

DRILL ☒DEEPEN ☐PLUG BACK ☐

## b. TYPE OF WELL

OIL  
WELL ☐GAS  
WELL ☒

OTHER

SINGLE  
ZONE ☐MULTIPLE  
ZONE ☐

## 2. NAME OF OPERATOR

Consolidated Oil &amp; Gas, Inc.

## 3. ADDRESS OF OPERATOR

1860 Lincoln Street, Suite 1300, Denver, Colorado 80295

4. LOCATION OF WELL (Report location clearly and in accordance with any State requirements.)\*  
At surface 900' FNL and 925' FWT.

At proposed prod. zone Same

## 14. DISTANCE IN MILES AND DIRECTION FROM NEAREST TOWN OR POST OFFICE\*

18.7 miles S.E. of Bloomfield, New Mexico

## 15. DISTANCE FROM PROPOSED\*

LOCATION TO NEAREST  
PROPERTY OR LEASE LINE, FT.  
(Also to nearest drlg. unit line, if any)

790'

## 16. NO. OF ACRES IN LEASE

320

## 18. DISTANCE FROM PROPOSED LOCATION\*

TO NEAREST WELL, DRILLING, COMPLETED,  
OR APPLIED FOR, ON THIS LEASE, FT.

3560'

## 19. PROPOSED DEPTH

4650'

17. NO. OF ACRES ASSIGNED  
TO THIS WELL

160 322.40

## 20. ROTARY OR CABLE TOOLS

Rotary

## 21. ELEVATIONS (Show whether DF, RT, GR, etc.)

GR 6033'

## 22. APPROX. DATE WORK WILL START\*

April 1, 1979

## 23.

## PROPOSED CASING AND CEMENTING PROGRAM

SIZE OF HOLE	SIZE OF CASING	WEIGHT PER FOOT	SETTING DEPTH	QUANTITY OF CEMENT
12-1/4"	8-5/8"	26.0#	250'	200 sx
7-7/8"	4-1/2"	10.5#	4650'	300 sx

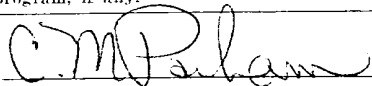
1. Drill 12-1/4" hole to  $\pm$  250'. Set 8-5/8" casing. Circulate cement to surface.
2. WOC 12 hours.
3. Install blowout preventers. Pressure test surface casing and blowout preventers to 1000 psig.
4. Drill 7-7/8" hole to 4650' w/fresh water gel mud. Log.
5. Run 4-1/2" casing and cement same w/300 sx.
6. Selectively perforate and stimulate the Mesaverde and complete as required by appropriate rules and regulations.

The W/2 of Section 31 is dedicated to this well and this acreage is committed to a gas sales contract.

IN ABOVE SPACE DESCRIBE PROPOSED PROGRAM: If proposal is to deepen or plug back, give data on present productive zone and proposed new productive zone. If proposal is to drill or deepen directionally, give pertinent data on subsurface locations and measured and true vertical depths. Give blowout preventer program, if any.

## 24.

SIGNED



TITLE

Sr. Production Engineer

DATE

3-9-79

(This space for Federal or State office use)

PERMIT NO.

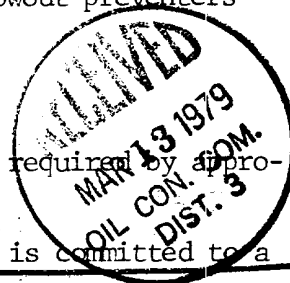
APPROVAL DATE

APPROVED BY

TITLE

DATE

CONDITIONS OF APPROVAL, IF ANY:



**NEW MEXICO OIL CONSERVATION COMMISSION  
WELL LOCATION AND ACREAGE DEDICATION PLAT**

Form C-102  
Supersedes C-128  
Effective 1-1-55

All distances must be from the outer boundaries of the Section.

Operator <b>CONSOLIDATED OIL AND GAS, INC.</b>			Lease <b>LINDA</b>		Well No. <b>1 A</b>
Unit Letter <b>D</b>	Section <b>31</b>	Township <b>27 NORTH</b>	Range <b>8 WEST</b>	County <b>SAN JUAN</b>	
Actual Footage Location of Well: <div style="display: flex; justify-content: space-between;"> <span>900 feet from the <b>NORTH</b> line and</span> <span>925 feet from the <b>WEST</b> line</span> </div>					
Ground Level Elev. <b>6033</b>	Producing Formation <b>Mesaverde</b>	Pool <b>Blanco Mesaverde</b>		Dedicated Acreage: <b>322.40</b> <del>160</del> Acres	

1. Outline the acreage dedicated to the subject well by colored pencil or hachure marks on the plat below.
2. If more than one lease is dedicated to the well, outline each and identify the ownership thereof (both as to working interest and royalty).
3. If more than one lease of different ownership is dedicated to the well, have the interests of all owners been consolidated by communitization, unitization, force-pooling, etc?

☐ Yes    ☐ No    If answer is "yes," type of consolidation \_\_\_\_\_

If answer is "no," list the owners and tract descriptions which have actually been consolidated. (Use reverse side of this form if necessary.) \_\_\_\_\_

No allowable will be assigned to the well until all interests have been consolidated (by communitization, unitization, forced-pooling, or otherwise) or until a non-standard unit, eliminating such interests, has been approved by the Commission.

**CERTIFICATION**

I hereby certify that the information contained herein is true and complete to the best of my knowledge and belief.

*C. M. Parham*

Name

**C. M. Parham**

Position

**Sr. Production Engineer**

Company

**Consolidated Oil & Gas, Inc.**

Date

**3-9-79**

I hereby certify that the well location shown on this plat was plotted from field notes of actual surveys made by me or under my supervision, and that the same is true and correct to the best of my knowledge and belief.

Date Surveyed

**18 January 1979**

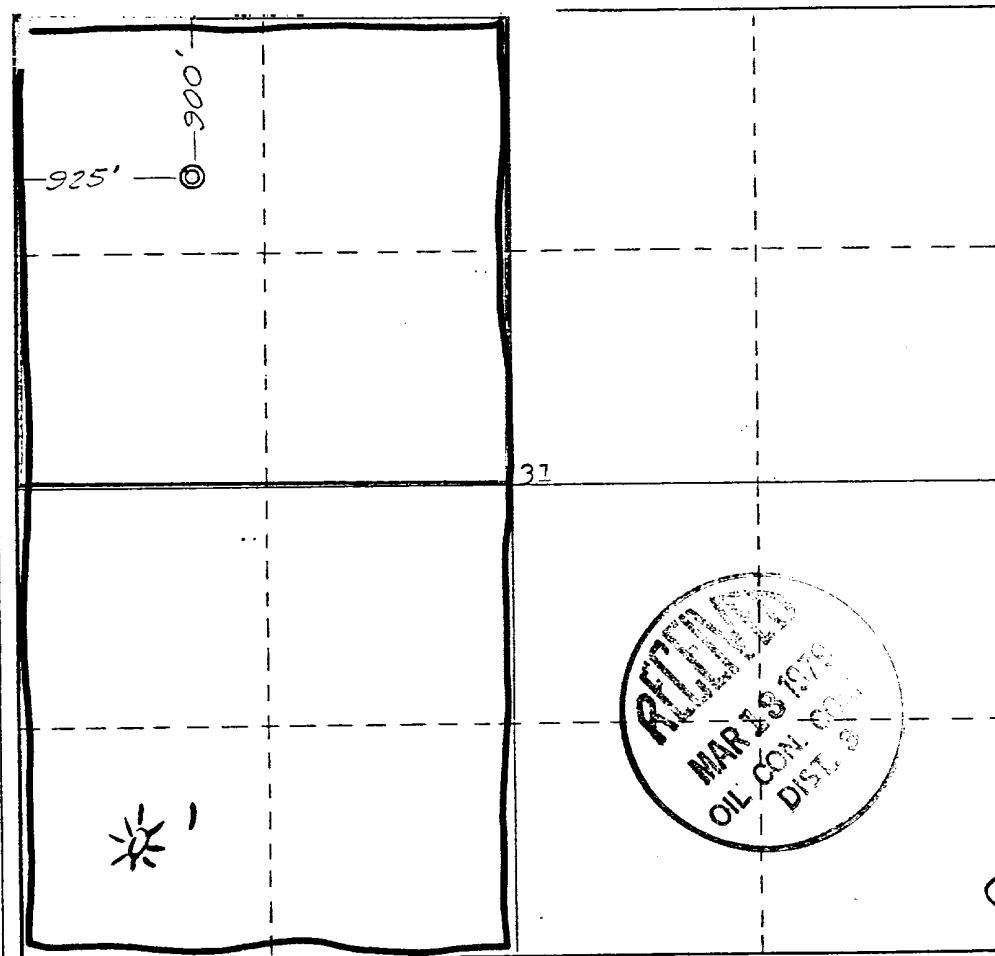
Registered Professional Engineer

and Land Surveyor

*James P. Leese*  
**James P. Leese**

Certificate No.

**1463**



330 660 90 1320 1650 1980 2310 2640 2000 1500 1000 500

DEVELOPMENT PLAN FOR SURFACE USE

Linda No. 1-A

Consolidated Oil & Gas, Inc. - Operator

Navajo Contract 1-49-Ind-8469  
NW NW Sec. 31, T27N, R8W, NMPM  
San Juan County, New Mexico

1. Existing Roads

See enclosed topographic map (Attachment "A") which shows existing improved and unimproved roads.

2. Planned Access Roads

See enclosed topographic map (Attachment "A"). The required new road will be approximately 50' long and 12' wide.

3. Location of Existing Wells

See enclosed lease map (Attachment "B").

4. Location of Existing and/or Proposed Facilities

See enclosed lease map (Attachment "B") showing location of wells and facilities operated by Consolidated Oil & Gas, Inc. If production is encountered, the tank battery and other required producing equipment will be located per attached completion plat (Attachment "C").

5. Location and Type of Water Supply

Water for drilling will be trucked from any of several water holes in the vicinity of the location.

6. Source of Construction Materials

No additional construction material will be required.

7. Methods of Handling Waste Disposal

All waste material will be contained by earthen and steel pits. Earthen pits will be subsequently backfilled and buried. A portable chemical toilet will be furnished for drilling personnel.

8. Ancillary Facilities

No separate drill campsites are proposed.

9. Wellsite Layout

The drilling site location will be graded and will approximate 200' x 250' with natural drainage to the East. Care will be taken while grading to control erosion.

10. Plans for Restoration of Surface

- A. Following drilling and completion operations, all equipment and material not needed for operations will be removed. Pits containing fluid will be fenced until filled with any additional pits filled and the location cleaned of all trash and junk.
- B. After abandonment, any special rehabilitation and/or revegetation requirements (reseed with seed mixture No. 2) will be complied with and accomplished as expeditiously as possible. All pits should be filled and leveled within 90 days after abandonment.

11. Other Information

The location is in a relatively flat area with only slight cuts on three sides required to facilitate the location. The sandy soil has only rabbit brush and native grasses for vegetation. No residences or structures are nearby. The surface rights are owned by the Navajo Indian Tribe. If during operations, any historic or prehistoric ruin, monument, or site or any object of antiquity is discovered, work will be suspended and the discovery reported to the regulatory agency. Due to snow cover, an archaeological survey has not been completed at this site, therefore as soon as weather permits the survey will be conducted and a copy of the final report will be forwarded.

12. Operator's Representative

Consolidated Oil & Gas, Inc.  
C. M. Parham, Senior Production Engineer  
1860 Lincoln Street, Suite 1300  
Denver, Colorado 80295  
Phone (303) 861-5252

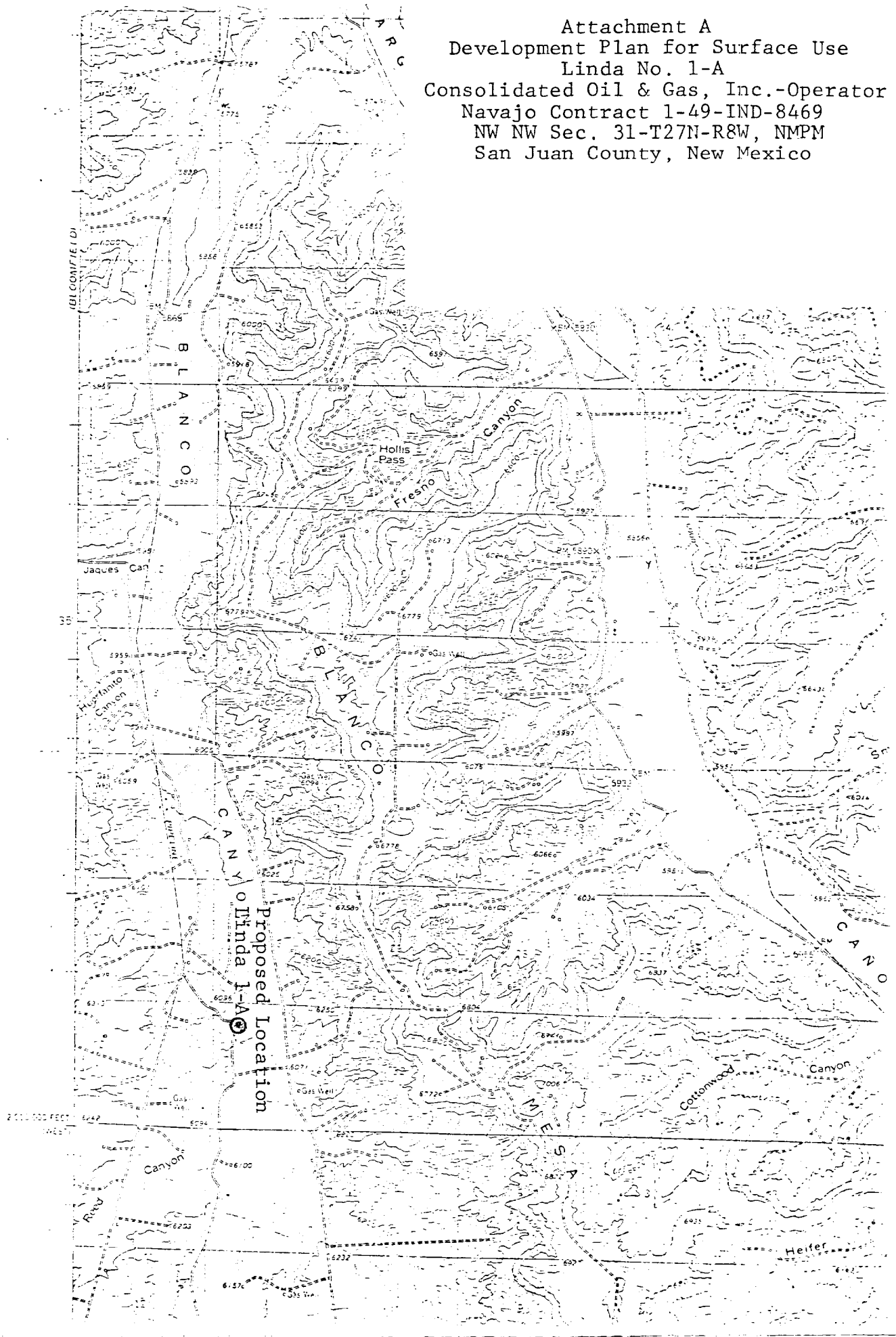
13. Certification

I hereby certify that I, or persons under my direct supervision, have inspected the proposed drillsite and access route; that I am familiar with the conditions which presently exist; that the statements made in this plan are, to the best of my knowledge, true and correct; and that the work associated with the operations proposed herein will be performed by Consolidated Oil & Gas, Inc. and its contractors and subcontractors in conformity with this plan and the terms and conditions under which it is approved.

3-9-79  
Date

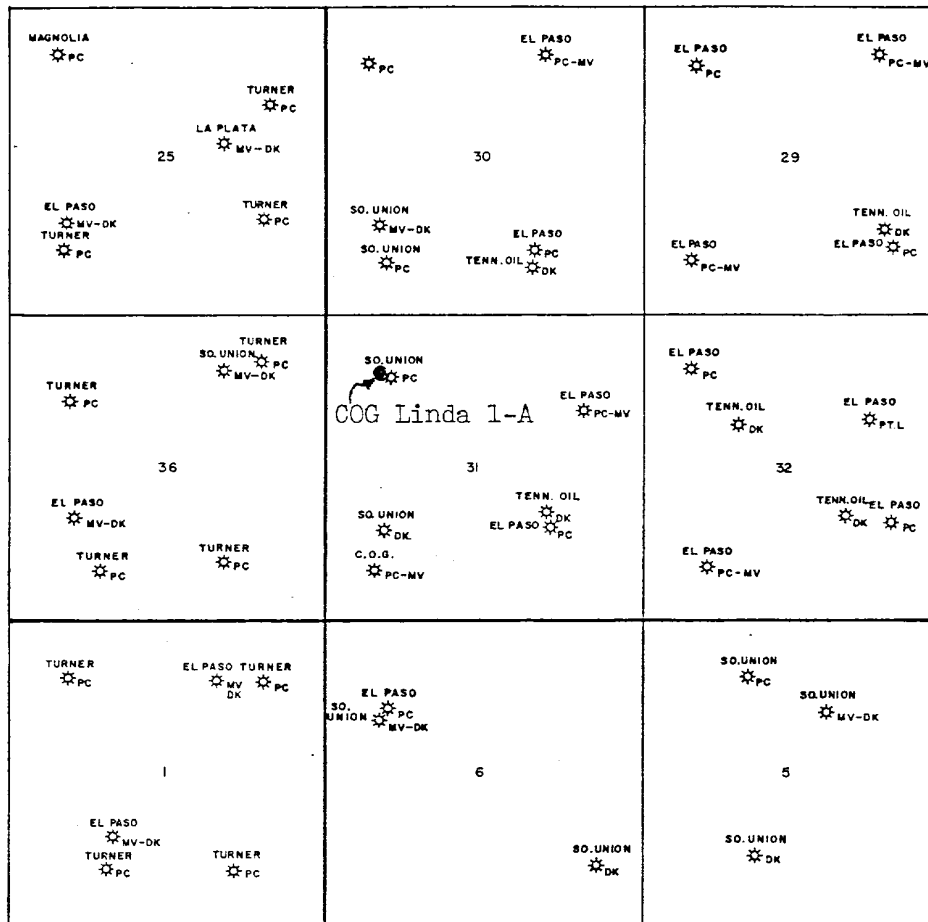
C. M. Parham  
C. M. Parham  
Senior Production Engineer

Attachment A  
Development Plan for Surface Use  
Linda No. 1-A  
Consolidated Oil & Gas, Inc.-Operator  
Navajo Contract 1-49-IND-8469  
NW NW Sec. 31-T27N-R8W, NMPM  
San Juan County, New Mexico



R9W

R8W



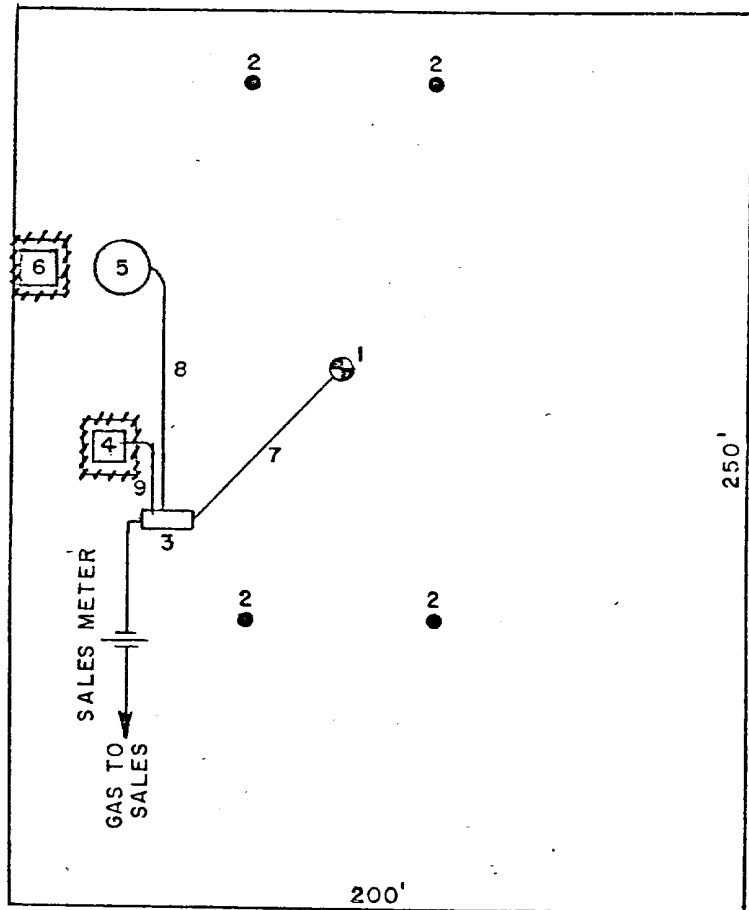
SAN JUAN COUNTY, NEW MEXICO

Attachment B  
 Development Plan for Surface Use  
 Linda No. 1-A  
 Consolidated Oil & Gas, Inc.-Operator  
 Navajo Contract 1-49-IND-8469  
 San Juan County, New Mexico

CONSOLIDATED OIL & GAS, INC. - OPERATOR

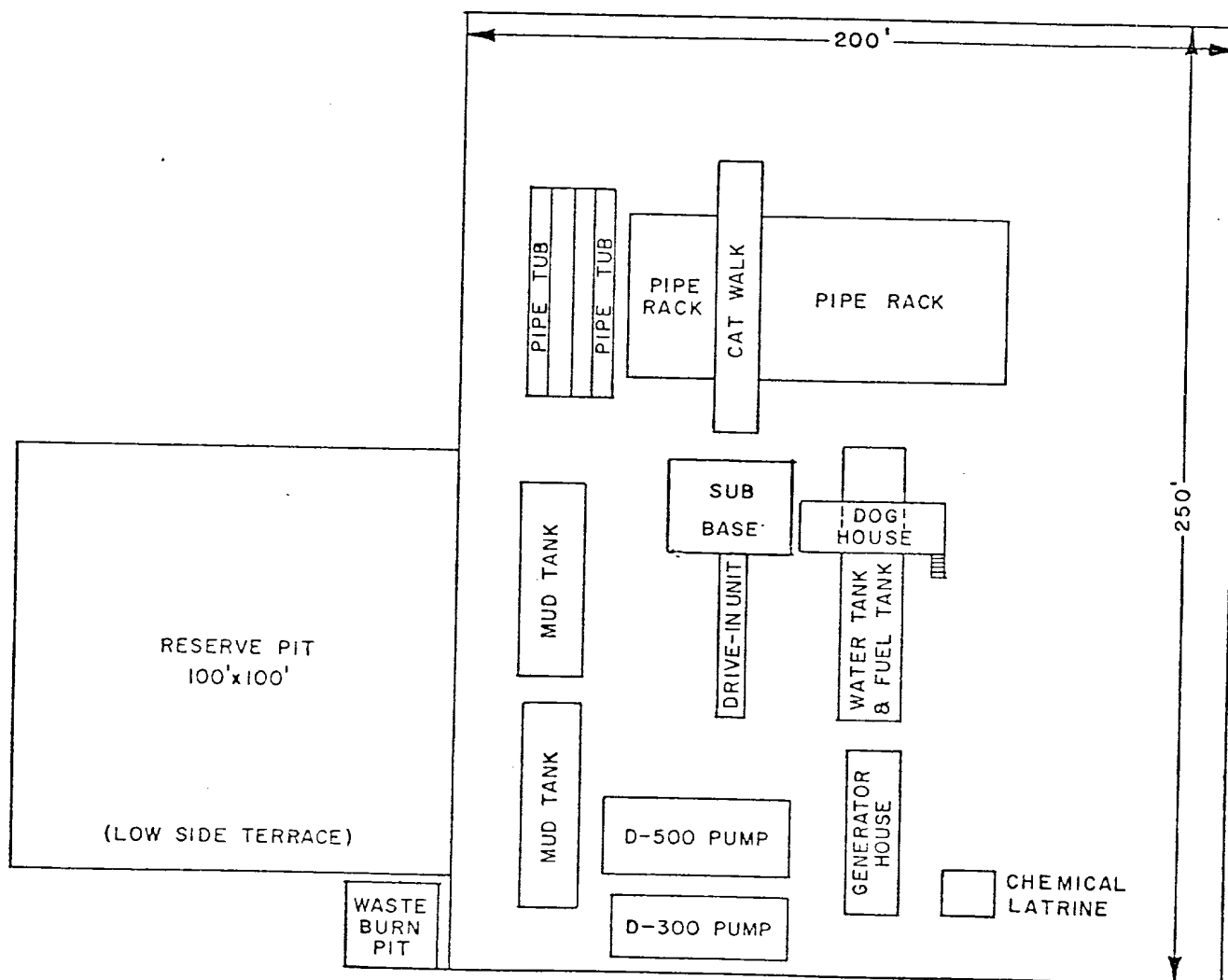
LINDA NO. 1-A  
NAVAJO CONTRACT 1-49-IND-8469  
NW NW Section 31, T27N, R8W  
SAN JUAN COUNTY, NEW MEXICO

1. Well
2. Dead Men
3. Prod. Unit
4. Water Pit
5. 300 bbl. Oil Tank
6. Water Pit
7. 2" Buried flow line
8. 1½" Oil Line
9. 1½" Water Line



Fence  $\therefore \text{||||}$





ATTACHMENT "D"

DEVELOPMENT PLAN FOR SURFACE USE

CONSOLIDATED OIL & GAS, INC. - OPERATOR

LINDA NO. 1-A  
 NAVAJO CONTRACT 1-49-IND-8469  
 NW NW Section 31, T27N, R8W  
 SAN JUAN COUNTY, NEW MEXICO





# Consolidated Oil & Gas, Inc.

LINCOLN TOWER BUILDING  
1860 LINCOLN STREET  
DENVER, COLORADO 80295  
(303) 861-5252

U. S. Geological Survey  
P. O. Box 959  
Farmington, New Mexico 87401

Re: Application for Permit to Drill  
Linda No. 1-A  
San Juan County, New Mexico

Gentlemen:

Following is the information requested in NTL-6 to accompany the permit to drill:

1. Location: 900' FNL and 925' FWL Sec 31, T27N, R8W, NMPM, San Juan County, New Mexico
2. Elevation of Unprepared Ground: 6033'
3. Geologic Name of Surface Formation: Nacimiento
4. Type of Drilling Tools: Rotary
5. Proposed Drilling Depth: 4650'
6. Estimated Tops of Geologic Markers: Ojo Alamo 260'; Pictured Cliffs 1870'; Cliff House 3496'; Pt. Lookout 4165'.
7. Estimated Depths at Which Anticipated Gas or Oil Bearing Formations Expected: Pictured Cliffs 1870'; Cliff House 3496'; Pt. Lookout 4165'.

8. Casing Program and Setting Depth:

	<u>Size</u>	<u>Weight</u>	<u>Grade</u>	<u>Condition</u>	<u>Setting Depth</u>
Surface	8-5/8"	24.0#	K-55	New	250'
Production	4-1/2"	10.5#	K-55	New	4650'

nmoc

9. Casing Setting Depth and Cementing:

- a. Surface casing will be set at 250'. Cement will be circulated to surface with approximately 200 sx Class "B" neat cement containing 2%  $\text{CaCl}_2$ .
- b. Production casing will be run to total depth and cemented with 60 sx 65-35 Pozmix w/12% gel, tailed w/250 sx 50-50 Pozmix w/4% gel and 0.4% FLA.

Note: Exact volume of cement to be determined after running Caliper log.

10. Pressure Control Equipment: See attached Diagram "A".

11. Circulating Media: 0-250' fresh water spud mud; 250'-TD fresh water, low solid mud with following properties:

Viscosity 32-38 sec., water loss 20-6 cc, weight 8.5-9.0 ppg with heavier weights if required by well conditions.

12. Testing, Logging and Coring Programs:

- a. Open hole logs will be run prior to running production casing.
- b. Coring is not planned.

13. Abnormal Pressure or Temperature and Hydrogen Sulfide Gas:

We do not anticipate abnormal pressure, temperature, or hydrogen sulfide gas; however, remote control blowout preventer as shown on attached Diagram "A" will be installed.

14. Anticipated Starting Date: Drilling operations should start shortly after April 15, 1979.

15. Other Facets of the Proposed Operations: None.

Very truly yours,

CONSOLIDATED OIL & GAS, INC.



C. M. Parham  
Senior Production Engineer

CMP:sm  
Attachments

DIAGRAM "A"

U.S.G.S. APPLICATION FOR PERMIT  
TO DRILL

CONSOLIDATED OIL & GAS, INC - OPERATOR

LINDA NO. 1-A  
NAVAJO CONTRACT 1-49-IND-8469  
NW NW Section 31, T27N, R8W  
SAN JUAN COUNTY, NEW MEXICO

