

UNITED STATES
DEPARTMENT OF THE INTERIOR
GEOLOGICAL SURVEY30-045-03411
5. LEASE DESIGNATION AND SERIAL NO.
SF-080382A

APPLICATION FOR PERMIT TO DRILL, DEEPEN, OR PLUG BACK

1a. TYPE OF WORK

DRILL ☒DEEPEN ☐PLUG BACK ☐

b. TYPE OF WELL

OIL
WELL ☐GAS
WELL ☒

OTHER

SINGLE
ZONE ☒MULTIPLE
ZONE ☐

2. NAME OF OPERATOR

Southland Royalty Company

3. ADDRESS OF OPERATOR

P. O. Drawer 570, Farmington, New Mexico

4. LOCATION OF WELL (Report location clearly and in accordance with any State requirements.*)

At surface

600' FSL & 900' FEL

At proposed prod. zone

14. DISTANCE IN MILES AND DIRECTION FROM NEAREST TOWN OR POST OFFICE*

7 miles south/southwest of Bloomfield, New Mexico

15. DISTANCE FROM PROPOSED*

LOCATION TO NEAREST

PROPERTY OR LEASE LINE, FT.

(Also to nearest drlg. unit line, if any)

18. DISTANCE FROM PROPOSED LOCATION*

TO NEAREST WELL, DRILLING, COMPLETED,
OR APPLIED FOR, ON THIS LEASE, FT.

16. NO. OF ACRES IN LEASE

19. PROPOSED DEPTH

6650'

17. NO. OF ACRES ASSIGNED
TO THIS WELL

E/ 320.54

20. ROTARY OR CABLE TOOLS

Rotary

21. ELEVATIONS (Show whether DF, RT, GR, etc.)

6127'

22. APPROX. DATE WORK WILL START*

23.

PROPOSED CASING AND CEMENTING PROGRAM

SIZE OF HOLE	SIZE OF CASING	WEIGHT PER FOOT	SETTING DEPTH	QUANTITY OF CEMENT
12-1/4"	8-5/8"	24#	200'	140 sxs
7-7/8"	4-1/2"	10.5#	6650'	220 sxs (1st Stage)
				275 sxs (2nd Stage)
				240 sxs (3rd Stage)

Top of Ojo Alamo sand is at 1130',

Top of Pictured Cliffs sand is at 1888',

Top of Mesa Verde sand is at 3492',

Fresh water mud will be used to drill from surface to total depth.

It is anticipated that an IES and a GR-Density log will be run at total depth.

No abnormal pressures or poisonous gases are anticipated in this well.

It is expected that this well will be drilled before June 15, 1979. This depends
on time required for approvals, rig availability and the weather.Gas is dedicatedThis is an unorthodox location. Application is being made to N.M.O.C.
approval.

IN ABOVE SPACE DESCRIBE PROPOSED PROGRAM: If proposal is to deepen or plug back, give data on present productive zone and proposed new productive zone. If proposal is to drill or deepen directionally, give pertinent data on subsurface locations and measured and true vertical depths. Give blowout preventer program, if any.

24.

SIGNED

TITLE District Production Manager DATE March 5, 1979

(This space for Federal or State office use)

PERMIT NO.

APPROVAL DATE

APPROVED BY

TITLE

DATE

CONDITIONS OF APPROVAL, IF ANY

*See Instructions On Reverse Side

**NEW MEXICO OIL CONSERVATION COMMISSION
WELL LOCATION AND ACREAGE DEDICATION PLAT**

Form C-102
Supersedes C-128
Effective 1-1-65

All distances must be from the outer boundaries of the Section.

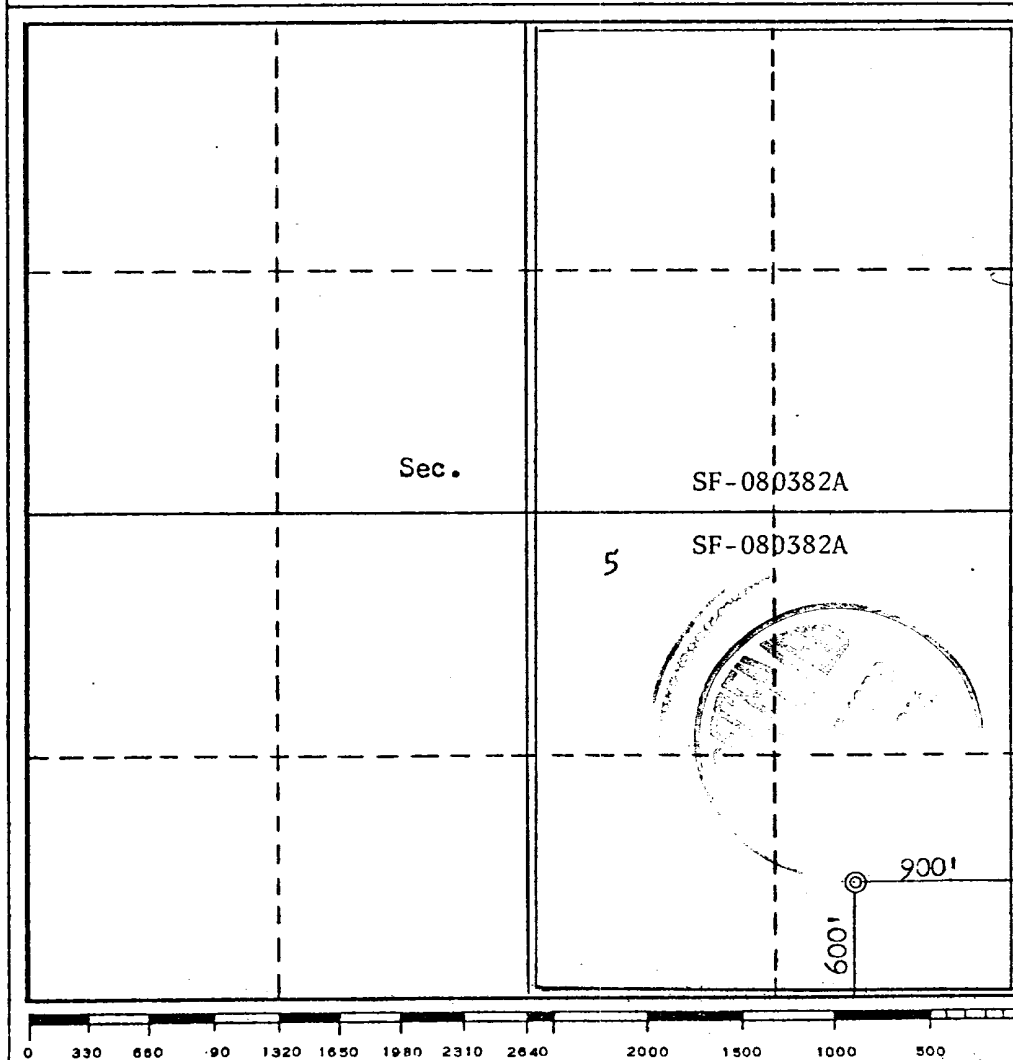
Operator SOUTHLAND ROYALTY COMPANY			Lease FRONTIER "C"		Well No. 2R
Unit Letter P	Section 5	Township 27N	Range 11W	County San Juan	
Actual Footage Location of Well: <div style="display: flex; justify-content: space-between;"> 600 feet from the South line and 900 feet from the East line </div>					
Ground Level Elev. 6127	Producing Formation Dakota	Pool Basin	Dedicated Acreage: 320.54 Acres		

1. Outline the acreage dedicated to the subject well by colored pencil or hachure marks on the plat below.
2. If more than one lease is dedicated to the well, outline each and identify the ownership thereof (both as to working interest and royalty).
3. If more than one lease of different ownership is dedicated to the well, have the interests of all owners been consolidated by communitization, unitization, force-pooling, etc?

☐ Yes ☐ No If answer is "yes," type of consolidation _____

If answer is "no," list the owners and tract descriptions which have actually been consolidated. (Use reverse side of this form if necessary.) _____

No allowable will be assigned to the well until all interests have been consolidated (by communitization, unitization, forced-pooling, or otherwise) or until a non-standard unit, eliminating such interests, has been approved by the Commission.



CERTIFICATION

I hereby certify that the information contained herein is true and complete to the best of my knowledge and belief.

Name _____
Position
District Production Manager
Company
Southland Royalty Company
Date
March 5, 1979

I hereby certify that the well location shown on this plat was plotted from field notes of actual surveys made by me or under my supervision, and that the same is true and correct to the best of my knowledge and belief.

Date Surveyed
February 12, 1979
Registered Professional Engineer and/or Land Surveyor
Fred B. Kerr
Certificate No. **3950**

DRILLING SCHEDULE: FRONTIER C #2R

Location: 600' FSL & 900' FEL, Section 5, T27N, R11W, San Juan County, New Mexico

Field: Basin Dakota

Elevation: 6127' GR

GEOLOGY:

Form. Tops: Ojo Alamo	1130'	Greenhorn	6337'
Pictured Cliffs	1888'	Graneros	6395'
Cliff House	3492'	Dakota	6507'
Point Lookout	4300'	Total Depth	6650'
Gallup	5498'		

Logging program: GR-Density and IES at total depth.

Coring Program: None

Natural Gauges:

DRILLING:

Contractor:

Tool Pusher:

SRC Representative: Ross Lankford

SRC Ans. Service: 325-1841

Dispatch Number: 325-7391

Mud Program: Fresh water mud from surface to total depth.

MATERIALS:

Casing Program:	Hole Size	Depth	Casing Size	Wt & Grade
	12-1/4"	200'	8-5/8"	24# K-55
	7-7/8"	6650'	4-1/2"	10.5# K-55

CEMENTING:

8-5/8" surface casing: 165.2 cu. ft. (140 sxs) Class B with 3% CaCl.

4-1/2" casing 325.6 cu. ft. (220 sxs) 1st Stage - 50/50 Poz with 6% gel, 1/4# celloflake per sack.

407.0 cu. ft. (275 sxs) 2nd Stage - DV tool at 4675'. 50/50 Poz with 6% gel and 1/4# celloflake per sack.

355.2 cu. ft. (240 sxs) 3rd Stage - DV tool at 2100'. 50/50 Poz with 6% gel and 1/4# celloflake per sack.



Southland Royalty Company

United States Geological Survey
P. O. Box 959
Farmington, New Mexico 87401

Attention: Mr. P. T. McGrath

Dear Sir:

I hereby certify that I, or persons under my direct supervision, have inspected the proposed drillsite and access route; that I am familiar with the conditions which presently exist; that the statements made in this plan are, to the best of my knowledge, true and correct; and, that the work associated with the operations proposed herein be performed by Southland Royalty Company and its contractors and subcontractors in conformity with this plan and the terms and conditions under which it is approved.

Date: March 5, 1979

Name: 

Title: District Production Manager



Southland Royalty Company

March 5, 1979

United States Geological Survey
P. O. Box 959
Farmington, New Mexico

Attention: Mr. P. T. McGrath

Re: Blowout Preventer Plan

Dear Sir:

All drilling and completion rigs will be equipped with 8" or larger double gate hydraulic blowout preventers and a hydraulic operated closing unit with steel lines.

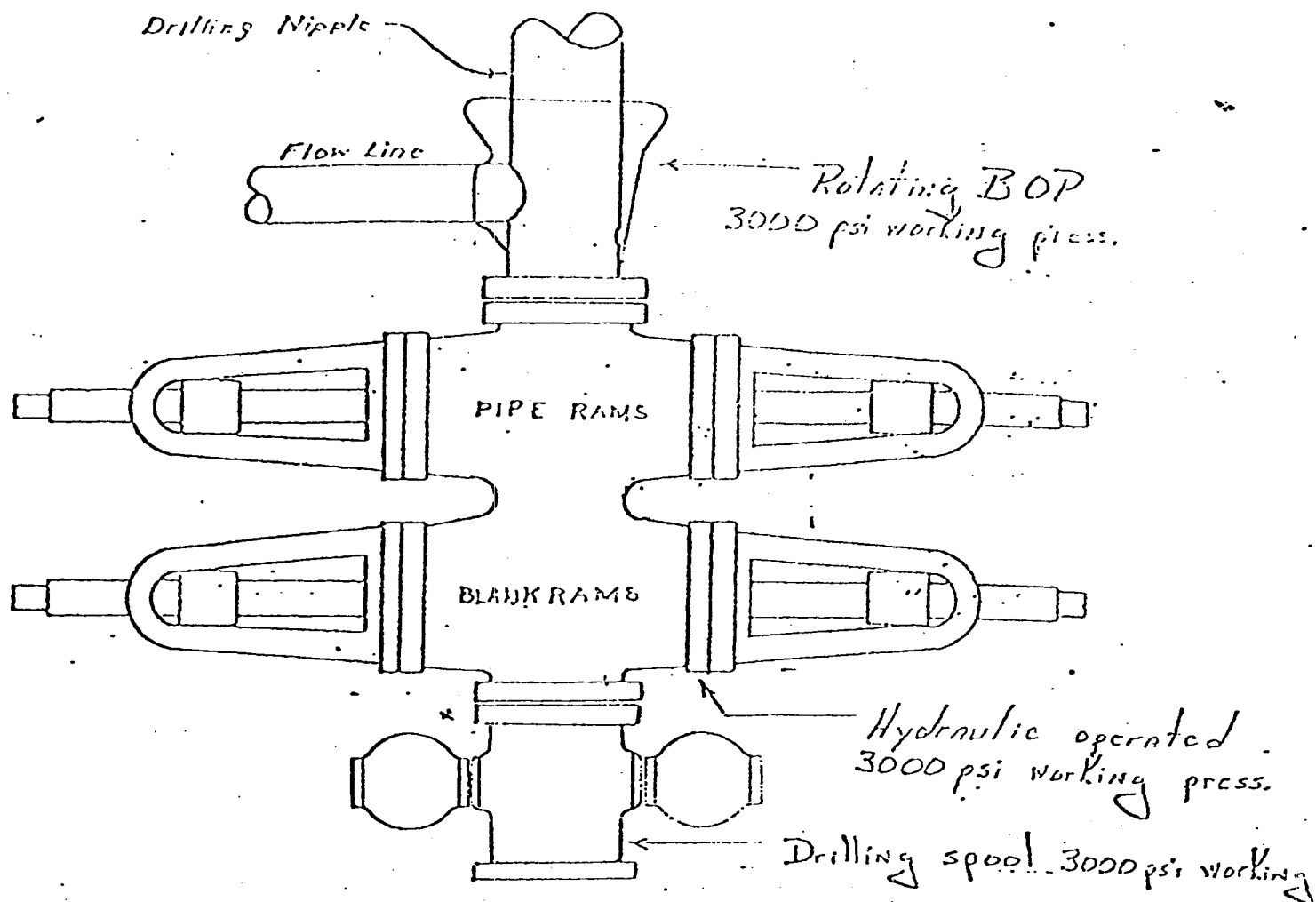
The preventer is 3000# working pressure and 6000# test.

All crews will be thoroughly trained in the operation of this preventer. The preventer will be tested frequently enough to insure proper operation.

Yours truly,

L. O. Van Ryan
District Production Manager

LOVR/dg



Preventers and spools are to have
through bore of 6" - 3000# PSI or larger.



Southland Royalty Company

March 5, 1979

United States Geological Survey
P. O. Box 959
Farmington, New Mexico

Attention: Mr. P. T. McGrath

Dear Sir:

Enclosed please find a map showing existing roads and planned access roads to Southland Royalty Company's Frontier C #2R well. The locations of tank batteries and flow lines will be on location with well. A burn pit will be provided for disposal of trash. Cuttings, drilling fluid and produced fluids will be put into the reserve pit and properly disposed of depending on amount and type of fluids.

Contractor will furnish restroom facilities on location.

There will be no air strips or camps.

Also, enclosed is a location layout showing approximate location of rig, pits and pipe racks and cut required to build this location.

Water supply will be San Juan River.

The location will be restored according to Bureau of Land Management standards. This work will begin when all related construction is finished.

Mr. Ross Lankford will be Southland Royalty Company's field representative supervising these operations.

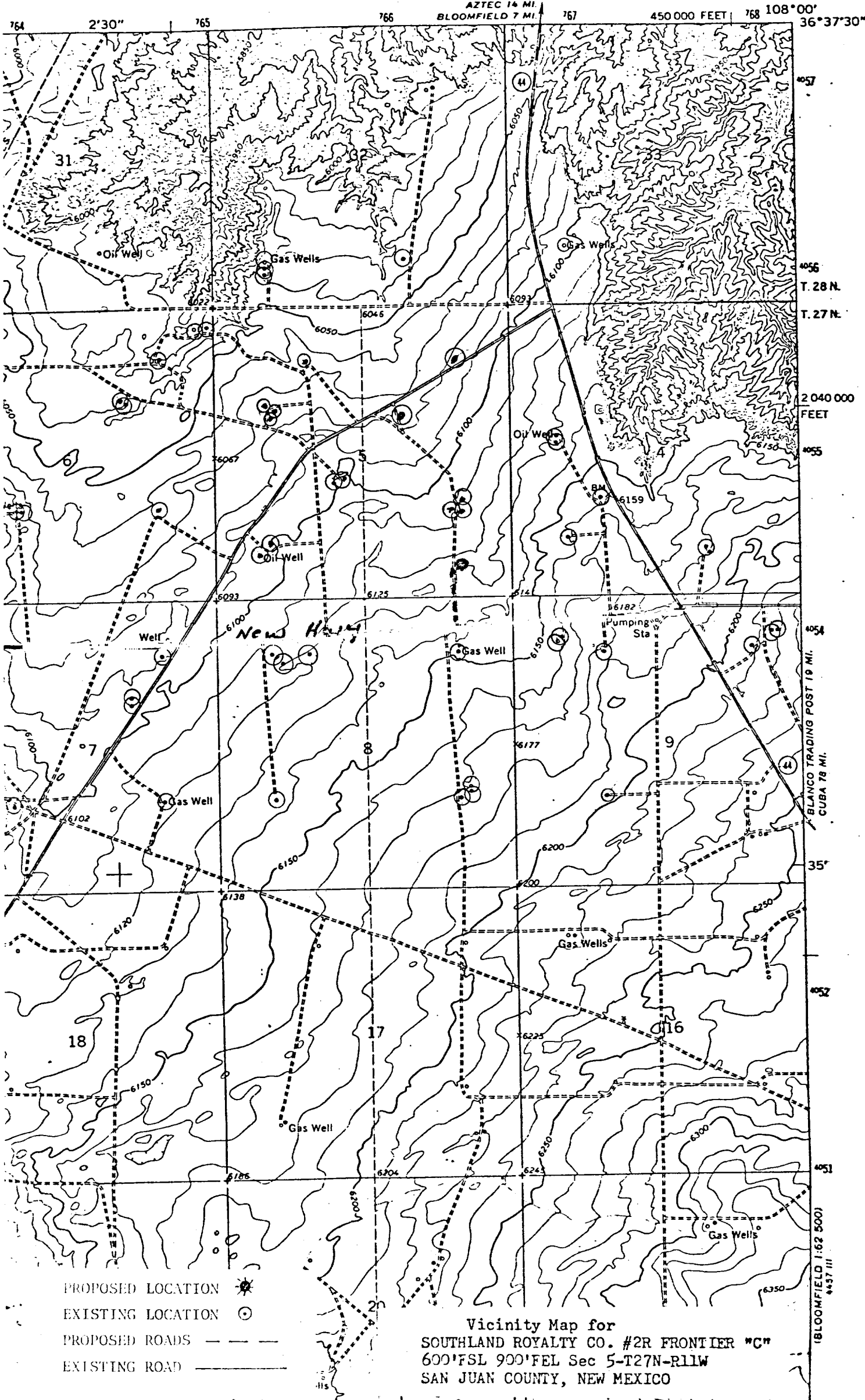
Yours truly,

L. O. Van Ryan
District Production Manager

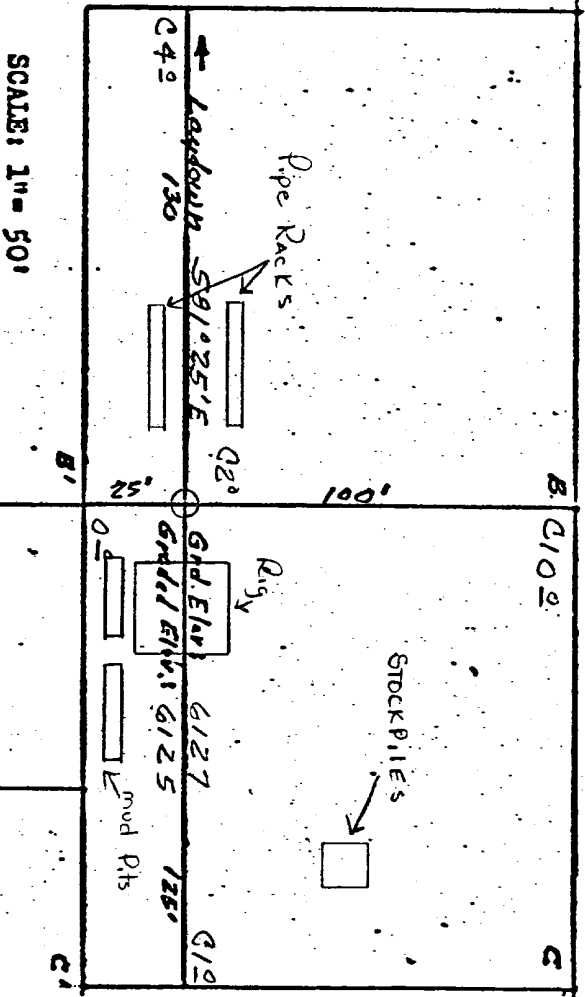
LOVR/dg

GALLEGOS TRADING POST QUADRANGLE
NEW MEXICO-SAN JUAN CO.
7.5 MINUTE SERIES (TOPOGRAPHIC)

BLOOMFIELD



Location: 10119 101
 SOUTHLAND ROYALTY CO. #2R Frontier "C"
 600' FSL 900' FEL SEC 5-127N-111W
 SAN JUAN COUNTY, NEW MEXICO



North 1"=40' A-A' & Horiz: 1"=100'

6130				
6120				
6110				

B-B' &

6130				
6120				
6110				

North 1"=40' C-C' & Horiz: 1"=100'

D-D' &
