

STATE OF NEW MEXICO
ENERGY AND MINERALS DEPARTMENT

OIL CONSERVATION DIVISION

P. O. BOX 2088

SANTA FE, NEW MEXICO 87501

Form C-102
Revised 10-1-79

All distances must be from the outer boundaries of the Section.

Operator MERRION OIL & GAS CORP.			Lease Hi Roll		Well No. 1R
Unit Letter O	Section 35	Township 27N	Range 13W	County San Juan	

Actual Footage Location of Well:

840 feet from the South line and 1450 feet from the East line

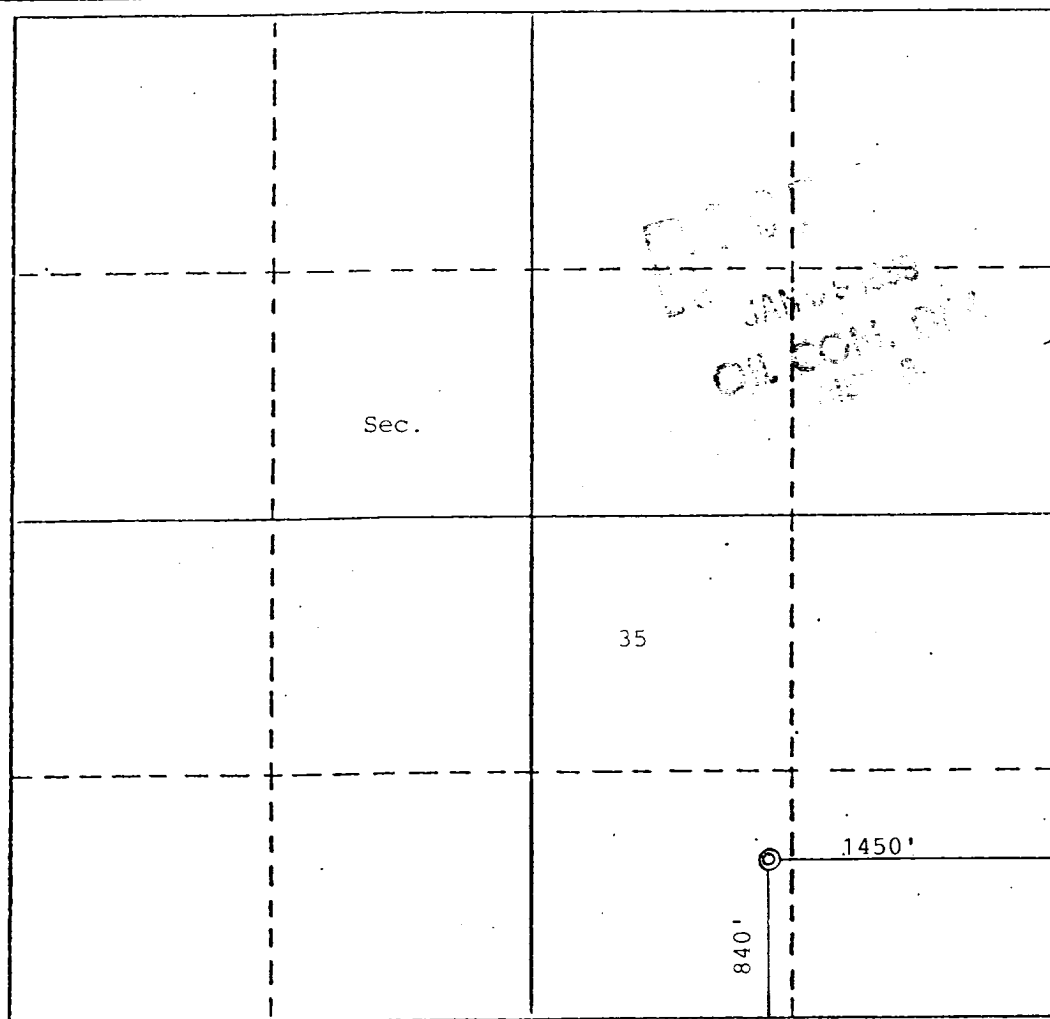
Ground Level Elev. 5995 GL	Producing Formation Pictured Cliffs	Pool WAW Fruitland Pictured Cliffs Sand	Dedicated Acreage: 160 Acres
-------------------------------	--	--	---------------------------------

1. Outline the acreage dedicated to the subject well by colored pencil or hachure marks on the plat below.
2. If more than one lease is dedicated to the well, outline each and identify the ownership thereof (both as to working interest and royalty).
3. If more than one lease of different ownership is dedicated to the well, have the interests of all owners been consolidated by communitization, unitization, force-pooling, etc?

☐ Yes ☐ No If answer is "yes," type of consolidation _____

If answer is "no," list the owners and tract descriptions which have actually been consolidated. (Use reverse side of this form if necessary.) _____

No allowable will be assigned to the well until all interests have been consolidated (by communitization, unitization, forced-pooling, or otherwise) or until a non-standard unit, eliminating such interests, has been approved by the Division.



CERTIFICATION

I hereby certify that the information contained herein is true and complete to the best of my knowledge and belief.

Name Steven S. Dunn

Position
Operations Manager

Company
Merrion Oil & Gas Corp.

Date
12/29/88

I hereby certify that the well location shown on this plat was plotted from field notes of actual surveys made by me or under my supervision, and that the same is true and correct to the best of my knowledge and belief.

Date Surveyed

Registered Professional Engineer and/or Land Surveyor

Certificate No.

