

UNITED STATES
DEPARTMENT OF THE INTERIOR
BUREAU OF LAND MANAGEMENT

FORM APPROVED
OMB No. 1004-0135
Expires July 31, 1996

SUNDRY NOTICES AND REPORTS ON WELLS

Do not use this form for proposals to drill or to re-enter an abandoned well. Use Form 3160-5 (APD) for such proposals.

SUBMIT IN TRIPLICATE - Other instructions on reverse side

1. Type of Well
☐ Oil Well ☒ Gas Well ☐ Other

2. Name of Operator
Amoco Production

3a. Address
200 Amoco Court, Farmington, NM

3b. Phone No. (include area code)
505-326-9432

4. Location of Well (Footage, Sec., T., R., M., or Survey Description)
1110' FNL 1850' FWL, Sec. 25, T28N-R8W

5. Lease Serial No.

NMNM 013860 A

6. If Indian, Allottee or Tribe Name
53

7. If Unit or CA/Agreement, Name and/or No.

8. Well Name and No.

Russell A #2A

9. API Well No.

30-045-23704

10. Field and Pool, or Exploratory Area

Blanco Mesa Verde / Otero Chacra

11. County or Parish, State

San Juan, NM

12. CHECK APPROPRIATE BOX(ES) TO INDICATE NATURE OF NOTICE, REPORT, OR OTHER DATA

TYPE OF SUBMISSION	TYPE OF ACTION			
<input checked="" type="checkbox"/> Notice of Intent	<input type="checkbox"/> Acidize	<input type="checkbox"/> Deepen	<input type="checkbox"/> Production (Start/Resume)	<input type="checkbox"/> Water Shut-Off
<input type="checkbox"/> Subsequent Report	<input type="checkbox"/> Alter Casing	<input type="checkbox"/> Fracture Treat	<input type="checkbox"/> Reclamation	<input type="checkbox"/> Well Integrity
<input type="checkbox"/> Final Abandonment Notice	<input type="checkbox"/> Casing Repair	<input type="checkbox"/> New Construction	<input type="checkbox"/> Recomplete	<input checked="" type="checkbox"/> Other Fixed Rate
	<input type="checkbox"/> Change Plans	<input type="checkbox"/> Plug and Abandon	<input type="checkbox"/> Temporarily Abandon	Commingle
	<input type="checkbox"/> Convert to Injection	<input type="checkbox"/> Plug Back	<input type="checkbox"/> Water Disposal	Application

13. Describe Proposed or Completed Operation (clearly state all pertinent details, including estimated starting date of any proposed work and approximate duration thereof. If the proposal is to deepen directionally or recompleat horizontally, give subsurface locations and measured and true vertical depths of all pertinent markers and zones. Attach the Bond under which the work will be performed or provide the Bond No. on file with BLM/BIA. Required subsequent reports shall be filed within 30 days following completion of the involved operations. If the operation results in a multiple completion or recompleat in a new interval, a Form 3160-4 shall be filed once testing has been completed. Final Abandonment Notices shall be filed only after all requirements, including reclamation, have been completed, and the operator has determined that the site is ready for final inspection.)

The subject well was down hole commingled in August 1996, using the subtraction method of allocation. Production has stabilized and Amoco requests approval to convert to a fixed rate allocation as follows.

Formation: Gas Oil Water
Blanco Mesa Verde 24.12% 24.12% 24.12%
Otero Chacra 75.88% 75.88 75.88

Attached are a chart showing the results of the subtraction method and the data since commingling began.
cc: Wellfile

14. I hereby certify that the foregoing is true and correct

Name (Printed/Typed)

Mark R. Stelling

Signature

Mark R. Stelling

Title

Sr. Business Analyst

Date

4/10/2000

THIS SPACE FOR FEDERAL OR STATE OFFICE USE

Approved by

Wayne Townsend

Title

Acting

Date

4/18/00

Conditions of approval, if any, are attached. Approval of this notice does not warrant or certify that the applicant holds legal or equitable title to those rights in the subject lease which would entitle the applicant to conduct operations thereon.

Office

Title 18 U.S.C. Section 1001, makes it a crime for any person knowingly and willfully to make to any department or agency of the United States any false, fictitious or fraudulent statements or representations as to any matter within its jurisdiction.

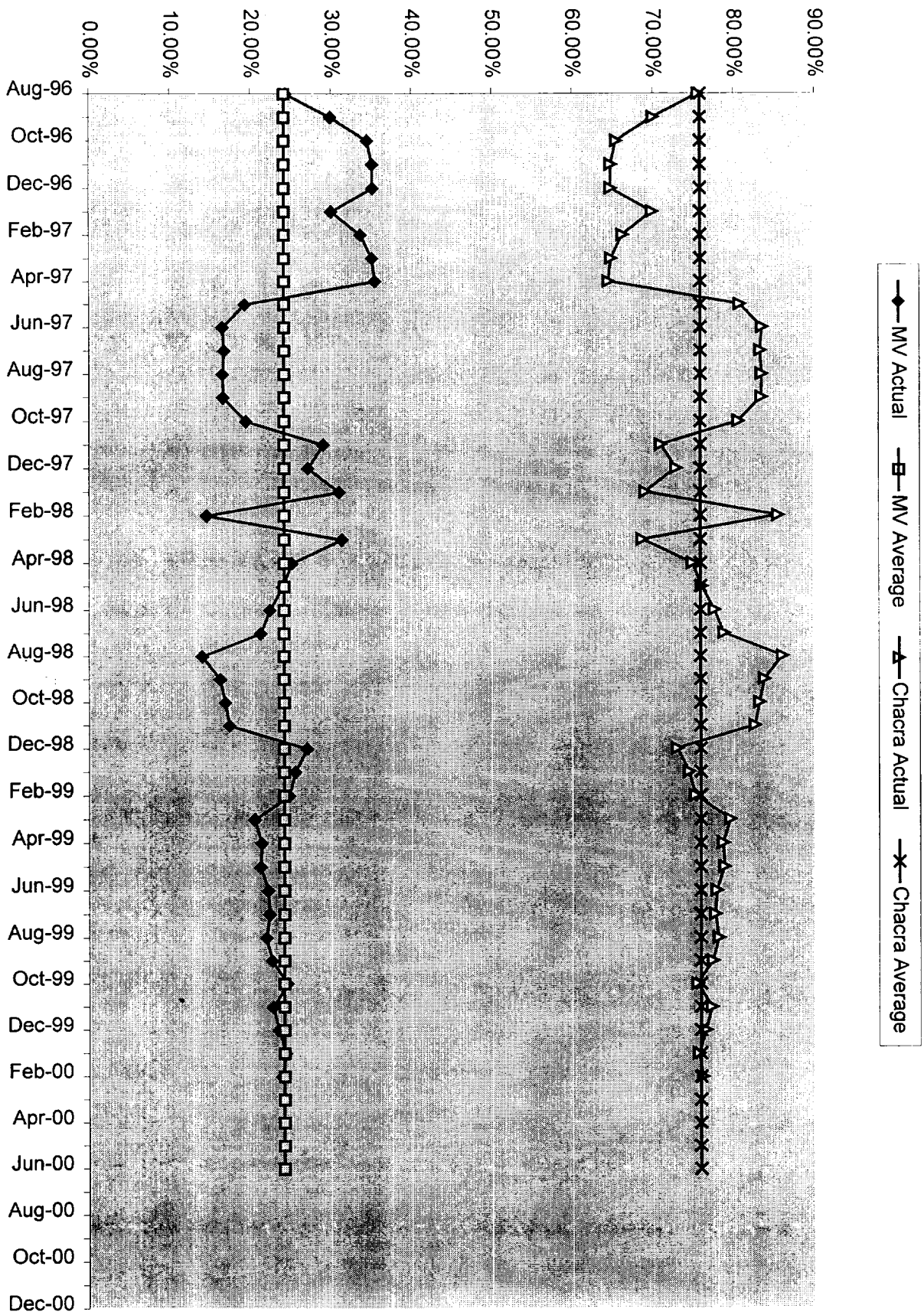
(Instructions on reverse)

NMOCD

Russell A #2A - 3004523704
NMNM013860A
Fixed Rate Allocation Request

Production Month	Flow Hours in Days	Total MCF 14.73	Fixed MV (mcf)	Allocated MV (mcf)	MV % Actual	MV Average %	Allocated CH (mcf)	CH% Actual	CH Average %
Aug-96	10	2956	73	721	24.38%	24.12%	2,235	75.62%	75.88%
Sep-96	28	6771	72	2,027	29.94%	24.12%	4,744	70.06%	75.88%
Oct-96	25	5164	71	1,782	34.51%	24.12%	3,382	65.49%	75.88%
Nov-96	24	4783	70	1,682	35.17%	24.12%	3,101	64.83%	75.88%
Dec-96	22	4237	69	1,491	35.20%	24.12%	2,746	64.80%	75.88%
Jan-97	20	4577	68	1,375	30.04%	24.12%	3,202	69.96%	75.88%
Feb-97	22	4459	67	1,502	33.69%	24.12%	2,957	66.31%	75.88%
Mar-97	24	4500	66	1,581	35.14%	24.12%	2,919	64.86%	75.88%
Apr-97	24	4341	65	1,540	35.48%	24.12%	2,801	64.52%	75.88%
May-97	12	4060	64	782	19.27%	24.12%	3,278	80.73%	75.88%
Jun-97	9	3620	63	598	16.52%	24.12%	3,022	83.48%	75.88%
Jul-97	10	3770	63	631	16.72%	24.12%	3,139	83.28%	75.88%
Aug-97	9	3537	62	585	16.54%	24.12%	2,952	83.46%	75.88%
Sep-97	10	3570	61	593	16.62%	24.12%	2,977	83.38%	75.88%
Oct-97	11	3415	60	664	19.45%	24.12%	2,751	80.55%	75.88%
Nov-97	9	1913	59	555	29.00%	24.12%	1,358	71.00%	75.88%
Dec-97	13	2677	58	726	27.13%	24.12%	1,951	72.87%	75.88%
Jan-98	14	2570	58	796	30.97%	24.12%	1,774	69.03%	75.88%
Feb-98	5	1985	57	289	14.56%	24.12%	1,696	85.44%	75.88%
Mar-98	18	3221	56	1,009	31.32%	24.12%	2,212	68.68%	75.88%
Apr-98	20	4470	55	1,123	25.12%	24.12%	3,347	74.88%	75.88%
May-98	15	3366	55	807	23.97%	24.12%	2,559	76.03%	75.88%
Jun-98	14	3483	54	780	22.40%	24.12%	2,703	77.60%	75.88%
Jul-98	12	3023	53	642	21.24%	24.12%	2,381	78.76%	75.88%
Aug-98	4	1509	52	212	14.03%	24.12%	1,297	85.97%	75.88%
Sep-98	14	4606	52	748	16.23%	24.12%	3,858	83.77%	75.88%
Oct-98	17	5026	51	847	16.86%	24.12%	4,179	83.14%	75.88%
Nov-98	15	4243	50	738	17.39%	24.12%	3,505	82.61%	75.88%
Dec-98	23	4209	50	1,136	27.00%	24.12%	3,073	73.00%	75.88%
Jan-99	20	3870	49	988	25.53%	24.12%	2,882	74.47%	75.88%
Feb-99	19	3645	48	903	24.77%	24.12%	2,742	75.23%	75.88%
Mar-99	22	5256	48	1,077	20.49%	24.12%	4,179	79.51%	75.88%
Apr-99	22	4879	47	1,042	21.35%	24.12%	3,837	78.65%	75.88%
May-99	20	4237	46	899	21.22%	24.12%	3,338	78.78%	75.88%
Jun-99	22	4464	46	989	22.16%	24.12%	3,475	77.84%	75.88%
Jul-99	22	4527	45	1,011	22.33%	24.12%	3,516	77.67%	75.88%
Aug-99	23	4516	44	990	21.92%	24.12%	3,526	78.08%	75.88%
Sep-99	22	4209	44	953	22.64%	24.12%	3,256	77.36%	75.88%
Oct-99	22	3797	43	932	24.54%	24.12%	2,865	75.46%	75.88%
Nov-99	22	4138	43	942	22.77%	24.12%	3,196	77.23%	75.88%
Dec-99	22	3955	42	929	23.49%	24.12%	3,026	76.51%	75.88%
Jan-00	22	3848	42	937	24.34%	24.12%	2,911	75.66%	75.88%
Feb-00	21	3553	41	849	23.90%	24.12%	2,704	76.10%	75.88%

Russell Downhole Commingle Allocation





United States Department of the Interior

BUREAU OF LAND MANAGEMENT

Farmington District Office
1235 La Plata Highway
Farmington, New Mexico 87401

April 22, 1996

IN REPLY REFER TO:

NM-013860-A
3162.3-2 (07327)

Pamela W. Staley
Amoco Production Company
P.O. Box 800, 1670 Broadway
Denver, Colorado 80201

Dear Ms. Staley:

We have reviewed your application to commingle production downhole from the Otero Chacra and the Blanco Mesaverde Pools in the following well:

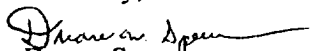
**Russell "A" #2A
1110' FNL, 1850' FWL, Section 25, T-28N, R-8W
San Juan County, New Mexico**

The acreage dedicated to this well contains portions of Federal Lease NM-013860-A. Amoco plans to commingle production from the Chacra formation (which has not produced) with established Mesaverde production. You must allocate Mesaverde production based on extrapolation of the established decline rate, with the remainder of production allocated to the Chacra formation. Utilizing the described allocation method, your application is hereby approved effective the date that production is physically commingled. Allocation may be changed to percentages when both formations are declining at similar rates. Please notify this office when allocation is converted to percentages.

Under provisions of 43 CFR 3165.3, you may request an Administrative Review of the order(s) described above. Such request, including all supporting documents, must be filed in writing within 20 business days of receipt of this notice and must be filed with the State Director, Bureau of Land Management, P. O. Box 27115, Santa Fe, New Mexico 87502-0115. Such request shall not result in a suspension of the order(s) unless the reviewing official so determines. Procedures governing appeals from instructions, orders or decisions are contained in 43 CFR 3165.4 and 43 CFR 4.400 *et seq.*

If you have any questions regarding this correspondence, please contact Ray Hager at (505) 599-6366.

Sincerely,


Duane Spender

Team Lead, Petroleum Management