

UNITED STATES  
DEPARTMENT OF THE INTERIOR

GEOLOGICAL SURVEY

APPLICATION FOR PERMIT TO DRILL, DEEPEN, OR PLUG BACK

1a. TYPE OF WORK

DRILL ☒

DEEPEN ☐

PLUG BACK ☐

b. TYPE OF WELL

OIL  
WELL ☐

GAS  
WELL ☒

OTHER

SINGLE  
ZONE ☒

MULTIPLE  
ZONE ☐

2. NAME OF OPERATOR

Southland Royalty Company

3. ADDRESS OF OPERATOR

P. O. Drawer 570, Farmington, New Mexico

4. LOCATION OF WELL (Report location clearly and in accordance with any State requirements.)

At surface

1345' FNL & 750' FWL

At proposed prod. zone

14. DISTANCE IN MILES AND DIRECTION FROM NEAREST TOWN OR POST OFFICE\*

9 miles south of Blanco, New Mexico

15. DISTANCE FROM PROPOSED\*

LOCATION TO NEAREST  
PROPERTY OR LEASE LINK, FT.  
(Also to nearest drilg. unit line, if any)

750'

16. NO. OF ACRES IN LEASE

2584.94

17. NO. OF ACRES ASSIGNED  
TO THIS WELL

160 w/323.46

18. DISTANCE FROM PROPOSED LOCATION\*  
TO NEAREST WELL, DRILLING, COMPLETED,  
OR APPLIED FOR, ON THIS LEASE, FT.

659'

19. PROPOSED DEPTH

7114'

20. ROTARY OR CABLE TOOLS

Rotary

21. ELEVATIONS (Show whether DF, RT, GR, etc.)

6564' GR

22. APPROX. DATE WORK WILL START\*

September 15, 1979

23.

PROPOSED CASING AND CEMENTING PROGRAM

SIZE OF HOLE	SIZE OF CASING	WEIGHT PER FOOT	SETTING DEPTH	QUANTITY OF CEMENT
12-1/4"	8-5/8"	24#	200'	140 sxs (165 cu. ft.)
7-7/8"	5-1/2"	15.5#	7114	219 sxs (327 cu. ft.) 1st Stage
				215 sxs (321 cu. ft.) 2nd Stage
				128 sxs (191 cu. ft.) 3rd Stage

Surface formation is Nacimiento.

Top of Ojo Alamo sand is at 1264'.

Top of Pictured Cliffs sand is at 2504'.

Top of Cliff House sand is at 4044'.

It is anticipated that an IES will be run from surface to total depth.

It is anticipated that a GR-Density log will be run from TD to the Cliff House.

No abnormal pressures or poisonous gases are anticipated in this well.

It is expected that this well will be drilled before November 1, 1979. This depends on time required for approvals, rig availability and the weather.

Gas is dedicated.

Dedicated Acreage: W/2 Section 7-T27N-R9W

IN ABOVE SPACE DESCRIBE PROPOSED PROGRAM: If proposal is to deepen or plug back, give data on present productive zone and proposed new productive zone. If proposal is to drill or deepen directionally, give pertinent data on subsurface locations and measured and true vertical depths. Give blowout preventer program, if any.

24.

SIGNATURE

TITLE

DATE

(This space for Federal or State office use)

PERMIT NO.

APPROVAL DATE

APPROVED BY

TITLE

DATE

CONDITIONS OF APPROVAL, IF ANY:

\*See Instructions On Reverse Side

## OIL CONSERVATION DIVISION

STATE OF NEW MEXICO  
ENERGY AND MINERALS DEPARTMENTP. O. BOX 2088  
SANTA FE, NEW MEXICO 87501Form C-107  
Revised 10-1-78

All distances must be from the outer boundaries of the Section.

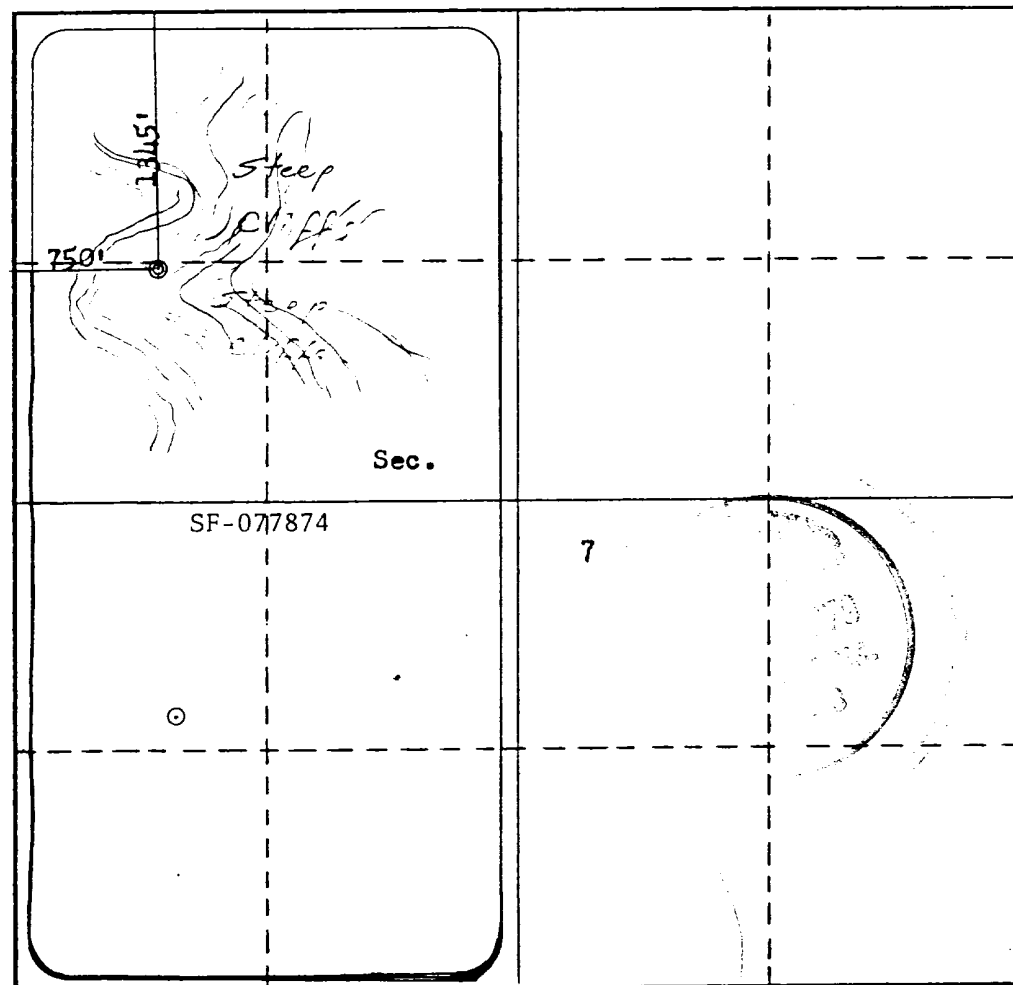
Operator <b>SOUTHLAND ROYALTY COMPANY</b>			Lease <b>HANKS</b>		Well No. <b>11E</b>
Unit Letter <b>E</b>	Section <b>7</b>	Township <b>27N</b>	Range <b>9W</b>	County <b>San Juan</b>	
Actual Footage Location of Well: <b>1345</b> feet from the <b>North</b> line and <b>750</b> feet from the <b>West</b> line					
Ground Level Elev. <b>6564</b>	Producing Formation <b>Dakota</b>		Pool <b>Basin Dakota</b>	Dedicated Acreage: <b>32B.46</b> Acres	

1. Outline the acreage dedicated to the subject well by colored pencil or hachure marks on the plat below.
2. If more than one lease is dedicated to the well, outline each and identify the ownership thereof (both as to working interest and royalty).
3. If more than one lease of different ownership is dedicated to the well, have the interests of all owners been consolidated by communitization, unitization, force-pooling, etc?

☐ Yes ☐ No If answer is "yes," type of consolidation \_\_\_\_\_

If answer is "no," list the owners and tract descriptions which have actually been consolidated. (Use reverse side of this form if necessary.) \_\_\_\_\_

No allowable will be assigned to the well until all interests have been consolidated (by communitization, unitization, forced-pooling, or otherwise) or until a non-standard unit, eliminating such interests, has been approved by the Commission.



## CERTIFICATION

I hereby certify that the information contained herein is true and complete to the best of my knowledge and belief.

Name \_\_\_\_\_  
Position  
District Production Manager  
Company  
Southland Royalty Company  
Date  
August 17, 1979

I hereby certify that the well location shown on this plat was plotted from field notes of actual surveys made by me or under my supervision, and that the same is true and correct to the best of my knowledge and belief.

Date Surveyed  
August 22, 1979  
Registered Professional Engineer  
and/or Land Surveyor  
Fred R. Kern, Jr.  
Certificate No.  
3950

DRILLING SCHEDULE - Hanks #11-E

Location: 1345' FNL & 750' FWL, Section 7, T27N, R9W, San Juan County, New Mexico

Field: Basin Dakota

Elevation: 6564' GL

Geology:

Formation Tops:	Ojo Alamo	1264'	Point Lookout	4734'
	Fruitland	2199'	Gallup	6004'
	Pictured Cliffs	2504'	Graneros	6849'
	Cliff House	4044'	Dakota	6964'
			Total Depth	7114'

Logging Program: IES from surface casing to total depth.  
GR-Density from total depth to Cliff House unless  
Chacra development exists.

Coring Program: None

Natural Gauges: None

Drilling:

Contractor:

Tool Pusher:

Drilling Engineer:

SRC Answering Service: 325-1841

Mud Program: Fresh water mud to top of Point Lookout. Pretreat gel mud  
with 10% LCM maintain mud weight at 9.0 - 9.2, Vis. to 35 sec.,  
WL at 12 to 15.

Materials:

Casing Program:	Hole Size	Depth	Casing Size	Wt. & Grade	
	12-1/4"	200'	8-5/8"	24#	K-55
	7-7/8"	7114'	5-1/2"	15.5#	K-55

Float Equipment: 8-5/8" surface casing - Pathfinder guide shoe

5-1/2" production casing - Pathfinder guide shoe and Howco self-fill insert  
valve. Run 5 centralizers every other joint above shoe.  
Run Dowell stage tools at 5134' and 2318'. Run cement  
basket 1 joint below and 5 centralizers above each tool.

Wellhead Equipment: 8-5/8" X 10", 2000# Bradenhead with 5-1/2" casing hanger  
10" X 6", 2000# tubing head and tree.

## DRILLING SCHEDULE - HANKS #11-E

- 8-5/8" Surface Casing: 140 sacks or (165 cu.ft.) of Class "B" with 1/4# gel flake/sx and 3% Calcium chloride. WOC 12 hours. Test to 600# prior to drilling out. (Volume is 100% excess).
- 5-1/2" Production Casing:
- Stage 1: 219 sxs or (327 cu.ft.) of 50/50 poz with 6% gel, 1/4# gel flake/sx, 0.6% Halad 9 or equivalent. (70% excess to cover Gallup.)
  - Stage 2: 215 sxs or (321 cu.ft.) of 50/50 poz with 6% gel, 1/4# gel flake/sx, 0.6% Halad 9 or equivalent. (70% excess to cover Cliff House.)
  - Stage 3: 128 sxs or (191 cu.ft.) of 50/50 poz with 6% gel followed by 70 sacks Class "B" with 2% calcium chloride. If lost circulation occurred add 1/4# celloflake per sack. (50% excess to cover Ojo Alamo.)
- WOC and circulate between stages as required by well conditions. Run temperature survey after 12 hours.



**Southland Royalty Company**

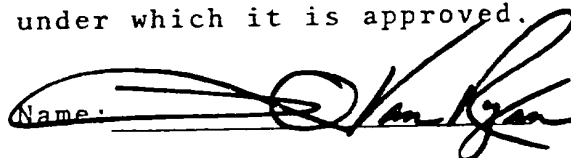
United States Geological Survey  
P. O. Box 959  
Farmington, New Mexico 87401

Attention:

Dear Sir:

I hereby certify that I, or persons under my direct supervision, have inspected the proposed drillsite and access route; that I am familiar with the conditions which presently exist; that the statements made in this plan are, to the best of my knowledge, true and correct; and, that the work associated with the operations proposed herein be performed by Southland Royalty Company and its contractors and subcontractors in conformity with this plan and the terms and conditions under which it is approved.

Date: August 17, 1979

Name: 

Title: District Production Manager



**Southland Royalty Company**

August 17, 1979

United States Geological Survey  
P. O. Box 959  
Farmington, New Mexico

Attention:

Re: Blowout Preventer Plan

Dear Sir:

All drilling and completion rigs will be equipped with 6" or larger double hydraulic blowout preventers and a hydraulic closing unit with steel lines.

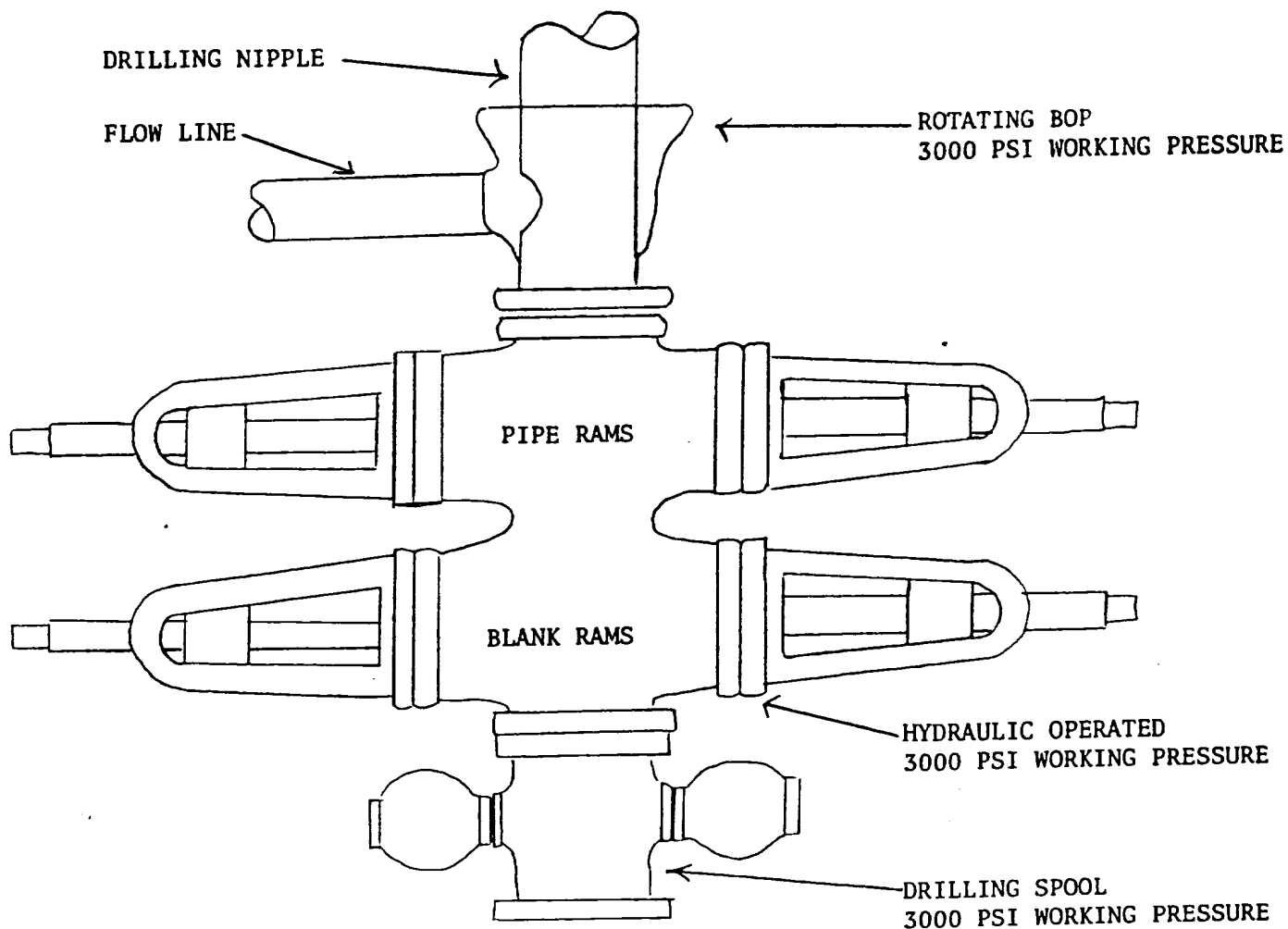
The preventer is 3000# working pressure and 6000# test.

All crews will be thoroughly trained in the operation of this preventer. The preventer will be tested frequently enough to insure proper operation.

Yours truly,

L. O. Van Ryan  
District Production Manager

LOVR/dg



PREVENTERS AND SPOOLS ARE TO HAVE  
THROUGH BORE OF 6" - 3000 PSI OR LARGER



**Southland Royalty Company**

August 17, 1979

United States Geological Survey  
P. O. Box 959  
Farmington, New Mexico

Attention:

Dear Sir:

Enclosed please find a map showing existing roads and planned access roads to Southland Royalty Company's Hanks #11E well. The locations of tank batteries and flow lines will be on location with well. A burn pit will be provided for disposal of trash. Cuttings, drilling fluid and produced fluids will be put into the reserve pit and properly disposed of depending on amount and type of fluids.

Contractor will furnish restroom facilities on location.

There will be no air strips or camps.

Also, enclosed is a location layout showing approximate location of rig, pits and pipe racks and cut required to build this location.

Water supply will be water holes along Blanco Wash.

The location will be restored according to Bureau of Land Management standards. This work will begin when all related construction is finished.

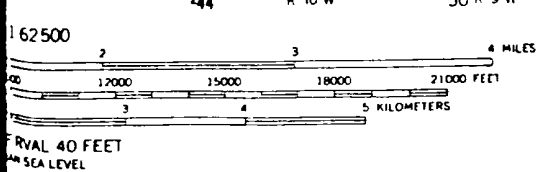
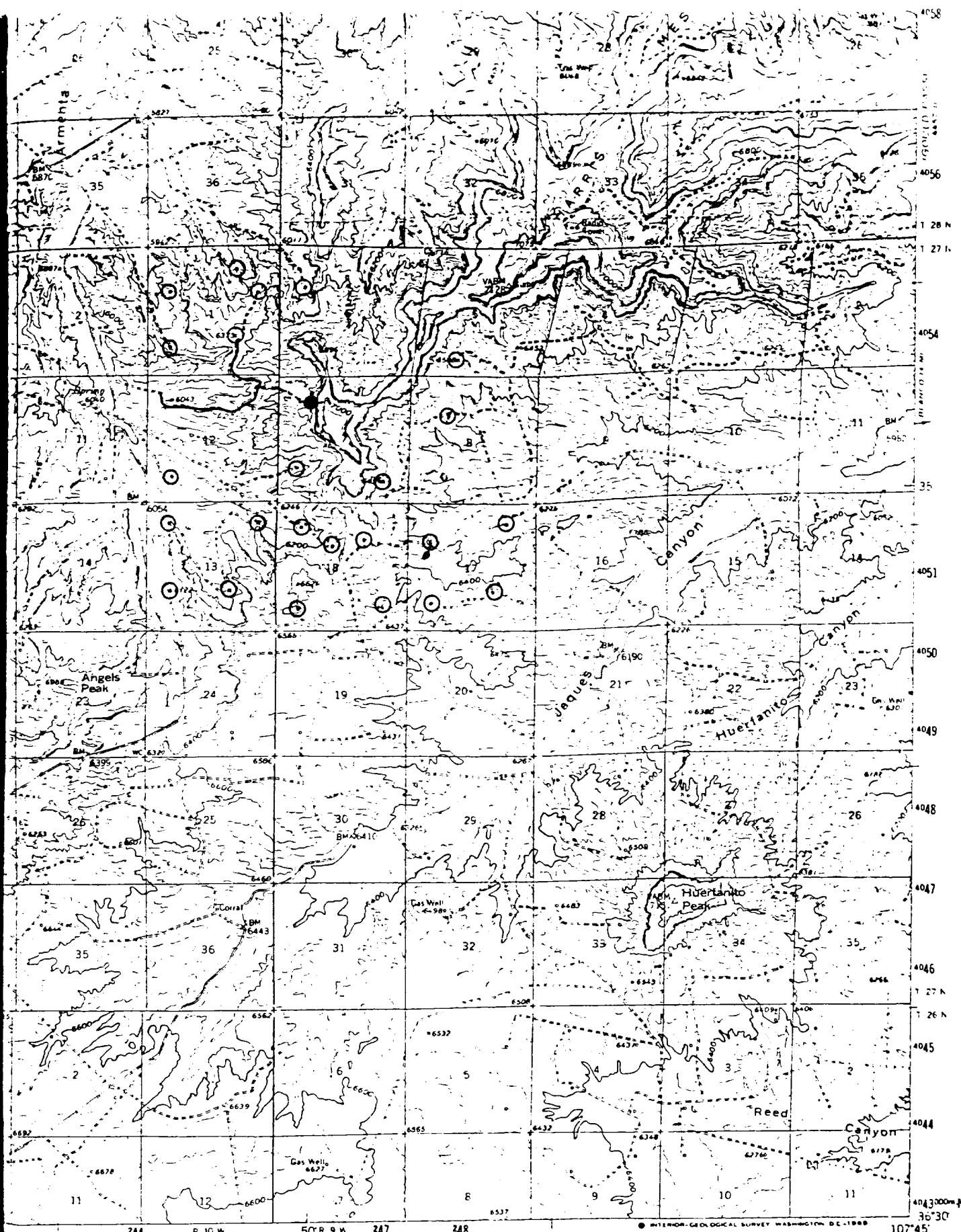
Mr. Ross Lankford will be Southland Royalty Company's field representative supervising these operations.

Yours truly,

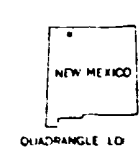
L. O. Van Ryan  
District Production Manager

LOVR/dg





Vertical 40 Feet  
Sea Level



QUADRANGLE 10

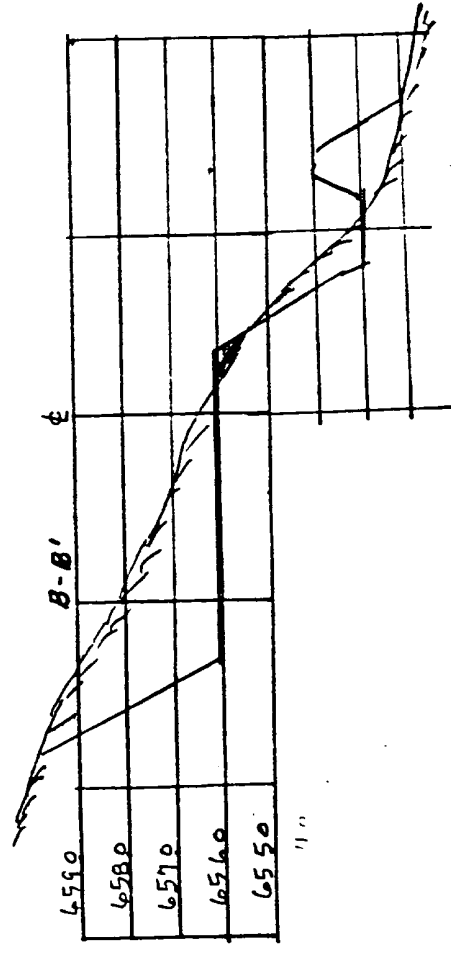
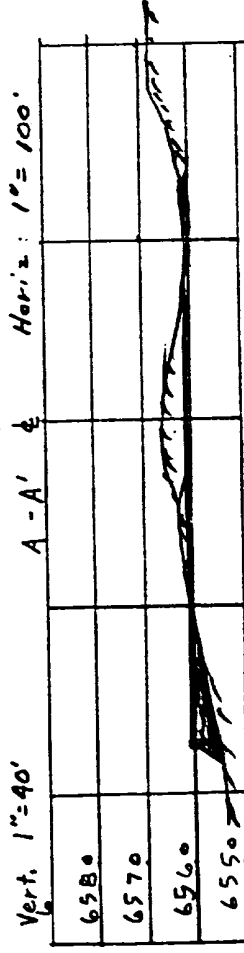
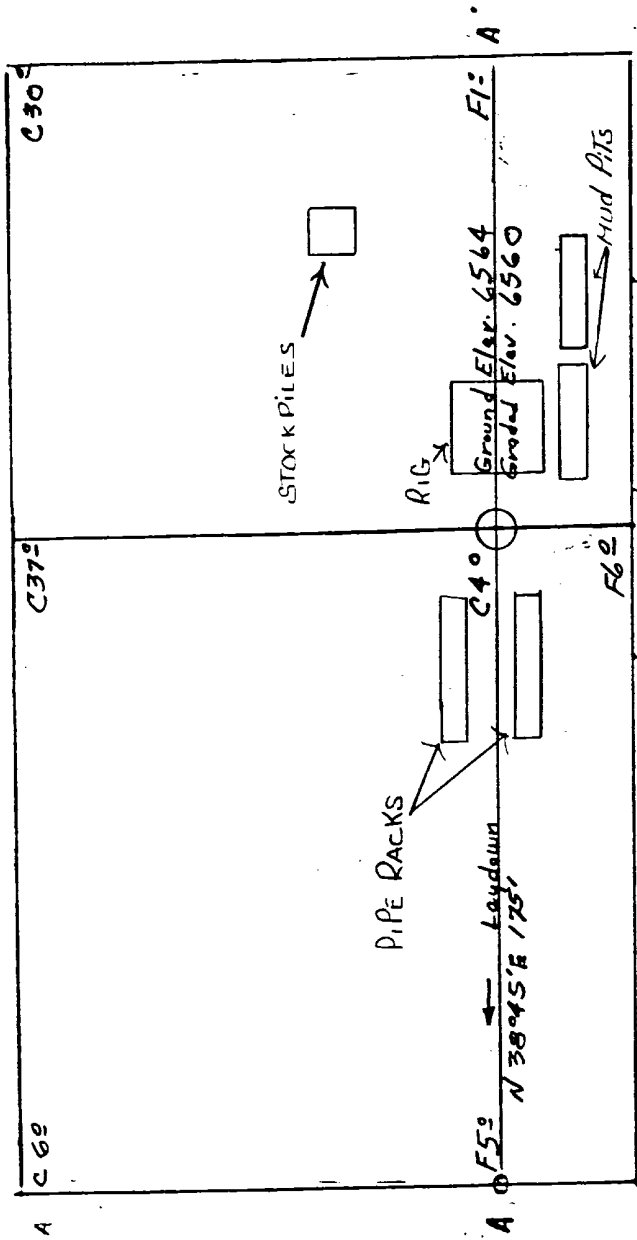
ROAD CLASSIFICATION

- PROPOSED LOCATION \*
- EXISTING LOCATIONS ○
- PROPOSED ROADS - - -
- EXISTING ROADS —

Vicinity Map for  
SOUTHLAND ROYALTY COMPANY #11E HANKS  
1345'FNL 750'FEL Sec 7-T27N-R9W  
SAN JUAN COUNTY, NEW MEXICO

MAP ACCURACY STANDARDS  
COLORADO 80225 OR WASHINGTON, D. C. 20242  
AND SYMBOLS IS AVAILABLE ON REQUEST

SOUTHLAND ROYALTY CO. #11E HANKS  
 1345' FNL 750' FNL Sec 7-T27N-R9W San Juan County, New Mexico



Vert. 1"=40' Horiz. 1"=100'  
 C-C'


D-D'


KERR LAND SURVEYING  
 Date: 8/1/79