

# BURLINGTON RESOURCES

October 8, 2002

New Mexico Oil Conservation Division  
1000 Rio Brazos Road  
Aztec, New Mexico 87410

Re: Hardie D #1A  
O Section 12, T-28-N, R-8-W  
30-045-23851

 Gentlemen:

Attached is a copy of the allocation for the subject well that was commingled 9-26-02. DHC-150az was issued for this well.

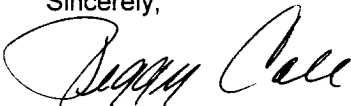
Gas:	Pictured Cliffs	5%
	Mesaverde	95%

Oil:	Pictured Cliffs	0%
	Mesaverde	100%

These percentages were calculated using rate-time reserve estimate comparisons for each respective formation.

Please let me know if you have any questions.

Sincerely,



Peggy Cole  
Regulatory Supervisor

Xc: NMOCD – Santa Fe  
Bureau of Land Management

**Hardie D 1A**  
**Unit O, Sec. 12, T28N R08W**  
**San Juan County, New Mexico**

**Production Allocation Based On Remaining Reserves As Of 07/2002**

	RR		% Allocation	
	MCF	Bbl Oil	% Gas	% Oil
Pictured Cliffs	49	0	5%	0%
Mesaverde	1,041	1,485	95%	100%
Total	1,091	1,485	100%	100%

**Gas Allocation:**

**Pictured Cliffs** (Total Pictured Cliffs Production) 49.4 MCF  
-----  
(Total Combined Production) 1,090.633 MCF = **5%**

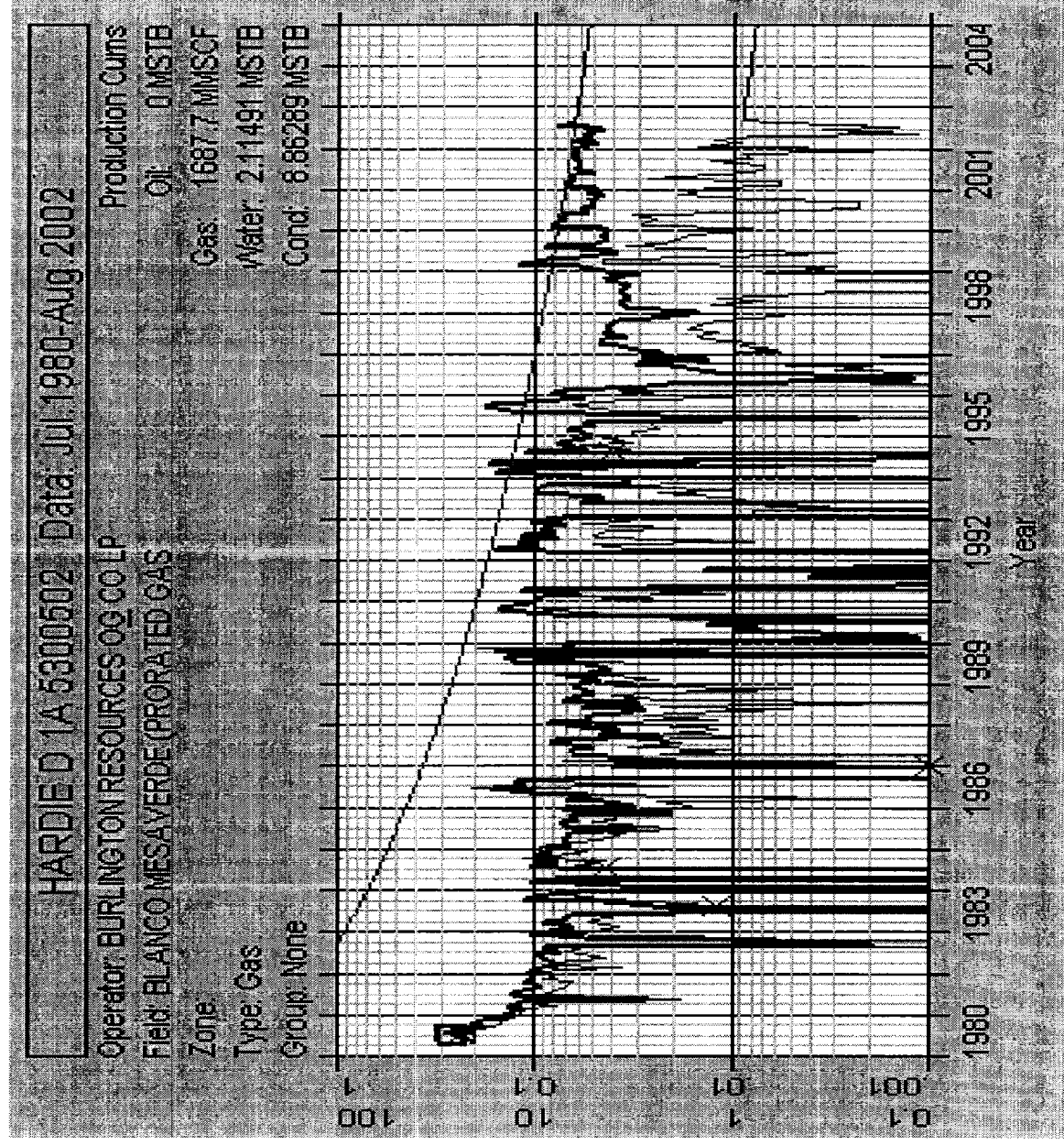
**Mesaverde** (Total Mesaverde Production) 1041.21 MCF  
-----  
(Total Combined Production) 1090.633 MCF = **95%**

**Oil Allocation:**

**Pictured Cliffs** (Total Pictured Cliffs Production) 0 Bbl Oil  
-----  
(Total Combined Production) 1,485 Bbl Oil = **0%**

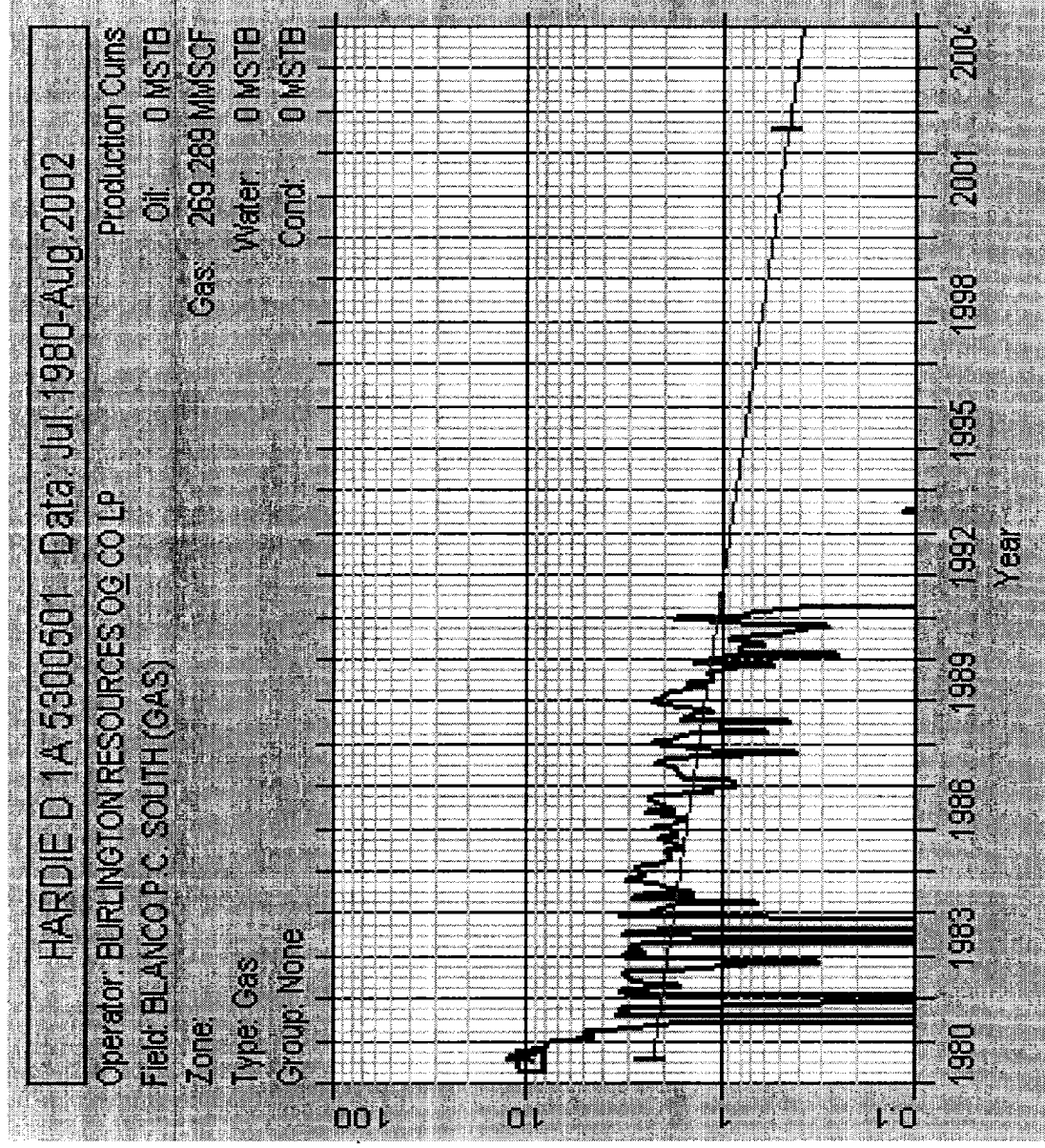
**Mesaverde** (Total Mesaverde Production) 1,485 Bbl Oil  
-----  
(Total Combined Production) 1,485 Bbl Oil = **100%**

# Hardie D 1A Mesaverde Gas & Oil Forecasts



Monthly Gas1 - MMSCF	
Cum: 1687.7 MMSCF	
PROD Gas1 Daily - MMSCF	
versus time	
Qi: 6.39187 MMSCF, Jul, 2002	
Qf: 0.457603 MMSCF, Sep, 2002	
Di: (Hyperbolic): 7.14286	
n: 0.5	
RR: 1041.21 MMSCF	
EUR: 2728.9 MMSCF	
Corr coeff: N/A	
Monthly Condensate - MSTB	
Cum: 8.86289 MSTB	
PROD Condensate Daily - MSTB	
Method: Cond = CGR * Gas	
Rate FC: Gas: PROD Gas1 Daily, Ratio F	
Qf: 0 MSTB	
RR: 1.48506 MSTB	
EUR: 10.348 MSTB	

# Hardie D 1A Pictured Cliffs Gas Forecast



Monthly Gas1 - MMSCF  
 Cum: 269,289 MMSCF  
 PRD Gas1 Daily - MMSCF  
 versus time  
 Qi: 0.456562 MMSCF, Jul, 2002  
 Qf: 0.152493 MMSCF, Aug, 2017  
 Di(Exponential): 7  
 RR: 49.4227 MMSCF  
 EUR: 318.712 MMSCF  
 Corr coeff: N/A