

UNITED STATES
DEPARTMENT OF THE INTERIOR
GEOLOGICAL SURVEY

30-045-24052

APPLICATION FOR PERMIT TO DRILL, DEEPEN, OR PLUG BACK

1a. TYPE OF WORK

DRILL ☒

DEEPEN ☐

PLUG BACK ☐

b. TYPE OF WELL

OIL
WELL ☐

GAS
WELL ☒

OTHER

SINGLE
ZONE ☐

MULTIPLE
ZONE ☐

2. NAME OF OPERATOR

Tenneco Oil Company

3. ADDRESS OF OPERATOR

720 South Colorado Boulevard, Denver, Colorado 80222

4. LOCATION OF WELL (Report location clearly and in accordance with any State requirements.)*
At surface

1275 FSL 945 FWL

At proposed prod. zone

14. DISTANCE IN MILES AND DIRECTION FROM NEAREST TOWN OR POST OFFICE*

12 miles SE of Bianco

10. DISTANCE FROM PROPOSED*

LOCATION TO NEAREST
PROPERTY OR LEASE LINE, FT.
(Also to nearest drlg. unit line, if any)

16. NO. OF ACRES IN LEASE

1200.00

17. NO. OF ACRES ASSIGNED
TO THIS WELL

5/320.00

18. DISTANCE FROM PROPOSED LOCATION*
TO NEAREST WELL, DRILLING, COMPLETED,
OR APPLIED FOR, ON THIS LEASE, FT.

19. PROPOSED DEPTH

7303

20. ROTARY OR CABLE TOOLS

Rotary

21. ELEVATIONS (Show whether DF, RT, GR, etc.)

6238 GR

22. APPROX. DATE WORK WILL START*

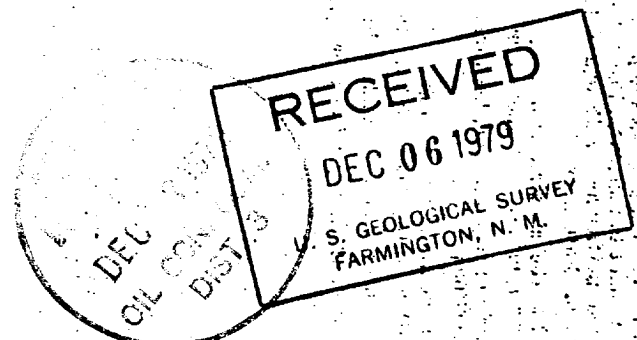
ASAP

23.

PROPOSED CASING AND CEMENTING PROGRAM

SIZE OF HOLE	SIZE OF CASING	WEIGHT PER FOOT	SETTING DEPTH	QUANTITY OF CEMENT
13 3/4"	9 5/8" New	36# K-55	300 ±	Circulate to surface
8 3/4"	7" New	23# K-55	3600 ±	Circulate to surface
6 1/4"	4 1/2" New	10.5# 11.6#	7303 ±	Circulate through liner hanger

THE GAS IS DEDICATED



IN ABOVE SPACE DESCRIBE PROPOSED PROGRAM: If proposal is to deepen or plug back, give data on present productive zone and proposed new productive zone. If proposal is to drill or deepen directionally, give pertinent data on subsurface locations and measured and true vertical depths. Give blowout preventer program, if any.

24.

SIGNED

M. Lee Freeman

TITLE

Staff Production Analyst

DATE

December 4, 1979

(This space for Federal or State office use)

PERMIT NO.

APPROVAL DATE

APPROVED BY

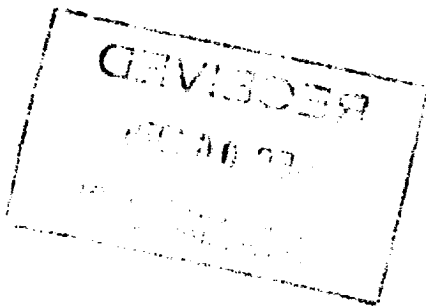
TITLE

DATE

CONDITIONS OF APPROVAL, IF ANY:

*See Instructions On Reverse Side

NMOC



OIL CONSERVATION DIVISION

STATE OF NEW MEXICO
ENERGY AND MINERALS DEPARTMENTP. O. BOX 2088
SANTA FE, NEW MEXICO 87501Form C-107
Revised 10-1-78

All distances must be from the outer boundaries of the Section.

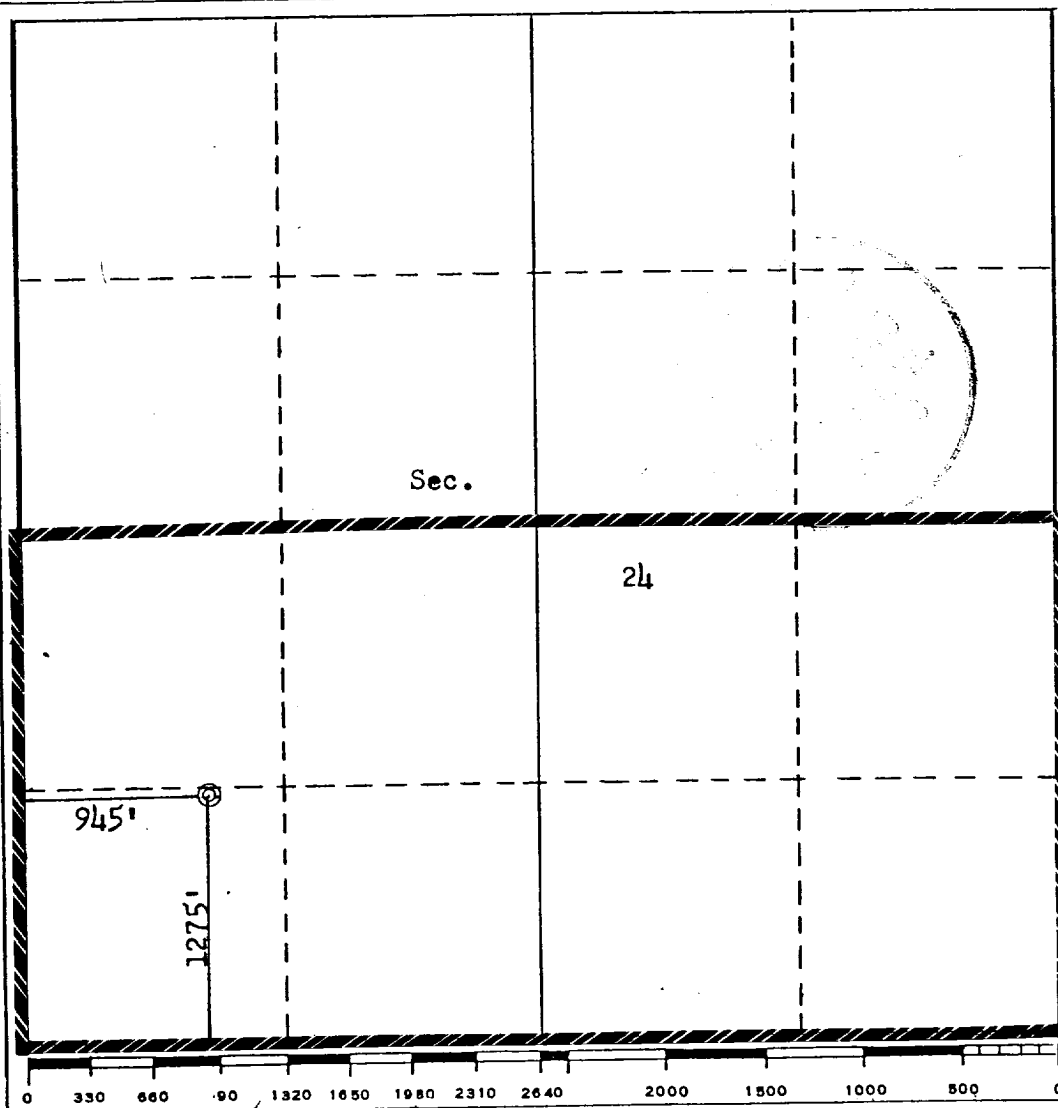
Operator TENNECO OIL COMPANY			Lease RUSSELL		Well No. 2
Unit Letter M	Section 24	Township 28N	Range 8W	County San Juan	
Actual Footage Location of Well: 1275 feet from the South line and 945 feet from the West line					
Ground Level Elev. 6238	Producing Formation Dakota		Pool Dakota Basin	Dedicated Acreage: 320.00 Acres	

1. Outline the acreage dedicated to the subject well by colored pencil or hatchure marks on the plat below.
2. If more than one lease is dedicated to the well, outline each and identify the ownership thereof (both as to working interest and royalty).
3. If more than one lease of different ownership is dedicated to the well, have the interests of all owners been consolidated by communitization, unitization, force-pooling, etc?

☐ Yes ☐ No If answer is "yes," type of consolidation _____

If answer is "no," list the owners and tract descriptions which have actually been consolidated. (Use reverse side of this form if necessary.) _____

No allowable will be assigned to the well until all interests have been consolidated (by communitization, unitization, forced-pooling, or otherwise) or until a non-standard unit, eliminating such interests, has been approved by the Commission.



CERTIFICATION

I hereby certify that the information contained herein is true and complete to the best of my knowledge and belief.

Name

Martin A. Thurman

Position

Staff Production Analyst

Company

Tenneco Oil Company

Date

12-4-79

I hereby certify that the well location shown on this plat was plotted from field notes of actual surveys made by me or under my supervision, and that the same is true and correct to the best of my knowledge and belief.

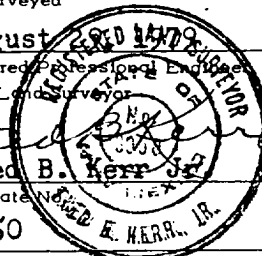
Date Surveyed

August 1979

Registered Professional Engineer
and/or Land Surveyor*Fred B. Kerr Jr.*

Certificate No. 3950

3950



TENNECO OIL COMPANY

PROGNOSIS TO DRILL AND COMPLETE

DIVISION: Rocky Mountain

DATE: August 6, 1979

LEASE: Russell

WELL NO.: 2

LOCATION: 1275 FS 945 FWL
Section 24, T 28N, R 8W
San Juan County, New Mexico

FIELD: Basin Dakota

ESTIMATED ELEVATION: 6240'

ESTIMATED TOTAL DEPTH: 7303'

PROJECTED HORIZON: Dakota

DRILLING, CASING AND CEMENT PROGRAM:

- (1) MIRURT.
- (2) Drill a 13-3/4" hole to 300+. Run 9 5/8", 36#, K-55, ST&C casing to T.D. and cement to surface. Use 2% CaCl₂ in cement.
- (3) Cut off casing and weld on casing head. Pressure test weld to 1000 psi. NUBOP's and manifold. Pressure test casing, BOP's and manifold to 1000 psi for 30 minutes.
- (4) Drill out shoe and reduce hole to 8 3/4". Drill 8 3/4" hole to 3600+. Run 7", 23#, K-55, ST&C casing to T.D. and cement to surface. (Set 7" 200-300' into Lewis shale.)
- (5) Land casing is slips and cut off. Install drilling spool on casing head. Install rotating head, manifold and flare line. Pressure test blind rams, manifold and casing to 1000 psi for 15 minutes. Pick up drilling assembly and 3 1/2" drill
- (6) Drill out of 7" with 6 1/4" bit. Drill to within 5' of shoe and displace water with Nitrogen. Drill 5' of formation and blow with gas until well dusts. Drill to TD.
- (7) Log the hole dry as directed by the wellsite geological engineer and gauge the natural flow from the Dakota.
- (8) If productive, run 4 1/2" casing to T.D. as per casing design. Cement in one stage. Bring cement to above Mesaverde zone.
- (9) If nonproductive, plug and abandon as per U.S.G.S. requirements.

ESTIMATED FORMATION TOPS:

SURFACE - San Jose

OJO Alamo	1788' (water)	Mancos	5216'
Pictured Cliffs	2716' (gas)	Gallup	6078' (oil/gas)
Cliffhouse	4461' (gas)	Greenhorn	6928'
Menefee	4526' (gas)	Dakota	7019'
Point Look Out	4988' (gas)		

No abnormal temperatures, pressures or other geologic hazards are expected.

DRILLING MUD PROGRAM:

0 - 250' Native solids. Use sufficient viscosity to clean hole and run surface casing.

250' - 3,000' Low Solids. Use sufficient viscosity to clean hole and run intermediate casing.

3,000' - TD Gas or air/air mist.

CORING AND TESTING PROGRAM:

No cores or DST's are anticipated.

DEVIATION SURVEYS: 0 - 250' - 2° Max.
250' - 3,500' - 3° Max.
3,500' - TD - 5° Max.

1. Survey surface hole at 100' intervals. Maximum allowable deviation at (1° per 100')
2. FROM SURFACE TO TOTAL DEPTH DEVIATION SURVEYS MUST BE TAKEN EVERY 500' OR EACH TRIP WHICHEVER IS FIRST. This may entail running the TOTCO on wireline. Record each survey on the AAODC Drilling Report Sheet. Maximum allowable change in deviation is 1° per 100'.

SAMPLES:

30' - 2,500' - 3,000'. Insure 300 into Lewis shale.

WELL SURVEYS:

Induction - Gamma Ray
Density - Gamma Ray - Caliper

BOP: 10" x 900 series Double Ram Preventor w/closing unit.

PREVENTORS MUST BE CHECKED FOR OPERATION EVERY 24 HOURS, AND THE CHECK MUST BE RECORDED ON THE AAODC DRILLING REPORT SHEET.

REPORTS

Drilling reports for the past 24 hours will include depth, footage, time distribution, activity breakdown, mud properties, bit record, bottom hole assembly, daily and cumulative mud costs, plus any other pertinent information; will be called into Tenneco Oil Company, Denver, Colorado between 7:30 A.M. and 8:00 A.M.

1. 303-758-7130 (office) - Don Barnes
303-758-7287 - Don Barnes private line - Monday-Friday (before 7:45 A.M.)
2. 303-936-0704 (home) - Don Barnes - weekends and holidays
3. 303-424-1269 (home) - John Owen - if Don Barnes not available

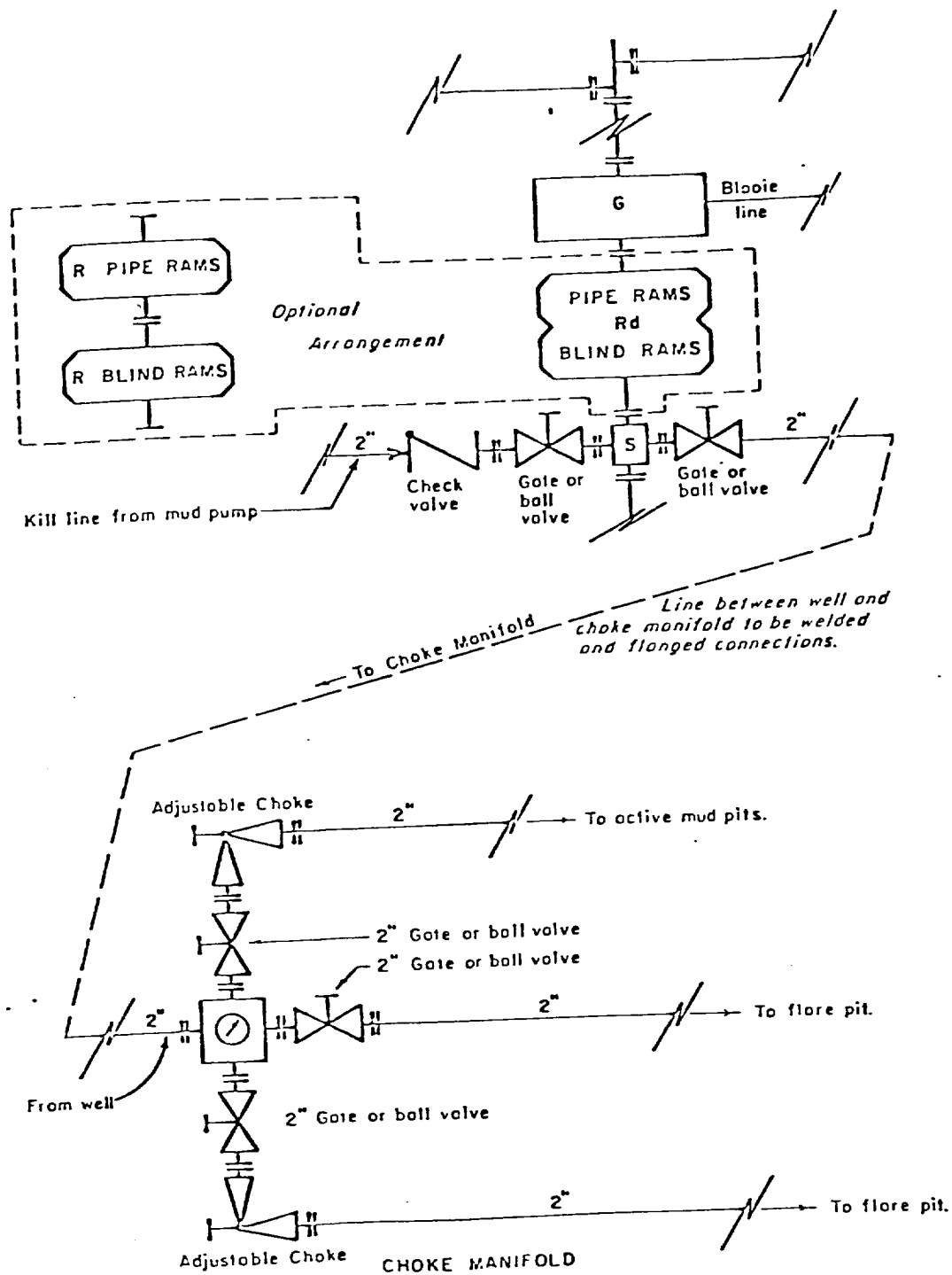
The yellow sheet of the IADC Report to be filled out completely, the original copy of the drilling time recorder, and copies of any invoices from this well signed and received for Tenneco Oil Company will be mailed daily to:

TENNECO OIL COMPANY
PENTHOUSE
720 SOUTH COLORADO BOULEVARD
DENVER, COLORADO 80222

ATTENTION: DRILLING DEPARTMENT

In case of an emergency, notify the following:

1. Mr. Don Barnes, Division Drilling Engineer - 303-936-0704.
2. Mr. John Owen, Project Drilling Engineer - 303-424-1269.
3. Mr. Mike Lacey, Division Production Manager - 303-979-0509.



All equipment to be 3,000 psi working pressure except as noted.

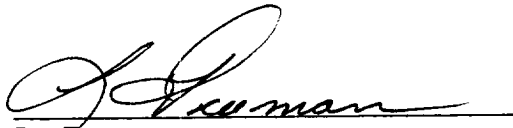
- Rd Double ram type preventer with two sets of rams.
- R Single ram type preventer with one set of rams.
- S Drilling spool with side outlet connections for choke and kill lines.
- G Rotating head 150 psi working pressure minimum

ARRANGEMENT C

TENNECO OIL COMPANY
 ROCKY MOUNTAIN DIVISION
 REQUIRED MINIMUM
 BLOWOUT PREVENTER AND
 CHOKE MANIFOLD

1. Existing Road - Please refer to Map No. 1 which shows the existing roads. New roads which will be required have been marked on this map. All existing and new roads will be properly maintained during the duration of this project.
2. Planned Access Roads - Please refer to Map No. 1. The grade of the access roads will be consistent with that of the local terrain. The road surface will not exceed twenty feet (20') in width. Upon completion of the project, the access road will be adequately drained to control soil erosion. Drainage facilities may include ditches, water bars, culverts or any other measure deemed necessary by trained Company personnel to insure proper drainage. Gates and/or cattleguards will be installed if necessary.
3. Location of Existing Wells - Please refer to Map No. 2.
4. Location of Tank Batteries, Production Facilities, and Production Gathering and Service Lines - Please refer to Maps No. 1 and No. 2. Map No. 2 shows the existing roads and new proposed access roads. All known production facilities are shown on these two maps.
5. Location and Type of Water Supply - Water for the proposed project will be obtained from a private source.
6. Source of Construction Materials - No additional materials will be required to build either the access road or the proposed location.
7. Methods of Handling Waste Materials - All garbage and trash materials will be put into a burn pit shown on the attached Location Plat No. 1. When clean-up operations are begun on the proposed project, the burn pit with its refuse will be buried to a depth of at least three feet (3'). A latrine, the location of which is also shown on Plat No. 1. will be provided for human waste. If large amounts of liquids are left in the reserve pit after completion of the project, the pit will be fenced until the liquids have had adequate time to dry. The location clean-up will not take place until such time as the reserve pit can be properly covered over to prevent run-off from carrying any of these materials into the watershed. No earthen pit will be located on natural drainage; all earthen pits will be so constructed as to prevent leakage from occurring.

8. Ancillary Facilities - No camps or airstrips will be associated with this project.
9. Wellsite Layout - Please refer to the attached Plat No. 1.
10. Plans for Restoration of the Surface - After completion of the proposed project the location will be cleaned and leveled. The location will be left in such a condition that will enable reseeding operations to be carried out. Seed mixture as designated by the responsible government agency will be used. The reseeding operation will be performed during the time period set forth by the regulatory body. The location production equipment will be painted as designated by the responsible government agency.
11. Other Information - on a broken terrace with easterly drainage, alluvial surface deposits and sandstone outcrops. The soil is rocky, clayey sand. The principal vegetation is juniper, pinon, sage, wolfberry, snakeweed, bitterbrush, mormon tea, cactus, and various grasses.
12. Operator's Representative -
13. Certification - I hereby certify that I, or persons under my direct supervision, have inspected the proposed drillsite and access route; that I am familiar with the conditions which presently exist; that the statements mad in this plan are, to the best of my knowledge, true and correct; and that the work associated with the operations proposed herein will be performed by El Paso Natural Gas Company and its contractors and sub-contractors in conformity with this plan and the terms and conditions under which it is approved.


L. Freeman
Staff Production Analyst

TENNECO OIL COMPANY

CALCULATION SHEET

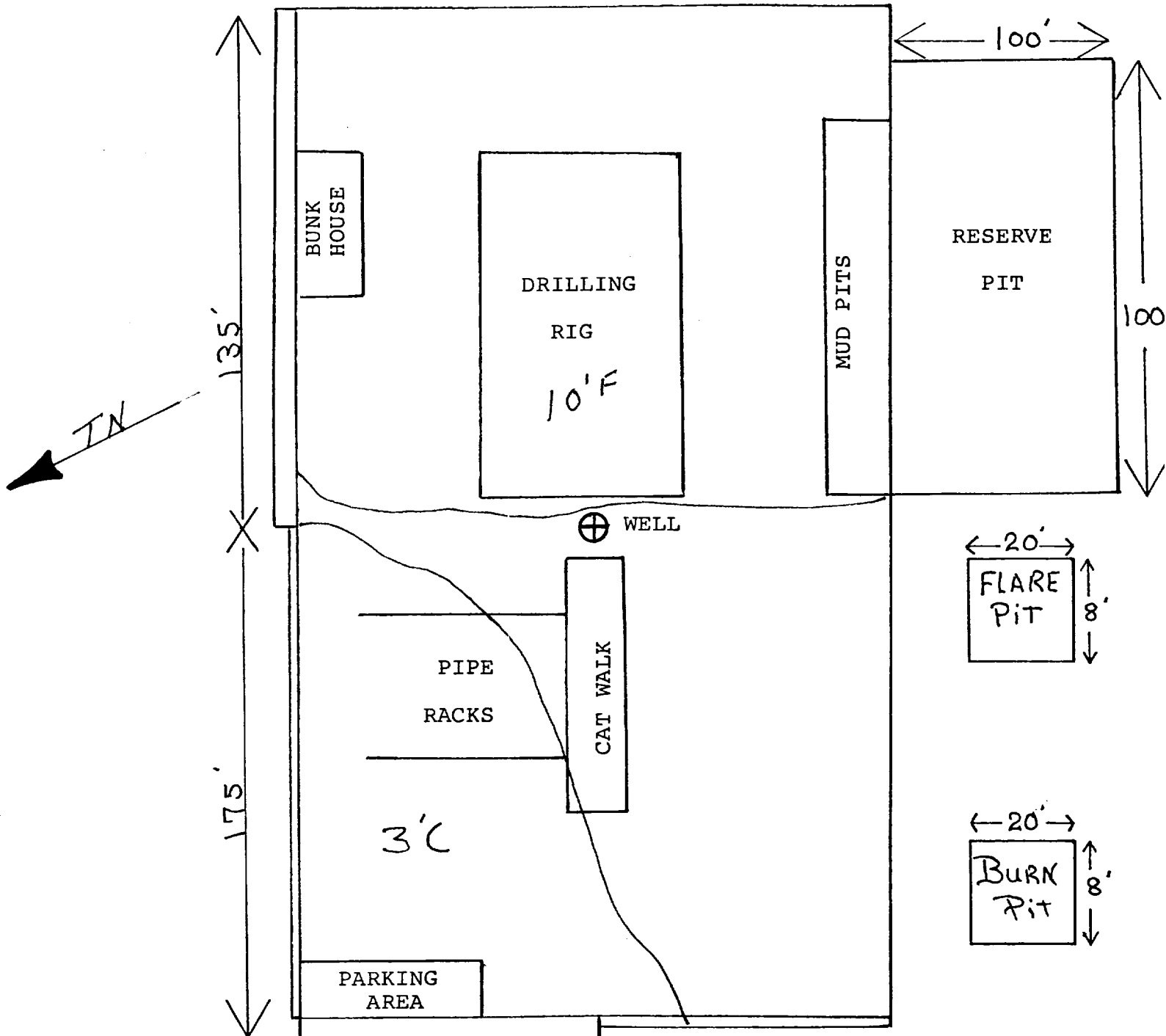
EXHIBIT

COMPANY

SUBJECT DRILLING WELL SITE LAYOUT *Russell #2*

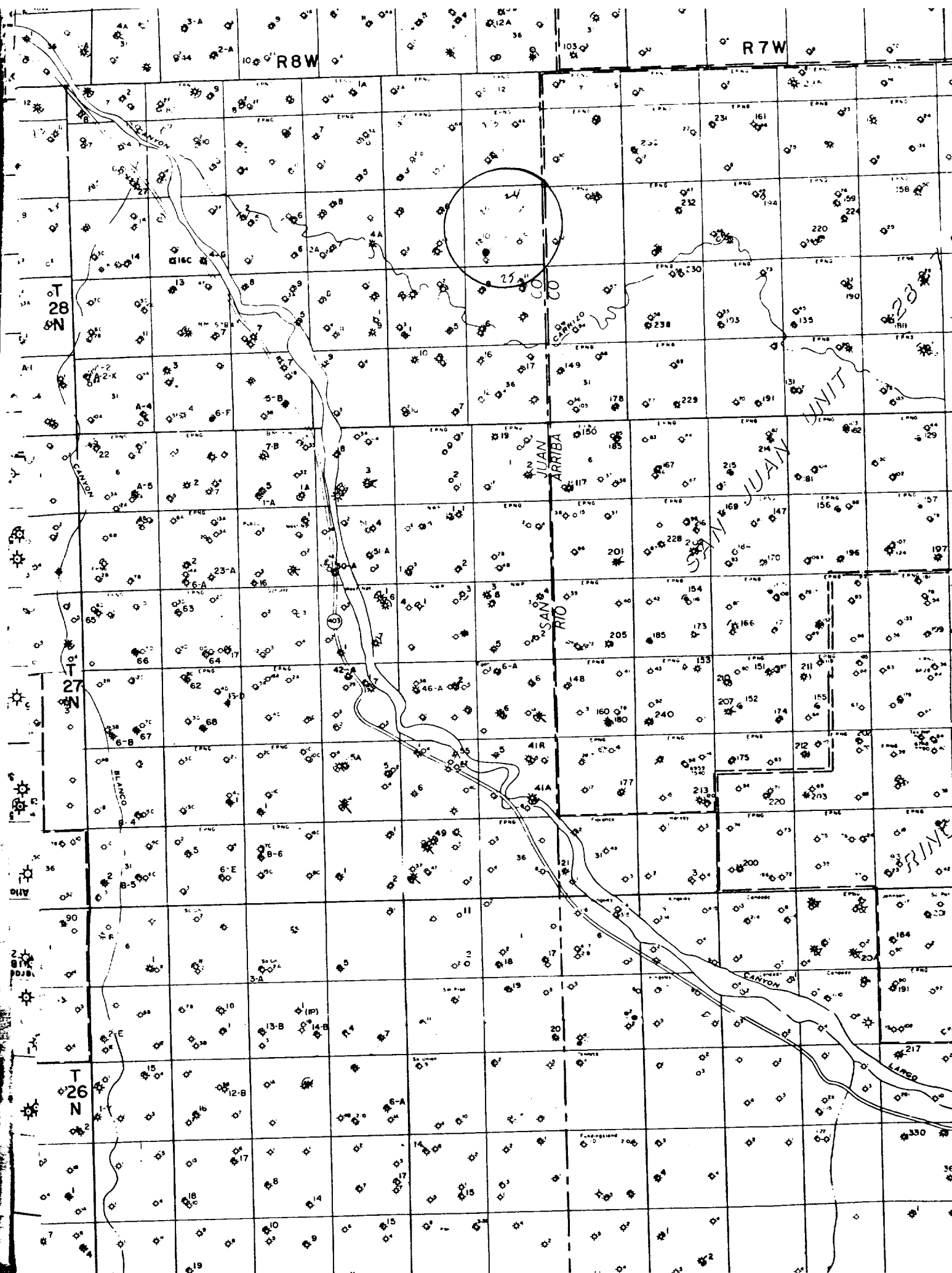
LOCATION *1275 FNL 945 FNL SEC 24, T28N R8W*

DATE *12/4/79*



The NW Edge is Adjacent to an existing 100' Location. No New Road Construction





R8W

R7W

T 28 N

T 27 N

T 26 N

SAN JUAN UNIT

28

35

CANYON

330