

NEW MEXICO OIL CONSERVATION COMMISSION
WELL LOCATION AND ACREAGE DEDICATION PLAT

Form C-101
Supersedes C-128
Effective 1-1-65

All distances must be from the outer boundaries of the Section.

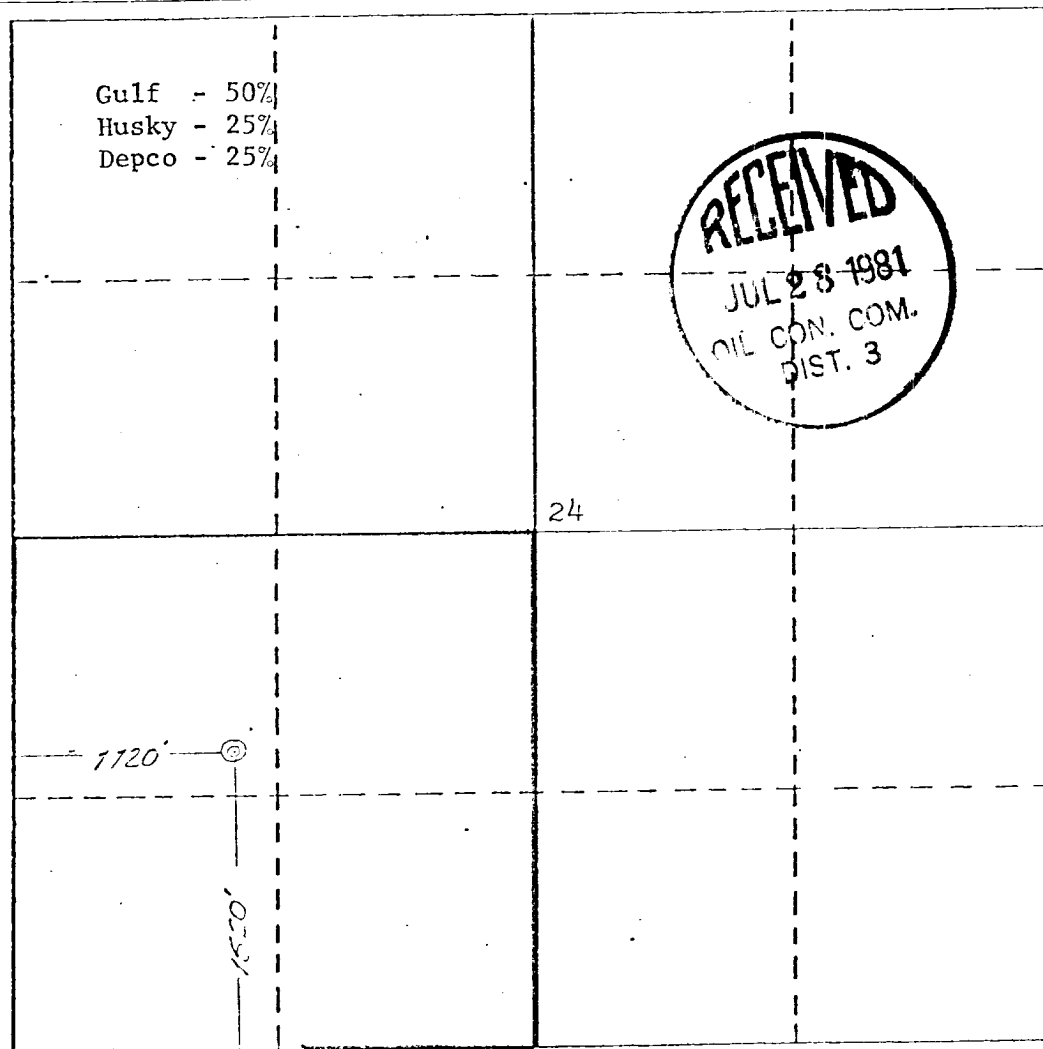
Operator GULF OIL CORPORATION			Lease SCOTT E FEDERAL COM		Well No. 16
Unit Letter L	Section 24	Township 27 NORTH	Range 11 WEST	County SAN JUAN	
Actual Footage Location of Well: 1520 feet from the SOUTH line and 1120 feet from the WEST line					
Ground Level Elev. 6247	Producing Formation West Kutz		Pool West Kutz Pictured Cliffs	Dedicated Acreage: 160 Acres	

1. Outline the acreage dedicated to the subject well by colored pencil or hatchure marks on the plat below.
2. If more than one lease is dedicated to the well, outline each and identify the ownership thereof (both as to working interest and royalty).
3. If more than one lease of different ownership is dedicated to the well, have the interests of all owners been consolidated by communitization, unitization, force-pooling, etc?

☒ Yes ☐ No If answer is "yes," type of consolidation Communitization

If answer is "no," list the owners and tract descriptions which have actually been consolidated. (Use reverse side of this form if necessary.)

No allowable will be assigned to the well until all interests have been consolidated (by communitization, unitization, forced-pooling, or otherwise) or until a non-standard unit, eliminating such interests, has been approved by the Commission.



CERTIFICATION

I hereby certify that the information contained herein is true and complete to the best of my knowledge and belief.

R. D. Pitre

Name

R. D. Pitre

Position

Area Engineer

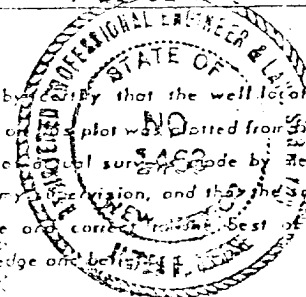
Company

Gulf Oil Corporation

Date

7-27-81

I hereby certify that the well location shown on this plat was located from field notes of actual survey made by me or under my supervision, and that the same is true and correct to the best of my knowledge and belief.



Date Surveyed

June 27, 1980

Registered Professional Engineer and/or Land Surveyor

James P. Leese
James P. Leese

Certificate No.

1463

