

District I  
P.O. Box 1980, Hobbs, NM

State of New Mexico  
Energy, Minerals and Natural Resources Department

SUBMIT 1 COPY TO  
APPROPRIATE  
DISTRICT OFFICE  
AND 1 COPY TO  
SANTA FE OFFICE

District II  
District III  
District IV  
District V  
District VI  
District VII  
District VIII  
District IX  
District X  
District XI  
District XII  
District XIII  
District XIV  
District XV  
District XVI  
District XVII  
District XVIII  
District XIX  
District XX  
District XXI  
District XXII  
District XXIII  
District XXIV  
District XXV  
District XXVI  
District XXVII  
District XXVIII  
District XXIX  
District XXX  
District XXXI  
District XXXII  
District XXXIII  
District XXXIV  
District XXXV  
District XXXVI  
District XXXVII  
District XXXVIII  
District XXXIX  
District XL  
District XLI  
District XLII  
District XLIII  
District XLIV  
District XLV  
District XLVI  
District XLVII  
District XLVIII  
District XLIX  
District L  
District LI  
District LII  
District LIII  
District LIV  
District LV  
District LVI  
District LVII  
District LVIII  
District LIX  
District LX  
District LXI  
District LXII  
District LXIII  
District LXIV  
District LXV  
District LXVI  
District LXVII  
District LXVIII  
District LXIX  
District LXX  
District LXXI  
District LXXII  
District LXXIII  
District LXXIV  
District LXXV  
District LXXVI  
District LXXVII  
District LXXVIII  
District LXXIX  
District LXXX  
District LXXXI  
District LXXXII  
District LXXXIII  
District LXXXIV  
District LXXXV  
District LXXXVI  
District LXXXVII  
District LXXXVIII  
District LXXXIX  
District XL

OIL CONSERVATION DIVISION  
P.O. Box 2088  
Santa Fe, New Mexico 87504-2088

(Revised 3/9/94)

APR 08 1997

## PIT REMEDIATION AND CLOSURE REPORT

Operator: BONNEVILLE FUELS CORPORATION Telephone: 303-863-1555

Address: 1660 Lincoln Street, Suite 1800, Denver, CO 80264

Facility Or: SCOTT "E" FEDERAL COM #16

Well Name

Location: Unit or qtr/qtr Sec SW L Sec 24 T 27 R 11 County SAN JUAN

Pit Type: separator XX Dehydrator      other     

Land Type: BLM XX, State     , Fee     , other     

Pit Location: Pit dimensions: length 23, width 27, depth 8  
(Attach diagram)

Reference: wellhead     , other      See Attached

Footage from reference:     

Direction from reference:      Degrees      East North       
of  
     West South     

Depth To Ground Water: (vertical distance from contaminants to seasonal high water elevation of ground water)

Less than 50 feet	(20 points)
50 feet to 99 feet	(10 points)
Greater than 100 feet	(0 points) <u>0</u>

Wellhead Protection Area: (Less than 200 feet from a private domestic water source, or; less than 1000 feet from all other water sources)

Yes	(20 points)
No	(0 points) <u>0</u>

Distance To Surface Water: (Horizontal distance to perennial lakes, ponds, rivers, streams, creeks, irrigation canals and ditches)

Less than 200 feet	(20 points)
200 feet to 1000 feet	(10 points)
Greater than 1000 feet	(0 points) <u>0</u>

RANKING SCORE (TOTAL POINTS): 0

Date Remediation Started: 9/7/94 Date Completed: 9/7/94

Remediation Method: Excavation XX Approx. cubic yards 184  
(Check all appropriate sections) Landfarmed \_\_\_\_\_ Insitu Bioremediation \_\_\_\_\_  
other \_\_\_\_\_

Remediation Location: Onsite XX Offsite \_\_\_\_\_  
(ie. landfarmed onsite, name and location of offsite facility)

General Description Of Remedial Action: Contamination was remediated by dilution and aeration. Remediated soil was backfilled into remediated pit. A below grade fiberglass tank was emplaced in the same location as old earthen pit as per NMOC guidelines. Pit was sampled approximately 1-1/2 years after initial remediation to supply BTEX values for bottom of pit and backfill composite. Sampling was done with a truck mounted Geoprobe which auger drilled to just below the old TD of the remediated pit. Several samples were taken off the auger while drilling to TD and were taken as representative of the backfill. The TD sample was either taken off the raised auger or with a split spoon.

Ground Water Encountered: No XX Yes \_\_\_\_\_ Depth \_\_\_\_\_

Final Pit: sample location See Attached

Closure Sampling:  
(if multiple samples, attach sample results and diagram of sample locations and depths)  
sample depth 8'; 3.5" sandstone

sample date 9/7/94; 5-22-96 Sample time 11:45:00; 10:35

Sample Results

Benzene (ppm) \_\_\_\_\_

Total BTEX (ppm) \_\_\_\_\_

Field headspace (ppm) Composite and TD 3.5' (PID, 39.2)

TPH @ 8' = 1,970; Backfill = 865, 883, 842, 793

Ground Water Sample: Yes \_\_\_\_\_ No XX (If yes, attach sample results)

I HEREBY CERTIFY THAT THE INFORMATION ABOVE IS TRUE AND COMPLETE TO THE BEST OF MY KNOWLEDGE AND BELIEF

DATE 10/19/96

SIGNATURE

RJK  
PRINTED NAME  
AND TITLE

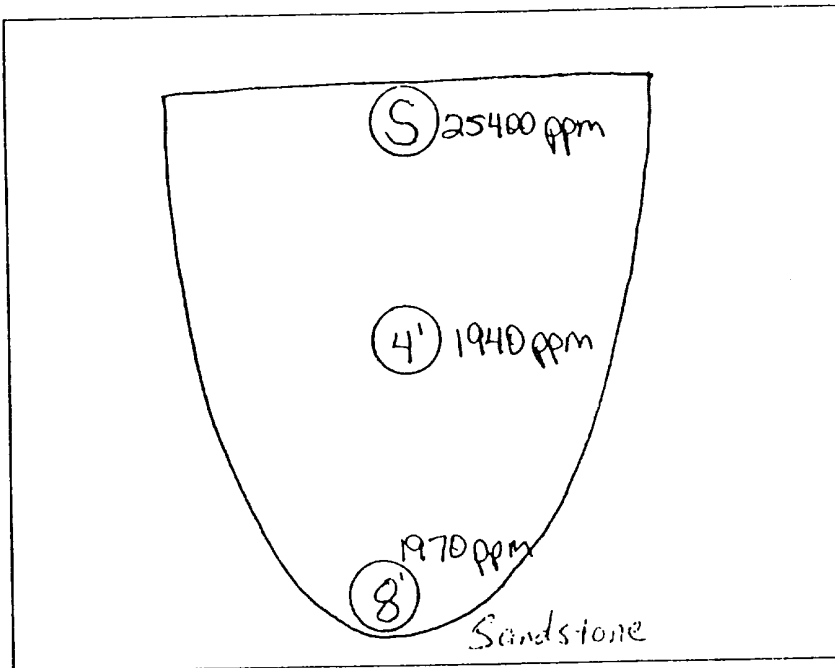
James O. Cable  
Vice President Operations

# FINAL PIT CLOSURE SAMPLING REPORT

Operator: BONNEVILLE FUELS CORPORATION Telephone: (505) 632-9876  
 Address: 310 NORTH FIRST STREET, BLOOMFIELD, NM 87413  
 Facility Or: SCOTT "E" FEDERAL COM. #16  
 Well Name \_\_\_\_\_  
 Location: Unit or Qtr/Qtr Sec SW Sec 24 T 27 R 11 County SAN JUAN

Depth	TPH
Surface	25400 ppm
2 ft.	ppm
4 ft.	1940 ppm
6 ft.	ppm
8 ft.	1970 ppm
10 ft.	ppm
12 ft.	ppm
14 ft.	ppm
16 ft.	ppm
18 ft.	ppm
20 ft.	ppm
ft.	ppm
ft.	ppm
ft.	ppm

**SIDE VIEW**

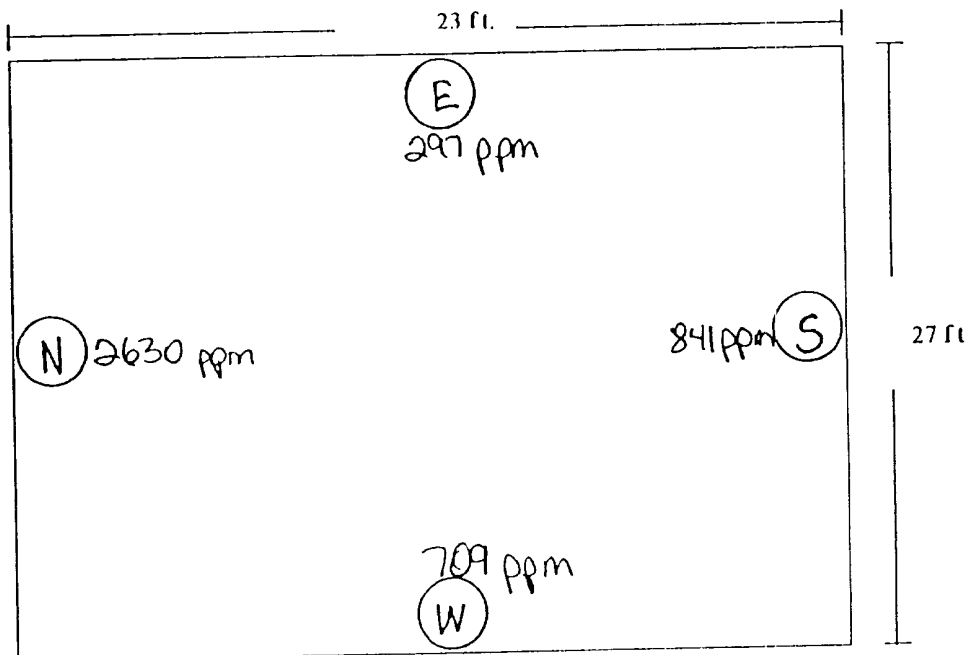
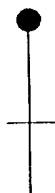


**TOP VIEW**

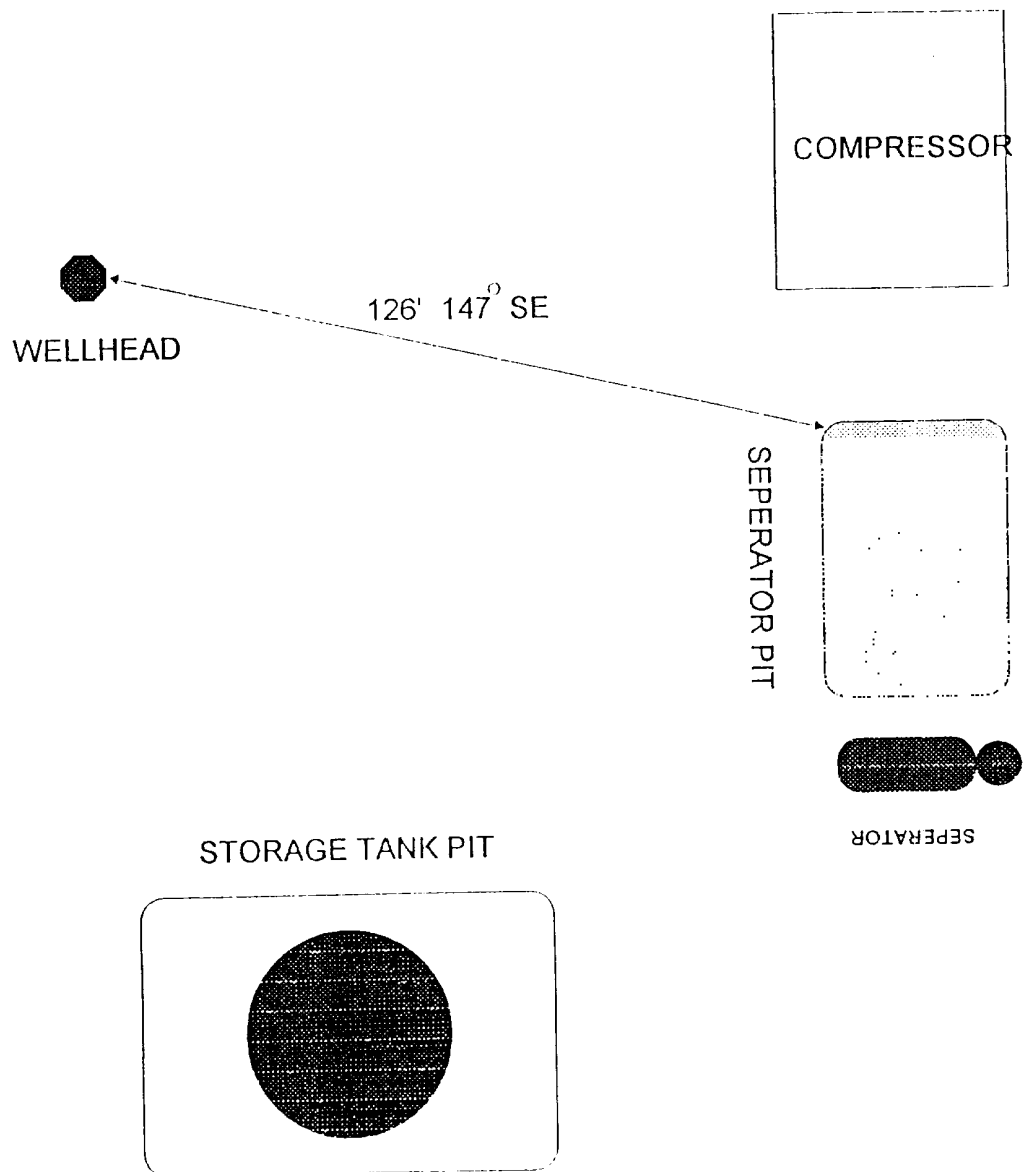
North Side	2630 ppm
East Side	297 ppm
South Side	841 ppm
West Side	709 ppm

*Compressor  
barrier*

North



BONNEVILLE FUELS CORPORATION  
SCOTT "E" FEDERAL COM #16



ON SITE TECHNOLOGIES, LTD.

P.O. BOX 2606, FARMINGTON, NM 87499

(505) 325-5667

DATE : 05-22-96

CLIENT : BONNEVILLE FUELS

SITE LOCATION: SCOTT "E" FEDERAL . # 16  
Unit L Sec. 24, T27N, R11W, NMPM  
San Juan County

CONTRACTOR : ON SITE EQUIPMENT : GEOPROBE (2" AUGER w/ Split Spoon)

ASSESSMENT SUMMARY

CO. # : BON 100-1

LOGGER : BC

JOB # : 4-1286

PAGE # : 1

START 10:00

FINISH 10:35

NOTES:

One pit assessed: Separator

Separator Composite 3.5' (PID: 39.2 Units)

TD @ Sandstone 3.5'

LAB: TEST N/A

↑  
N

COMPRESSOR

SEPARATOR  
PIT

WELLHEAD

