

UNITED STATES
DEPARTMENT OF THE INTERIOR
GEOLOGICAL SURVEY

APPLICATION FOR PERMIT TO DRILL, DEEPEN, OR PLUG BACK

1a. TYPE OF WORK

DRILL ☒DEEPEN ☐PLUG BACK ☐

b. TYPE OF WELL

OIL
WELL ☐GAS
WELL ☒

OTHER

SINGLE
ZONE ☒MULTIPLE
ZONE ☐

2. NAME OF OPERATOR

GULF OIL CORPORATION

3. ADDRESS OF OPERATOR

P. O. Box 670, Hobbs, NM 88240

4. LOCATION OF WELL (Report location clearly and in accordance with any State requirements.)*

At surface

-1520' FNL & 1850' FEL

At proposed prod. zone

14. DISTANCE IN MILES AND DIRECTION FROM NEAREST TOWN OR POST OFFICE*

Approximately 10 miles south of Bloomfield, NM

15. DISTANCE FROM PROPOSED*

LOCATION TO NEAREST
PROPERTY OR LEASE LINE, FT.
(Also to nearest drlg. unit line, if any)

16. NO. OF ACRES IN LEASE

2560

18. DISTANCE FROM PROPOSED LOCATION*

TO NEAREST WELL, DRILLING, COMPLETED,
OR APPLIED FOR, ON THIS LEASE, FT.

19. PROPOSED DEPTH

6650'

21. ELEVATIONS (Show whether DF, RT, GR, etc.)

6049' GL

23.

PROPOSED CASING AND CEMENTING PROGRAM

SIZE OF HOLE	SIZE OF CASING	WEIGHT PER FOOT	SETTING DEPTH	QUANTITY OF CEMENT
12 1/2"	8-5/8"	24#	500	400 sx - circulated
7-7/8"	4 1/2"	10.5#	6650	To be determined by caliper
				log

NOTE: See attached BOP Drawing #2

Circulating Media: 0' - 500'
500' - 4000'
4000' - 6650'

Fresh water spud mud

Fresh water

FRESH WATER OPERATIONS AUTHORIZED AS FOLLOWS:
FRESH WATER, 8.5-9.0 PPG, WITH THE FOLLOWING PROPERTIES:
VISCOSITY 32-33 cP, WEIGHT 8.5-9.0 PPG,
GENERAL REQUIREMENTS, weight 8.5-9.0 PPG:This action is subject to administrative
approval pursuant to 30 CFR 290.1

Gas is dedicated

IN ABOVE SPACE DESCRIBE PROPOSED PROGRAM: If proposal is to deepen or plug back, give data on present productive zone and proposed new productive zone. If proposal is to drill or deepen directionally, give pertinent data on subsurface locations and measured and true vertical depths. Give blowout preventer program, if any.

24.

SIGNED

C. Manilla 7-15-80

TITLE

Area Production Manager

DATE

7-14-80

(This space for Federal or State office use)

PERMIT NO.

APPROVAL DATE

APPROVED BY

TITLE

DATE

CONDITIONS OF APPROVAL, IF ANY:

*See Instructions On Reverse Side

NMCCO

NEW MEXICO OIL CONSERVATION COMMISSION
WELL LOCATION AND ACREAGE DEDICATION PLAT

Form No. 2
Supersedes Form No. 1
Effective 1-1-65

All distances must be from the outer boundary of the Section.

Owner GULF OIL CORPORATION		Lease FULLERTON FEDERAL		Well No. 46E
Well Letter B	Section 11	Township 27 NORTH	Range 11 WEST	County SAN JUAN

Actual Footage Location of Well:

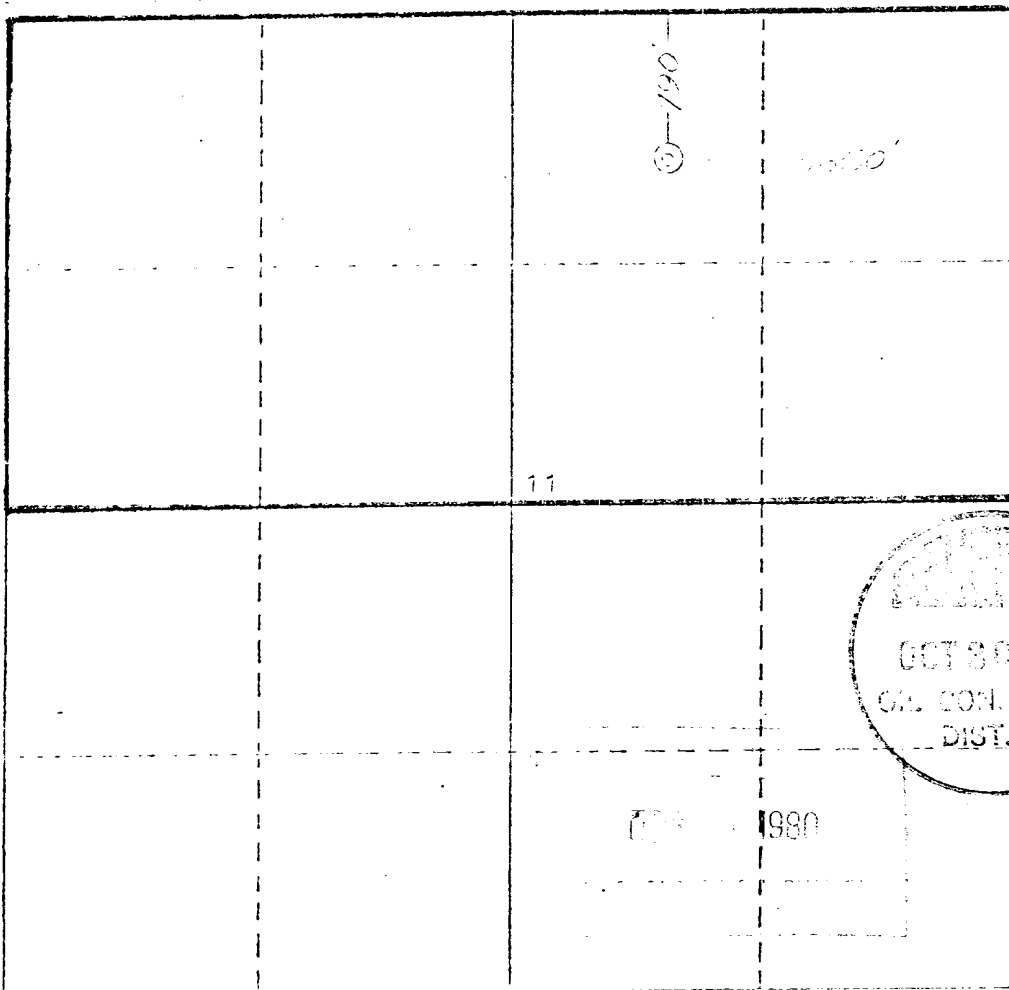
720 feet from the NORTH line	1850 feet from the EAST line
Dedicated Acreage: 6031	Dedicated Acreage: 320
Dedicated Formation Dakota	Dedicated Formation Basin Dakota

- Outline the acreage dedicated to the subject well by colored pencil or hatchure marks on the plat below.
- If more than one lease is dedicated to the well, outline each and identify the ownership thereof (both as to working interest and royalty).
- If more than one lease of different ownership is dedicated to the well, have the interests of all owners been consolidated by communization, unitization, force-pooling, etc?

☐ Yes ☐ No If answer is "yes," type of consolidation

If answer is "no," list the owners and tract descriptions which have actually been consolidated. (Use reverse side of this form if necessary.)

No allowable will be assigned to the well until all interests have been consolidated (by communization, unitization, force-pooling, or otherwise) or until a non-standard unit, eliminating such interests, has been approved by the Commission.



CERTIFICATION

I hereby certify that the information contained herein is true and complete to the best of my knowledge and belief.

R. D. Pitre

Name

R. D. Pitre

Position

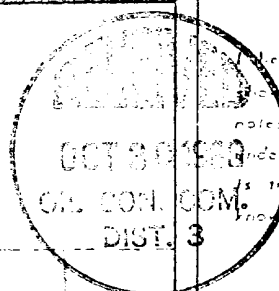
Area Engineer

Company

Gulf Oil Corporation

Date

9-24-80



I hereby certify that the information contained herein is true and complete to the best of my knowledge and belief.

Date Surveyed

September 12, 1980

Registered Professional Engineer and/or Land Surveyor

James P. Loese

Certificate No.

1463

NMOCC

UNITED STATES
DEPARTMENT OF THE INTERIOR
GEOLOGICAL SURVEY

SUBMIT IN TRIPPLICATE
(Other instructions on re-
verse side)

Form approved.
Budget Bureau No. 42-R1424.
5. LEASE DESIGNATION AND SERIAL NO.

SF-078094

SUNDRY NOTICES AND REPORTS ON WELLS

(Do not use this form for proposals to drill or to deepen or plug back to a different reservoir.
Use "APPLICATION FOR PERMIT—" for such proposals.)

1. OIL WELL <input type="checkbox"/> GAS WELL <input checked="" type="checkbox"/> OTHER <input type="checkbox"/>		6. IF INDIAN, ALLOTTEE OR TRIBE NAME
2. NAME OF OPERATOR Gulf Oil Corporation		7. UNIT AGREEMENT NAME
3. ADDRESS OF OPERATOR P. O. Box 670, Hobbs, NM 88240		8. FARM OR LEASE NAME Fullerton "A" Federal Com
4. LOCATION OF WELL (Report location clearly and in accordance with any State requirements. See also space 17 below.) At surface 790' FNL & 1850' FEL		9. WELL NO. 13
14. PERMIT NO.		10. FIELD AND POOL, OR WILDCAT Basin Dakota
15. ELEVATIONS (Show whether DF, RT, GR, etc.) 6031' GL		11. SEC., T., R., M., OR BLK. AND SURVEY OR AREA Sec 11-T27N-R11W
		12. COUNTY OR PARISH San Juan
		13. STATE NM

16. Check Appropriate Box To Indicate Nature of Notice, Report, or Other Data

NOTICE OF INTENTION TO:

TEST WATER SHUT-OFF <input type="checkbox"/>	PULL OR ALTER CASING <input type="checkbox"/>
FRACTURE TREAT <input type="checkbox"/>	MULTIPLE COMPLETE <input type="checkbox"/>
SHOOT OR ACIDIZE <input type="checkbox"/>	ABANDON* <input type="checkbox"/>
REPAIR WELL <input type="checkbox"/>	CHANGE PLANS <input type="checkbox"/>
(Other) <input type="checkbox"/>	

SUBSEQUENT REPORT OF:

WATER SHUT-OFF <input type="checkbox"/>	REPAIRING WELL <input type="checkbox"/>
FRACTURE TREATMENT <input type="checkbox"/>	ALTERING CASING <input type="checkbox"/>
SHOOTING OR ACIDIZING <input type="checkbox"/>	ABANDONMENT* <input type="checkbox"/>
(Other) <input checked="" type="checkbox"/> Location & Elevation Change	

(NOTE: Report results of multiple completion on Well Completion or Recompletion Report and Log form.)

17. DESCRIBE PROPOSED OR COMPLETED OPERATIONS (Clearly state all pertinent details, and give pertinent dates, including estimated date of starting any proposed work. If well is directionally drilled, give subsurface locations and measured and true vertical depths for all markers and zones pertinent to this work.)

Location was moved at Bureau of Land Management's request.



18. I hereby certify that the foregoing is true and correct

SIGNED RO Pith TITLE Area Engineer DATE 9-24-80

(This space for Federal or State office use)

APPROVED BY _____ TITLE _____ DATE _____
CONDITIONS OF APPROVAL, IF ANY:

NMOCC

NEW MEXICO OIL CONSERVATION COMMISSION
WELL LOCATION AND ACREAGE DEDICATION PLAT

Form C-102
Supersedes C-12
Effective 1-1-65

All distances must be from the outer boundaries of the Section.

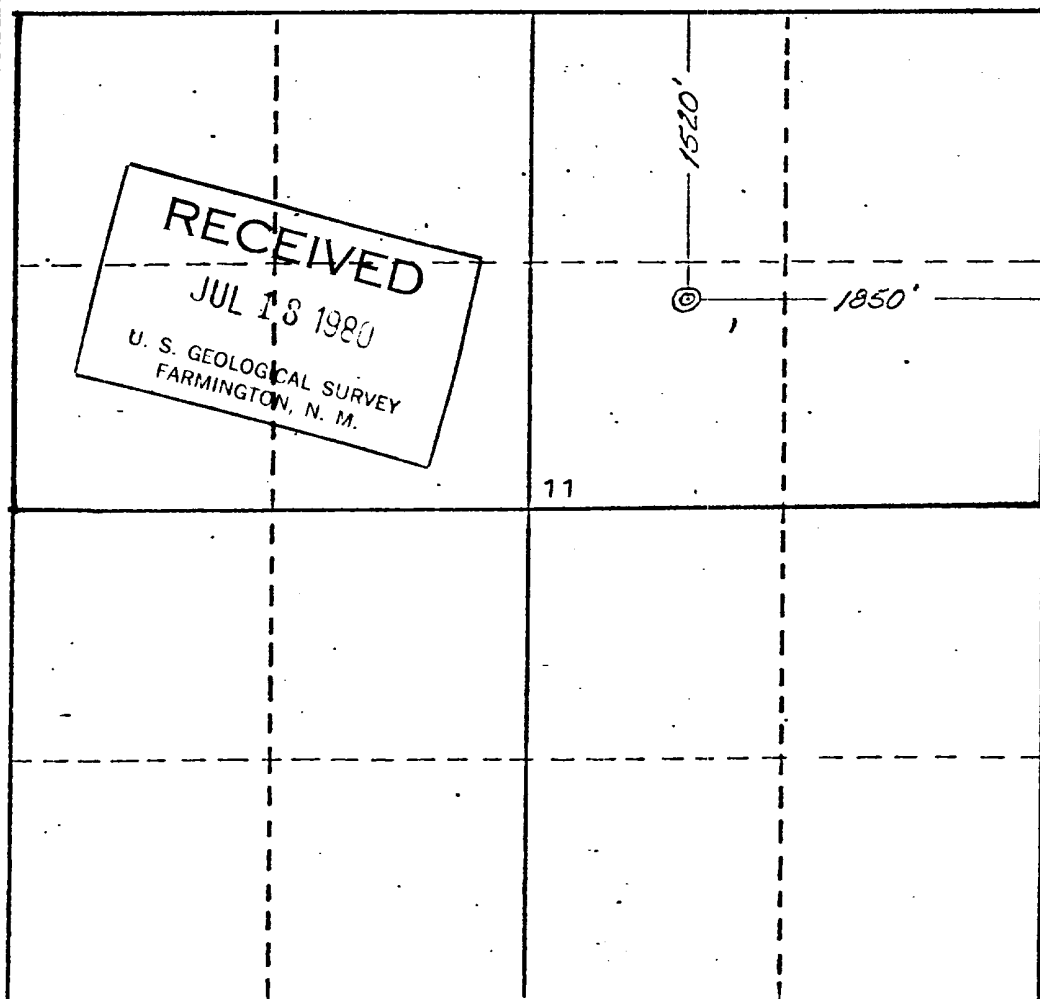
Operator GULF OIL CORPORATION			Lease FULLERTON A FEDERAL COMM		Well No. 13
Unit Letter G	Section 11	Township 27 NORTH	Range 11 WEST	County SAN JUAN	
Actual Footage Location of Well: 1520 feet from the NORTH line and 1850 feet from the EAST line					
Ground Level Elev. 6049	Producing Formation Dakota		Pool Basin Dakota		Dedicated Acreage: 320 Acres

1. Outline the acreage dedicated to the subject well by colored pencil or hachure marks on the plat below.
2. If more than one lease is dedicated to the well, outline each and identify the ownership thereof (both as to working interest and royalty).
3. If more than one lease of different ownership is dedicated to the well, have the interests of all owners been consolidated by communitization, unitization, force-pooling, etc?

☐ Yes ☐ No If answer is "yes," type of consolidation _____

If answer is "no," list the owners and tract descriptions which have actually been consolidated. (Use reverse side of this form if necessary.) _____

No allowable will be assigned to the well until all interests have been consolidated (by communitization, unitization, forced-pooling, or otherwise) or until a non-standard unit, eliminating such interests, has been approved by the Commission.

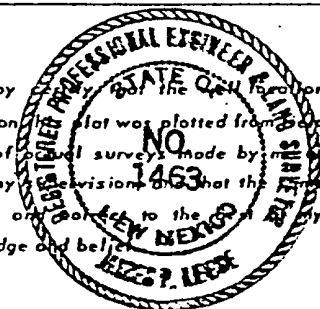


CERTIFICATION

I hereby certify that the information contained herein is true and complete to the best of my knowledge and belief.

R. C. Anderson 7-15-80
Name **R. C. ANDERSON**
Position **Area Production Manager**
Company **Gulf Oil Corporation**
Date **7-14-80**

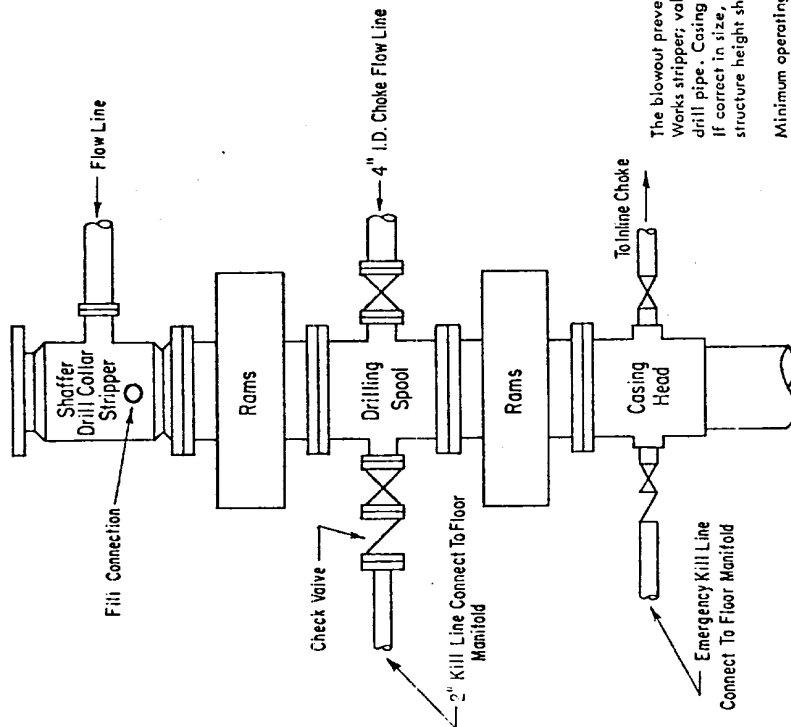
I hereby certify that the information shown on this plat was plotted from field notes of actual surveys made by me or under my supervision and that the same is true and correct to the best of my knowledge and belief.



Date Surveyed **June 26, 1980**
Registered Professional Engineer and/or Land Surveyor
James P. Leese
James P. Leese
Certificate No. **1463**

0 330 660 990 1320 1650 1980 2310 2640 2970 3300 3630 3960 4290 4620 4950 5280 5610 5940 6270 6600

ADDITIONS - DELETIONS - CHANGES SPECIFY



3000 PSI WORKING PRESSURE BLOWOUT PREVENTER HOOK-UP

The blowout preventer assembly shall consist of one blind ram preventer and one pipe ram preventer, both hydraulically operated; a Shaffer Tool Works stripper; valves; chokes and connections, as illustrated. If a tapered drill string is used, a ram preventer must be provided for each size of drill pipe. Casing and tubing rams to fit the preventers are to be available as needed. The ram preventers may be two singles or a double type. If correct in size, the flanged outlets of the ram preventer may be used for connecting to the 4-inch I.D. choke flow line and kill line. The substructure height shall be sufficient to install a rotating blowout preventer.

Minimum operating equipment for line preventers shall be as follows: (1) Pump (s), driven by a continuous source of power, capable of closing all the pressure-operated devices simultaneously within _____ seconds. The pump (s) is to be connected to a closed type hydraulic operating system. (2) When requested, accumulators with a precharge of nitrogen of not less than 750 PSI and connected so as to receive a fluid charge from the above pump (s). With the charging pump (s) shut down, the pressurized fluid volume stored in the accumulators must be sufficient to close all the pressure-operated devices simultaneously within _____ seconds; after closure, the remaining accumulator pressure shall be not less than 1000 PSI with the remaining accumulator fluid volume of at least _____ percent of the original. (3) When requested, an additional source of power, remote and equivalent, is to be available to operate the above pump (s); or there shall be an additional pump (s) operated by separate power and equal in performance capabilities.

The closing manifold shall have a separate control for each pressure-operated device. Controls are to be labeled, with control handles indicating open and closed positions. A pressure reducer and regulator must be provided if a Hydritl preventer is used. Gulf Legion No. 38 hydraulic oil, an equivalent or better, is to be used as the fluid to operate the hydraulic equipment.

The choke manifold, choke flow line, and choke lines are to be supported by metal stands and adequately anchored. The choke flow line and choke lines shall be constructed as straight as possible and without sharp bends. Easy and safe access is to be maintained to the choke manifold. All valves are to be selected for operation in the presence of oil, gas, and drilling fluids. The choke flow line valve connected to the drilling spool and all ram type preventers must be equipped with stem extensions, universal joints if needed, and hand wheels which are to extend beyond the edge of the derrick substructure. All other valves are to be equipped with handles.

Gulf Oil Exploration and Production Company

R. C. Anderson
PRODUCTION MANAGER, HOBBS AREA

July 14, 1980

P. O. Box 670
Hobbs, NM 88240

U. S. Geological Survey
P. O. Box 959
Farmington, New Mexico 87401

Gentlemen:

The following is Gulf Oil Corporation's plan for surface restoration associated with the drilling of our Fullerton "A" Federal Com #13 to be located 1520' from the north line and 1850' from the east line of Section 11, Township 27 North, Range 11 West, San Juan County, New Mexico.

After completion of drilling and/or completion operations, all equipment and other material not needed for operations will be removed. Pits will be filled and the location cleaned of all trash and junk to leave the well site in as aesthetically pleasing condition as possible. Any unguarded pits containing fluids will be fenced until they are filled.

After abandonment of the well, surface restoration will be in accordance with the agreement with the surface owner. Pits will be filled and the location will be cleaned. The pit area, well pad, and all unneeded access roads will be ripped to promote revegetation. Rehabilitation should be accomplished within ninety (90) days after abandonment.

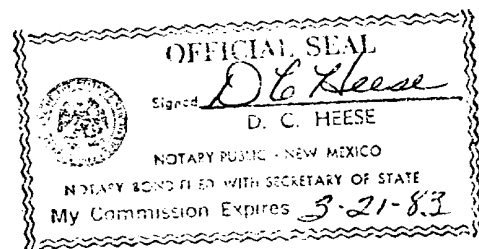
Yours very truly,

R. C. Anderson 7-15-80
for R. C. ANDERSON

RLV/jr

County of Lea
State of New Mexico

Subscribed and sworn to before me, a Notary Public, by ^{C. L. Morrill for} R. C. ANDERSON, Area Production Manager of Gulf Oil Exploration & Production Company, this 14th day of July, 1980.



A DIVISION OF GULF OIL CORPORATION

Gulf Oil Exploration and Production Company

R. C. Anderson
PRODUCTION MANAGER, HOBBS AREA

July 14, 1980

P. O. Box 670
Hobbs, NM 88240

Re: Application for Permit to Drill
Proposed Fullerton "A" Federal Com #13
San Juan County, New Mexico

U. S. Geological Survey
P. O. Box 959
Farmington, New Mexico 87401

Gentlemen:

We are submitting the information requested in NTL-6 which should accompany application for permit to drill.

Well: Fullerton "A" Federal Com #13

1. Location: 1520' FNL & 1850' FEL, Section 11, T27N, R11W, San Juan County, New Mexico.
2. Elevation of Unprepared Ground: 6049' GL.
3. Geologic Name of Surface Formation: Ojo Alamo Sand
4. Type Drilling Tools: Rotary
5. Proposed Drilling Depth: 6650'
6. Estimated Tops of Geologic Markers: Fruitland 1720'; Pictured Cliffs 1783'; Mancos 4591'; Gallup 5717'; Graneros 6270'; Second Dakota 6425'
7. Estimated Depth at Which Anticipated Gas or Oil-Bearing Formations Expected: Dakota 6150' to 6300'; Pictured Cliffs 1783' to 1883'; Gallup 5717' to 5767'
8. Casing Program and Setting Depths:

	<u>Size</u>	<u>Weight</u>	<u>Grade</u>	<u>Setting Depth</u>
Surface	8-5/8"	24#	K-55	500'
Production	5½"	15.5#	K-55	6650'

9. Casing Setting Depth and Cementing Program:

- a. Surface casing will be set at 500', cemented with 400 sacks Class "B" neat with 2% CaCl₂.



A DIVISION OF GULF OIL CORPORATION

(continued)

- b. Production casing will be set at 6650' and cemented as follows:
6650' to surface with Class "B" with 16% gel, 3% salt and 0.2 of 1% CFR-2, and Class "B" neat with 0.2 of 1% CFR-2.

NOTE: Volume of cement to be determined after running caliper log at total depth.

10. Pressure Control Equipment: The minimum specifications for pressure control equipment will be Gulf's blowout preventer hookup #2 for 300# working pressure.
11. Circulating Media:
- a. 0' to 500' - Fresh water spud mud
 - b. 500' to 4000' - Fresh water
 - c. 4000' to 6650' - Fresh water low solid mud with the following properties: viscosity 32-37 sec., water loss 20-4 cc, weight 8.5-9.0 ppg.
12. Testing, Logging, and Coring Programs:
- a. Formation testing may be done at any depth where samples, drilling rate or log information indicate a possible show of oil or gas.
 - b. Open hole logs will be run prior to running production casing at total depth.
 - c. Coring is not planned.
13. Abnormal Pressure or Temperature and Hydrogen Sulfide Gas: We do not anticipate abnormal pressure, temperature or hydrogen sulfide gas; however, remote control BOP as shown on drawing #2 will be installed.
14. Anticipated Starting Date: Drilling operations should begin August 10, 1980.
15. Other Facets of the Proposed Operation: None.

R. C. Anderson 7-15-80
for R. C. ANDERSON
Area Production Manager

Gulf Oil Exploration and Production Company

R. C. Anderson
PRODUCTION MANAGER, HOBBS AREA

July 14, 1980

P. O. Box 670
Hobbs, NM 88240

Re: Surface Development Plan
Proposed Fullerton "A" Fed Com #13
San Juan, New Mexico

U. S. Geological Survey
P. O. Box 959
Farmington, New Mexico 87401

Gentlemen:

The surface use and operations plan for the proposed Fullerton "A" Federal Com #13 is as follows:

1. Existing Roads:

- A. Exhibit "A" is a portion of a general highway map showing the location of the proposed well as staked. Go south out of Bloomfield, New Mexico, approximately 8 miles on State Highway No. 44, turn east on Angel Peak Road and go 2 miles, turn south. The proposed location is approximately 2800' east of the Fullerton Federal #6.
- B. Exhibit "B" is a plat showing all existing roads within a one-mile radius of the wellsite, as well as the planned access road.

2. Planned Access Roads:

- A. Length and Width: The required new road will be 2800' long and 12' wide, constructed of graded surface material compacted and watered to a depth of 6". The new road will leave existing road and extend to the southwest corner of the drilling pad. This new road is labeled and color-coded red on Exhibits "A" and "B".
- B. Turnouts: None required
- C. Culverts: None required
- D. Cuts and Fills: There will be a 4' cut on either side of a dry wash.
- E. Gates and Cattleguards: 1 cattle guard 100' west of drilling pad.

3. Location of Existing Wells: There are a number of existing wells around the proposed location as shown on Exhibit "A".



A DIVISION OF GULF OIL CORPORATION

(continued)

4. Tank Batteries, Production Facilities and Lease Pipelines: There are tank batteries, production facilities or lease pipelines on this lease operated or owned by Gulf Oil Corporation. If production is encountered, the tank battery and other required producing equipment will be located on the pad. All producing lines will be constructed on the pad on top of the ground. Refer to Exhibit "D".
5. Water Supply: Drilling water will be hauled by trucks over existing roads.
6. Source of Construction Materials: The proposed roads and drilling pad will be constructed by leveling and compacting existing surface materials (mainly sand and clay). No outside materials will be hauled in for construction of roads or drilling pad.
7. Methods of Handling Waste Disposal:
 - A. Drill cuttings will be disposed of in the drilling pits.
 - B. Drilling fluids will be allowed to evaporate in drilling pits until pits are dry.
 - C. Water produced during tests will be disposed of in drilling pits. Oil produced during tests will be stored in test tanks until sold.
 - D. Current laws and regulations pertaining to disposal of human waste will be complied with.
 - E. Trash, waste paper, sacks, garbage and junk will be burned or buried in a separate trash pit and covered with a minimum of 24 inches of dirt. All waste material will be contained to prevent scattering by the wind. Location of trash pit is shown on Exhibit "C".
 - F. All trash and debris will be buried or removed from wellsite within 30 days after finishing drilling and/or completion operations.
8. Ancillary Facilities: None required
9. Wellsite Layout:
 - A. Exhibit "C" shows the relative location and dimensions of the well pad, mud pits, reserve pits, trash pits, and location of major rig components.
 - B. Construction of drilling pad will require a cut of three-four feet on the southwest side, with the cut material being moved to the northeast side to be used as fill.
 - C. The reserve pit will be on south side of pad.
 - D. The wellsite has been staked.

(continued)

10. Plans for Restoration of Surface:

- A. After completion of drilling and/or completion operations, all equipment and other material not needed for operations will be removed. Pits will be filled and location cleaned of all trash and junk to leave wellsite in as aesthetically pleasing condition as possible.
- B. Any unguarded pits containing fluids will be fenced until they are filled.
- C. After abandonment, any special rehabilitation and/or revegetation requirements (reseed with seed mixture No. 2) will be complied with and accomplished as expeditiously as possible. All pits should be filled and levelled within 90 days after abandonment.

11. Other Information:

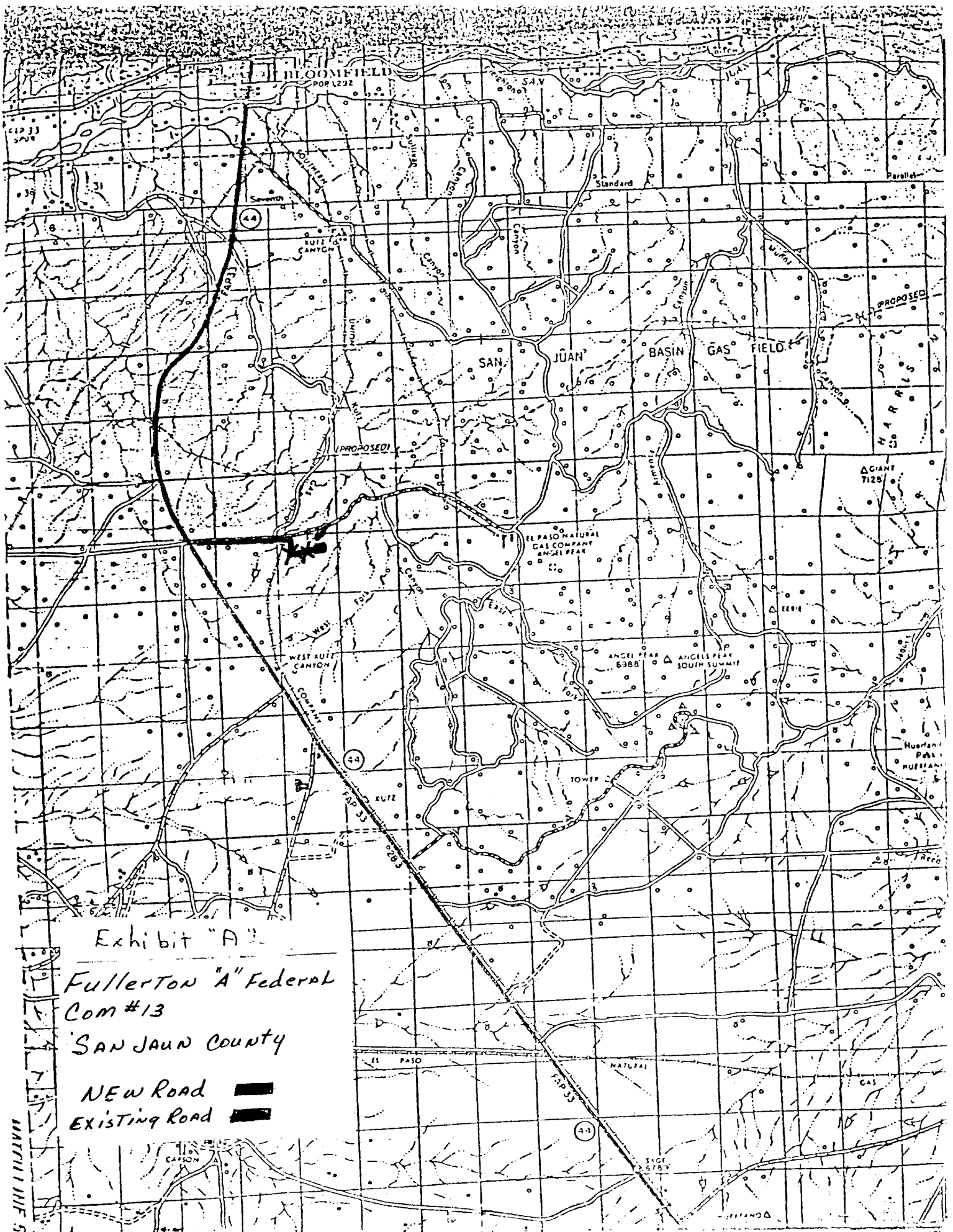
- A. Topography: Location is an eroded area adjacent to steep bluff to the east.
- B. Soil: Soil is sandy loam.
- C. Flora and Fauna: The vegetative cover generally consists of sagebrush, blue gramma and galleta.
- D. Ponds and Streams: There are no streams or ponds in the immediate area.
- E. Residences and Other Structures: The nearest occupied structure is one mile east of the proposed location.
- F. Land Use: Present land use is grazing.
- G. Surface Ownership: Wellsite is on Federal Surface.

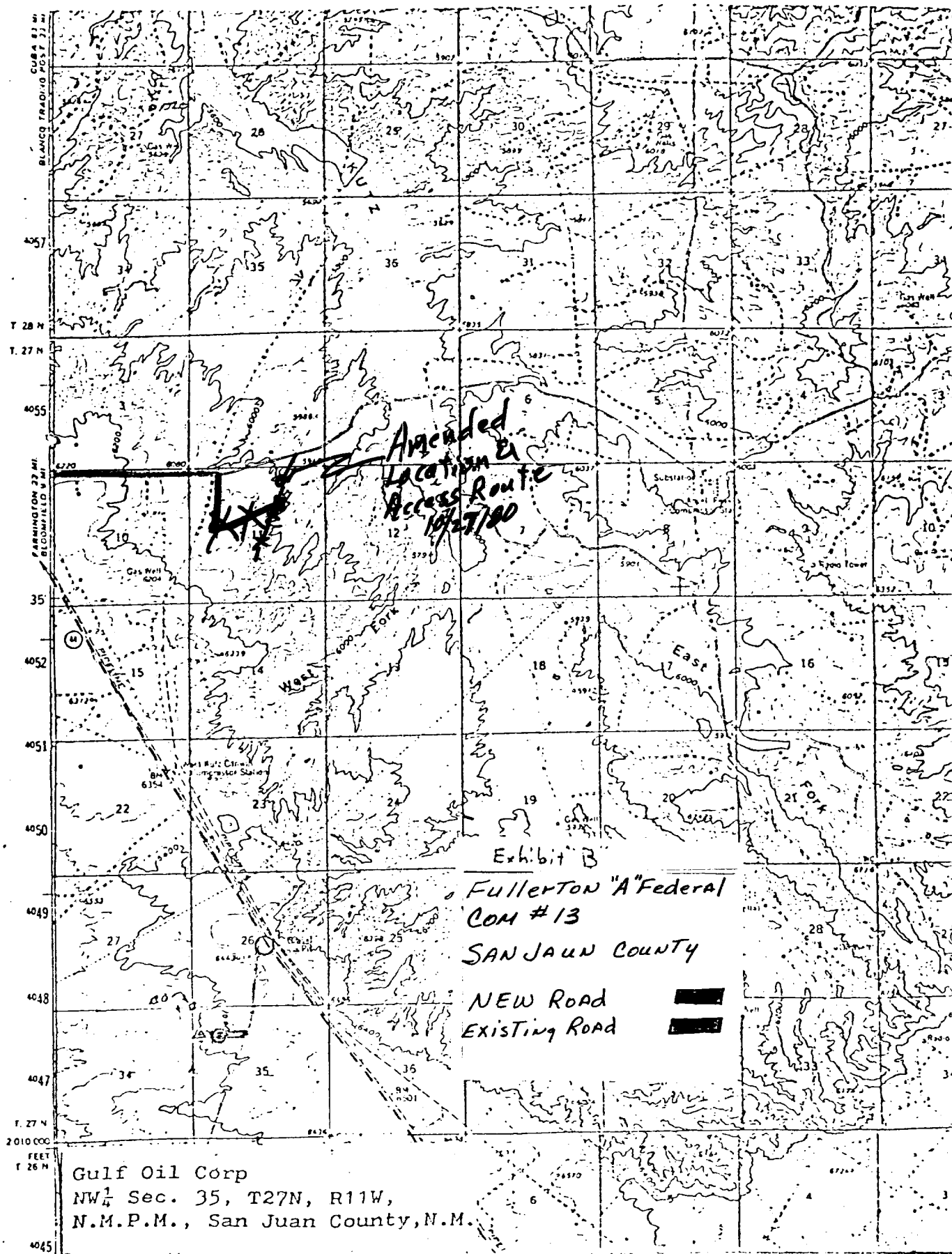
12. Operators Representative: Gulf Oil Exploration and Production Company
A Division of Gulf Oil Corporation
P. O. Box 670, Hobbs, New Mexico 88240
Telephone: (505) 393-4121
Area Production Manager: R. C. Anderson

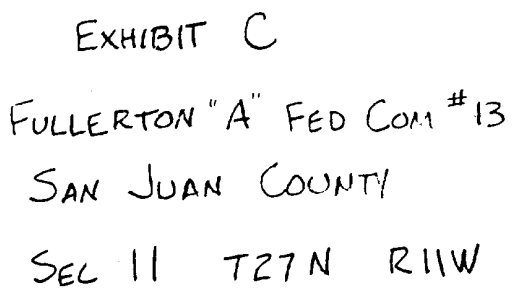
13. Certification:

I hereby certify that I, or persons under my direct supervision, have inspected the proposed drillsite and access route; that I am familiar with the conditions which presently exist; that the statements made in this plan are, to the best of my knowledge, true and correct; and that the work associated with the operations proposed herein will be performed by Gulf Oil Corporation and its contractors and subcontractors in conformity with this plan and the terms and conditions under which it is approved.

R. C. Anderson 7-15-80
for R. C. ANDERSON
Area Production Manager







SEL 11 T27N R11W

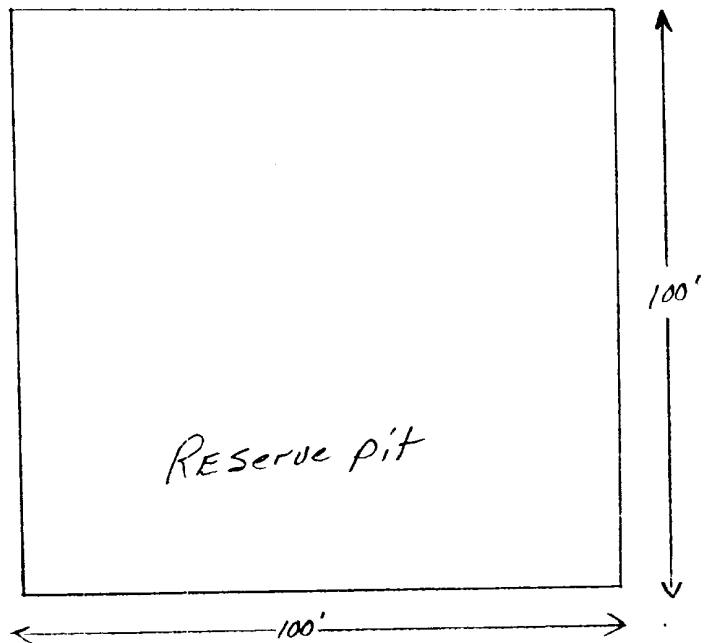
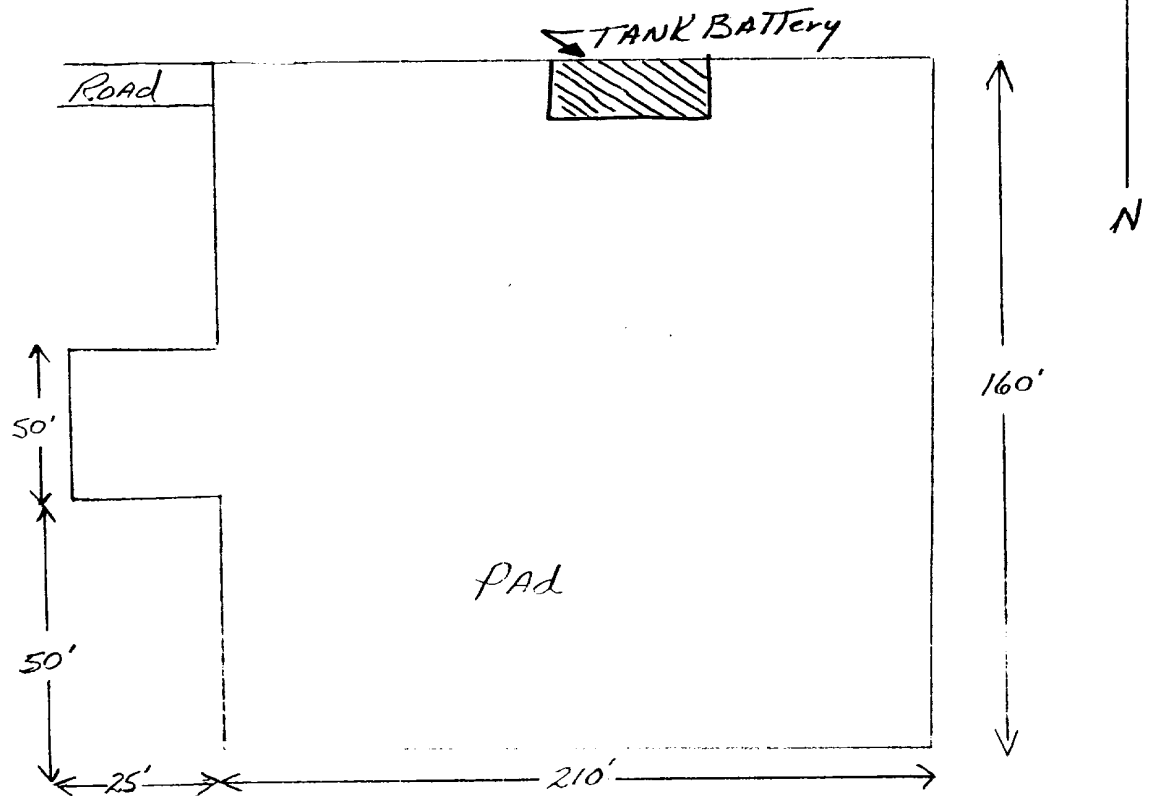


Exhibit D
Fullerton "A" Fed COM # 13
SAN JUAN County
Sec 11 T27N R11W