

UNITED STATES
DEPARTMENT OF THE INTERIOR
GEOLOGICAL SURVEY

APPLICATION FOR PERMIT TO DRILL, DEEPEN, OR PLUG BACK

1a. TYPE OF WORK

DRILL ☒DEEPEN ☐PLUG BACK ☐

b. TYPE OF WELL

OIL
WELL ☐GAS
WELL ☒

OTHER

SINGLE
ZONE ☒MULTIPLE
ZONE ☐

2. NAME OF OPERATOR

Supron Energy Corporation

3. ADDRESS OF OPERATOR

P.O. Box 808, Farmington, New Mexico 87401

4. LOCATION OF WELL (Report location clearly and in accordance with any State requirements.)

At surface

840 Ft./South; 1720 Ft./East line

At proposed prod. zone

Same as above

14. DISTANCE IN MILES AND DIRECTION FROM NEAREST TOWN OR POST OFFICE*

7.5 Miles South of Farmington, New Mexico

15. DISTANCE FROM PROPOSED*

LOCATION TO NEAREST 840 Ft.

PROPERTY OR LEASE LINE, FT.
(Also to nearest drlg. unit line, if any) 840 Ft.18. DISTANCE FROM PROPOSED LOCATION*
TO NEAREST WELL, DRILLING, COMPLETED,
OR APPLIED FOR, ON THIS LEASE, FT.

3265 Ft.

19. PROPOSED DEPTH

6200 Ft.

21. ELEVATIONS (Show whether DF, RT, GR, etc.)

5881 GR

22. APPROX. DATE WORK WILL START*

June 1, 1981

23.

PROPOSED CASING AND CEMENTING PROGRAM

SIZE OF HOLE	SIZE OF CASING	WEIGHT PER FOOT	SETTING DEPTH	QUANTITY OF CEMENT
12-1/4"	8-5/8"	24.00	250 Ft.	150 sx. Circulated
7-7/8"	4-1/2"	10.50	6200 Ft.	950 sx. Cover the Ojo Alamo

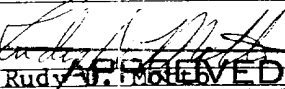
We desire to drill and complete this well as follows: Drill 12-1/4" surface hole to T.D. of approx. 6200 ft. using natural mud as a circulating medium. Run new 8-5/8", 24.00# pipe to T.D. of approx. 250 ft. Drill out with 7-7/8" bit to T.D. of approx. 6200 ft. using mud as a circulating medium. Log the well and run new 4-1/2", 10.50# casing w/D.V. tools set at approx. 4200 ft. and 1480 ft. Cement 1st stage w/approx. 300 sx of 50-50 poz. Cement 2nd stage w/approx. 250 sx. of 50-50 poz followed by 50 sx. of class "B". Cement 3rd stage w/approx. 300 sx. of 65/35 poz followed by 50 sx. of class "B" cement. Pressure test the casing. Perforate the Dakota zone and fracture to stimulate production. Clean the well up and run tubing to the Dakota zone. Nipple down the wellhead and test the well. Connect to a gathering system.

The production from this well has previously been dedicated to a transporter.

IN ABOVE SPACE DESCRIBE PROPOSED PROGRAM: If proposal is to deepen or plug back, give data on present productive zone and proposed new productive zone. If proposal is to drill or deepen directionally, give pertinent data on subsurface locations and measured and true vertical depths. Give blowout preventer program, if any.

24.

SIGNED


Rudy A. Mott

TITLE

Area Superintendent

DATE

February 11, 1981

(This space for signature of State Engineer)

PERMIT NO.

APPROVAL DATE

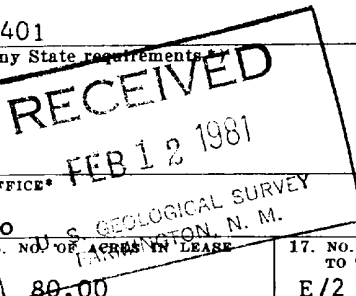
APPROVED BY

TITLE

DATE

CONDITIONS OF APPROVAL, IF ANY

DISTRICT ENGINEER



This action is subject to appeal pursuant to 30 CFR 290.

NEW MEXICO OIL CONSERVATION COMMISSION
WELL LOCATION AND ACREAGE DEDICATION PLAT

Form C-102
Supersedes C-128
Effective 1-1-65

All distances must be from the outer boundaries of the Section.

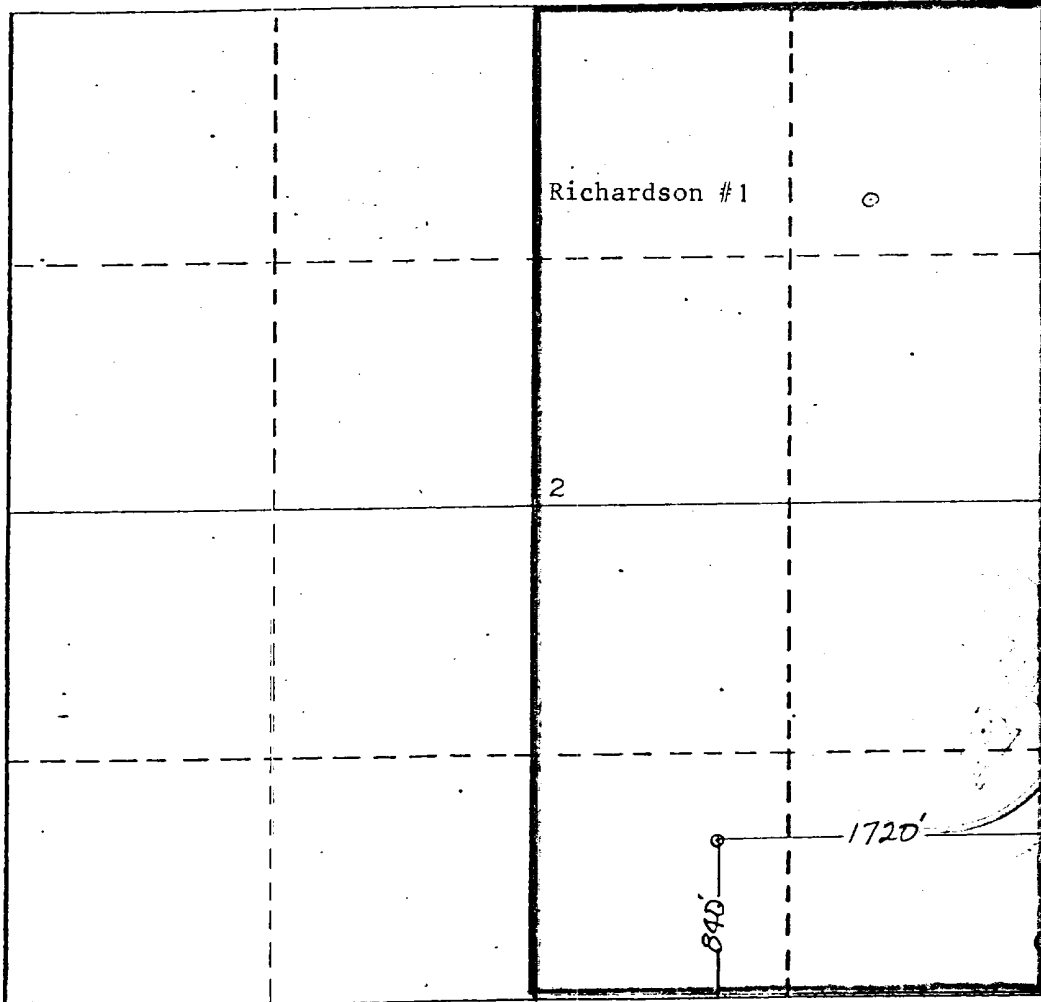
Operator SUPRON ENERGY CORPORATION			Lease RICHARDSON		Well No. 1-E
Unit Letter 0	Section 2	Township 27 NORTH	Range 13 WEST	County SAN JUAN	
Actual Footage Location of Well:					
840 feet from the SOUTH line and		1720 feet from the EAST line			
Ground Level Elev. 5881	Producing Formation Dakota	Pool Basin	Dedicated Acreage: E$\frac{1}{2}$ 319.79 Acres		

1. Outline the acreage dedicated to the subject well by colored pencil or hachure marks on the plat below.
2. If more than one lease is dedicated to the well, outline each and identify the ownership thereof (both as to working interest and royalty).
3. If more than one lease of different ownership is dedicated to the well, have the interests of all owners been consolidated by communitization, unitization, force-pooling, etc?

☒ Yes ☐ No If answer is "yes," type of consolidation Communitized No. 91-006407

If answer is "no," list the owners and tract descriptions which have actually been consolidated. (Use reverse side of this form if necessary.)

No allowable will be assigned to the well until all interests have been consolidated (by communitization, unitization, forced-pooling, or otherwise) or until a non-standard unit, eliminating such interests, has been approved by the Commission.



CERTIFICATION

I hereby certify that the information contained herein is true and complete to the best of my knowledge and belief.

Rudy D. Motto
Name

Rudy D. Motto
Position

Area Superintendent
Company

SUPRON ENERGY CORPORATION
Date

October 13, 1980

I hereby certify that the well location shown on this plat was plotted from field notes of actual surveys made by me or under my supervision, and that the same are true and correct to the best of my knowledge and belief.

NO. 1463
NEW MEXICO
JAMES P. LEASE

Date Surveyed
October 1, 1980

Registered Professional Engineer
and/or Land Surveyor

James P. Lease
James P. Lease

Certificate No.

1463

SUPRON ENERGY CORPORATION

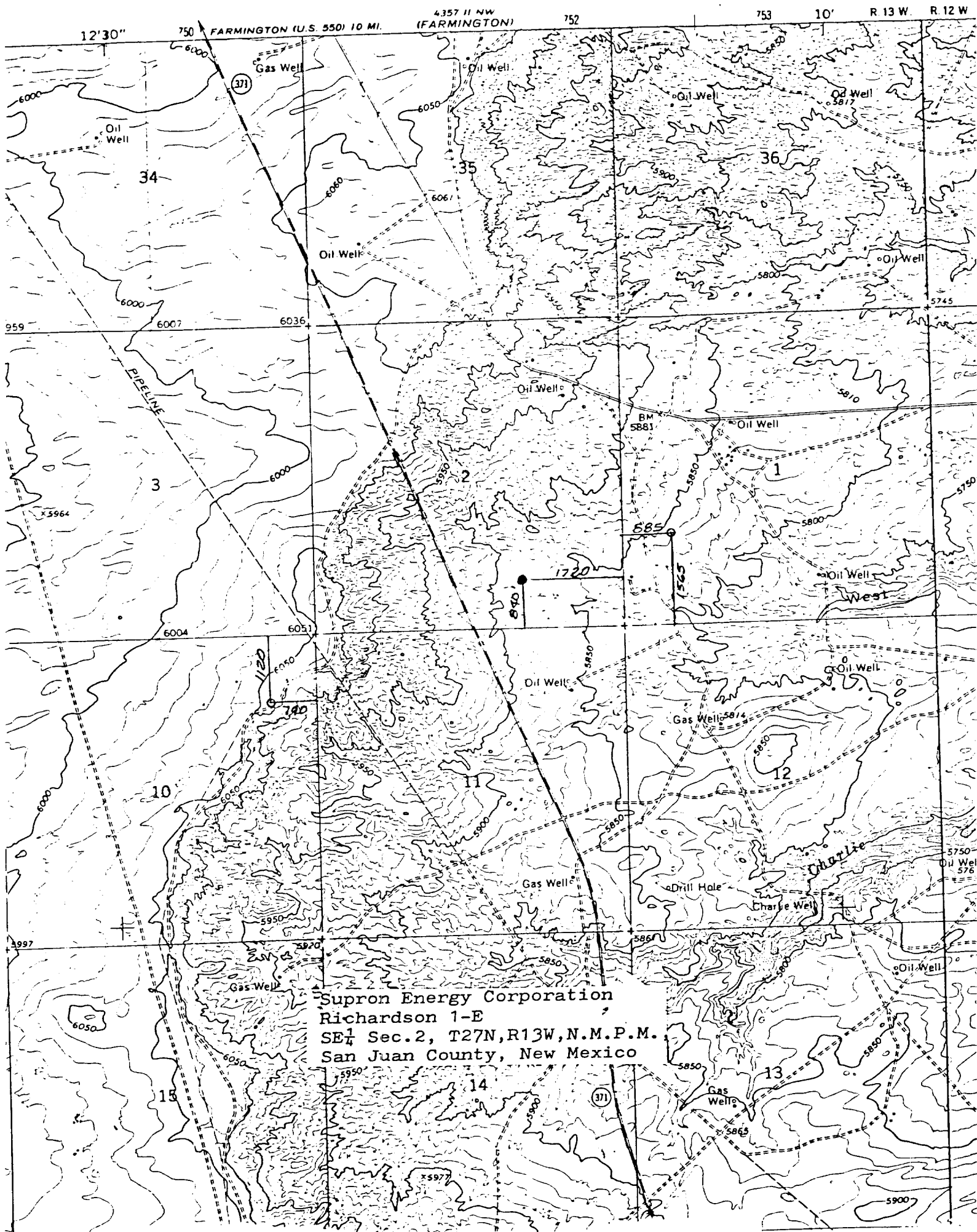
RICHARDSON NO. 1-E

SE/4 Sec. 2, T-27N, R-13W, N.M.P.M.

San Juan County, New Mexico

The following attachments are included with this application:

1. Topographical map showing the proposed location and access road.
2. No access road is required.
3. Map showing existing producing facilities and access roads.
4. Location of surface equipment if required.
5. Drilling and completion water will be obtained from the San Juan river.
6. All pits will be fenced and constructed in such a way as to prevent litter on the location.
7. We will dispose of all waste by placing it in the reserve pit and burying it when the well is completed.
8. There will be no camp at or near the well site.
9. There will be no air strip.
10. A plat is attached showing the location of the rig, mud tanks, reserve pit, burn pit and etc.
11. A letter of certification is attached. The operator representative for compliance purposes is Rudy D. Motto, Area Superintendent, P.O. Box 808, Farmington, New Mexico 87401. Phone (505) 325-3587.
12. After the well is completed, the location will be cleaned up and bladed. The reserve pit will be allowed to dry and then be filled and restored to its natural state.
13. The soil is sandy clay loam and the principal vegetation is juniper, snakeweed, and rice grass.



Supron Energy Corporation
Richardson 1-E
SE $\frac{1}{4}$ Sec. 2, T27N, R13W, N.M.P.M.
San Juan County, New Mexico