

UNITED STATES
DEPARTMENT OF THE INTERIOR
GEOLOGICAL SURVEY

30-645-34910

APPLICATION FOR PERMIT TO DRILL, DEEPEN, OR PLUG BACK

1A. TYPE OF WORK

DRILL ☒DEEPEN ☐PLUG BACK ☐

B. TYPE OF WELL

OIL
WELL ☐GAS
WELL ☒

OTHER

SINGLE
ZONE ☒MULTIPLE
ZONE ☐

2. NAME OF OPERATOR

Terneco Oil Company

3. ADDRESS OF OPERATOR

P.O. Box 3249, Englewood, Colorado 80155

4. LOCATION OF WELL (Report location clearly and in accordance with any State requirements.)

At surface

1520 FSL, 1650 FEL

At proposed prod. zone

same as above

14. DISTANCE IN MILES AND DIRECTION FROM NEAREST TOWN OR POST OFFICE*

Approximately 8 miles SE of Blanco, N.M.

10. DISTANCE FROM PROPOSED*

LOCATION TO NEAREST

PROPERTY OR LEASE LINE, FT.

(Also to nearest drilg. unit line, if any)

990'

16. NO. OF ACRES IN LEASE

1876.58

17. NO. OF ACRES ASSIGNED

TO THIS WELL
E/32018. DISTANCE FROM PROPOSED LOCATION*
TO NEAREST WELL, DRILLING, COMPLETED,
OR APPLIED FOR, ON THIS LEASE, FT.

19. PROPOSED DEPTH

±6620'

20. ROTARY OR CABLE TOOLS

Rotary

21. ELEVATIONS (Show whether DF, RT, GR, etc.)

5858'

22. APPROX. DATE WORK WILL START*

July 1981

23.

PROPOSED CASING AND CEMENTING PROGRAM

SIZE OF HOLE	SIZE OF CASING	WEIGHT PER FOOT	SETTING DEPTH	QUANTITY OF CEMENT
12 1/4"	9 5/8" new	36#	±250'	Circulate to surface
8 3/4"	7" new	23#	±2750'	Circulate to surface
6 1/4"	4 1/2" new	11.6#, 10.5#	±6620'	Circulate to liner top

AUTHORIZED ARE -
WITH ATTACHEDThis office is subject to administrative
control.

See attached.

The gas is dedicated.



IN ABOVE SPACE DESCRIBE PROPOSED PROGRAM: If proposal is to deepen or plug back, give data on present productive zone and proposed new productive zone. If proposal is to drill or deepen directionally, give pertinent data on subsurface locations and measured and true vertical depths. Give blowout prevention program, if any.

24.

SIGNED

R.A. Mishler
R.A. Mishler

TITLE

Sr. Production Analyst

DATE

February 4, 1981

(This space for Federal or State office use)

PERMIT NO.

APPROVED

APPROVAL DATE

APPROVED BY

TITLE

DATE

CONDITIONS OF APPROVAL, IF ANY:

f. Bruch
FEB 25 1981
DISTRICT ENGINEER

*See Instructions On Reverse Side

All distances must be from the outer boundaries of the Section.

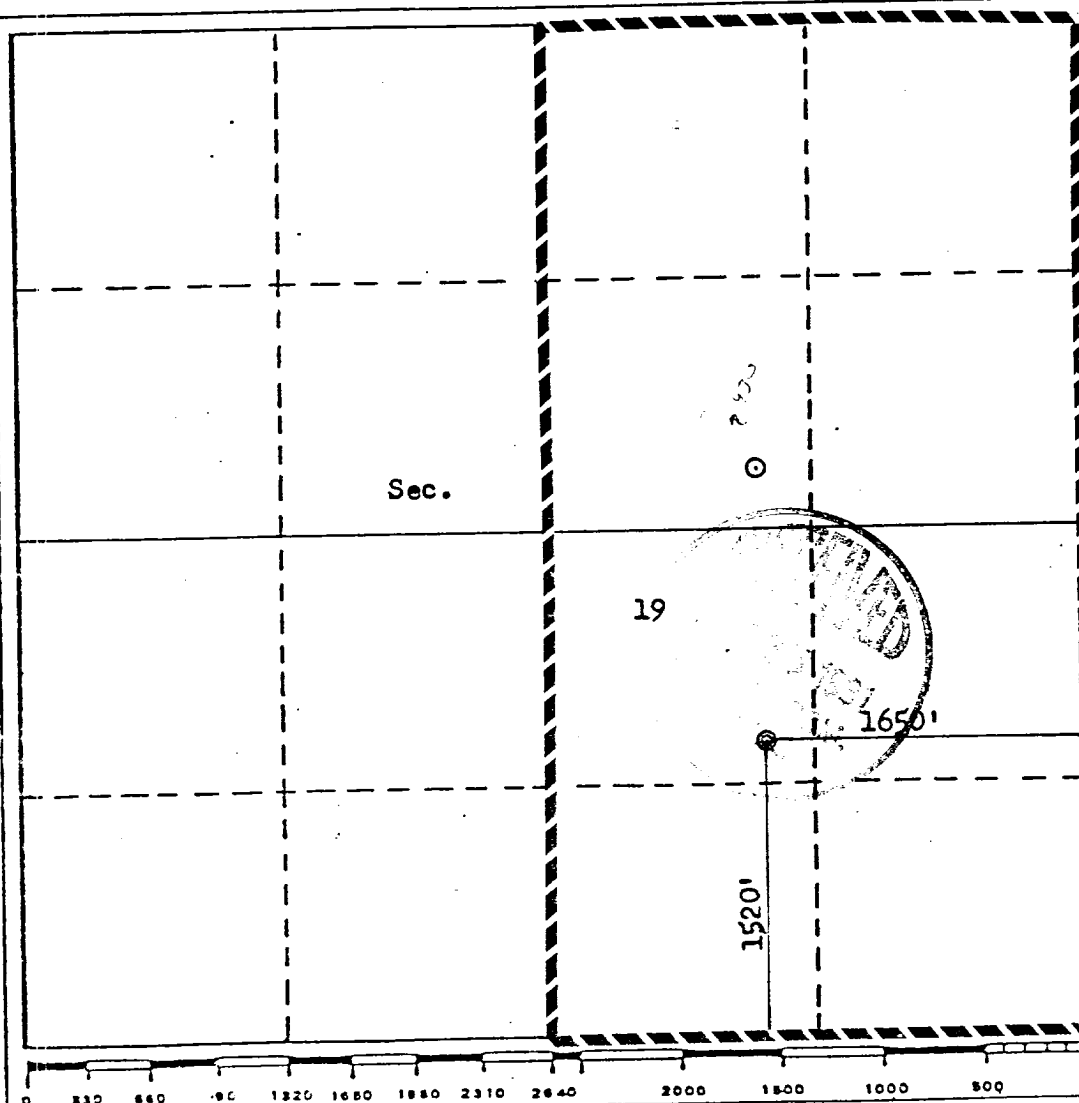
Operator TENNECO OIL COMPANY		Lease BOLACK		Well No. 2E
Unit Letter J	Section 19	Township 28N	Range 8W	County San Juan
Actual Footage Location of Well: 1520 feet from the South line and 1650 feet from the East line				
Ground Level Elev. 5858	Producing Formation Dakota	Pool Basin Dakota	Dedicated Acreage: 320 Acres	

1. Outline the acreage dedicated to the subject well by colored pencil or hatchure marks on the plat below.
2. If more than one lease is dedicated to the well, outline each and identify the ownership thereof (both as to working interest and royalty).
3. If more than one lease of different ownership is dedicated to the well, have the interests of all owners been consolidated by communitization, unitization, force-pooling, etc?

☐ Yes ☐ No If answer is "yes," type of consolidation _____

If answer is "no," list the owners and tract descriptions which have actually been consolidated. (Use reverse side of this form if necessary.) _____

No allowable will be assigned to the well until all interests have been consolidated (by communitization, unitization, forced-pooling, or otherwise) or until a non-standard unit, eliminating such interests, has been approved by the Commission.



CERTIFICATION

I hereby certify that the information contained herein is true and complete to the best of my knowledge and belief.

R. A. Mishler
Name

R. A. Mishler

Position

Sr. Production Analyst

Company

Tenneco Oil Company

Date

February 4, 1981

I hereby certify that the well location shown on this plat was plotted from field notes of actual surveys made by me or under my supervision, and that the same is true and correct to the best of my knowledge and belief.

Date Surveyed

AUG 23 1980

Registered Professional Engineer and/or Land Surveyor

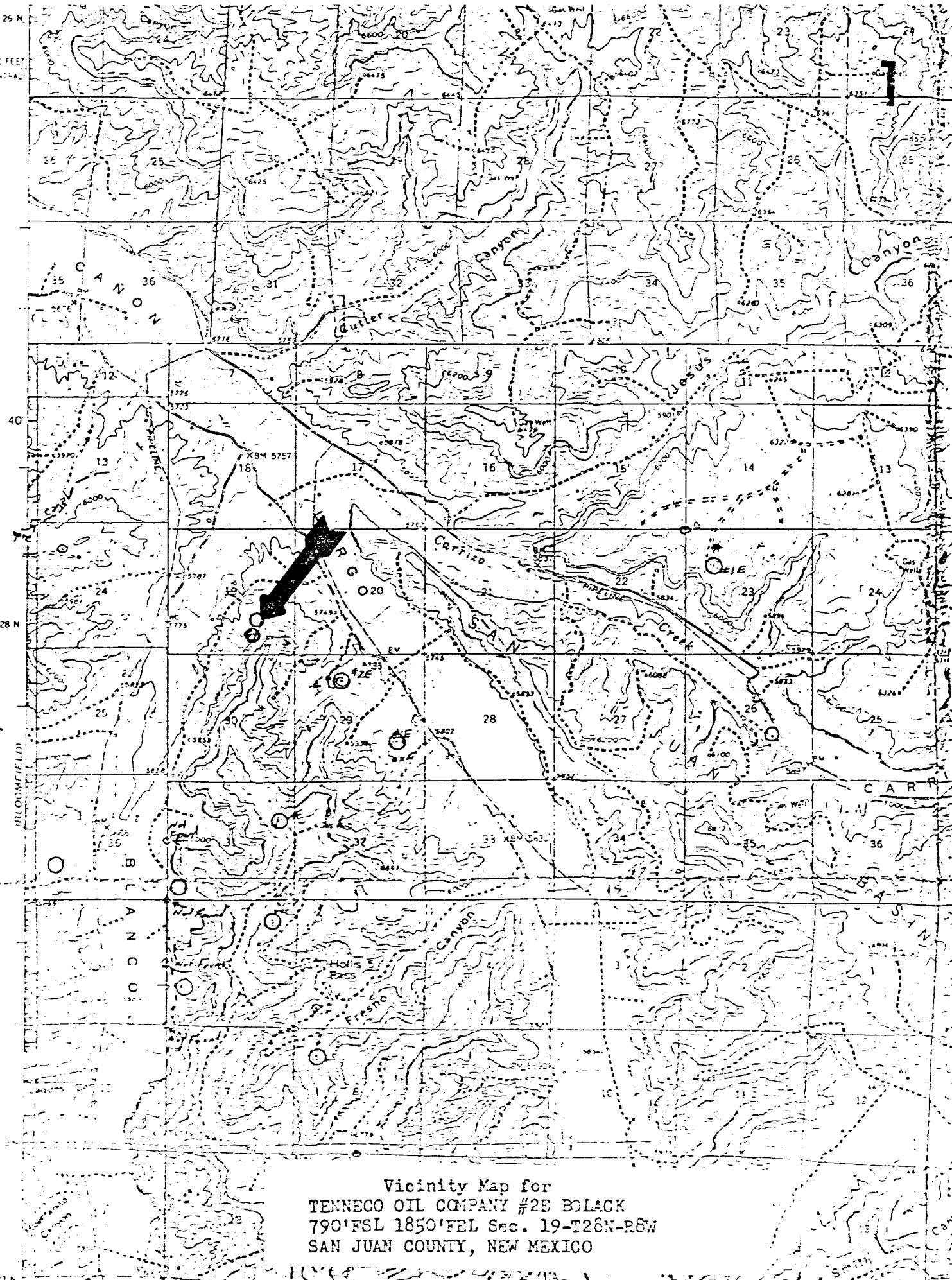
Fred B. Kerr Jr.
Fred B. Kerr Jr.

Certificate No.

3950

T 29 N
2000 SOO FEET
CENTRAL

1



Vicinity Map for
TENNECO OIL COMPANY #2E BOLACK
790'FSL 1850'FEL Sec. 19-T28N-R8W
SAN JUAN COUNTY, NEW MEXICO