

UNITED STATES  
DEPARTMENT OF THE INTERIOR  
GEOLOGICAL SURVEY

## APPLICATION FOR PERMIT TO DRILL, DEEPEN, OR PLUG BACK

## 1a. TYPE OF WORK

DRILL ☒DEEPEN ☐PLUG BACK ☐

## b. TYPE OF WELL

OIL  
WELL ☐GAS  
WELL ☒

OTHER

SINGLE  
ZONE ☒MULTIPLE  
ZONE ☐

## 2. NAME OF OPERATOR

PETROLEUM ENERGY, INC.

## 3. ADDRESS OF OPERATOR

P. O. Box 2121, Durango, Colorado 81301

## 4. LOCATION OF WELL (Report location clearly and in accordance with any State requirements.)\*

At surface SW 1/4 NE 1/4, 1650' from N. Line and 1780' from E. Line.

At proposed prod. zone

Same

## 14. DISTANCE IN MILES AND DIRECTION FROM NEAREST TOWN OR POST OFFICE\*

Shiprock, New Mexico 18 miles Southwest

## 15. DISTANCE FROM PROPOSED\*

LOCATION TO NEAREST  
PROPERTY OR LEASE LINE, FT.  
(Also to nearest drg. unit line, if any)

1650'

## 16. NO. OF ACRES IN LEASE

2560

17. NO. OF ACRES ASSIGNED  
TO THIS WELL

160

## 18. DISTANCE FROM PROPOSED LOCATION\*

TO NEAREST WELL, DRILLING, COMPLETED,  
OR APPLIED FOR, ON THIS LEASE, FT.

3750'

## 19. PROPOSED DEPTH

6700' Miss.

## 20. ROTARY OR CABLE TOOLS

rotary

## 21. ELEVATIONS (Show whether DF, RT, GR, etc.)

5542' GR.

## 22. APPROX. DATE WORK WILL START\*

December 1, 1980

## 23. PROPOSED CASING AND CEMENTING PROGRAM

SIZE OF HOLE	SIZE OF CASING	WEIGHT PER FOOT	SETTING DEPTH	QUANTITY OF CEMENT
17 1/4"	13 3/8"	48.00	60'	150 sacks
12 1/4"	8 5/8"	24.00	1450'	200 sacks
7 7/8"	4 1/2"	10.50	6700'	200 sacks

Lease No. NOO-C-14-20-5420 covers Sections 27, 28, 33 and 34, T27N, R18W,  
San Juan County, New Mexico.

Approval of Compliance Officer and Grazing Lessors will be acquired.

This action is subject to administrative  
appeal pursuant to 30 CFR 290.

IN ABOVE SPACE DESCRIBE PROPOSED PROGRAM: If proposal is to deepen or plug back, give data on present productive zone and proposed new productive zone. If proposal is to drill or deepen directionally, give pertinent data on subsurface locations and measured and true vertical depths. Give blowout preventer program, if any.

## 24. PETROLEUM ENERGY, INC.

SIGNED

TITLE

Agent

DATE

(This space for Federal or State office use)

PERMIT NO.

APPROVAL DATE

APPROVED BY

TITLE

CONDITIONS OF APPROVAL, IF ANY:

NMOCC

APPROVED  
AS ATTENDEDMAR 4 1981  
James F. Sims  
DISTRICT ENGINEER

## OIL CONSERVATION DIVISION

P. O. BOX 2088

SANTA FE, NEW MEXICO 87501

STATE OF NEW MEXICO  
ENERGY AND MINERALS DEPARTMENTForm C-107  
Revised 10-1-

All distances must be from the outer boundaries of the Section.

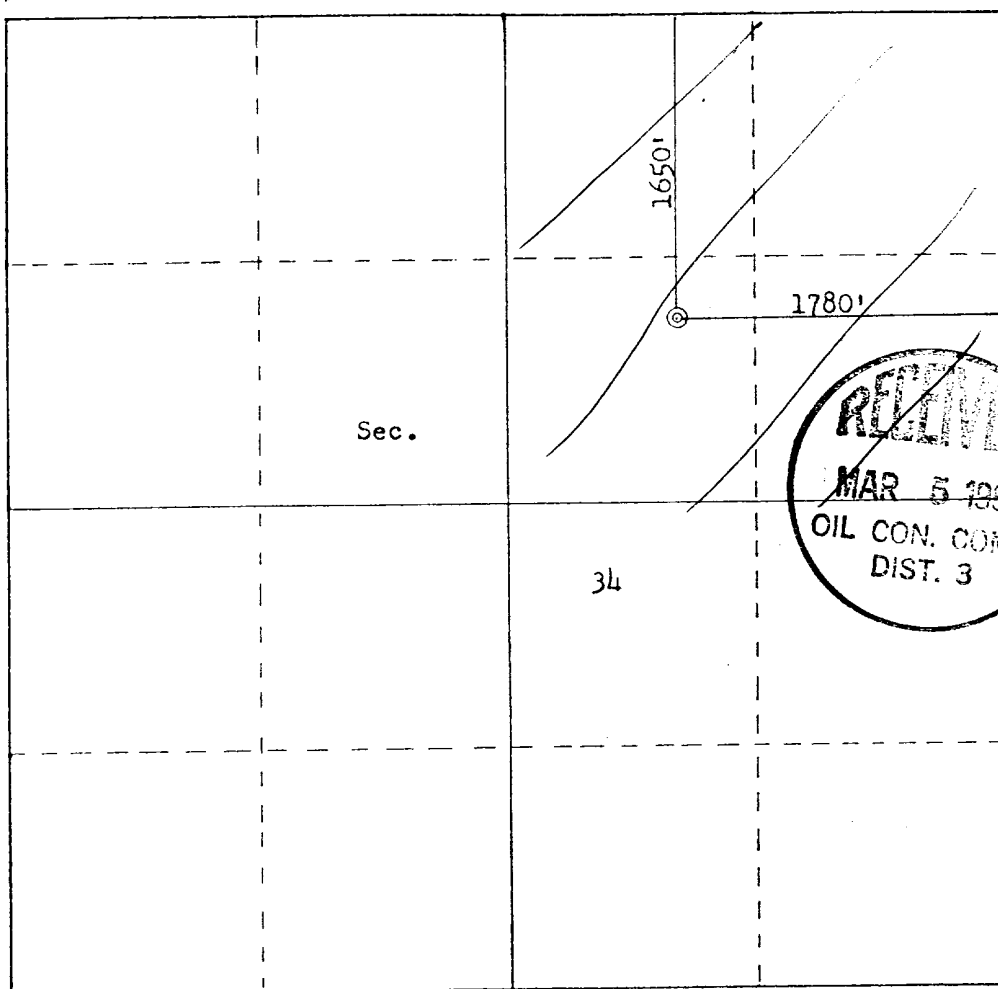
Operator <b>PETROLEUM ENERGY, INCORPORATED</b>			Lease <b>Navajo 34</b>		Well No. <b>3</b>
Unit Letter <b>G</b>	Section <b>34</b>	Township <b>27N</b>	Range <b>18W</b>	County <b>San Juan</b>	
Actual Footage Location of Well: <b>1650</b> feet from the <b>North</b> line and <b>1780</b> feet from the <b>East</b> line					
Ground Level Elev: <b>5542</b>	Producing Formation <b>Miss.</b>		Pool <b>WC</b>		Dedicated Acreage: Acres

1. Outline the acreage dedicated to the subject well by colored pencil or hachure marks on the plat below.
2. If more than one lease is dedicated to the well, outline each and identify the ownership thereof (both as to working interest and royalty).
3. If more than one lease of different ownership is dedicated to the well, have the interests of all owners been consolidated by communitization, unitization, force-pooling, etc?

☐ Yes ☐ No If answer is "yes," type of consolidation \_\_\_\_\_

If answer is "no," list the owners and tract descriptions which have actually been consolidated. (Use reverse side of this form if necessary.) \_\_\_\_\_

No allowable will be assigned to the well until all interests have been consolidated (by communitization, unitization, forced-pooling, or otherwise) or until a non-standard unit, eliminating such interests, has been approved by the Commission.



Scale: 1"=1000'

## CERTIFICATION

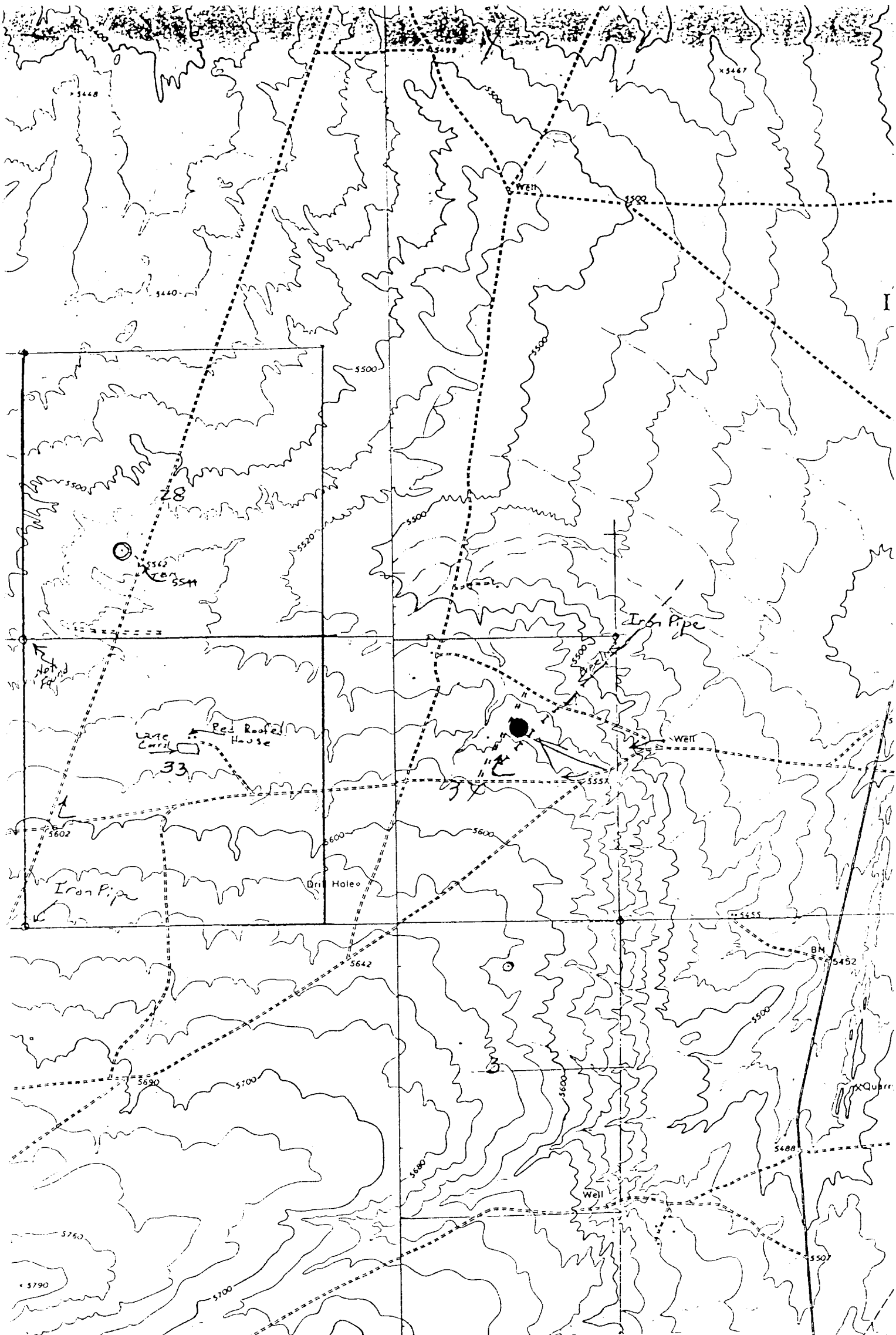
I hereby certify that the information contained herein is true and complete to the best of my knowledge and belief.

Name San Diego  
Agent  
Position  
Company Petroleum Energy, Inc.  
Date 11/24/80

I hereby certify that the well location shown on this plat was plotted from field notes of actual surveys made by me or under my supervision, and that the same is true and correct to the best of my knowledge and belief.

Date Surveyed  
October 23, 1980  
Registered Professional Engineer  
and Land Surveyor  
Fred B. Kerr Jr.  
Certificate No. 3950

FORM 24-11



Vicinity Map for  
PETROLEUM ENERGY, INC. # NAVAJO 3-34  
1650'FNL 1780'FEL Sec. 34-T27N-R18W  
SAN JUAN COUNTY, NEW MEXICO

Mapped, edited, and published by the Geological Survey  
Control by USGS and USC&GS  
Topography by photogrammetric methods from aerial

ROAD CLASSIFICATION

4750' 5' 10"  
104