

UNITED STATES  
DEPARTMENT OF THE INTERIOR  
GEOLOGICAL SURVEY

30-045-24989

## APPLICATION FOR PERMIT TO DRILL, DEEPEN, OR PLUG BACK

## 1A. TYPE OF WORK

DRILL ☒DEEPEN ☐PLUG BACK ☐

## B. TYPE OF WELL

OIL  
WELL ☐GAS  
WELL ☒

OTHER

SINGLE  
ZONE ☒MULTIPLE  
ZONE ☐

## 2. NAME OF OPERATOR

Tenneco Oil Company

## 3. ADDRESS OF OPERATOR

P. O. Box 3249, Englewood, Colorado 80155

## 4. LOCATION OF WELL (Report location clearly and in accordance with any State requirements.)\*

At surface

1715 FSL, 1115 FEL

At proposed prod. zone  
same

## 14. DISTANCE IN MILES AND DIRECTION FROM NEAREST TOWN OR POST OFFICE\*

Approximately 9 miles SE of Blanco, New Mexico

## 15. DISTANCE FROM PROPOSED\*

LOCATION TO NEAREST  
PROPERTY OR LEASE LINE, FT. 925'  
(Also to nearest drlg. unit line, if any)18. DISTANCE FROM PROPOSED LOCATION\*  
TO NEAREST WELL, DRILLING COMPLETED,  
OR APPLIED FOR, ON THIS LEASE, FT.

## 16. NO. OF ACRES IN LEASE

1226.41

## 19. PROPOSED DEPTH

+ 6780

17. NO. OF ACRES ASSIGNED  
TO THIS WELL

5/320

## 20. ROTARY OR CABLE TOOLS

rotary

## 21. ELEVATIONS (Show whether DF, RT, GR, etc.)

5901' GR

## 22. APPROX. DATE WORK WILL START\*

July 1981

## 23.

## PROPOSED CASING AND CEMENTING PROGRAM

SIZE OF HOLE	SIZE OF CASING	WEIGHT PER FOOT	SETTING DEPTH	QUANTITY OF CEMENT
12 1/4"	9 5/8" new	36#	+ 250'	Circulate to surface
8 3/4"	7 " new	23#	+ 2820'	Circulate to surface
6 1/4"	4 1/2" new	11.6#, 10.5#	+ 6780'	Circulate to liner top

See attached.

The gas is dedicated.



IN ABOVE SPACE DESCRIBE PROPOSED PROGRAM: If proposal is to deepen or plug back, give data on present productive zone and proposed new productive zone. If proposal is to drill or deepen directionally, give pertinent data on subsurface locations and measured and true vertical depths. Give blowout preventer program, if any.

## 34.

SIGNED

TITLE Sr. Production Analyst

DATE March 3, 1981

(This space for Federal or State office use)

PERMIT NO.

APPROVAL DATE

APPROVED BY

TITLE

DATE

CONDITIONS OF APPROVAL, IF ANY:

ok 3-

\*See Instructions On Reverse Side

NMOCC

APPROVED  
AS AMENDEDAPR 07 1981  
  
JAMES F. SIMS  
DISTRICT ENGINEER

All distances must be from the outer boundaries of the Section.

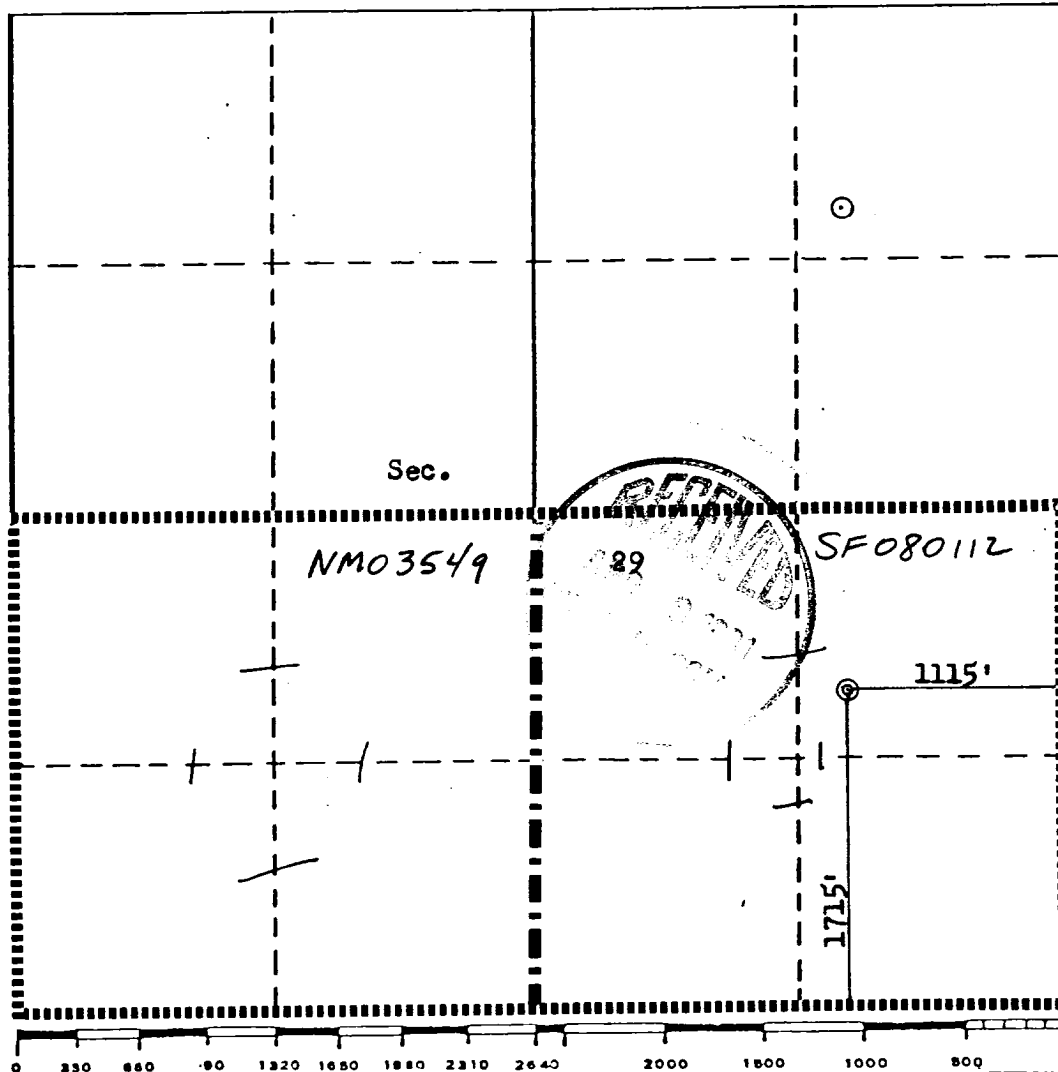
Operator <b>TENNECO OIL COMPANY</b>			Lease <b>BOLACK</b>		Well No. <b>1E</b>
Unit Letter <b>I</b>	Section <b>29</b>	Township <b>28N</b>	Range <b>8W</b>	County <b>San Juan</b>	
Actual Footage Location of Well: <b>1715</b> feet from the <b>South</b> line and <b>1115</b> feet from the <b>East</b> line					
Ground Level Elev. <b>5901</b>	Producing Formation <b>Dakota</b>		Pool <b>Basin Dakota</b>		Dedicated Acreage: <b>320</b> Acres

1. Outline the acreage dedicated to the subject well by colored pencil or hatchure marks on the plat below.
2. If more than one lease is dedicated to the well, outline each and identify the ownership thereof (both as to working interest and royalty).
3. If more than one lease of different ownership is dedicated to the well, have the interests of all owners been consolidated by communitization, unitization, force-pooling, etc?

☐ Yes ☐ No If answer is "yes," type of consolidation \_\_\_\_\_

If answer is "no," list the owners and tract descriptions which have actually been consolidated. (Use reverse side of this form if necessary.) \_\_\_\_\_

No allowable will be assigned to the well until all interests have been consolidated (by communitization, unitization, forced-pooling, or otherwise) or until a non-standard unit, eliminating such interests, has been approved by the Commission.



CERTIFICATION

I hereby certify that the information contained herein is true and complete to the best of my knowledge and belief.

*H. A. Miskler*  
Name

Senior Production Analyst

Position

Tenneco Oil Company

Company

March 3, 1981

Date

I hereby certify that the well location shown on this plat was plotted from field notes of actual surveys made by me or under my supervision, and that the same is true and correct to the best of my knowledge and belief.

Date Surveyed

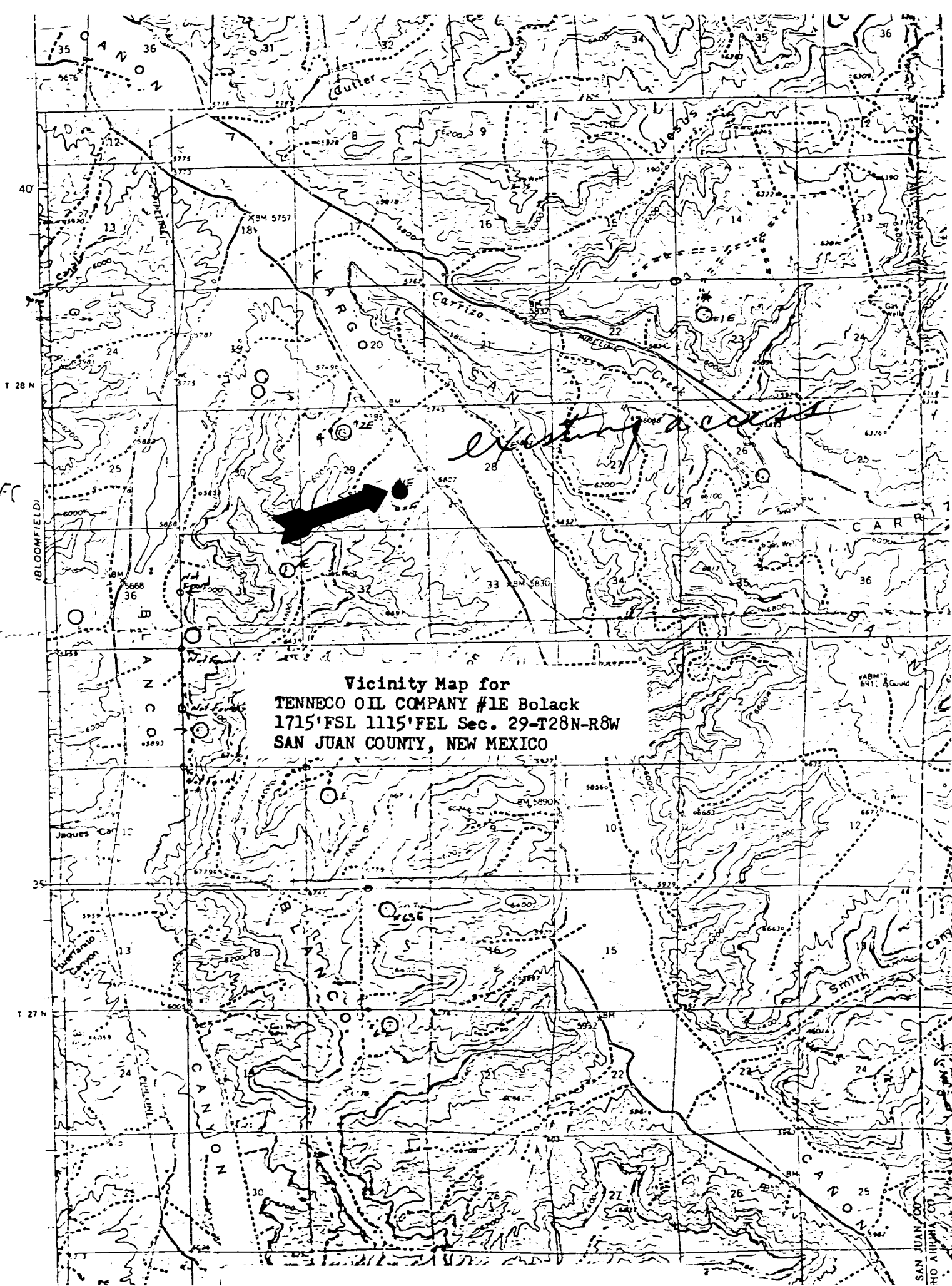
August 8, 1980

Registered Professional Engineer and Land Surveyor

*Fred B. Kerr Jr.*  
Fred B. Kerr Jr.

Certification No. 3950

1115 FC  
21.5



SAN JUAN COUNTY  
NEW MEXICO