

UNITED STATES
DEPARTMENT OF THE INTERIOR
GEOLOGICAL SURVEY

SUNDRY NOTICES AND REPORTS ON WELLS

(Do not use this form for proposals to drill or to deepen or plug back to a different reservoir. Use Form 9-331-C for such proposals.)

1. oil ☐ well gas ☒ well other ☐

2. NAME OF OPERATOR

Southland Royalty Company

3. ADDRESS OF OPERATOR

P.O. Drawer 570, Farmington, New Mexico 87401

4. LOCATION OF WELL (REPORT LOCATION CLEARLY. See space 17 below.)

AT SURFACE: 1610' FSL & 1070' FEL

AT TOP PROD. INTERVAL:

AT TOTAL DEPTH:

16. CHECK APPROPRIATE BOX TO INDICATE NATURE OF NOTICE, REPORT, OR OTHER DATA

REQUEST FOR APPROVAL TO:

TEST WATER SHUT-OFF ☐

FRACTURE TREAT ☐

SHOOT OR ACIDIZE ☐

REPAIR WELL ☐

PULL OR ALTER CASING ☐

MULTIPLE COMPLETE ☐

CHANGE ZONES ☐

ABANDON* ☐

(other) Casing Report ☒

SUBSEQUENT REPORT OF:

☐

☐

☐

☐

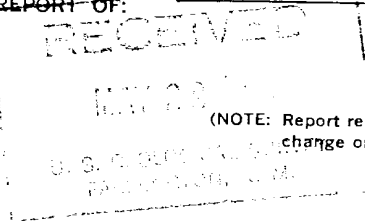
☐

☐

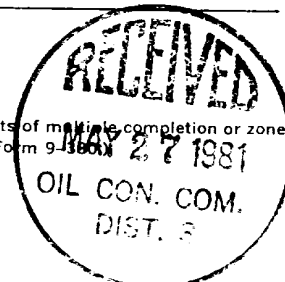
☐

☐

☒



(NOTE: Report results of multiple completion or zone change on Form 9-331-C)



5. LEASE
SF-077874

6. IF INDIAN, ALLOTTEE OR TRIBE NAME

7. UNIT AGREEMENT NAME

8. FARM OR LEASE NAME
Hanks

9. WELL NO.
#18-M

10. FIELD OR WILDCAT NAME

Basin Dakota/Blanco Mesa Verde

11. SEC., T., R., M., OR BLK. AND SURVEY OR AREA

Section 5, T27N, R9W

12. COUNTY OR PARISH

San Juan

13. STATE

New Mexico

14. API NO.

15. ELEVATIONS (SHOW DF, KDB, AND WD)
6466' GL

17. DESCRIBE PROPOSED OR COMPLETED OPERATIONS (Clearly state all pertinent details, and give pertinent dates, including estimated date of starting any proposed work. If well is directionally drilled, give subsurface locations and measured and true vertical depths for all markers and zones pertinent to this work.)*

5-20-81 Ran 8 joints (335.89') of 5-1/2", 17#, K-55, LT&C & 161 joints (6757.11') of 5-1/2", 15.50#, K-55, LT&C casing set at 7105'. DV tools set at 2703' & 5182'. Cemented 1st stage with 125 sacks Class "B" 50/50 Poz with 6% gel and 1/4# gel flake per sack, followed by 50 sacks of Class "B" Neat with 3% CaCl₂. Plug down at 7:30 P.M. 5-19-81. Cemented 2nd stage with 270 sacks of Class "B" 50/50 Poz with 6% gel and 1/4# gel flake per sack, followed by 50 sacks of Class "B" Neat with 2% CaCl₂. Plug down at 12:30 A.M. 5-20-81. Cemented 3rd stage with 145 sacks of Class "B" 50/50 Poz with 6% gel and 1/4# gel flake per sack, followed by 50 sacks of Class "B" Neat with 2% CaCl₂. Plug down at 5:15 A.M. 5-20-81. Top of cement at 150'.

Subsurface Safety Valve: Manu. and Type _____ Set @ _____ Ft.

18. I hereby certify that the foregoing is true and correct

SIGNED Esther Reyes TITLE Drilling Clerk DATE May 21, 1981

(This space for Federal or State office use)

APPROVED BY _____ TITLE _____ DATE _____

CONDITIONS OF APPROVAL, IF ANY:

NMOCC

*See Instructions on Reverse Side

END

