

UNITED STATES
DEPARTMENT OF THE INTERIOR
GEOLOGICAL SURVEY

APPLICATION FOR PERMIT TO DRILL, DEEPEN, OR PLUG BACK

1a. TYPE OF WORK

DRILL ☒DEEPEN ☐PLUG BACK ☐

b. TYPE OF WELL

OIL
WELL ☐GAS
WELL ☒OTHER ☐SINGLE
ZONE ☐MULTIPLE
ZONE ☒

2. NAME OF OPERATOR

Gulf Oil Corporation

3. ADDRESS OF OPERATOR

P. O. Box 670, Hobbs, NM 88240

4. LOCATION OF WELL (Report location clearly and in accordance with any State requirements.)

At surface

1850' FSL & 1850' FEL

At proposed prod. zone

14. DISTANCE IN MILES AND DIRECTION FROM NEAREST TOWN OR POST OFFICE*

Approximately 24 miles south-southwest of Bloomfield, NM

15. DISTANCE FROM PROPOSED*

LOCATION TO NEAREST

PROPERTY OR LEASE LINE, FT.

(Also to nearest drlg. unit line, if any)

18. DISTANCE FROM PROPOSED LOCATION*

TO NEAREST WELL, DRILLING, COMPLETED,
OR APPLIED FOR, ON THIS LEASE, FT.

21. ELEVATIONS (Show whether DF, RT, GR, etc.)

6372' GL

16. NO. OF ACRES IN LEASE

2560

19. PROPOSED DEPTH

6750'

17. NO. OF ACRES ASSIGNED
TO THIS WELL

320

20. ROTARY OR CABLE TOOLS

Rotary

22. APPROX. DATE WORK WILL START*

June 1, 1981

23.

PROPOSED CASING AND CEMENTING PROGRAM This action is subject to administrative

SIZE OF HOLE	SIZE OF CASING	WEIGHT PER FOOT	SETTING DEPTH	QUANTITY OF CEMENT
12 1/2"	8-5/8"	24#	750	400 sx - circ
7-7/8"	5 1/2"	15.5#	6750	To be determined by caliper log

NOTE: See Attached BOP Drawing #2

Circulating Media: 0' - 500' Fresh water spud mud
500' - 4000' Fresh water
4000' - 6750' Fresh water gel with the following properties:
viscosity 32-37 sec, water loss 20-4cc,
weight 8.5-9.0 ppg

Gas Is Dedicated

IN ABOVE SPACE DESCRIBE PROPOSED PROGRAM: If proposal is to deepen or plug back, give data on present productive zone and proposed new productive zone. If proposal is to drill or deepen directionally, give pertinent data on subsurface locations and measured and true vertical depths. Give blowout preventer program, if any.

24.

SIGNED

R.C. Anderson

TITLE

Area Production Manager

DATE

4-8-81

(This space for Federal or State office use)

PERMIT NO.

APPROVAL DATE

APPROVED BY

CONDITIONS OF APPROVAL, IF ANY:

TITLE

APPROVED
AS AMENDEDAPR 27 1981
James F. Sims
JAMES F. SIMS
DISTRICT ENGINEER

*See Instructions On Reverse Side

NEW MEXICO OIL CO.
WELL LOCATION AND ACREAGE DEDICATION PLAT

Supersedes C-128
Effective 1-1-83

All distances must be from the outer boundaries of the Section.

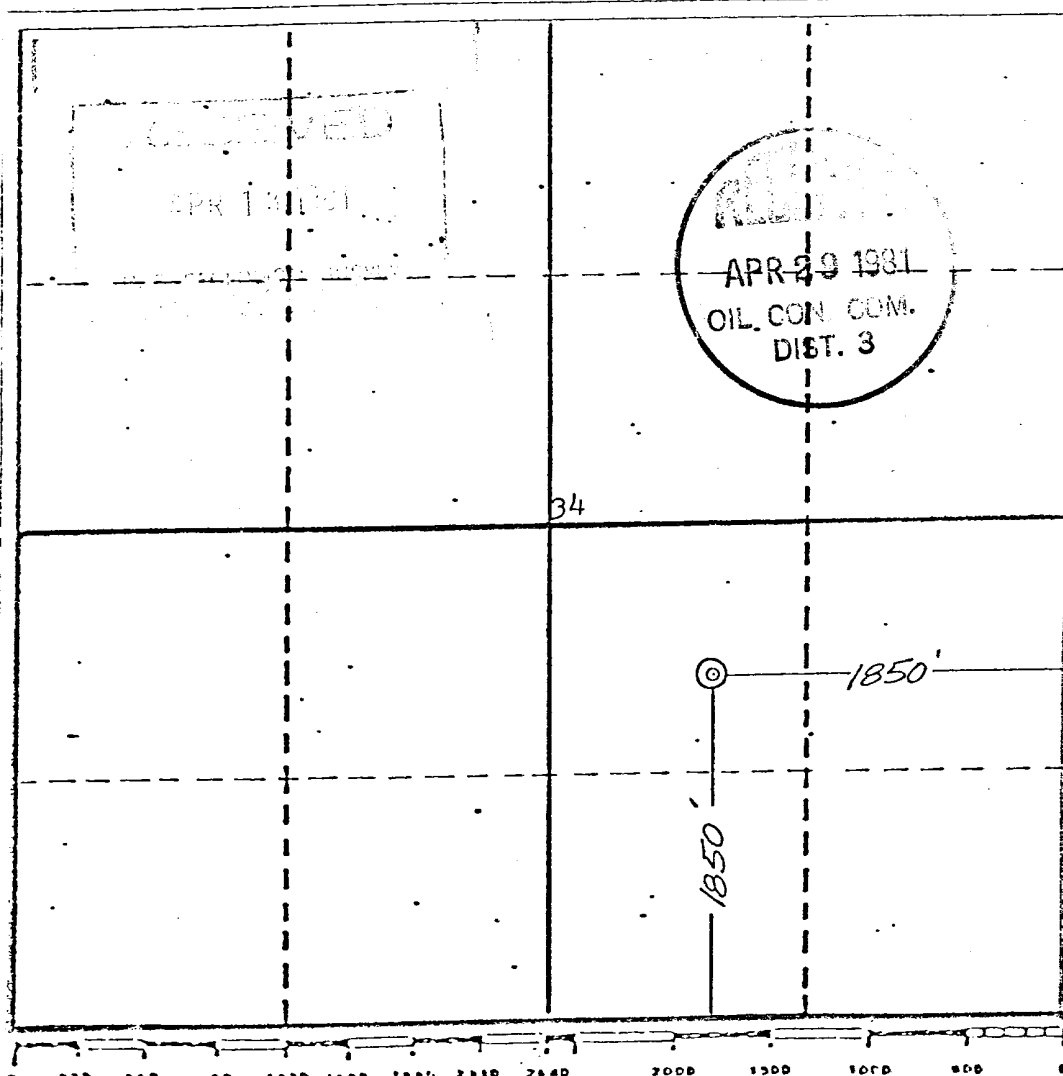
GULF OIL CORPORATION		Lease		DOUTHIT C FEDERAL		Well No.
						#1 E
Unit Letter	Section	Township	Range	County		
J	34	27 NORTH	11 WEST	SAN JUAN		
Actual Footage Location of Well:						
1850 feet from the SOUTH		line and		1850 feet from the EAST		line
Ground Level Elev.	Producing Formation	Pool		Dedicated Acreage:		Acres
6372	Dakota	Basin Dakota		320		

1. Outline the acreage dedicated to the subject well by colored pencil or hatchure marks on the plat below.
2. If more than one lease is dedicated to the well, outline each and identify the ownership thereof (both as to working interest and royalty).
3. If more than one lease of different ownership is dedicated to the well, have the interests of all owners been consolidated by communitization, unitization, force-pooling, etc?

☐ Yes ☐ No If answer is "yes," type of consolidation _____

If answer is "no," list the owners and tract descriptions which have actually been consolidated. (Use reverse side of this form if necessary.) _____

No allowable will be assigned to the well until all interests have been consolidated (by communitization, unitization, forced-pooling, or otherwise) or until a non-standard unit, eliminating such interests, has been approved by the Commission.



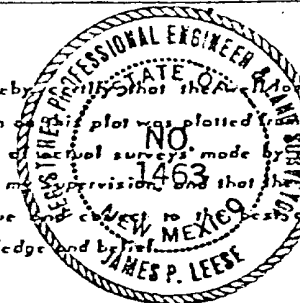
CERTIFICATION

I hereby certify that the information contained herein is true and complete to the best of my knowledge and belief.

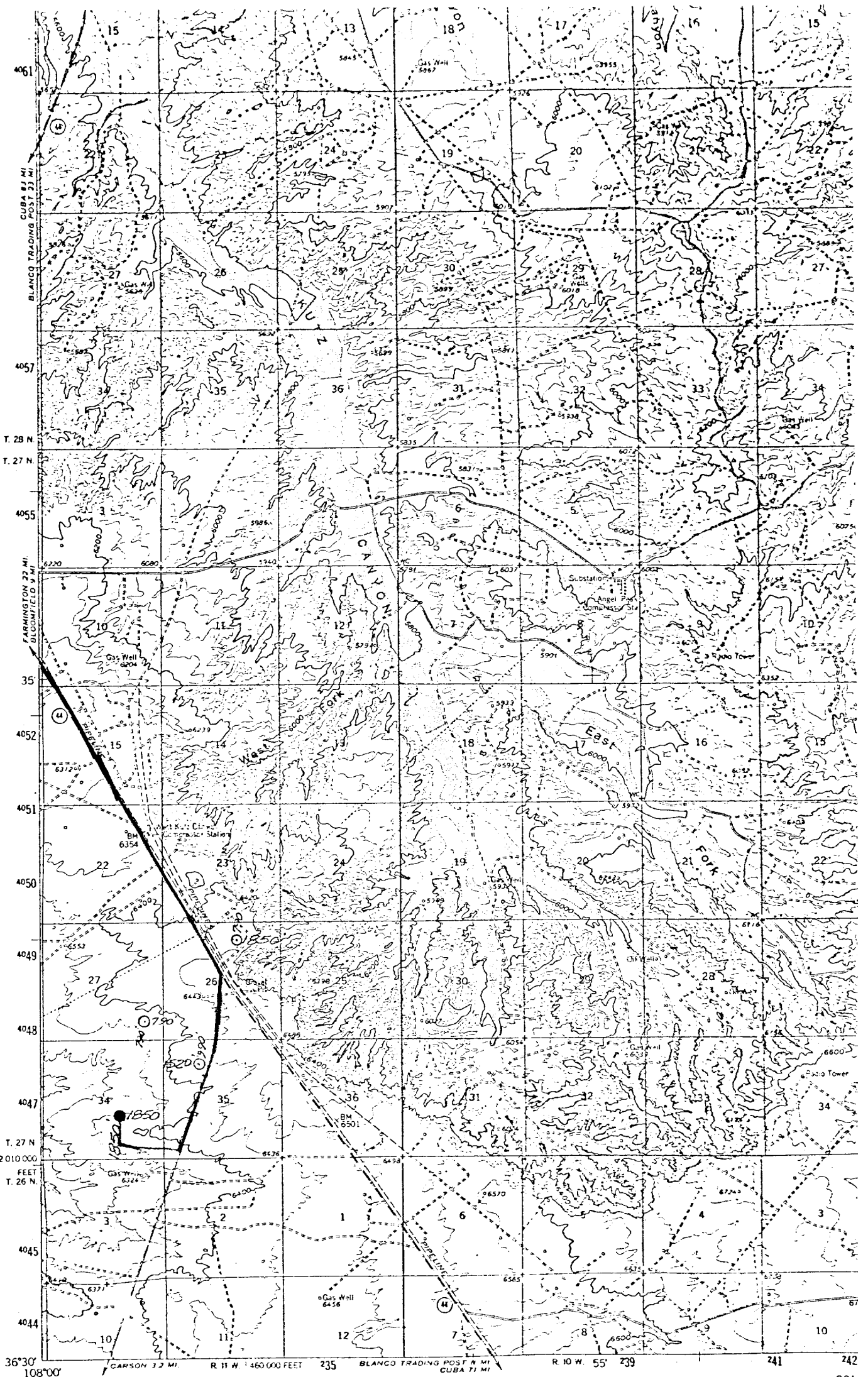
R. C. Anderson

Name
R. C. Anderson
Position
Area Production Manager
Company
Gulf Oil Corporation
Date
4-8-81

I hereby certify that the well location shown on this plat was plotted from field notes of actual surveys made by me or under my supervision and that the same is true and correct to the best of my knowledge and belief.



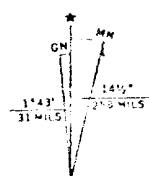
Date Surveyed
February 24, 1981
Registered Professional Engineer and/or Land Surveyor
James P. Leese
James P. Leese
Certificate No.
1463



Mapped, edited, and published by the Geological Survey
Control by USGS and USC&GS

GULF OIL CORPORATION
Douthitt C Federal #1 E
SE $\frac{1}{4}$ Sec. 34, T27N, R11W, N.M.P.M.
San Juan County, New Mexico

EXHIBIT "B"



UTM GRID AND 1960 MAGNETIC NORTH
DECLINATION AT CENTER OF SHEET



CONTOUR
DATING

THIS MAP COMPLIES WITH N
FOR SALE BY U. S. GEOLOGICAL SURVEY, DEPT
A FOLDER DESCRIBING TOPOGRAPHIC