

UNITED STATES
DEPARTMENT OF THE INTERIOR
GEOLOGICAL SURVEY

APPLICATION FOR PERMIT TO DRILL, DEEPEN, OR PLUG BACK

1a. TYPE OF WORK

DRILL ☒

DEEPEN ☐

PLUG BACK ☐

b. TYPE OF WELL

OIL
WELL ☐

GAS
WELL ☒

OTHER

SINGLE
ZONE ☐

MULTIPLE
ZONE ☐

2. NAME OF OPERATOR

Gulf Oil Corporation

3. ADDRESS OF OPERATOR

P. O. Box 670, Hobbs, NM 88240

4. LOCATION OF WELL (Report location clearly and in accordance with any State requirements.)*

At surface

790' FSL & 790' FEL

At proposed prod. zone

14. DISTANCE IN MILES AND DIRECTION FROM NEAREST TOWN OR POST OFFICE*

Approximately 24 miles south-southwest of Bloomfield, NM

15. DISTANCE FROM PROPOSED*

LOCATION TO NEAREST
PROPERTY OR LEASE LINE, FT.
(Also to nearest drlg. unit line, if any)

18. DISTANCE FROM PROPOSED LOCATION*
TO NEAREST WELL, DRILLING, COMPLETED,
OR APPLIED FOR, ON THIS LEASE, FT.

16. NO. OF ACRES IN LEASE

2560

19. PROPOSED DEPTH

6750'

17. NO. OF ACRES ASSIGNED
TO THIS WELL

320

20. ROTARY OR CABLE TOOLS

Rotary

21. ELEVATIONS (Show whether DF, RT, GR, etc.)

6391' GL

22. APPROX. DATE WORK WILL START*

June 15, 1981

23.

PROPOSED CASING AND CEMENTING PROGRAM

SIZE OF HOLE	SIZE OF CASING	WEIGHT PER FOOT	SETTING DEPTH	QUANTITY OF CEMENT
12 1/4"	8-5/8"	24 1/2	750'	400 sx-circ
7-7/8"	5 1/2"	15.5	6750'	To be determined by caliper log

See Attached BOP Drawing #2

Circulating Media: 0' - 500' Fresh water spud mud
500' - 4000' Fresh water
4000' - 6750' Fresh water gel with the following properties:
viscosity 32-37 sec, water loss 20-4cc,
weight 8.5-9.0 ppg

Gas Is Dedicated

IN ABOVE SPACE DESCRIBE PROPOSED PROGRAM: If proposal is to deepen or plug back, give data on present productive zone and proposed new productive zone. If proposal is to drill or deepen directionally, give pertinent data on subsurface locations and measured and true vertical depths. Give blowout preventer program, if any.

24.

SIGNED

R. C. Anderson

TITLE Area Production Manager

DATE 5-19-81

(This space for Federal or State office use)

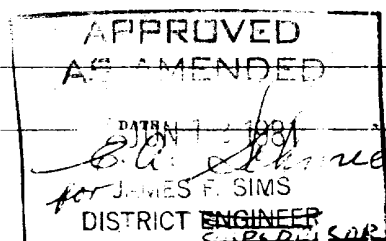
PERMIT NO.

APPROVAL DATE

APPROVED BY

TITLE

CONDITIONS OF APPROVAL, IF ANY:



*See Instructions On Reverse Side

NEW MEXICO OIL CONSERVATION COMMISSION
WELL LOCATION AND ACREAGE DEDICATION PLAT

Form C-104
Supersedes C-124
Effective 1-1-83

All distances must be from the outer boundaries of the Section.

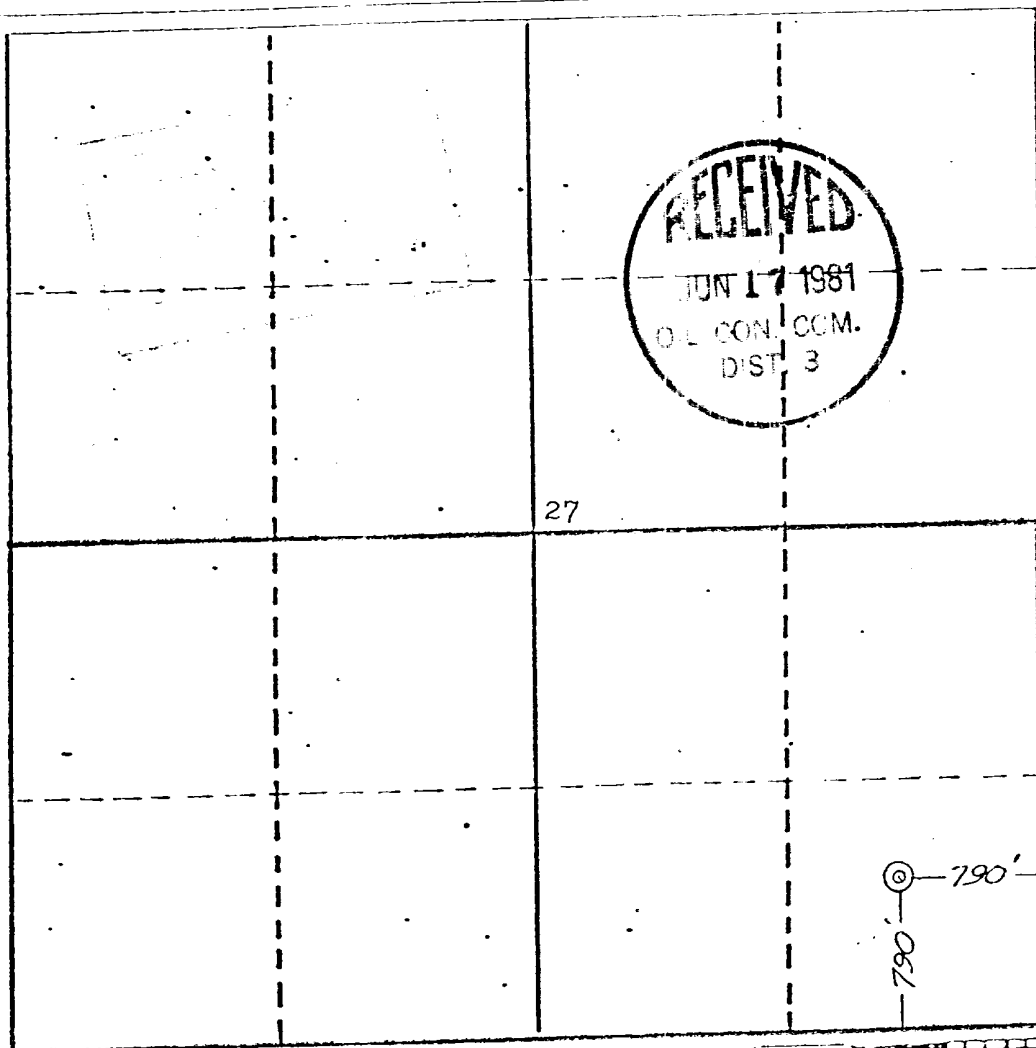
GULF OIL CORPORATION		Lease DOUTHIT C FEDERAL		Well No. #2 E
Unit Letter P	Section 27	Township 27 NORTH	Range 11 WEST	County SAN JUAN
Actual Footage Location of Well: 790 feet from the SOUTH line and 790 feet from the EAST line				
Ground Level Elev. 6391	Producing Formation Dakota	Pool Basin Dakota	Dedicated Acreage 320 Acres	

1. Outline the acreage dedicated to the subject well by colored pencil or hatchure marks on the plat below.
2. If more than one lease is dedicated to the well, outline each and identify the ownership thereof (both as to working interest and royalty).
3. If more than one lease of different ownership is dedicated to the well, have the interests of all owners been consolidated by communization, unitization, force-pooling, etc?

☐ Yes ☐ No If answer is "yes," type of consolidation _____

If answer is "no," list the owners and tract descriptions which have actually been consolidated. (Use reverse side of this form if necessary.) _____

No allowable will be assigned to the well until all interests have been consolidated (by communization, unitization, forced-pooling, or otherwise) or until a non-standard unit, eliminating such interests, has been approved by the Commission.



CERTIFICATION

I hereby certify that the information contained herein is true and complete to the best of my knowledge and belief.

R. C. Anderson

Name _____

R. C. Anderson

Position _____

Area Production Manager

Company _____

Gulf Oil Corporation

Date _____

5-19-81

I hereby certify that the well location shown on this plat was plotted from field notes of actual surveys made by me or under my supervision and that the same is true and correct to the best of my knowledge and belief.

Michael Daly

Date Surveyed _____

February 24, 1981

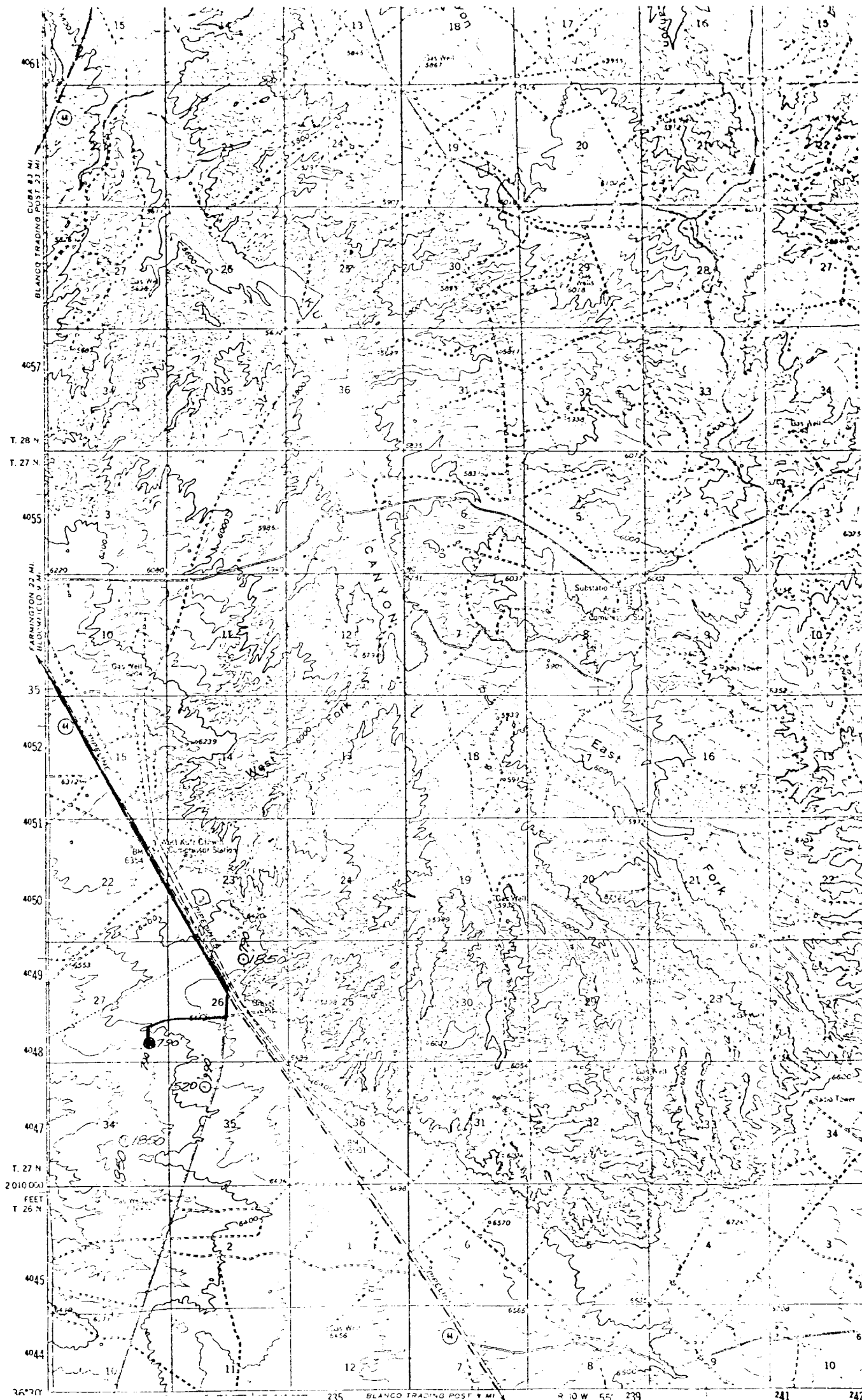
Registered Professional Engineer and/or Land Surveyor

Michael Daly

Certificate No. _____

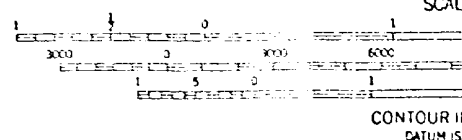
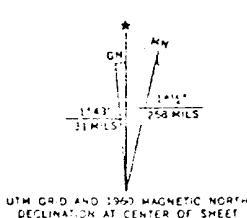
5992

0 120 240 360 480 600 720 840 960 1080 1200 1320 1440 1560 1680 1800 1920 2040 2160 2280 2400 2520 2640 2760 2880 3000



GULF OIL CORPORATION
 Douthitt C Federal #2 E
 SE $\frac{1}{4}$ Sec. 27, T. 27 N, R. 11 W, N.M.P.M
 SAN JUAN COUNTY, NEW MEXICO

west zone
 1000 meter Universal Transverse Mercator grid ticks,
 zone 13, shown in blue



CONTOUR II
 DATUM IS

EXHIBIT "B"

THIS MAP COMPLIES WITH NA
 FOR SALE BY U. S. GEOLOGICAL SURVEY, DEN
 A FOLDER DESCRIBING TOPOGRAPHIC N