

UNITED STATES
DEPARTMENT OF THE INTERIOR
GEOLOGICAL SURVEY

APPLICATION FOR PERMIT TO DRILL, DEEPEN, OR PLUG BACK

1a. TYPE OF WORK

DRILL ☒DEEPEN ☐PLUG BACK ☐

b. TYPE OF WELL

OIL
WELL ☐GAS
WELL ☒OTHER ☐SINGLE
ZONE ☒MULTIPLE
ZONE ☐

2. NAME OF OPERATOR

SUPRON ENERGY CORPORATION

3. ADDRESS OF OPERATOR

P.O. Box 808, Farmington, New Mexico 87401

4. LOCATION OF WELL (Report location clearly and in accordance with any State requirements.)

At surface

790 ft./South line and 990 ft./West line

At proposed prod. zone

Same as above

14. DISTANCE IN MILES AND DIRECTION FROM NEAREST TOWN OR POST OFFICE*

7 miles south of Farmington, New Mexico

15. DISTANCE FROM PROPOSED*

LOCATION TO NEAREST 790 ft.

PROPERTY OR LEASE LINE, FT. 790 ft.

(Also to nearest drlg. unit line, if any)

18. DISTANCE FROM PROPOSED LOCATION*

TO NEAREST WELL, DRILLING, COMPLETED,

OR APPLIED FOR, ON THIS LEASE, FT. 3,600 ft.

16. NO. OF ACRES IN LEASE

2278.20

19. PROPOSED DEPTH

6300 ft.

17. NO. OF ACRES ASSIGNED
TO THIS WELL

5 320.00

20. ROTARY OR CABLE TOOLS

Rotary

21. ELEVATIONS (Show whether DF, RT, GR, etc.)

5970 Gr.

22. APPROX. DATE WORK WILL START*

July 30, 1981

23.

PROPOSED CASING AND CEMENTING PROGRAM

SIZE OF HOLE	SIZE OF CASING	WEIGHT PER FOOT	SETTING DEPTH	QUANTITY OF CEMENT
12-1/4"	8-5/8"	24.00#	250 ft.	150 sx circulated
7-7/8"	4-1/2"	10.50#	6300 ft.	900 sx cover the Ojo Alamo

We desire to drill 12 1/4" surface hole to approx. 250 ft. using natural mud as circulating medium. Run new 8-5/8", 24.00# casing to T.D. and cement in place. Circulate the cement back to surface. Pressure test the pipe. Drill 7-7/8" hole to approx. 6300 ft. using a permaloid, non-dispersed starch base mud as the circulating medium. Log the well. Run new 4 1/2", 10.50# casing to T.D. with D.V. tools at approx. 4250 ft. and 1600 ft. Cement as follows: 1st stage approx. 350 sx of 50-50 POZ. 2nd stage approx. 250 sx of 50-50 POZ followed by approx. 50 sx of class "B". 3rd stage approx. 150 sx of 65-35 POZ followed by approx. 100 sx of 50-50 POZ to cover the Ojo Alamo. Drill out the D.V. tools. Pressure test the casing, perforate and fracture the Dakota zone. Clean the well up and run tubing to the Dakota perforations. Nipple down the wellhead. Test the well and connect to a gathering system.

The gas from this well has previously been dedicated to a transporter.

IN ABOVE SPACE DESCRIBE PROPOSED PROGRAM: If proposal is to deepen or plug back, give data on present productive zone and proposed new productive zone. If proposal is to drill or deepen directionally, give pertinent data on subsurface locations and measured and true vertical depths. See blowout preventer program, if any.

24.

SIGNED

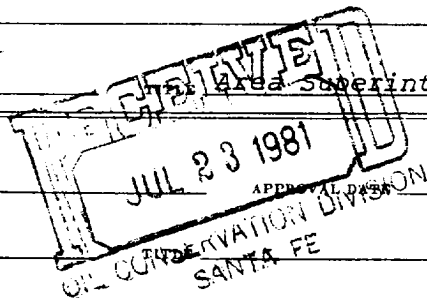
Rudy D. Motto

(This space for Federal or State office use)

PERMIT NO.

APPROVED BY

CONDITIONS OF APPROVAL, IF ANY:



OIL CON. COM.

DIST 3

DATE June 23, 1981

for [Signature] DISTRICT ENGINEER

All distances must be from the outer boundaries of the Section.

Operator SUPRON ENERGY CORPORATION			Lease RICHARDSON		Well No. 4E
Unit Letter M	Section 3	Township 27 NORTH	Range 13 WEST	County SAN JUAN	
Actual Footage Location of Well: 790 feet from the SOUTH line and 990 feet from the WEST line					
Ground Level Elev. 5970	Producing Formation Dakota	Pool Basin	Dedicated Acreage: 5 1/2 320.00 Acres:		

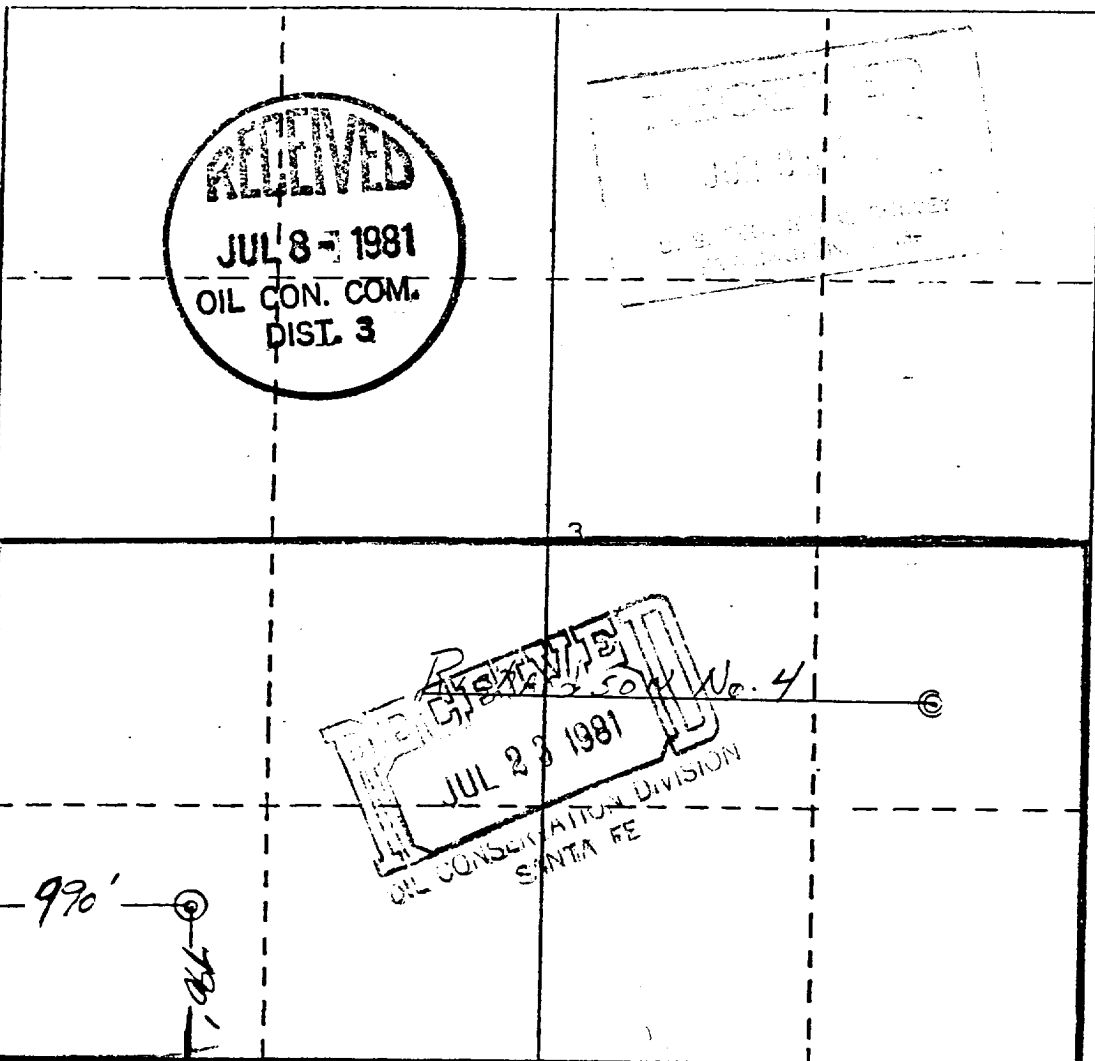
1. Outline the acreage dedicated to the subject well by colored pencil or hatchure marks on the plat below.
2. If more than one lease is dedicated to the well, outline each and identify the ownership thereof (both as to working interest and royalty).
3. If more than one lease of different ownership is dedicated to the well, have the interests of all owners been consolidated by communitization, unitization, force-pooling, etc?

☐ Yes ☐ No If answer is "yes," type of consolidation _____

If answer is "no," list the owners and tract descriptions which have actually been consolidated. (Use reverse side of this form if necessary.) _____

No allowable will be assigned to the well until all interests have been consolidated (by communitization, unitization, forced-pooling, or otherwise) or until a non-standard unit, eliminating such interests, has been approved by the Division.

RECEIVED
DEC 2 1983
OIL CON. DIV.
DIST. 3



CERTIFICATION

I hereby certify that the information contained herein is true and complete to the best of my knowledge and belief.

Rudy D. Motto
Name

Rudy D. Motto

Position

Area Superintendent

Company

SUPRON ENERGY CORPORATION

Date

June 23, 1981

MICHAEL DALY
I hereby certify that the well location shown on this plat was plotted from field notes or surveys made by me or under my supervision and that the same is true to the best of my knowledge and belief.

Date Surveyed

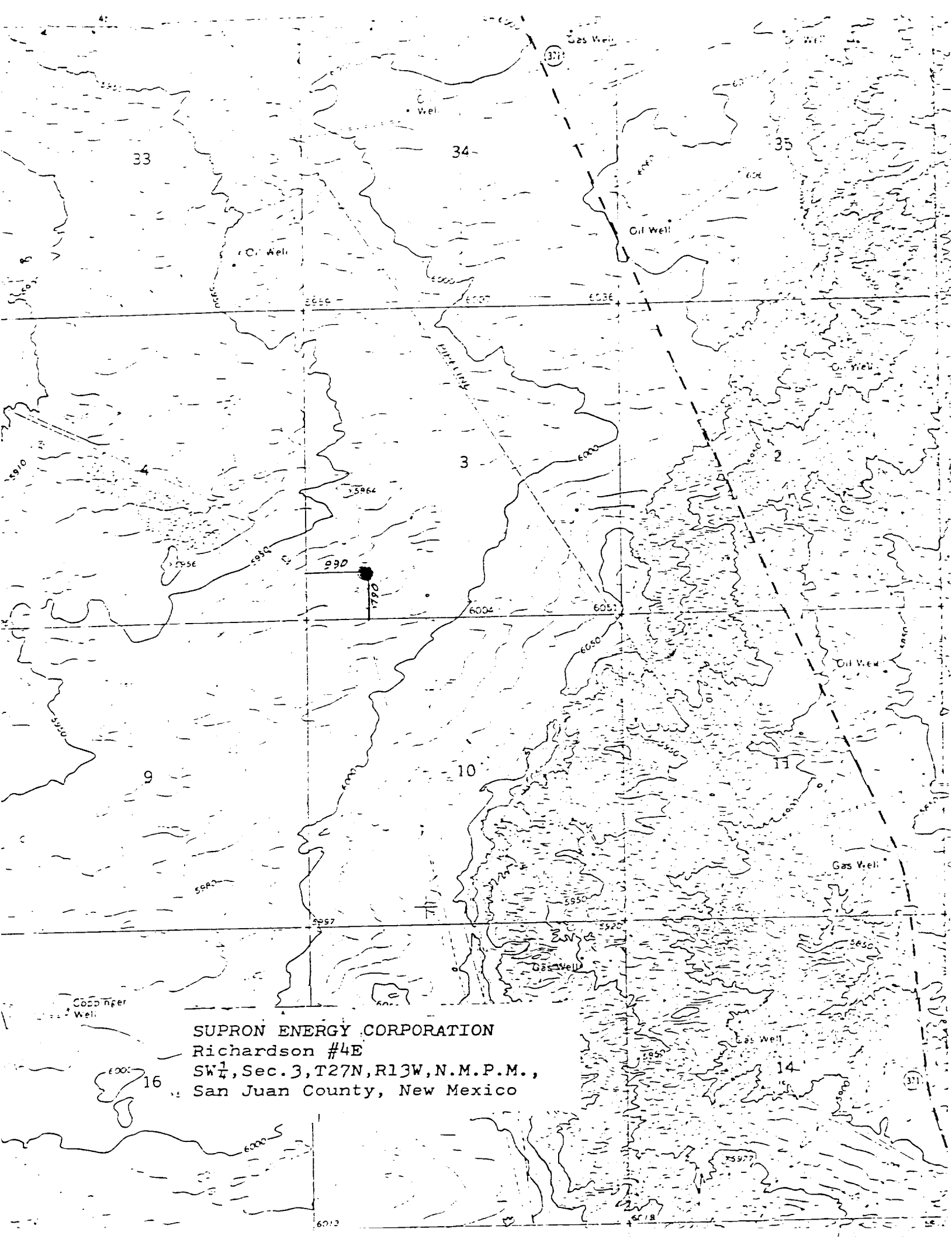
May 15, 1981

Registered Professional Engineer and/or Land Surveyor

Michael Daly

Certificate No.

5992



SUPRON ENERGY CORPORATION
Richardson #4E
SW 1/4, Sec. 3, T27N, R13W, N.M.P.M.,
San Juan County, New Mexico