

UNITED STATES  
DEPARTMENT OF THE INTERIOR  
GEOLOGICAL SURVEY

30-045-25150

5. LEASE DESIGNATION AND SERIAL NO.

SF-078019

6. IF INDIAN, ALLOTTEE OR TRIBE NAME

7. UNIT AGREEMENT NAME

8. FARM OR LEASE NAME

E. H. Pipkin

9. WELL NO.

17

10. FIELD AND POOL, OR WILDCAT

Kutz Fruitland &amp; West Kutz

11. SEC., T., R., M., OR BLK. AND SURVEY OR AREA

Sec. 1, T27N-R11W

12. COUNTY OR PARISH 13. STATE

San Juan N. Mexico

1a. TYPE OF WORK

DRILL ☒DEEPEN ☐PLUG BACK ☐

b. TYPE OF WELL

OIL  
WELL ☐GAS  
WELL ☒

OTHER

SINGLE  
ZONE ☐MULTIPLE  
ZONE ☒

2. NAME OF OPERATOR

Energy Reserves Group, Inc.

3. ADDRESS OF OPERATOR

Box 3280, Casper, Wy. 82602

4. LOCATION OF WELL (Report location clearly and in accordance with any State requirements.)\*

At surface

At proposed prod. zone 1600' FSL 890' FWL (NW/SW)

14. DISTANCE IN MILES AND DIRECTION FROM NEAREST TOWN OR POST OFFICE\*

Approx. 7 miles South of Bloomfield, New Mexico

15. DISTANCE FROM PROPOSED\*

LOCATION TO NEAREST  
PROPERTY OR LEASE LINE, FT.  
(Also to nearest drlg. unit line, if any) 810'

16. NO. OF ACRES IN LEASE

2560.96

17. NO. OF ACRES ASSIGNED  
TO THIS WELL

160

18. DISTANCE FROM PROPOSED LOCATION\*  
TO NEAREST WELL, DRILLING, COMPLETED,  
OR APPLIED FOR, ON THIS LEASE, FT.

800

19. PROPOSED DEPTH

1,883'

20. ROTARY OR CABLE TOOLS

Rotary

21. ELEVATIONS (Show whether DF, RT, GR, etc.)

5,960' GR

22. APPROX. DATE WORK WILL START\*

July, 1981

23. PROPOSED CASING AND CEMENTING PROGRAM

SIZE OF HOLE	SIZE OF CASING	WEIGHT PER FOOT	SETTING DEPTH	QUANTITY OF CEMENT
9-7/8"	7"	17#	90'±	Cement to the surface
6-1/4"	4-1/2"	9.5#	1,883'±	Sufficient to protect the OGC Alamo Formation

IN ABOVE SPACE DESCRIBE PROPOSED PROGRAM: If proposal is to deepen or plug back, give data on present productive zone and proposed new productive zone. If proposal is to drill or deepen directionally, give pertinent data on subsurface locations and measured and true vertical depths. Give blowout preventer program, if any.

24.

SIGNED

TITLE Field Services Administrator DATE 7-14-81

(This space for Federal or State office use)

PERMIT NO.

APPROVAL DATE

APPROVED BY

TITLE

CONDITIONS OF APPROVAL, IF ANY:

NMOCC

APPROVED  
AS-AMENDED

DATE

AUG 17 1981

For JAMES F. Slivis  
DISTRICT ENGINEER

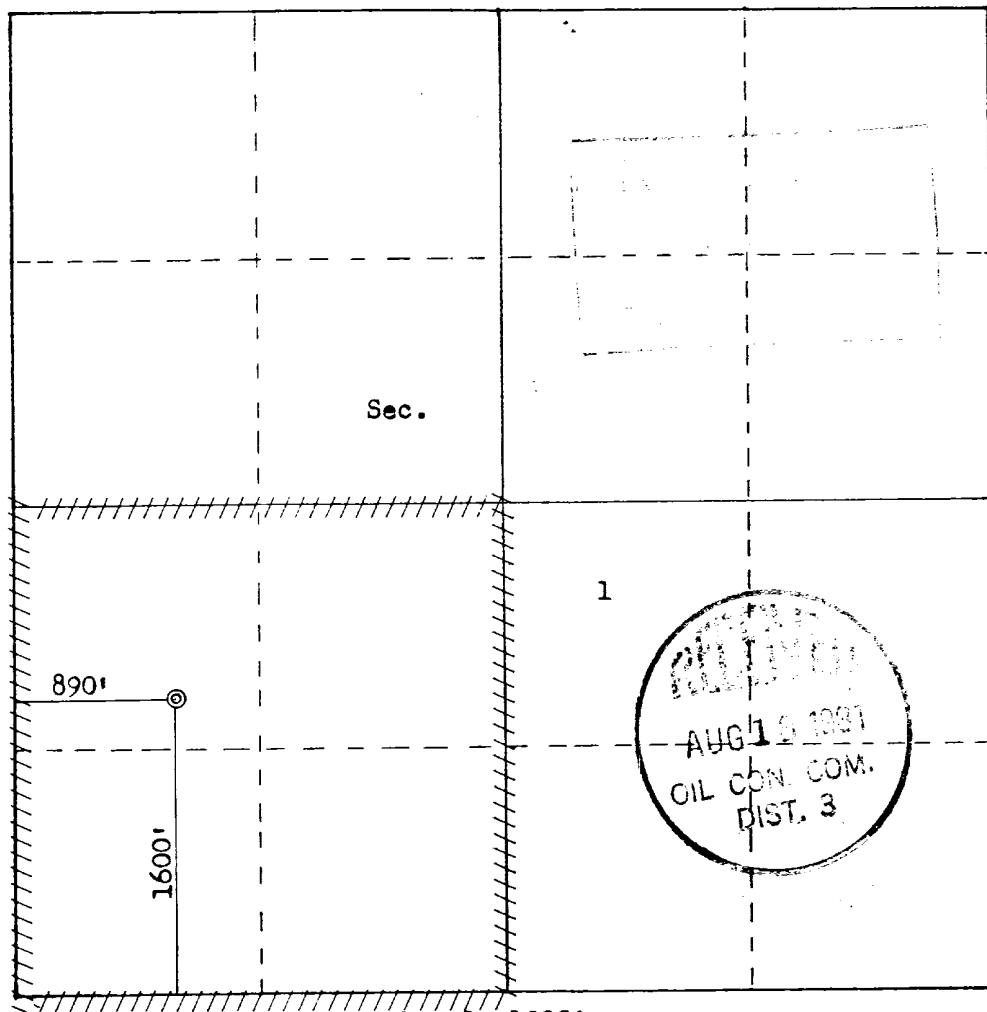
All distances must be from the outer boundaries of the Section.

Operator <b>ENERGY RESERVES GROUP</b>			Lease <b>E. H. PIPKIN</b>		Well No. <b>17</b>
Unit Letter <b>L</b>	Section <b>1</b>	Township <b>27N</b>	Range <b>11W</b>	County <b>San Juan</b>	
Actual Footage Location of Well: <b>1600</b> feet from the <b>South</b> line and <b>890</b> feet from the <b>West</b> line					
Ground Level Elev. <b>5960</b>	Producing Formation <b>Fruitland &amp; Pictured Cliffs</b>		Pool <b>Kutz Fruitland</b>		Dedicated Acreage: <b>160</b> Acres

1. Outline the acreage dedicated to the subject well by colored pencil or hachure marks on the plat below.
  2. If more than one lease is dedicated to the well, outline each and identify the ownership thereof (both as to working interest and royalty).
  3. If more than one lease of different ownership is dedicated to the well, have the interests of all owners been consolidated by communitization, unitization, force-pooling, etc?
- ☐ Yes ☐ No If answer is "yes," type of consolidation \_\_\_\_\_

If answer is "no," list the owners and tract descriptions which have actually been consolidated. (Use reverse side of this form if necessary.) \_\_\_\_\_

No allowable will be assigned to the well until all interests have been consolidated (by communitization, unitization, forced-pooling, or otherwise) or until a non-standard unit, eliminating such interests, has been approved by the Commission.



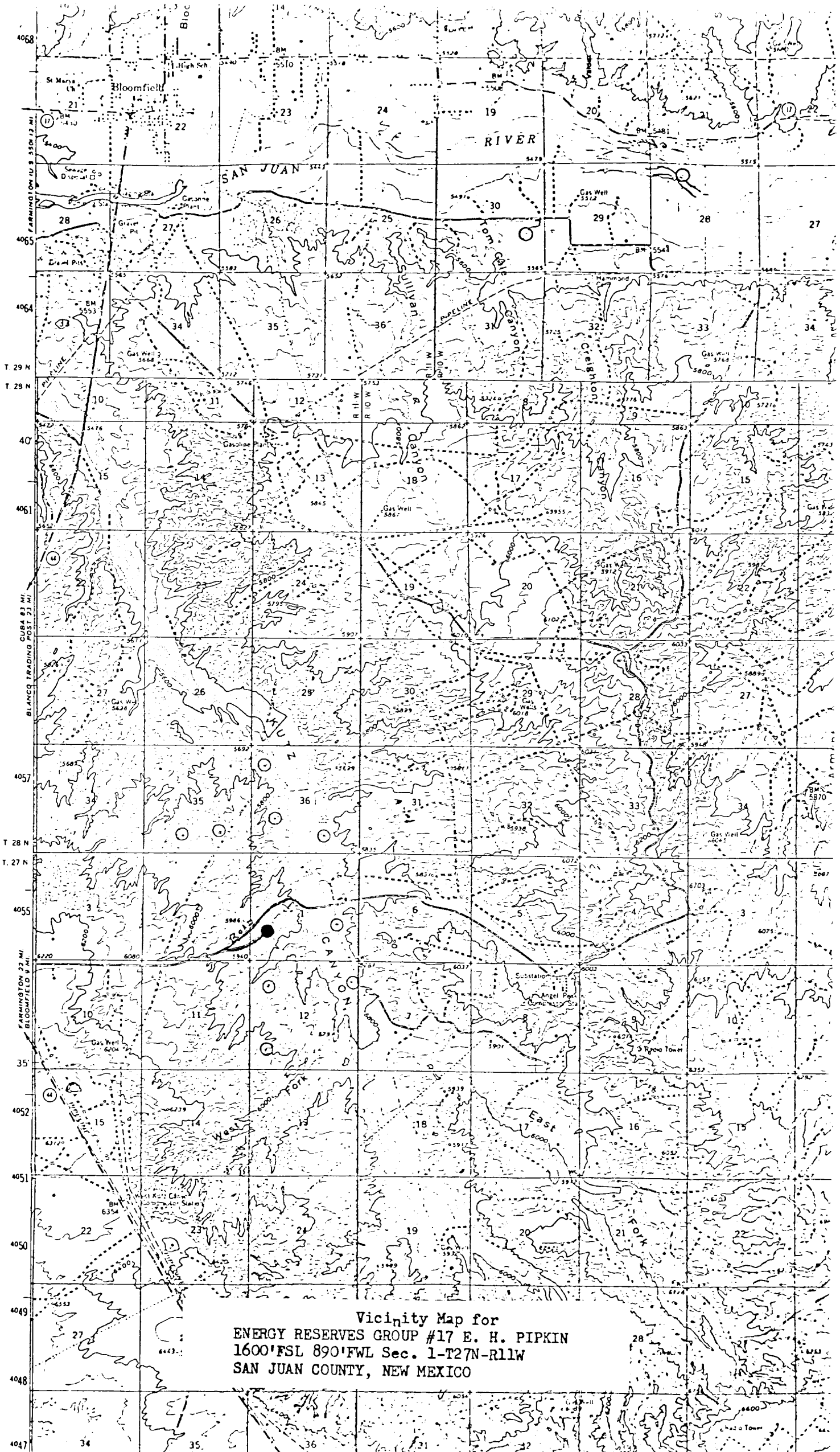
CERTIFICATION

I hereby certify that the information contained herein is true and complete to the best of my knowledge and belief.

Name William J. Hays  
Position  
Field Services Administrator  
Company  
Energy Reserves Group, Inc.  
Date

I hereby certify that the well location shown on this plat was plotted from field notes of actual surveys made by me or under my supervision, and that the same is true and correct to the best of my knowledge and belief.

Date Surveyed  
**June 4, 1981**  
Registered Professional Engineer and Land Surveyor  
Fred B. Kerr, Jr.  
Certification No. **3950**  
State of New Mexico  
FERR. JR. FORM C-11



Vicinity Map for  
ENERGY RESERVES GROUP #17 E. H. PIPKIN  
1600' FSL 890' FWL Sec. 1-T27N-R11W  
SAN JUAN COUNTY, NEW MEXICO