

UNITED STATES  
DEPARTMENT OF THE INTERIOR  
GEOLOGICAL SURVEY

## APPLICATION FOR PERMIT TO DRILL, DEEPEN, OR PLUG BACK

## 1a. TYPE OF WORK

DRILL ☒DEEPEN ☐PLUG BACK ☐

## b. TYPE OF WELL

OIL  
WELL ☐GAS  
WELL ☒

OTHER

SINGLE  
ZONE ☐MULTIPLE  
ZONE ☒

## 2. NAME OF OPERATOR

Energy Reserves Group, Inc.

## 3. ADDRESS OF OPERATOR

Box 3280, Casper, Wy. 82602

## 4. LOCATION OF WELL (Report location clearly and in accordance with any State requirements.)\*

At surface

1100' FNL 810' FWL (NW/NW)

At proposed prod. zone

## 14. DISTANCE IN MILES AND DIRECTION FROM NEAREST TOWN OR POST OFFICE\*

Approx. 7 miles South of Bloomfield, New Mexico

## 15. DISTANCE FROM PROPOSED\*

LOCATION TO NEAREST

PROPERTY OR LEASE LINE, FT.

(Also to nearest drlg. unit line, if any)

810'

## 18. DISTANCE FROM PROPOSED LOCATION\*

TO NEAREST WELL, DRILLING, COMPLETED,  
OR APPLIED FOR, ON THIS LEASE, FT.

500'

## 16. NO. OF ACRES IN LEASE

2560.96

## 19. PROPOSED DEPTH

1,690'

17. NO. OF ACRES ASSIGNED  
TO THIS WELL

160

## 20. ROTARY OR CABLE TOOLS

Rotary

## 21. ELEVATIONS (Show whether DF, RT, GR, etc.)

5,917' GR

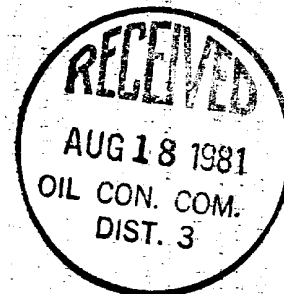
## 22. APPROX. DATE WORK WILL START\*

July, 1981

## 23.

## PROPOSED CASING AND CEMENTING PROGRAM

SIZE OF HOLE	SIZE OF CASING	WEIGHT PER FOOT	SETTING DEPTH	QUANTITY OF CEMENT
9-7/8"	7"	17#	90'±	Cement to the surface
6-1/4"	4-1/2"	9.5#	1,690'±	Sufficient to protect the OJO Alamo Formation

DRILLING OPERATIONS AUTHORIZED ARE  
SUBJECT TO COMPLIANCE WITH ATTACHED  
"GENERAL REQUIREMENTS"This action is subject to administrative  
appeal pursuant to 30 CFR 290.

IN ABOVE SPACE DESCRIBE PROPOSED PROGRAM: If proposal is to deepen or plug back, give data on present productive zone and proposed new productive zone. If proposal is to drill or deepen directionally, give pertinent data on subsurface locations and measured and true vertical depths. Give blowout preventer program, if any.

## 24.

SIGNED

TITLE

Field Services Administrator

DATE

7-15-81

(This space for Federal or State office use)

PERMIT NO.

APPROVAL DATE

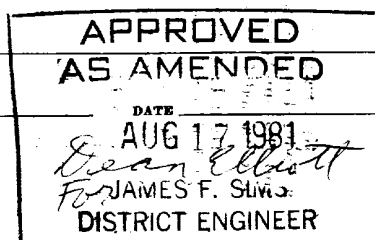
APPROVED BY

TITLE

CONDITIONS OF APPROVAL, IF ANY:

ch 7

NMOCC



OIL CONSERVATION DIVISION

P. O. BOX 2088

SANTA FE, NEW MEXICO 87501

Form C-107  
Revised 10-1-78

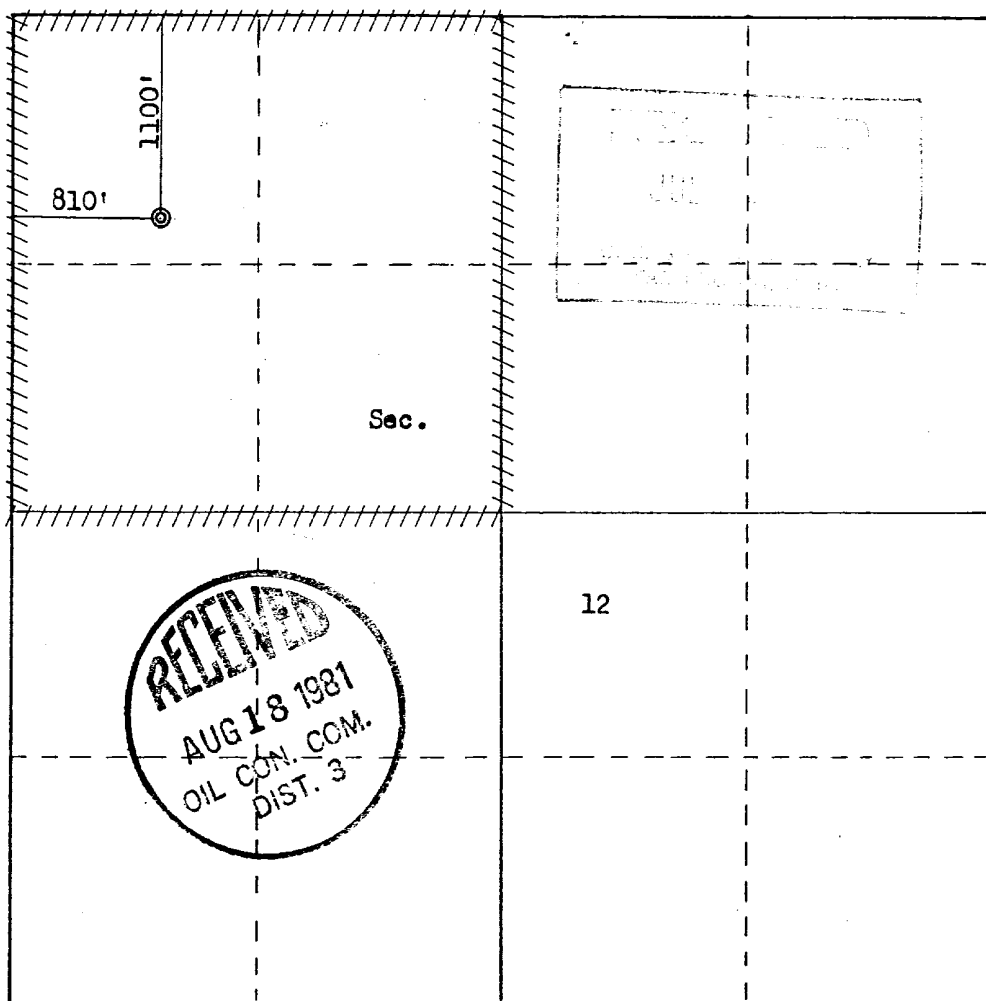
All distances must be from the outer boundaries of the Section.

Operator <b>ENERGY RESERVES GROUP</b>			Lease <b>E. H. PIPKIN</b>		Well No. <b>19</b>
Unit Letter <b>D</b>	Section <b>12</b>	Township <b>27N</b>	Range <b>11W</b>	County <b>San Juan</b>	
Actual Footage Location of Well: <b>1100</b> feet from the <b>North</b> line and <b>810</b> feet from the <b>West</b> line					
Ground Level Elev: <b>5917</b>	Producing Formation <b>Fruitland &amp; Pictured Cliffs</b>		Pool Kutz Fruitland <b>West Kutz Pictured Cliffs</b>		Dedicated Acreage: <b>160</b> Acres

- Outline the acreage dedicated to the subject well by colored pencil or hatchure marks on the plat below.
- If more than one lease is dedicated to the well, outline each and identify the ownership thereof (both as to working interest and royalty).
- If more than one lease of different ownership is dedicated to the well, have the interests of all owners been consolidated by communitization, unitization, force-pooling, etc?  
☐ Yes ☐ No If answer is "yes," type of consolidation \_\_\_\_\_

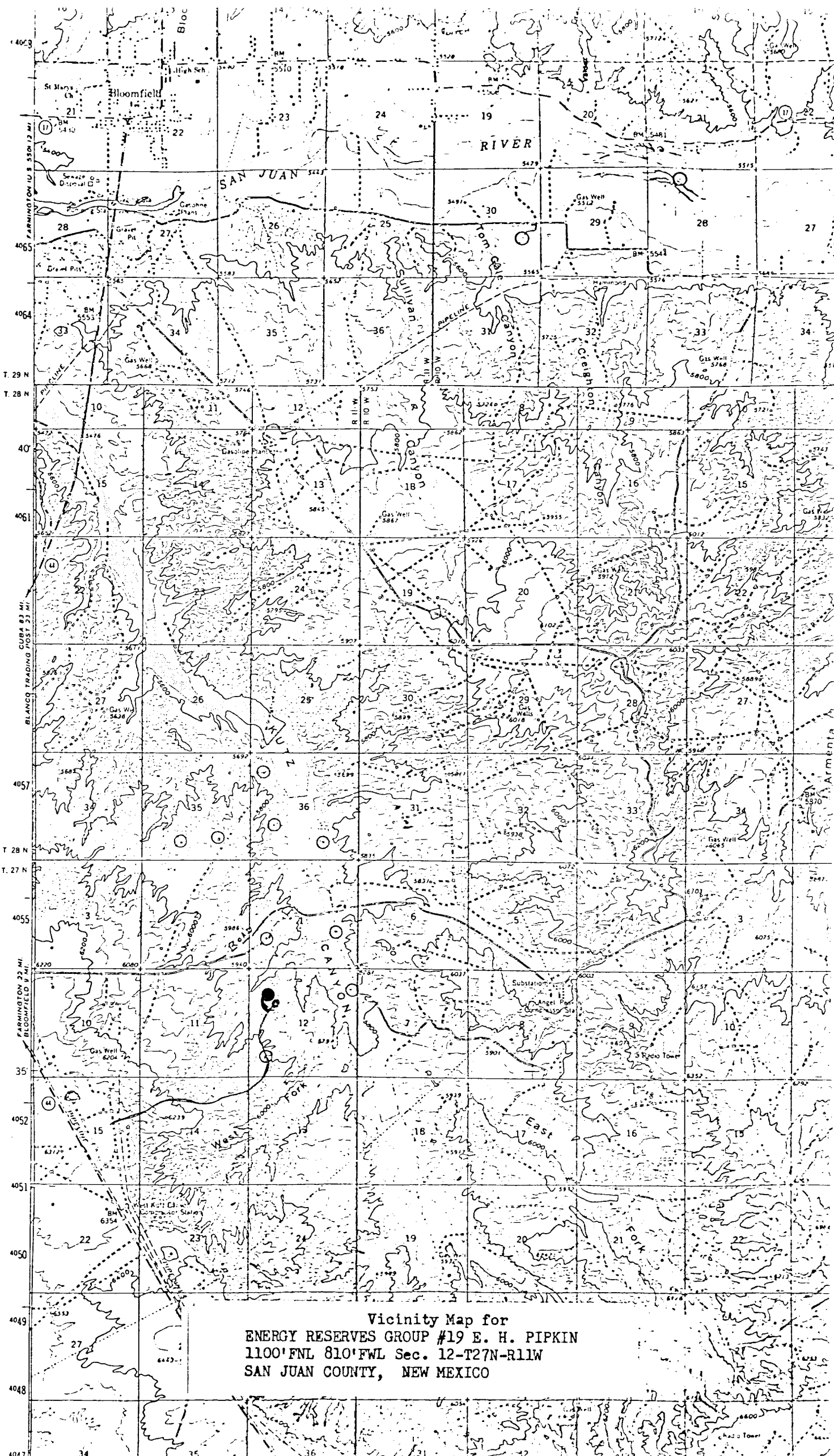
If answer is "no," list the owners and tract descriptions which have actually been consolidated. (Use reverse side of this form if necessary.) \_\_\_\_\_

No allowable will be assigned to the well until all interests have been consolidated (by communitization, unitization, forced-pooling, or otherwise) or until a non-standard unit, eliminating such interests, has been approved by the Commission.



Scale: 1"=1000'

CERTIFICATION	
I hereby certify that the information contained herein is true and complete to the best of my knowledge and belief.	
Name <i>William J. Kerr</i>	
Position Field Services Administrator	
Company Energy Reserves Group, Inc.	
Date July 14, 1981	
I hereby certify that the well location shown on this plat was plotted from field notes of actual surveys made by me or under my supervision, and that the same is true and correct to the best of my knowledge and belief.	
Date Surveyed June 14, 1981	
Registered Professional Engineer and Land Surveyor <i>Fred B. Kerr Jr.</i>	
Certificate No. 3950	



Vicinity Map for  
ENERGY RESERVES GROUP #19 E. H. PIPKIN  
1100'FNL 810'FWL Sec. 12-T27N-R11W  
SAN JUAN COUNTY, NEW MEXICO