

UNITED STATES
DEPARTMENT OF THE INTERIOR
GEOLOGICAL SURVEY

30-045-25154

5. LEASE IDENTIFICATION AND SERIAL NO.

NM 05671

6. IF INDIAN, ALLIANCE OR TRIBE NAME

7. UNIT AGREEMENT NAME

8. FARM OR LEASE NAME

Riddle Com

9. WELL NO.

7

10. FIELD AND POOL, OR WILDCAT

Basin Dakota

11. SEC., T., R., M., OR BLM.
AND SURVEY OR AREA

Sec. 8, T28N, R8W

12. COUNTY OR PARISH 13. STATE

San Juan

N.M.

APPLICATION FOR PERMIT TO DRILL, DEEPEN, OR PLUG BACK

1a. TYPE OF WORK

DRILL ☒

DEEPEN ☐

PLUG BACK ☐

b. TYPE OF WELL

OIL
WELL ☐

GAS
WELL ☒

OTHER

SINGLE
ZONE ☒

MULTIPLE
ZONE ☐

2. NAME OF OPERATOR

Tenneco Oil Company

3. ADDRESS OF OPERATOR

720 So. Colorado Blvd., Denver, Colorado 80222

4. LOCATION OF WELL (Report location clearly and in accordance with any State requirements.)

At surface 1700 FSL, 1750 FWL

At proposed prod. zone

same as above

14. DISTANCE IN MILES AND DIRECTION FROM NEAREST TOWN OR POST OFFICE*

Approximately 8 miles ESE of Blanco, N.M.

15. DISTANCE FROM PROPOSED*

LOCATION TO NEAREST

PROPERTY OF LEASE LINE, FT.

(Also to nearest drill unit line, if any)

approx. 800'

16. NO. OF ACRES IN LEASE

111.74

17. NO. OF ACRES ASSIGNED

TO THIS WELL

341.36

18. DISTANCE FROM PROPOSED LOCATION*

TO NEAREST WELL DRILLING COMPLETION

OR ABANDONED ON THIS LEASE, FT.

19. PROPOSED DEPTH

±6778'

20. ROTARY OR CABLE TOOLS

Rotary

21. REMARKS (Show whether DF, HT, GR, etc.)

5872' GR

22. APPROX. DATE WORK WILL START*

May 1981

23. PROPOSED CASING AND CEMENTING PROGRAM

SIZE OF HOLE	SIZE OF CASING	WEIGHT PER FOOT	SETTING DEPTH	QUANTITY OF CEMENT
12 1/4"	9 5/8" new	36#	±300'	Circulate to surface
8 3/4"	7" new	23#	±2890'	Circulate to surface
6 1/4"	4 1/2" new	11.6#, 10.5#	±6778'	Circulate to liner top

See attached.

The gas is dedicated.



IN ABOVE SPACE DESCRIBE PROPOSED PROGRAM: If proposal is to deepen or plug back, give data on present productive zone and proposed new productive zone. If proposal is to drill or deepen directionally, give pertinent data on subsurface locations and measured and true vertical depths. Give blowout preventer program, if any.

24.

SIGNED

R.A. Mishler

TITLE Sr. Production Analyst

DATE Sept. 29, 1980

(This space for Federal or State office use)

PERMIT NO.

APPROVAL DATE

APPROVED BY

TITLE

DATE

CONDITIONS OF APPROVAL, IF ANY:

NWU R-1814

27

*See Instructions On Reverse Side

NMOCC

Approved
Nov 3 1980
C. R. Miller

**NEW MEXICO OIL CONSERVATION COMMISSION
WELL LOCATION AND ACREAGE DEDICATION PLAT**

Form C-102
Supersedes C-128
Effective 1-1-65

All distances must be from the outer boundaries of the Section

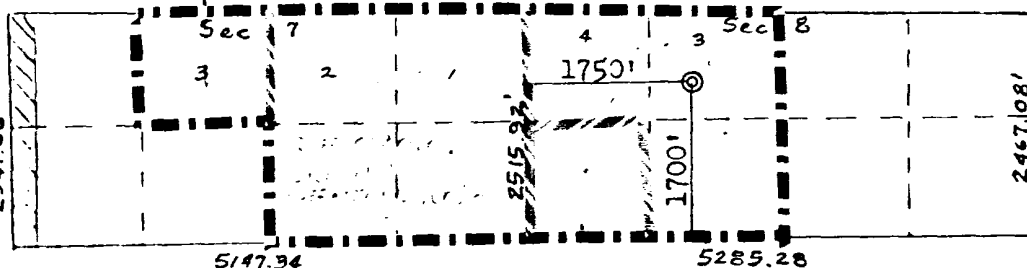
Operator TENNECO OIL COMPANY			Lease RIDDLE COM		Well No. 7
Unit Letter K	Section 8	Township 28N	Range 8W	County San Juan	
Actual Footage Location of Well: 1700 feet from the South line and 1750 feet from the West line					
Ground Level Elev: 5872	Producing Formation San Juan		Pool San Juan	Dedicated Acreage: 341.36 Acres	

1. Outline the acreage dedicated to the subject well by colored pencil or hachure marks on the plat below.
2. If more than one lease is dedicated to the well, outline each and identify the ownership thereof (both as to working interest and royalty).
3. If more than one lease of different ownership is dedicated to the well, have the interests of all owners been consolidated by communitization, unitization, force-pooling, etc?

☐ Yes ☐ No If answer is "yes," type of consolidation _____

If answer is "no," list the owners and tract descriptions which have actually been consolidated. (Use reverse side of this form if necessary.) _____

No allowable will be assigned to the well until all interests have been consolidated (by communitization, unitization, forced-pooling, or otherwise) or until a non-standard unit, eliminating such interests, has been approved by the Commission.



Dedication: Lots 1,2,3 and S/2 SE/4 Sec. 7
 Lots 3,4 and S/2 SW/4 Sec. 8

Scale: 1"=2000'

CERTIFICATION

I hereby certify that the information contained herein is true and complete to the best of my knowledge and belief.

Name
R. A. Mishler
Position
Sr. Production Analyst
Company
Tenneco Oil Company
Date
September 29, 1980

I hereby certify that the well location shown on this plat was plotted from field notes of actual surveys made by me or under my supervision, and that the same is true and correct to the best of my knowledge and belief.

	Date Surveyed
	March 25, 1980
	Registered Professional Engineer and Land Surveyor
	Fred B. Berry, Jr.
Certificate No.	
2050	