

UNITED STATES
DEPARTMENT OF THE INTERIOR
GEOLOGICAL SURVEY

APPLICATION FOR PERMIT TO DRILL, DEEPEN, OR PLUG BACK

1a. TYPE OF WORK
DRILL ☒ DEEPEN ☐ PLUG BACK ☐
b. TYPE OF WELL
OIL WELL ☒ GAS WELL ☐ OTHER ☐ SINGLE ZONE ☒ MULTIPLE ZONE ☐2. NAME OF OPERATOR
John F. Staver dba Saguaro Oil Company3. ADDRESS OF OPERATOR
P.O. Box 51 Farmington, New Mexico 874014. LOCATION OF WELL (Report location clearly and in accordance with any State requirements.*)
At surface
SENNW: ~~4483~~ FNL, 4489' FWL
At proposed prod. zone
same 1268 11-14-81 (F. Kerr)14. DISTANCE IN MILES AND DIRECTION FROM NEAREST TOWN OR POST OFFICE*
Fifteen (15) miles south of Shiprock, New Mexico15. DISTANCE FROM PROPOSED*
LOCATION TO NEAREST
PROPERTY OR LEASE LINE, FT.
(Also to nearest drlg. unit line, if any) 2300'
18. DISTANCE FROM PROPOSED LOCATION*
TO NEAREST WELL, DRILLING, COMPLETED,
OR APPLIED FOR, ON THIS LEASE, FT. 1650'21. ELEVATIONS (Show whether DF, RT, GR, etc.)
5369' Ground

23. PROPOSED CASING AND CEMENTING PROGRAM

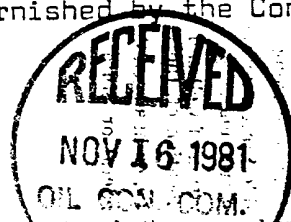
SIZE OF HOLE	SIZE OF CASING	WEIGHT PER FOOT	SETTING DEPTH	QUANTITY OF CEMENT
11"	8 5/8"	24.00	20'	5 sx
7 7/8"	5 1/2"	17.00	690'	35 sx

If commercial production is obtained, 4" liner will be set and cemented at total depth.

Propose to drill and test the upper bench of the Dakota sandstone.

If commercial production is obtained, necessary production equipment will be installed and the well completed.

Adequate Blowout Prevention equipment will be furnished by the Contractor
The Field is a low pressure deleted area.



IN ABOVE SPACE DESCRIBE PROPOSED PROGRAM: If proposal is to deepen or plug back, give data on present productive zone and proposed new productive zone. If proposal is to drill or deepen directionally, give pertinent data on subsurface locations and measured and true vertical depths. Give blowout preventer program, if any.

24. SIGNED John Cunningham TITLE President- Manager DATE June 22, 1976

(This space for Federal or State office use)

PERMIT NO. APPROVED APPROVAL DATE JUL 27 1976APPROVED BY M. L. S. TITLE 100

CONDITIONS OF APPROVAL, IF ANY:

U. S. GEOLOGICAL SURVEY
FARMINGTON, N. M.

OIL CONSERVATION DIVISION

P. O. BOX 2088

STATE OF NEW MEXICO
ENERGY AND MINERALS DEPARTMENT

SANTA FE, NEW MEXICO 87501

Form O-102
Revised 10-1-70

All distances must be from the outer boundaries of the Section.

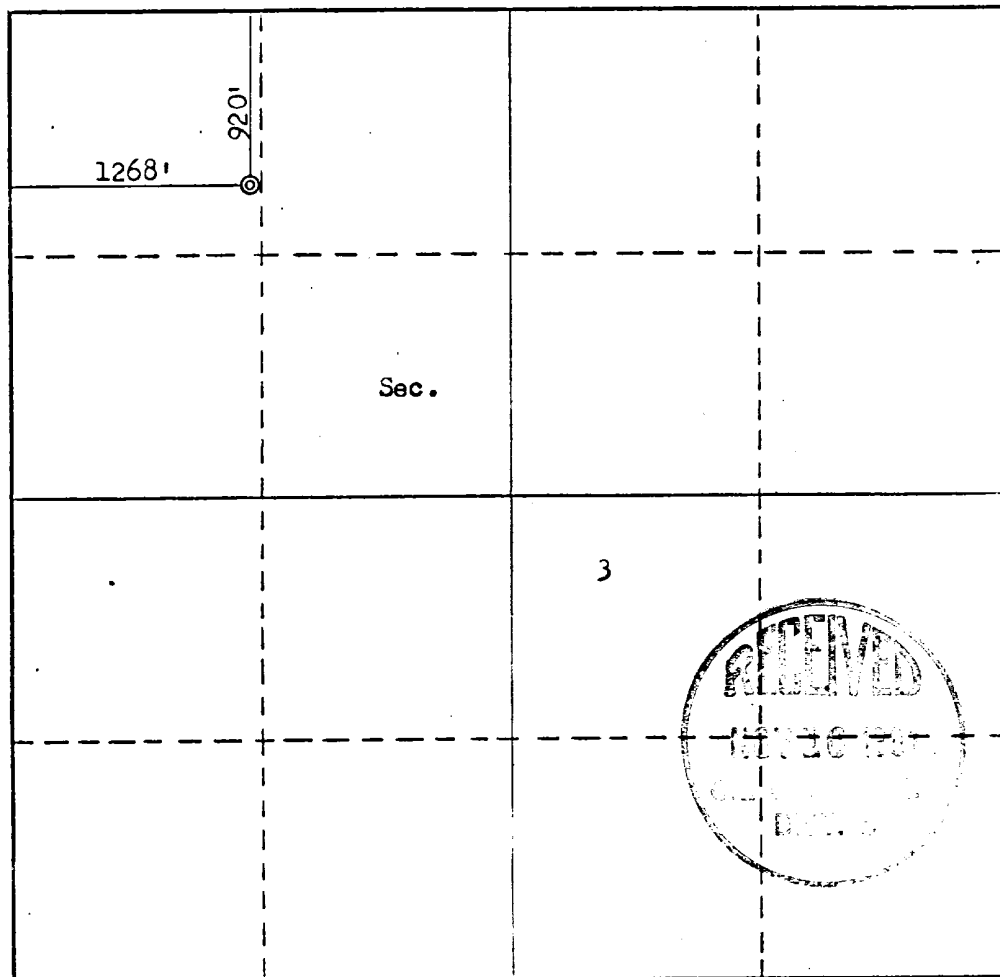
Operator JOHN F. STAVER			Lease NO. 2A I-21-2nd-57 STAVER-TABLE MESA		Well No. 3
Unit Letter D	Section 3	Township 27N	Range 17W	County San Juan	
Actual Footage Location of Well: 920 feet from the North line and 1268 feet from the West line					
Ground Level Elev. 5369	Producing Formation ROMO		Pool TABLE MESA		Dedicated Acreage: 4 Acres

1. Outline the acreage dedicated to the subject well by colored pencil or hachure marks on the plat below.
2. If more than one lease is dedicated to the well, outline each and identify the ownership thereof (both as to working interest and royalty).
3. If more than one lease of different ownership is dedicated to the well, have the interests of all owners been consolidated by communitization, unitization, force-pooling, etc?

☐ Yes ☐ No If answer is "yes," type of consolidation _____

If answer is "no," list the owners and tract descriptions which have actually been consolidated. (Use reverse side of this form if necessary.) _____

No allowable will be assigned to the well until all interests have been consolidated (by communitization, unitization, forced-pooling, or otherwise) or until a non-standard unit, eliminating such interests, has been approved by the Commission.



CERTIFICATION

I hereby certify that the information contained herein is true and complete to the best of my knowledge and belief.

Name *M. B. Kerr, Jr.*
Position *Reg. Prof. & Surveyor*
Company *John F. Staver*
Date *11-19-81*

I hereby certify that the well location shown on this plat was plotted from field notes of actual surveys made by me or under my supervision, and that the same is true and correct to the best of my knowledge and belief.

Completed Well

Date Surveyed *November 1981*
Registered Professional Engineer and/or Land Surveyor
Fred B. Kerr, Jr.
Certificate No. *3950*