

UNITED STATES
DEPARTMENT OF THE INTERIOR
GEOLOGICAL SURVEY30-045-25382
5. LEASE DESIGNATION AND SERIAL NO.
SF-077874

APPLICATION FOR PERMIT TO DRILL, DEEPEN, OR PLUG BACK

1a. TYPE OF WORK

DRILL ☒DEEPEN ☐PLUG ☐

b. TYPE OF WELL

OIL
WELL ☐GAS
WELL ☒

OTHER

SINGLE
ZONE ☐MULTI
ZONE ☐

2. NAME OF OPERATOR

Southland Royalty Company

3. ADDRESS OF OPERATOR

P. O. Drawer 570, Farmington, New Mexico 87401

4. LOCATION OF WELL (Report location clearly and in accordance with any State requirements.)

At surface

1520' FNL & 1725' FWL

At proposed prod. zone

14. DISTANCE IN MILES AND DIRECTION FROM NEAREST TOWN OR POST OFFICE*

10 Miles South of Blanco, New Mexico

15. DISTANCE FROM PROPOSED*

LOCATION TO NEAREST
PROPERTY OR LEASE LINE, FT.
(Also to nearest drlg. unit line, if any)

1520'

16. NO. OF ACRES IN LEASE

2585.94

18. DISTANCE FROM PROPOSED LOCATION*

TO NEAREST WELL, DRILLING, COMPLETED,
OR APPLIED FOR, ON THIS LEASE, FT.

700'

19. PROPOSED DEPTH

7000'

17. NO. OF ACRES ASSIGNED
TO THIS WELL

320/100

20. ROTARY OR CABLE TOOLS

Rotary

21. ELEVATIONS (Show whether DF, RT, GR, etc.)

6350' GL

22. APPROX. DATE WORK WILL START*

June 15, 1982

23. PROPOSED CASING AND CEMENTING PROGRAM

| SIZE OF HOLE | SIZE OF CASING | WEIGHT PER FOOT | SETTING DEPTH | QUANTITY OF CEMENT |
|--------------|----------------|-----------------|---------------|-------------------------------------------------------------------------------------------------------------------------------------|
| 12-1/4" | 8-5/8" | 24# | 200' | 165 cu.ft. (Circulate to surface) |
| 7-7/8" | 5-1/2" | 15.50# & 17# | 6700'-7000' | Stage One: 303 cu.ft. (Cover Gallup Stage Two: 296 cu.ft. (Cover Cliff House) Stage Three: 570 cu.ft. (Cover Ojo Alamo) |

Surface formation is Nacimiento.

Top of Ojo Alamo sand is at 1417'.

Top of Pictured Cliffs sand is at 2362'.

Fresh water mud will be used to drill from surface to total depth.

It is anticipated that an IEL will be run from total depth to surface casing and GR-FDC
will be run from total depth to 1900'.

No abnormal pressures or poisonous gases are anticipated in this well.

It is expected that this well will be drilled before July 1, 1982.

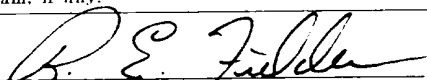
This depends on time required for approvals, rig availability and the weather.

Gas is dedicated.

IN ABOVE SPACE DESCRIBE PROPOSED PROGRAM: If proposal is to deepen or plug back, give data on present productive zone and proposed new productive zone. If proposal is to drill or deepen directionally, give pertinent data on subsurface locations and measured and true vertical depths. Give blowout preventer program, if any.

24.

SIGNED



TITLE District Engineer

DATE April 19, 1982

(This space for Federal or State office use)

PERMIT NO.

APPROVAL DATE

APPROVED BY

TITLE

CONDITIONS OF APPROVAL, IF ANY:

NW 1/4 - 379

with Chas. Dunn

wh 7

NW 1/4

APPROVED
AS AMENDED

MAY 11 1982

JAMES F. SHELTON
DISTRICT ENGINEER

OIL CONSERVATION DIVISION

STATE OF NEW MEXICO
ENERGY AND MINERALS DEPARTMENT

P. O. BOX 2088

SANTA FE, NEW MEXICO 87501

Form C-102
Revised 10-1-78

All distances must be from the outer boundaries of the Section.

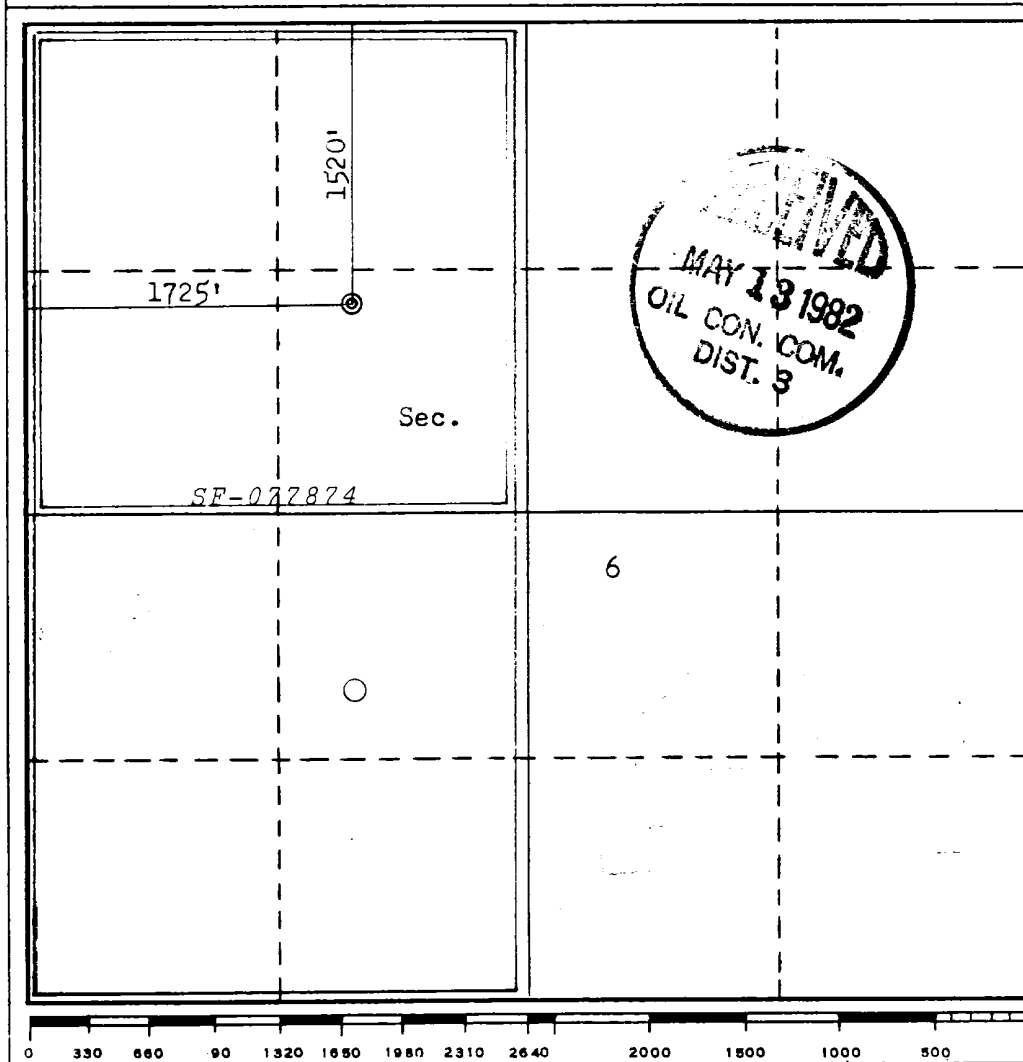
| | | | | | |
|--------------------------------------------------------------------------------------------------------------------------------|---------------------------------------------|------------------------|---------------------------------------|---------------------------|--------------------------------------------------|
| Operator SOUTHLAND ROYALTY COMPANY | | | Lease HANKS | | Well No. 16E |
| Unit Letter F | Section 6 | Township 27N | Range 9W | County San Juan | |
| Actual Footage Location of Well: 1520 feet from the North line and 1725 feet from the West line | | | | | |
| Ground Level Elev. 6350 | Producing Formation Dakota/Chacra | | Pool Basin/Harris Mesa Ext. | | Dedicated Acreage: 514.33/147.23 Acres |

1. Outline the acreage dedicated to the subject well by colored pencil or hatchure marks on the plat below.
2. If more than one lease is dedicated to the well, outline each and identify the ownership thereof (both as to working interest and royalty).
3. If more than one lease of different ownership is dedicated to the well, have the interests of all owners been consolidated by communitization, unitization, force-pooling, etc?

☐ Yes ☐ No If answer is "yes," type of consolidation _____

If answer is "no," list the owners and tract descriptions which have actually been consolidated. (Use reverse side of this form if necessary.) _____

No allowable will be assigned to the well until all interests have been consolidated (by communitization, unitization, forced-pooling, or otherwise) or until a non-standard unit, eliminating such interests, has been approved by the Commission.



CERTIFICATION

I hereby certify that the information contained herein is true and complete to the best of my knowledge and belief.

R. E. Fielder

Name

R. E. Fielder

Position

District Engineer

Company

Southland Royalty Company

Date

April 19, 1982

I hereby certify that the well location shown on this plat was plotted from field notes of actual surveys made by me or under my supervision, and that the same is true and correct to the best of my knowledge and belief.

Date Surveyed

January 1982

Registered Professional Engineer
and/or Land Surveyor

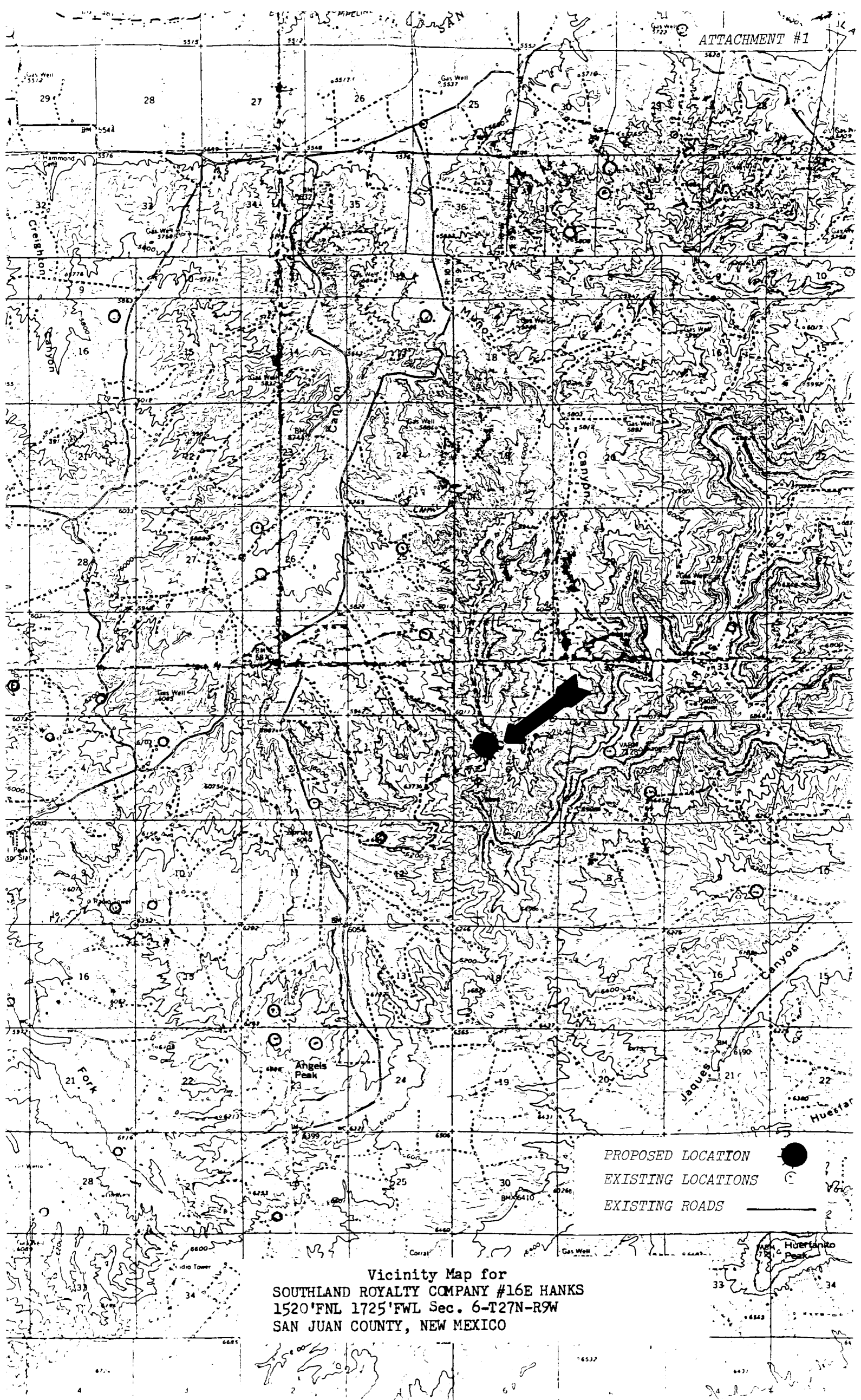
Fred B. Kerr Jr.

Fred B. Kerr Jr.

Certificate No.

3950

F. B. KERR, JR.



PROPOSED LOCATION
 EXISTING LOCATIONS
 EXISTING ROADS

Vicinity Map for
 SOUTHLAND ROYALTY COMPANY #16E HANKS
 1520'FNL 1725'FWL Sec. 6-T27N-R9W
 SAN JUAN COUNTY, NEW MEXICO