

UNITED STATES  
DEPARTMENT OF THE INTERIOR  
GEOLOGICAL SURVEY

30-045-25383

## APPLICATION FOR PERMIT TO DRILL, DEEPEN, OR, PLUG BACK

## 1a. TYPE OF WORK

DRILL ☒DEEPEN ☐PLUG BACK ☐

## b. TYPE OF WELL

OIL  
WELL ☐GAS  
WELL ☒

OTHER

SINGLE  
ZONE ☒MULTIPLE  
ZONE ☐

## 2. NAME OF OPERATOR

El Paso Natural Gas Company

## 3. ADDRESS OF OPERATOR

P.O. Box 289, Farmington, NM 87401

## 4. LOCATION OF WELL (Report location clearly and in accordance with any State requirements\*)

At surface

875'N, 1640'W

At proposed prod. zone

## 14. DISTANCE IN MILES AND DIRECTION FROM NEAREST TOWN OR POST OFFICE\*

12 miles South of Blanco, New Mexico

## 15. DISTANCE FROM PROPOSED\*

LOCATION TO NEAREST  
PROPERTY OR LEASE LINE, FT.  
(Also to nearest drig. unit line, if any)

875'

## 18. DISTANCE FROM PROPOSED LOCATION\*

TO NEAREST WELL, DRILLING, COMPLETED,  
OR APPLIED FOR, ON THIS LEASE, FT.

1320'

## 16. NO. OF ACRES IN LEASE

U. S. GEOLOGICAL SURVEY  
FARMINGTON, N. M.  
Unit

## 17. NO. OF ACRES ASSIGNED

TO THIS WELL

W 320.00

## 19. PROPOSED DEPTH

4775'

## 20. ROTARY OR CABLE TOOLS

Rotar

## 21. ELEVATIONS (Show whether DF, RT, GR, etc.)

6054' gl

## 22. APPROX. DATE WORK WILL START\*

## 23.

## PROPOSED CASING AND CEMENTING PROGRAM

SIZE OF HOLE	SIZE OF CASING	WEIGHT PER FOOT	SETTING DEPTH	QUANTITY OF CEMENT
12 1/4"	8 5/8"	24.0#	120'	106 cf. to circulated.
7 7/8"	4 1/2"	10.5#	4775'	896 cf. to cover Ojo Alamo

Selectively perforate and sand water fracture the Mesa Verde formation.

A 3000 psi WP and 6000 psi test double gate preventer equipped with blind and pipe rams will be used for blow out prevention on this well.

This gas is dedicated.

The W/2 of Section 24 is dedicated to this well.

IN ABOVE SPACE DESCRIBE PROPOSED PROGRAM: If proposal is to deepen or plug back, give data on present productive zone and proposed new productive zone. If proposal is to drill or deepen directionally, give pertinent data on subsurface locations and measured and true vertical depths. Give blowout preventer program, if any.

24.

SIGNED

*A. P. Guico*

TITLE

Drilling Clerk

DATE

January 29, 1982

(This space for Federal or State office use)

PERMIT NO. \_\_\_\_\_

APPROVAL DATE \_\_\_\_\_

APPROVED BY \_\_\_\_\_

TITLE \_\_\_\_\_

CONDITIONS OF APPROVAL, IF ANY:

*note*  
*4/13/82*

\*See Instructions On Reverse Side

APPROVED  
AS AMENDED

DATE

MAY 17 1982

*Elliot*  
For JAMES F. Smith  
DISTRICT ENGINEER

**NEW MEXICO OIL CONSERVATION COMMISSION  
WELL LOCATION AND ACREAGE DEDICATION PLAT**

Form C-102  
Supersedes C-128  
Effective 1-1-65

All distances must be from the outer boundaries of the Section.

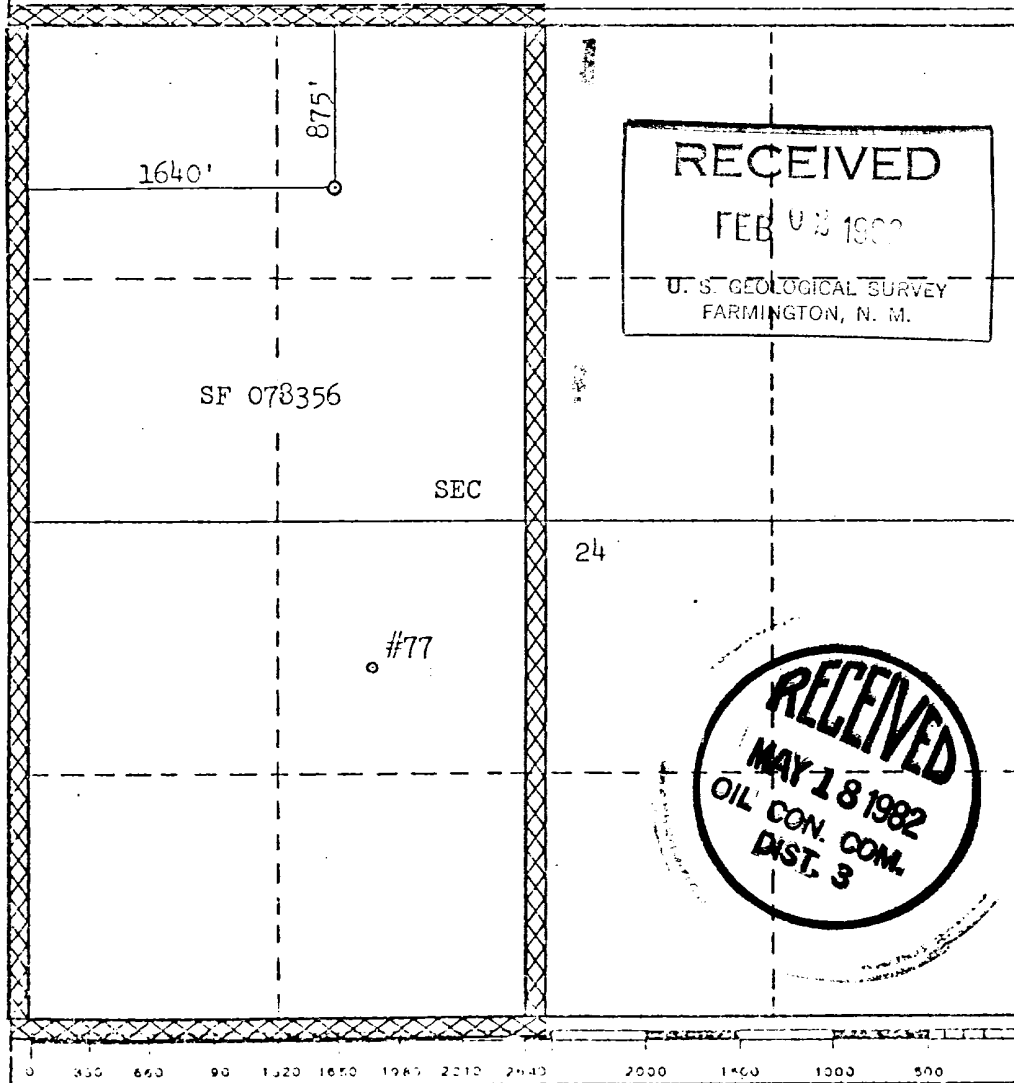
Operator <b>EL PASO NATURAL GAS COMPANY</b>			Lease <b>HUERFANITO UNIT (SF 078356)</b>		Well No. <b>77A</b>
Unit Letter <b>C</b>	Section <b>24</b>	Township <b>27-N</b>	Range <b>9-W</b>	County <b>SAN JUAN</b>	
Actual Footage Location of Well: <b>875</b> feet from the <b>NORTH</b> line and <b>1640</b> feet from the <b>WEST</b> line					
Ground Level Elev. <b>6054</b>	Producing Formation <b>MESAVERDE</b>		Pool <b>BLANCO MESAVERDE</b>		Dedicated Acreage: <b>320.00</b> Acres

1. Outline the acreage dedicated to the subject well by colored pencil or hatchure marks on the plat below.
2. If more than one lease is dedicated to the well, outline each and identify the ownership thereof (both as to working interest and royalty).
3. If more than one lease of different ownership is dedicated to the well, have the interests of all owners been consolidated by communitization, unitization, force-pooling, etc?

☒ Yes    ☐ No    If answer is "yes," type of consolidation Unitization

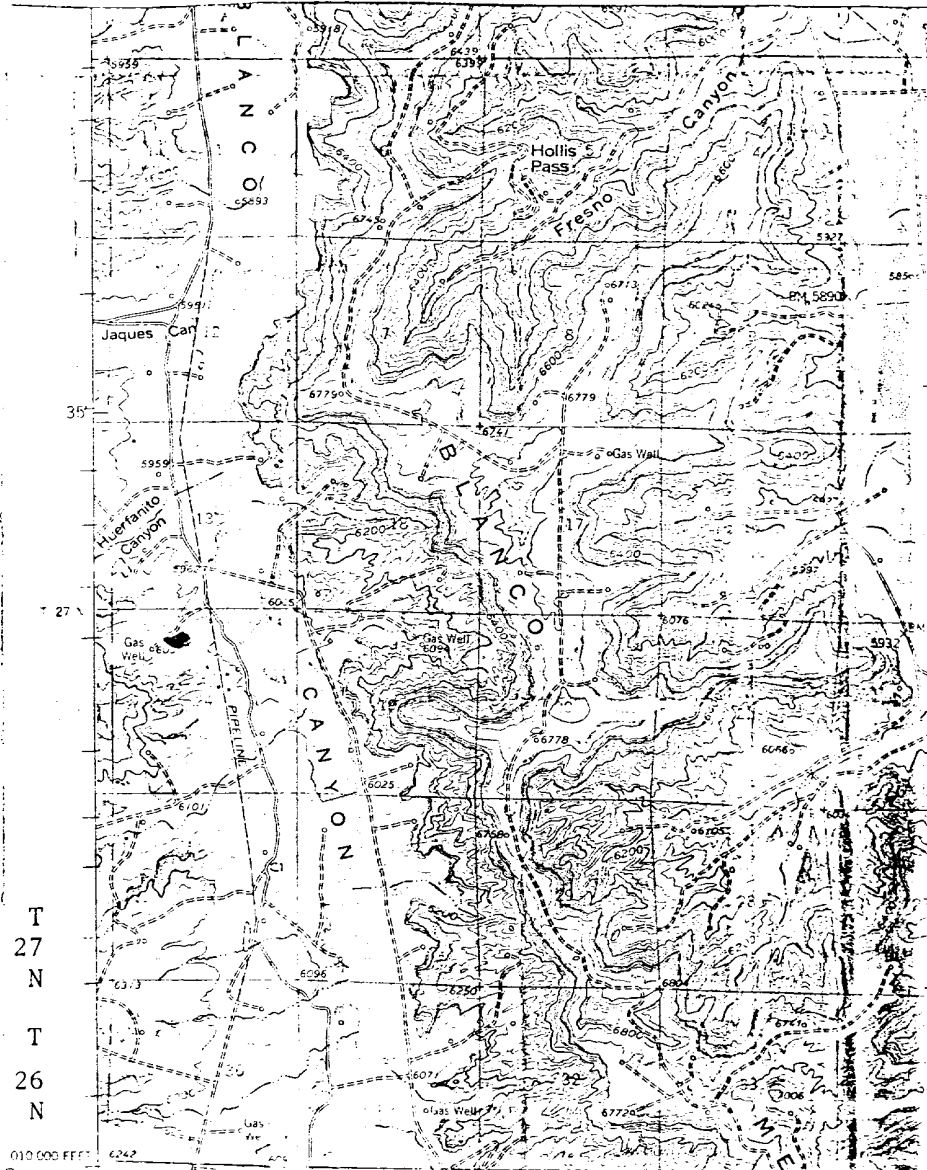
If answer is "no," list the owners and tract descriptions which have actually been consolidated. (Use reverse side of this form if necessary.) \_\_\_\_\_

No allowable will be assigned to the well until all interests have been consolidated (by communitization, unitization, forced-pooling, or otherwise) or until a non-standard unit, eliminating such interests, has been approved by the Commission.



<b>CERTIFICATION</b>	
I hereby certify that the information contained herein is true and complete to the best of my knowledge and belief.	
<i>D. J. Sisco</i>	
Name	<b>Drilling Clerk</b>
Position	<b>El Paso Natural Gas Co.</b>
Company	<b>January 29, 1982</b>
Date	
I hereby certify that the well location shown on this plat was plotted from field notes of actual surveys made by me or under my supervision, and that the same is true and correct to the best of my knowledge and belief.	
Date Surveyed	<b>November 11, 1981</b>
Registered Professional Engineer and/or Land Surveyor	<i>David O. Vilven</i>
Certificate No.	<b>1760</b>

El Paso Natural Gas Company  
Huerfanito Unit #77A  
NW Sec. 24, T-27-N, R-9-W



R-9-W

LEGEND OF RIGHT-OF-WAYS

- EXISTING ROADS —————
- EXISTING PIPELINES + + +
- EXISTING ROAD & PIPELINE + + +
- PROPOSED ROADS —————
- PROPOSED PIPELINES + + +
- PROPOSED ROAD & PIPELINE + + +