

30-045-25552

UNITED STATES  
DEPARTMENT OF THE INTERIOR  
GEOLOGICAL SURVEY

APPLICATION FOR PERMIT TO DRILL, DEEPEN, OR PLUG BACK

1a. TYPE OF WORK DRILL ☒ DEEPEN ☐ PLUG BACK ☐

b. TYPE OF WELL  
OIL WELL ☐ GAS WELL ☒ OTHER ☐ SINGLE ZONE ☒ MULTIPLE ZONE ☐

2. NAME OF OPERATOR  
Tenneco Oil Company

3. ADDRESS OF OPERATOR  
Box 3249, Englewood, CO 80155

4. LOCATION OF WELL (Report location clearly and in accordance with any State requirements)  
At surface 790' FSL, 2045' FEL  
At proposed prod. zone Same  
U.S. GEOLOGICAL SURVEY  
FARMINGTON, N. M.

14. DISTANCE IN MILES AND DIRECTION FROM NEAREST TOWN OR POST OFFICE  
8 miles SE of Blanco, New Mexico

15. DISTANCE FROM PROPOSED LOCATION TO NEAREST PROPERTY OR LEASE LINE, FT.  
(Also to nearest drig. unit line, if any) 790'

18. DISTANCE FROM PROPOSED LOCATION TO NEAREST WELL, DRILLING, COMPLETED, OR APPLIED FOR, ON THIS LEASE, FT.

21. ELEVATIONS (Show whether DF, RT, GR, etc.)  
5749' GR

23. PROPOSED CASING AND CEMENTING PROGRAM

SIZE OF HOLE	SIZE OF CASING	WEIGHT PER FOOT	SETTING DEPTH	QUANTITY OF CEMENT
12-1/4"	9-5/8"	36#	± 250'	Circ to surface
8-3/4"	7"	23#	± 2700'	2-stage - Circ to surface
6-1/4"	4-1/2"	11.6#, 10.5#	± 6606'	Circ to liner top

RECEIVED

JAN 14 1983

DRILLING OPERATIONS AUTHORIZED ARE  
SUBJECT TO COMPLIANCE WITH ATTACHED  
"GENERAL REQUIREMENTS"

Gas is dedicated

See attached drilling procedure

OIL CON. DIV.  
DIST. 3

This action is subject to administrative  
appeal pursuant to 30 CFR 290.

Approval for Unorthodox Location received from New Mexico Oil Conservation Comm., 11/24/82

IN ABOVE SPACE DESCRIBE PROPOSED PROGRAM: If proposal is to deepen or plug back, give data on present productive zone and proposed new productive zone. If proposal is to drill or deepen directionally, give pertinent data on subsurface locations and measured and true vertical depths. Give blowout preventer program, if any.

24. SIGNED Ken Russell TITLE Sr. Production Analyst DATE December 15, 1982  
(This space for Federal or State office use)

PERMIT NO.

APPROVAL DATE

APPROVED BY  
CONDITIONS OF APPROVAL, IF ANY:

TITLE

APPROVED  
AS AMENDED

NSL 1620

oh S

NMOCC

JAN 12 1983  
JAMES F. SIMS  
DISTRICT ENGINEER

## OIL CONSERVATION DIVISION

P. O. BOX 2088

SANTA FE, NEW MEXICO 87501

Form C-107  
Revised 10-1-78STATE OF NEW MEXICO  
ENERGY AND MINERALS DEPARTMENT

All distances must be from the outer boundaries of the Section.

Operator <b>TENNECO OIL COMPANY</b>			Lease <b>BOLACK</b>		Well No. <b>3E</b>
Unit Letter <b>0</b>	Section <b>20</b>	Township <b>28N</b>	Range <b>8W</b>	County <b>San Juan</b>	
Actual Footage Location of Well: <b>790</b> feet from the <b>South</b> line and <b>2045</b> feet from the <b>East</b> line					
Ground Level Elev. <b>5749</b>	Producing Formation <b>Dakota</b>		Pool <b>Basin Dakota</b>		Dedicated Acreage: <b>5 320</b> Acres

1. Outline the acreage dedicated to the subject well by colored pencil or hachure marks on the plat below.
2. If more than one lease is dedicated to the well, outline each and identify the ownership thereof (both as to working interest and royalty).
3. If more than one lease of different ownership is dedicated to the well, have the interests of all owners been consolidated by communitization, unitization, force-pooling, etc?

☒ Yes ☐ No If answer is "yes," type of consolidation Communitization

If answer is "no," list the owners and tract descriptions which have actually been consolidated. (Use reverse side of this form if necessary.) \_\_\_\_\_

No allowable will be assigned to the well until all interests have been consolidated (by communitization, unitization, forced-pooling, or otherwise) or until a non-standard unit, eliminating such interests, has been approved by the Commission.

<b>RECEIVED</b> JAN 14 1983 OIL CON. DIV. DIST. 3 Sec.		<b>RECEIVED</b> DEC 20 1982 U. S. GEOLOGICAL SURVEY FARMINGTON, N. M.	
NM - 03549 TOC 50% Conoco 50%		SF-080101 20 Crown Central 100%	
		2045' 790'	

Scale: 1"=1000'

## CERTIFICATION

I hereby certify that the information contained herein is true and complete to the best of my knowledge and belief.

Name

Ken Russell

Position

Sr. Production Analyst

Company

Tenneco Oil Company

Date

November 1, 1982

I hereby certify that the well location shown on this plat was plotted from field notes of actual surveys made by me or under my supervision, and that the same is true and correct to the best of my knowledge and belief.

Date Surveyed

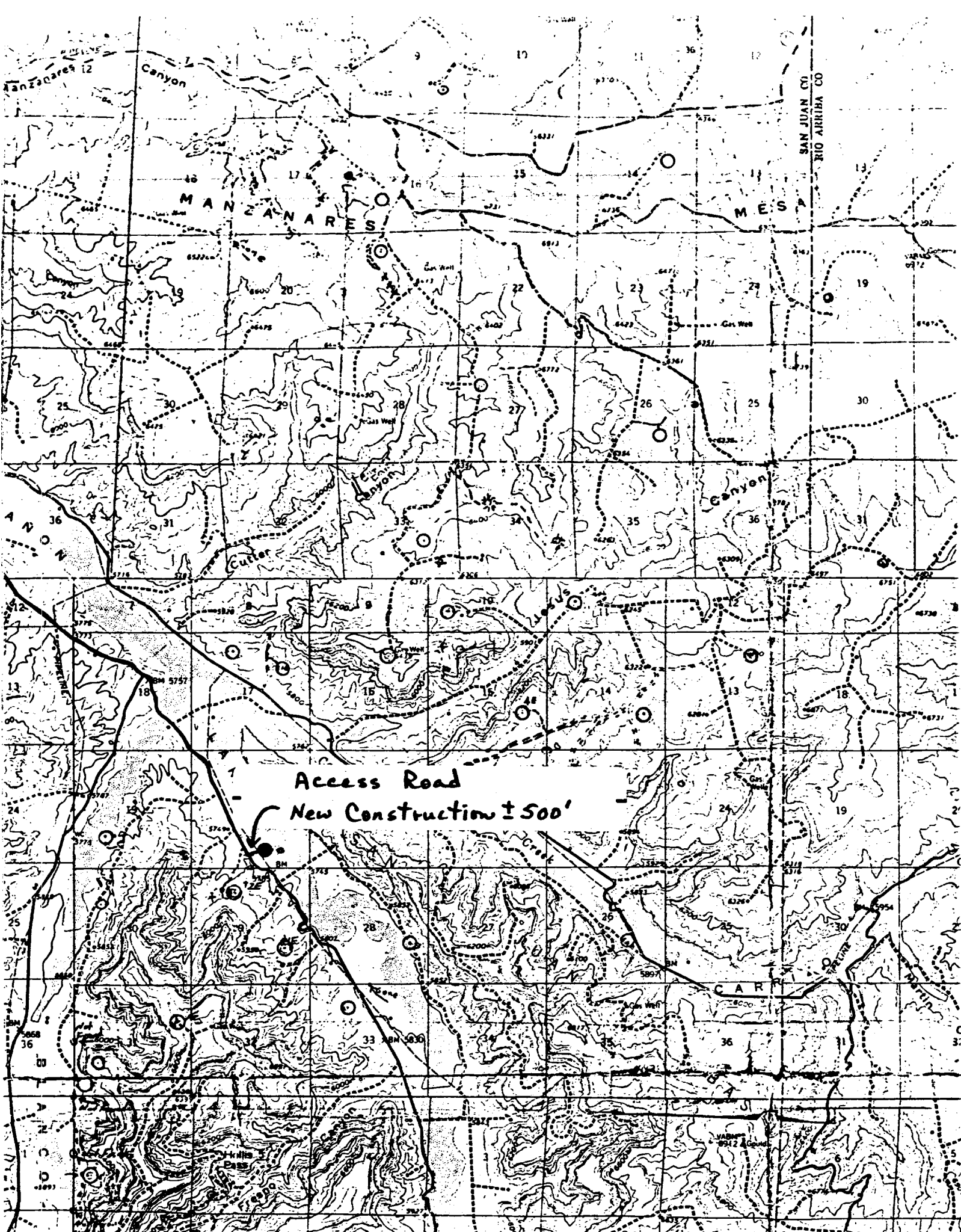
September 8, 1982

Registered Professional Engineer  
and Land Surveyor

Fred B. Kerr Jr.

Certificate No.

3950





STATE OF NEW MEXICO  
ENERGY AND MINERALS DEPARTMENT  
OIL CONSERVATION DIVISION

November 24, 1982

BRUCE KING  
GOVERNOR  
LARRY KEHOE  
SECRETARY

POST OFFICE BOX 2088  
STATE LAND OFFICE BUILDING  
SANTA FE, NEW MEXICO 87501  
(505) 827-2434

Tenneco Oil Exploration  
and Production  
P. O. Box 3249  
Englewood, Colorado 80155

Attention: Ken Russell

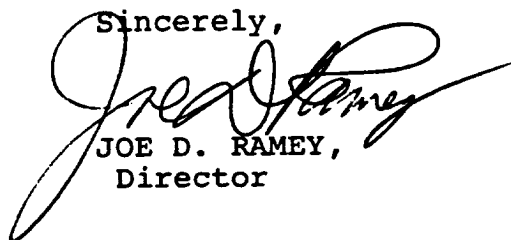
Administrative Order NSL-1620

Gentlemen:

Reference is made to your application for a non-standard location for your Bolack Well No. 3E located 790 feet from the South line and 2045 feet from the East line of Section 20, Township 28 North, Range 8 West, NMPM, Basin Dakota Pool, San Juan County, New Mexico.

By authority granted me under the provisions of Rule 3 of Order No. R-1670, the above-described unorthodox location is hereby approved.

Sincerely,



JOE D. RAMEY,  
Director

JDR/RLS/dr

cc: Oil Conservation Division - Aztec  
Oil & Gas Engineering Committee - Hobbs  
Minerals Management Service - Farmington

RECEIVED  
JAN 14 1983  
OIL CON. DIV.  
DIST. 3