

UNITED STATES
DEPARTMENT OF THE INTERIOR
GEOLOGICAL SURVEY

30-045-25566

APPLICATION FOR PERMIT TO DRILL, DEEPEN, OR PLUG BACK

1a. TYPE OF WORK
DRILL ☒ DEEPEN ☐ PLUG BACK ☐

b. TYPE OF WELL
OIL WELL ☐ GAS WELL ☒ OTHER ☐ SINGLE ZONE ☒ MULTIPLE ZONE ☐

2. NAME OF OPERATOR
Tenneco Oil Company

3. ADDRESS OF OPERATOR
Box 3249, Englewood, CO 80155

4. LOCATION OF WELL (Report location clearly and in accordance with any State requirements*)
At surface 1905' FSL, 580' FEL
At proposed prod. zone Same

14. DISTANCE IN MILES AND DIRECTION FROM NEAREST TOWN OR POST OFFICE*
9 miles SE of Blanco, New Mexico

15. DISTANCE FROM PROPOSED* LOCATION TO NEAREST PROPERTY OR LEASE LINE, FT. (Also to nearest drilg. unit line, if any)
580'

16. NO. OF ACRES IN LEASE
960.00

17. NO. OF ACRES ASSIGNED TO THIS WELL
320

18. DISTANCE FROM PROPOSED LOCATION* TO NEAREST WELL, DRILLING, COMPLETED, OR APPLIED FOR, ON THIS LEASE, FT.
6761'

19. PROPOSED DEPTH
6761'

20. ROTARY OR CABLE TOOLS
Rotary

21. ELEVATIONS (Show whether DF, RT, GR, etc.)
5829' GR

22. APPROX. DATE WORK WILL START*
ASAP

23. PROPOSED CASING AND CEMENTING PROGRAM				
SIZE OF HOLE	SIZE OF CASING	WEIGHT PER FOOT	SETTING DEPTH	QUANTITY OF CEMENT
12-1/4"	9-5/8"	36#	± 250'	Circ to surface
8-3/4"	7"	23#	± 2850'	2-stage - circ to surface
6-1/4"	4-1/2"	11.6#, 10.5#	± 6761'	Circ to liner top

See attached drilling procedure

Gas is dedicated

Approval for Unorthodox Location received from New Mexico Oil Conservation Division on November 19, 1982.

IN ABOVE SPACE DESCRIBE PROPOSED PROGRAM: If proposal is to deepen or plug back, give data on present productive zone and proposed new productive zone. If proposal is to drill or deepen directionally, give pertinent data on subsurface locations and measure true vertical depths. Give blowout preventer program, if any.

24. SIGNED Ken Russell TITLE Sr. Production Analyst DATE December 13, 1982
(This space for Federal or State office use)

PERMIT NO. _____ APPROVAL DATE _____

APPROVED BY _____ TITLE _____
CONDITIONS OF APPROVAL, IF ANY:

DRILLING OPERATIONS AUTHORIZED ARE
SUBJECT TO COMPLIANCE WITH ATTACHED
"GENERAL REQUIREMENTS"

This action is subject to administrative
appeal pursuant to 30 CFR 290.

NSL 1607

NMOCC

APPROVED
AS AMENDED

FEB 3 1983
JAMES F. SIMS
DISTRICT ENGINEER

OIL CONSERVATION DIVISION

P. O. BOX 2088

SANTA FE, NEW MEXICO 87501

Form C-107
Revised 10-1-71

STATE OF NEW MEXICO

ENERGY AND MINERALS DEPARTMENT

All distances must be from the outer boundaries of the Section.

Operator TENNECO OIL COMPANY			Lease DRYDEN		Well No. 1E
Unit Letter I	Section 28	Township 28N	Range 8W	County San Juan	
Actual Footage Location of Well: 1905 feet from the South line and 580 feet from the East line					
Ground Level Elev: 5829	Producing Formation Dakota		Pool Basin Dakota		Dedicated Acreage: 5320 Acres

1. Outline the acreage dedicated to the subject well by colored pencil or hachure marks on the plat below.
2. If more than one lease is dedicated to the well, outline each and identify the ownership thereof (both as to working interest and royalty).
3. If more than one lease of different ownership is dedicated to the well, have the interests of all owners been consolidated by communitization, unitization, force-pooling, etc?

☐ Yes ☐ No If answer is "yes," type of consolidation _____

If answer is "no," list the owners and tract descriptions which have actually been consolidated. (Use reverse side of this form if necessary.) _____

No allowable will be assigned to the well until all interests have been consolidated (by communitization, unitization, forced-pooling, or otherwise) or until a non-standard unit, eliminating such interests, has been approved by the Commission.

Sec.		RECEIVED DEC 15 1982 U. S. GEOLOGICAL SURVEY FARMINGTON N. M.	
NM-012200 TOC - 50% Conoco - 50%		RECEIVED FEB 4 - 1983 OIL CON. DIV. DIST. 3	
1905'		580'	

CERTIFICATION

I hereby certify that the information contained herein is true and complete to the best of my knowledge and belief.

Name

Ken Russell

Position

Sr. Production Analyst

Company

Tenneco Oil Company

Date

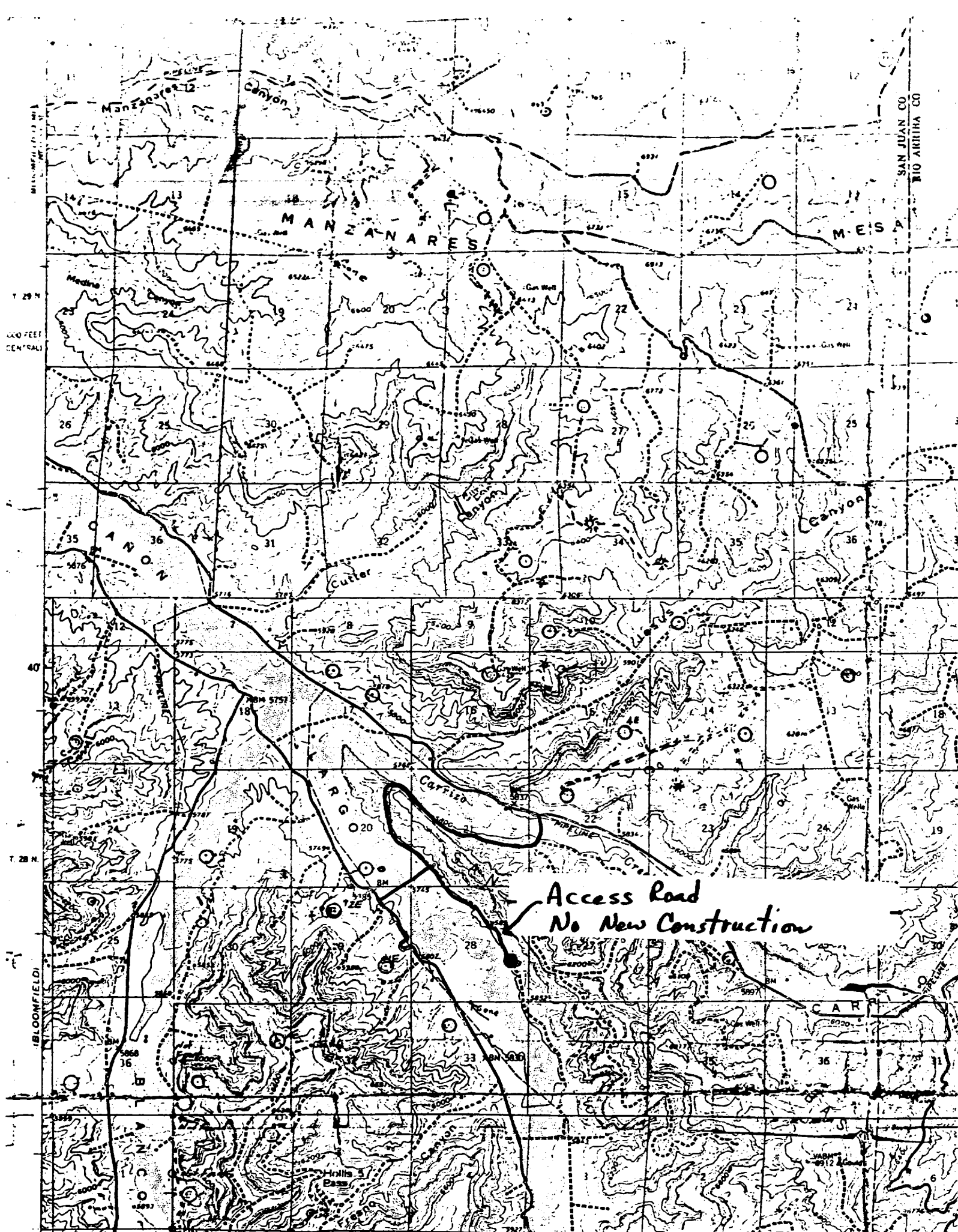
October 25, 1982

I hereby certify that the well location shown on this plat was plotted from field notes of actual surveys made by me or under my supervision, and that the same is true and correct to the best of my knowledge and belief.

Date Surveyed

September 13, 1982

Registered Professional Engineer
and Land SurveyorFred B. Kerr Jr.
Certificate No.



Access Road
No New Construction