

UNITED STATES
DEPARTMENT OF THE INTERIOR
GEOLOGICAL SURVEY

30-045-25588

APPLICATION FOR PERMIT TO DRILL, DEEPEN, OR PLUG BACK

1a. TYPE OF WORK

DRILL ☒DEEPEN ☐PLUG BACK ☐

b. TYPE OF WELL

OIL
WELL ☐GAS
WELL ☒

OTHER

SINGLE
ZONE ☒MULTIPLE
ZONE ☐

2. NAME OF OPERATOR

Tenneco Oil Company

3. ADDRESS OF OPERATOR

Box 3249, Englewood, CO 80155

4. LOCATION OF WELL (Report location clearly and in accordance with any State requirements.)

At surface

2155' FNL, 1950' FEL

At proposed prod. zone

Same

14. DISTANCE IN MILES AND DIRECTION FROM NEAREST TOWN OR POST OFFICE*

12 mi. SE of Blanco, New Mexico

15. DISTANCE FROM PROPOSED*

LOCATION TO NEAREST

PROPERTY OR LEASE LINE, FT.

(Also to nearest drlg. unit line, if any)

1950'

18. DISTANCE FROM PROPOSED LOCATION*

TO NEAREST WELL, DRILLING, COMPLETED,

OR APPLIED FOR, ON THIS LEASE, FT.

16. NO. OF ACRES IN LEASE

2400.96

19. PROPOSED DEPTH

7477'

17. NO. OF ACRES ASSIGNED

TO THIS WELL

320

20. ROTARY OR CABLE TOOLS

Rotary

21. ELEVATIONS (Show whether DF, RT, GR, etc.)

6763' GR

22. APPROX. DATE WORK WILL START*

ASAP

23.

PROPOSED CASING AND CEMENTING PROGRAM

SIZE OF HOLE	SIZE OF CASING	WEIGHT PER FOOT	SETTING DEPTH	QUANTITY OF CEMENT
12-1/4"	9-5/8"	36#	± 300'	Circ to surface
8-3/4"	7"	23#	± 3400'	2-stage - circ to surface
6-1/4"	4-1/2"	11.6#, 10.5#	± 7477'	Circ to liner top

DRILLING OPERATIONS AUTHORIZED ARE
SUBJECT TO COMPLIANCE WITH ATTACHED
"GENERAL REQUIREMENTS"

See attached drilling procedure

Gas is dedicated

Approval for non-standard location received from New Mexico Oil Conservation Division,
January 10, 1983.

IN ABOVE SPACE DESCRIBE PROPOSED PROGRAM: If proposal is to deepen or plug back, give data on present productive zone and proposed new productive zone. If proposal is to drill or deepen directionally, give pertinent data on subsurface locations and measured and true vertical depths. Give blowout preventer program, if any.

24.

SIGNED

Ken Russell
Ken Russell

TITLE

Sr. Production Analyst

DATE

January 17, 1983

(This space for Federal or State office use)

PERMIT NO.

APPROVAL DATE

APPROVED BY

TITLE

CONDITIONS OF APPROVAL, IF ANY:

NSL 1641
ok 2APPROVED
AS AMENDED

DATE

FEB 2 1983

James F. Sims
JAMES F. SIMS
DISTRICT ENGINEER

NMCCO

All distances must be from the outer boundaries of the Section.

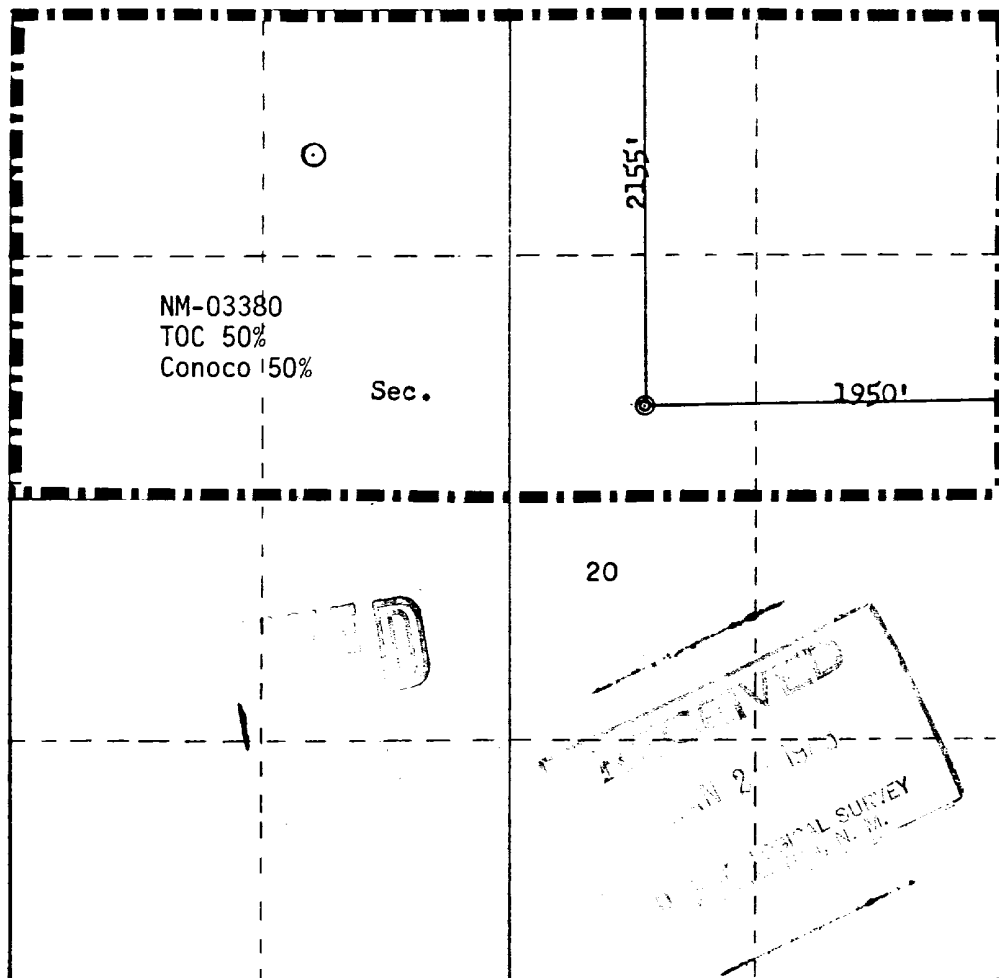
Operator TENNECO OIL COMPANY			Lease FLORANCE		Well No. 62E
Unit Letter G	Section 20	Township 27N	Range 8W	County San Juan	
Actual Footage Location of Well: 2155 feet from the North line and 1950 feet from the East line					
Ground Level Elevation 6763	Producing Formation Dakota		Pool Basin Dakota	Dedicated Acreage: N 320 Acres	

1. Outline the acreage dedicated to the subject well by colored pencil or hatchure marks on the plat below.
2. If more than one lease is dedicated to the well, outline each and identify the ownership thereof (both as to working interest and royalty).
3. If more than one lease of different ownership is dedicated to the well, have the interests of all owners been consolidated by communitization, unitization, force-pooling, etc?

☐ Yes ☐ No If answer is "yes," type of consolidation _____

If answer is "no," list the owners and tract descriptions which have actually been consolidated. (Use reverse side of this form if necessary.) _____

No allowable will be assigned to the well until all interests have been consolidated (by communitization, unitization, forced-pooling, or otherwise) or until a non-standard unit, eliminating such interests, has been approved by the Commission.



Scale: 1"=1000'

CERTIFICATION

I hereby certify that the information contained herein is true and complete to the best of my knowledge and belief.

Ken Russell

Name

Ken Russell

Position

Sr. Production Analyst

Company

Tenneco Oil Company

Date

November 15, 1982

I hereby certify that the well location shown on this plat was plotted from field notes of actual surveys made by me or under my supervision, and that the same is true and correct to the best of my knowledge and belief.

Date Surveyed

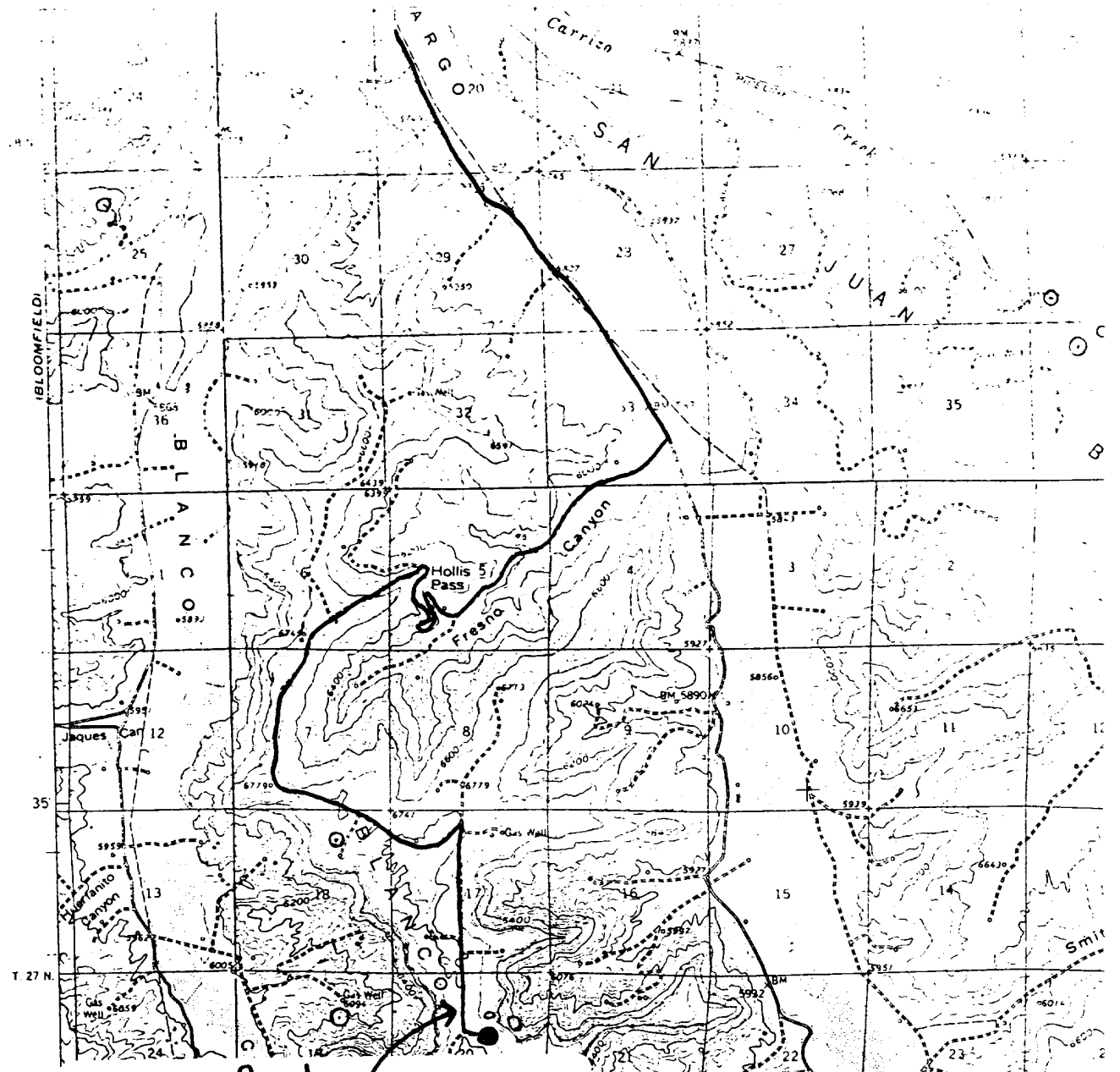
October 4, 1982

Registered Professional Engineer and Land Surveyor

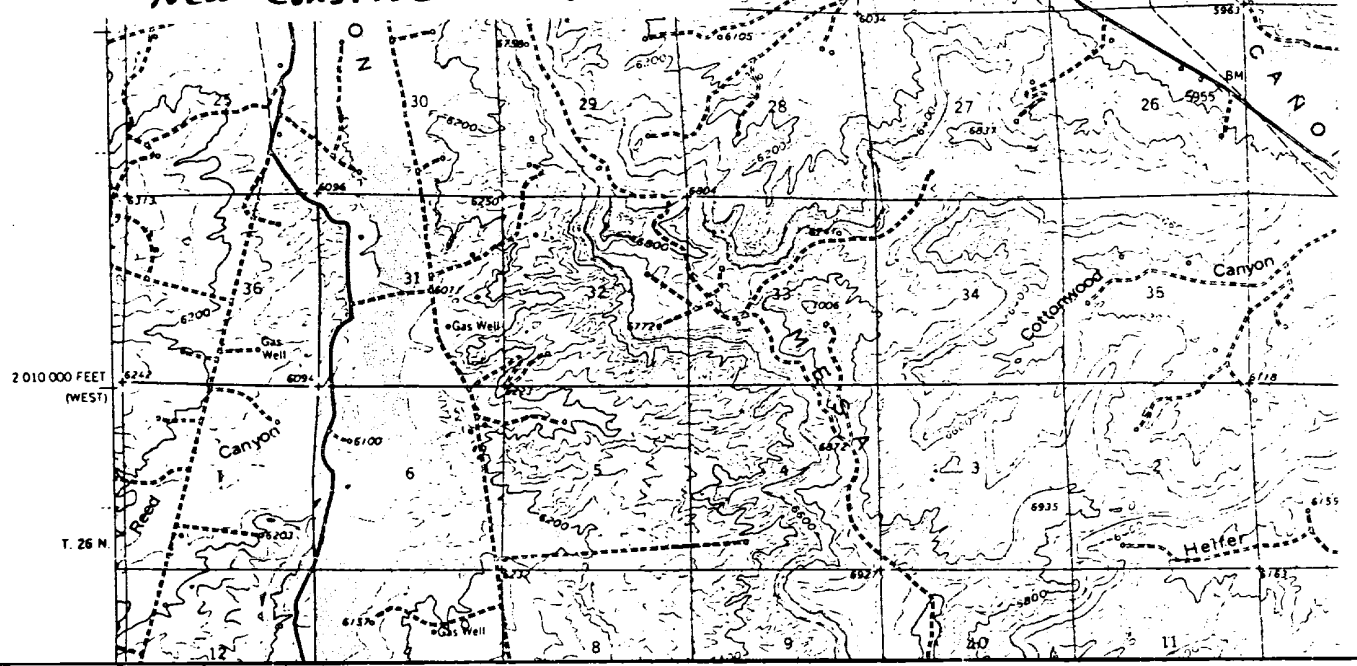
Fred B. Kerr Jr.
Fred B. Kerr Jr.

Certificate No.

3950



- Access Road
- New Construction $\pm 200'$





BRUCE KING
GOVERNOR

STATE OF NEW MEXICO
ENERGY AND MINERALS DEPARTMENT
OIL CONSERVATION DIVISION

January 10, 1983

POST OFFICE BOX 2088
STATE LAND OFFICE BUILDING
SANTA FE, NEW MEXICO 87501
(505) 827-2434

Tenneco Oil Exploration
and Production
P. O. Box 3249
Englewood, Colorado 80155

Attention: Ken Russell

Administrative Order NSL-1641

Gentlemen:

Reference is made to your application for a non-standard location for your Florance Well No. 62E to be located 2155 feet from the North line and 1950 feet from the East line of Section 20, Township 27 North, Range 8 West, NMPM, Basin Dakota Pool, San Juan County, New Mexico.

By authority granted me under the provisions of Rule 5(c)(3) of Order No. R-1670, the above-described unorthodox location is hereby approved.

Sincerely,

A handwritten signature in dark ink, appearing to read "Joe D. Ramey", written over a horizontal line.

JOE D. RAMEY,
Director

JDR/RLS/dr

cc: Oil Conservation Division - Aztec
Oil & Gas Engineering Committee - Hobbs
Minerals Management Service - Farmington