

UNITED STATES
DEPARTMENT OF THE INTERIOR
GEOLOGICAL SURVEY

30-045-25592

APPLICATION FOR PERMIT TO DRILL, DEEPEN, OR PLUG BACK

1a. TYPE OF WORK
DRILL ☒ DEEPEN ☐ PLUG BACK ☐

b. TYPE OF WELL
OIL WELL ☐ GAS WELL ☒ OTHER ☐ SINGLE ZONE ☒ MULTIPLE ZONE ☐

2. NAME OF OPERATOR
Tenneco Oil Company

3. ADDRESS OF OPERATOR
Box 3249, Englewood, CO 80155

4. LOCATION OF WELL (Report location clearly and in accordance with any State requirements.)
At surface 1690' FSL, 30' FFL

At proposed prod. zone
Same

14. DISTANCE IN MILES AND DIRECTION FROM NEAREST TOWN OR POST OFFICE*
4 miles SE of Blanco, New Mexico

16. DISTANCE FROM PROPOSED*
LOCATION TO NEAREST
PROPERTY OR LEASE LINE, FT.
(Also to nearest drilg. unit line, if any) 554'

18. DISTANCE FROM PROPOSED LOCATION*
TO NEAREST WELL, DRILLING, COMPLETED,
OR APPLIED FOR, ON THIS LEASE, FT.

21. ELEVATIONS (Show whether DF, RT, GR, etc.)
6602' GR

23. PROPOSED CASING AND CEMENTING PROGRAM

SIZE OF HOLE	SIZE OF CASING	WEIGHT PER FOOT	SETTING DEPTH	QUANTITY OF CEMENT
12-1/4"	9-5/8"	36#	± 250'	Circ to surface
8-3/4"	7"	23#	± 3500'	2-stage - circ to surface
6-1/4"	4-1/2"	11.6#, 10.5#	± 7510'	Circ to liner top

See attached drilling procedure

Gas is dedicated

Approval for Unorthodox Location received from New Mexico Oil Conservation Division
on October 12, 1982

DRILLING OPERATIONS AUTHORIZED ARE
SUBJECT TO COMPLIANCE WITH ATTACHED
"GENERAL REQUIREMENTS"

This action is subject to administrative
appeal pursuant to 30 CFR 250.104.

IN ABOVE SPACE DESCRIBE PROPOSED PROGRAM: If proposal is to deepen or plug back, give data on present productive zone and proposed new productive zone. If proposal is to drill or deepen directionally, give pertinent data on subsurface locations and measured and true vertical depths. Give blowout preventer program, if any.

24. SIGNED Ken Russell TITLE Sr. Production Analyst DATE December 14, 1982
(This space for Federal or State office use)

PERMIT NO. _____ APPROVAL DATE _____
APPROVED BY _____ TITLE _____
CONDITIONS OF APPROVAL, IF ANY:

NSL 1587
NSP R1814
ghz

NMOCC

APPROVED
AS AMENDED
DATE FEB 19 1983
James F. Sims
DISTRICT ENGINEER

NEW MEXICO OIL CONSERVATION COMMISSION
WELL LOCATION AND ACREAGE DEDICATION PLAT

Form C-102
Supersedes C-128
Effective 1-1-65

All distances must be from the outer boundaries of the Section.

Operator TENNECO OIL COMPANY		Lease JACKSON COM			Well No. 1E
Unit Letter I (Lot #1)	Section 8	Township 28N	Range 9W	County San Juan	
Actual Footage Location of Well: 1690 feet from the South line and 30 feet from the East line					
Ground Level Elev. 6602	Producing Formation Dakota		Pool Basin Dakota		Dedicated Acreage: 340.52 Acres

1. Outline the acreage dedicated to the subject well by colored pencil or hachure marks on the plat below.
2. If more than one lease is dedicated to the well, outline each and identify the ownership thereof (both as to working interest and royalty).
3. If more than one lease of different ownership is dedicated to the well, have the interests of all owners been consolidated by communitization, unitization, force-pooling, etc?

☒ Yes ☐ No If answer is "yes," type of consolidation Communitized

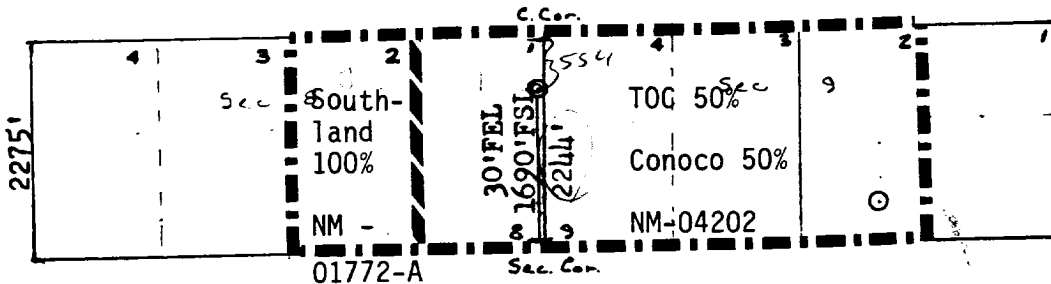
If answer is "no," list the owners and tract descriptions which have actually been consolidated. (Use reverse side of this form if necessary.)

No allowable will be assigned to the well until all interests have been consolidated (by communitization, unitization, forced-pooling, or otherwise) or until a non-standard unit, eliminating such interests, has been approved by the Commission.

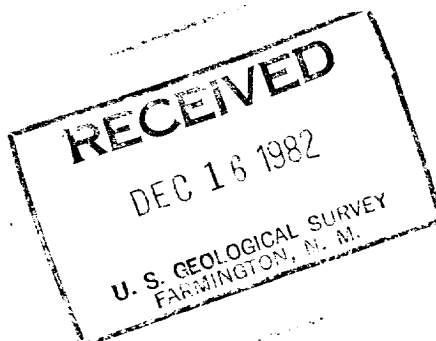
RECEIVED

FEB 24 1983

OIL CON. DIV.
DIST. 3



Scale: 1"=2000'



CERTIFICATION

I hereby certify that the information contained herein is true and complete to the best of my knowledge and belief.

Ken Russell

Name

Ken Russell

Position

Sr. Production Analyst

Company

Tenneco Oil Co.

Date

September 20, 1982

I hereby certify that the well location shown on this plat was plotted from field notes of actual surveys made by me or under my supervision, and that the same is true and correct to the best of my knowledge and belief.

Date Surveyed

August 19, 1982

Registered Professional Engineer and Land Surveyor

Frederick J. Ferris

Certificate

3950

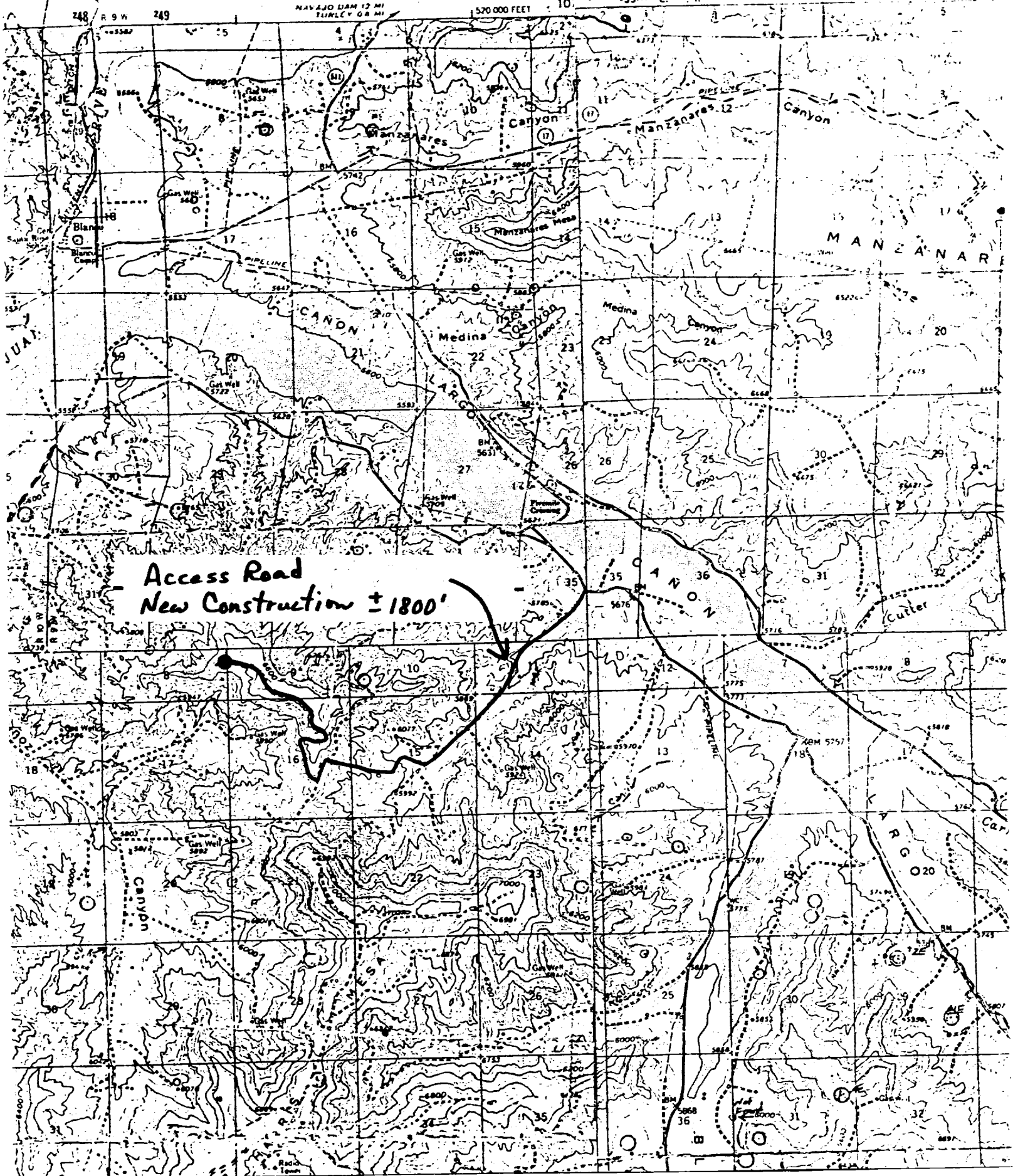
UNITED STATES
DEPARTMENT OF THE INTERIOR
GEOLOGICAL SURVEY

BLOOMFIELD QUADRANGLE
NEW MEXICO-SAN JUAN CO.
15 MINUTE SERIES (TOPOGRAPHIC)

NAVAJO DAM 12 MI
TURKEY 6.8 MI

520,000 FEET

255,000 M. E.





STATE OF NEW MEXICO
ENERGY AND MINERALS DEPARTMENT
OIL CONSERVATION DIVISION

BRUCE KING
GOVERNOR

POST OFFICE BOX 2088
STATE LAND OFFICE BUILDING
SANTA FE, NEW MEXICO 87501
(505) 827-2434

October 12, 1982

Tenneco Oil Company
P. O. Box 3249
Englewood, Colorado 80155

Attention: Ken Russell

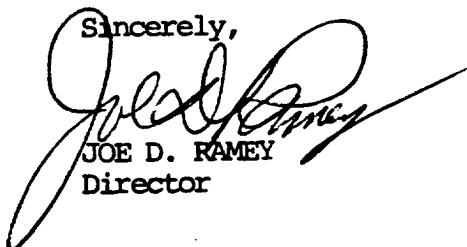
Administrative Order NSL-1587

Gentlemen:

Reference is made to your application for a non-standard location for your Jackson Com Well No. 1-E to be located 1690 feet from the South line and 30 feet from the East line of Section 8, Township 28 North, Range 9 West, NMPM, Basin Dakota formation, San Juan County, New Mexico.

By authority granted me under the provisions of Rule 104 F of the Division Rules and Regulations, the above-described unorthodox location is hereby approved.

Sincerely,



JOE D. RAMEY
Director

JDR/RLS/jc

cc: Oil Conservation Division - Aztec
Oil & Gas Engineering Committee - Hobbs