

UNITED STATES
DEPARTMENT OF THE INTERIOR
GEOLOGICAL SURVEY

30-045-25626

APPLICATION FOR PERMIT TO DRILL, DEEPEN, OR PLUG BACK

1a. TYPE OF WORK

DRILL ☒DEEPEN ☐PLUG BACK ☐

b. TYPE OF WELL

OIL
WELL ☐GAS
WELL ☒

OTHER

SINGLE
ZONE ☒MULTIPLE
ZONE ☐

2. NAME OF OPERATOR

Amoco Production Company

3. ADDRESS OF OPERATOR

501 Airport Drive, Farmington, New Mexico 87401

4. LOCATION OF WELL (Report location clearly and in accordance with any State requirements.)

At surface

1850' FSL x 1850' FWL

At proposed prod. zone

Same

14. DISTANCE IN MILES AND DIRECTION FROM NEAREST TOWN OR POST OFFICE*

Approx. 11 miles south of Blanco, New Mexico

15. DISTANCE FROM PROPOSED*

LOCATION TO NEAREST
PROPERTY OR LEASE LINE, FT.
(Also to nearest drlg. unit line, if any)

1850'

18. DISTANCE FROM PROPOSED LOCATION*
TO NEAREST WELL, DRILLING COMPLETED,
OR APPLIED FOR, ON THIS LEASE, FT.

2250'

21. ELEVATIONS (Show whether DF, RT, GR, etc.)

6225' GL

16. NO. OF ACRES IN LEASE

1753.36

19. PROPOSED DEPTH

6642'

17. NO. OF ACRES ASSIGNED
TO THIS WELL

320

20. ROTARY OR CABLE TOOLS

Rotary

22. APPROX. DATE WORK WILL START*

As soon as permitted.

This action is subject to administrative
appeal pursuant to 30 CFR 230.

SIZE OF HOLE	SIZE OF CASING	WEIGHT PER FOOT	SETTING DEPTH
12-1/2"	8-5/8"	24.0# K-55	300'
7-7/8"	4-1/2"	10.5# K-55	6642'

QUANTITY OF CEMENT

350 cu. ft. Class B x 2% CaCl₂
924 cu. ft. Class B, 50:50 POZ
2# med tuf plug/sx, .8% FLA tail-in
x 118 cu. ft. Class B neat.

Amoco proposes to drill the above well to further develop the Basin Dakota reservoir. The well will be drilled to the surface casing point using native mud. The well will then be drilled to TD with a low solids non-dispersed mud system. Completion design will be based on open hole logs. Copy of all logs will be filed upon completion. Amoco's standard blowout prevention will be employed; see attached drawing for blowout preventer design.

Gas produced from this well is dedicated to El Paso Natural Gas under Contract No. 56742.

IN ABOVE SPACE DESCRIBE PROPOSED PROGRAM: If proposal is to deepen or plug back, give data on present productive zone and proposed new productive zone. If proposal is to drill or deepen directionally, give pertinent data on subsurface locations and measured and true vertical depths. Give blowout prevention program, if any.

24.

SIGNED

J. F. SHOENAKER

TITLE District Engineer

DATE January 25, 1983

(This space for Federal or State office use)

PERMIT NO.

APPROVAL DATE

APPROVED BY

TITLE

CONDITIONS OF APPROVAL, IF ANY:

APPROVED
AS AMENDED

DATE

MAR 2 1983
James F. Sims
JAMES F. SIMS
DISTRICT ENGINEER

NMOCC

All distances must be from the outer boundaries of the Section.

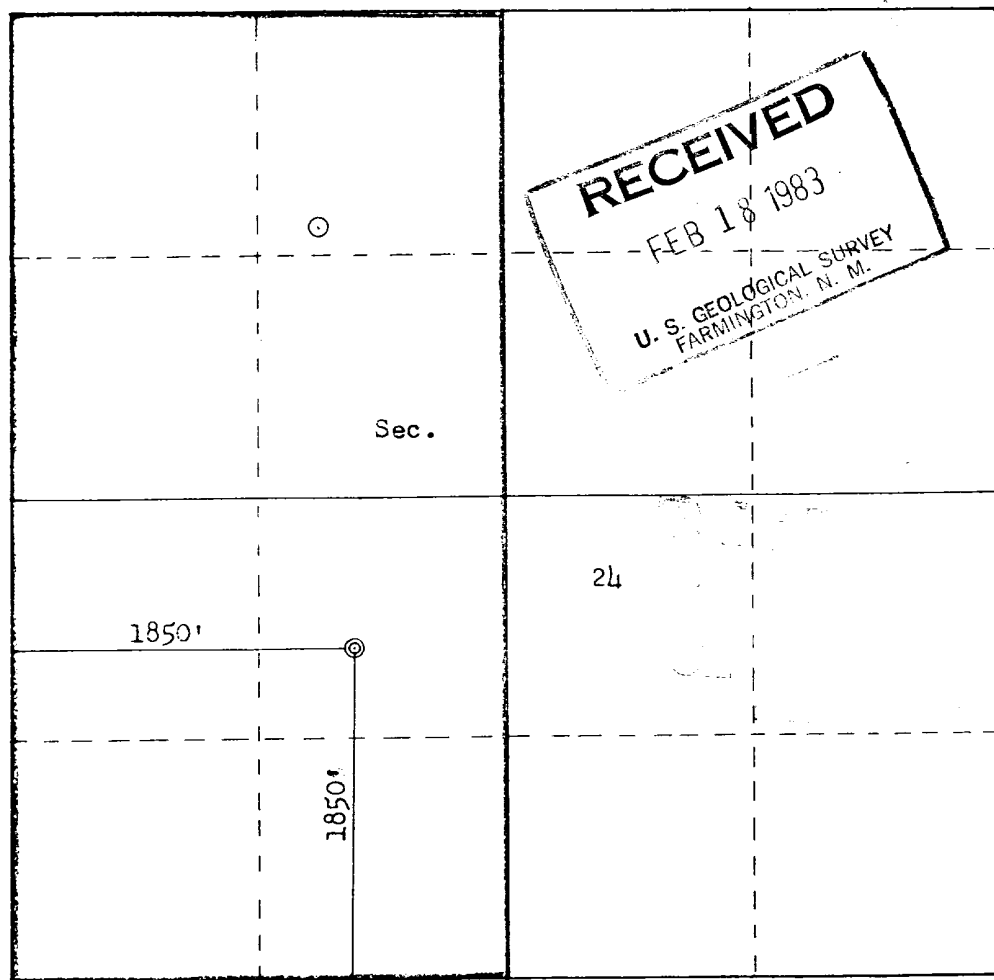
Operator AMOCO PRODUCTION COMPANY			Lease J. C. GORDON "D"		Well No. 5E
Unit Letter K	Section 24	Township 27N	Range 10W	County San Juan	
Actual Footage Location of Well: 1850 feet from the South line and 1850 feet from the West line					
Ground Level Elev. 6225	Producing Formation Dakota		Pool Basin Dakota		Dedicated Acreage: W320 Acres

1. Outline the acreage dedicated to the subject well by colored pencil or hachure marks on the plat below.
2. If more than one lease is dedicated to the well, outline each and identify the ownership thereof (both as to working interest and royalty).
3. If more than one lease of different ownership is dedicated to the well, have the interests of all owners been consolidated by communitization, unitization, force-pooling, etc?

☐ Yes ☐ No If answer is "yes," type of consolidation _____

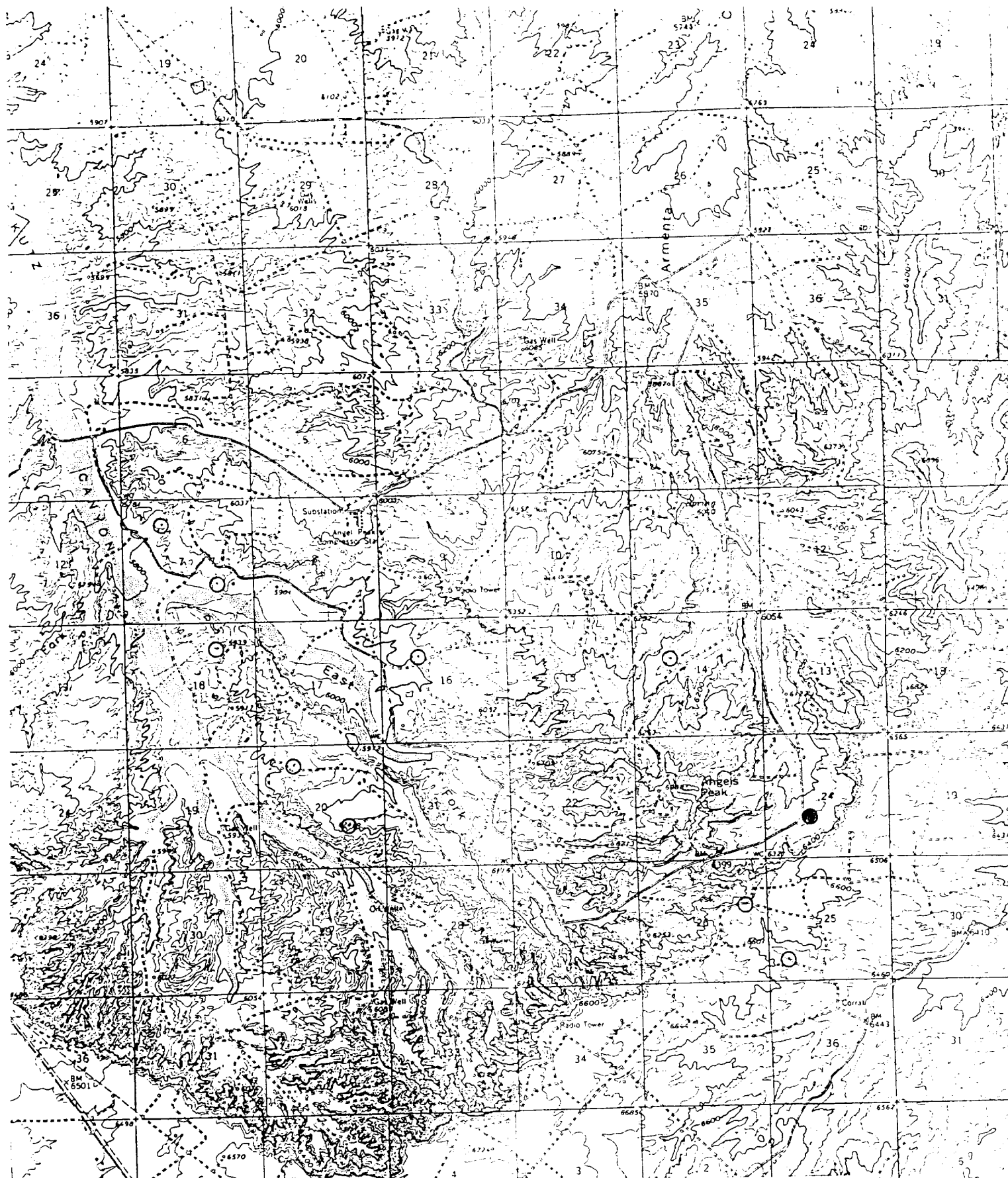
If answer is "no," list the owners and tract descriptions which have actually been consolidated. (Use reverse side of this form if necessary.) _____

No allowable will be assigned to the well until all interests have been consolidated (by communitization, unitization, forced-pooling, or otherwise) or until a non-standard unit, eliminating such interests, has been approved by the Commission.



Scale: 1"=1000'

CERTIFICATION	
I hereby certify that the information contained herein is true and complete to the best of my knowledge and belief.	
Name	D. H. SHOEMAKER
Position	DISTRICT ENGINEER
Company	AMOCO PRODUCTION COMPANY
Date	JANUARY 11, 1983
I hereby certify that the well location shown on this plat was plotted from field notes of actual surveys made by me or under my supervision, and that the same is true and correct to the best of my knowledge and belief.	
Date Surveyed	December 18, 1982
Registered Professional Engineer and Land Surveyor	Fred B. Kerr Jr.
Certificate No.	3950



Vicinity Map for
 AMOCO PRODUCTION COMPANY #5E J. C. GORDON "D"
 1850'FSL 1850'FWL Sec. 24-T27N-R10W
 SAN JUAN COUNTY, NEW MEXICO