

NO. OF COPIES RECEIVED	
DISTRIBUTION	
SANTA FE	
FILE	
U.S.G.S.	
LAND OFFICE	
OPERATOR	

5A. Indicate Type of Lease
STATE ☒ FEE ☐
5. State Oil & Gas Lease No.
E-9053-1

APPLICATION FOR PERMIT TO DRILL, DEEPEN, OR PLUG BACK

1a. Type of Work b. Type of Well DRILL <input checked="" type="checkbox"/> DEEPEN <input type="checkbox"/> PLUG BACK <input type="checkbox"/> OIL WELL <input checked="" type="checkbox"/> GAS WELL <input type="checkbox"/> OTHER <input type="checkbox"/> SINGLE ZONE <input checked="" type="checkbox"/> MULTIPLE ZONE <input type="checkbox"/>		7. Unit Agreement Name
2. Name of Operator Union Texas Petroleum Corporation		8. Farm or Lease Name State 16
3. Address of Operator P. O. Box 808, Farmington, New Mexico 87499		9. Well No. 10-3
4. Location of Well UNIT LETTER M LOCATED 881 FEET FROM THE South LINE AND 927 FEET FROM THE West LINE OF SEC. 16 TWP. 28N RGE. 9W NMPM		10. Field and Pool, or Wildcat Undesignated Gallup
12. County San Juan		
19. Proposed Depth 6627 ft.		19A. Formation Gallup
20. Rotary or C.T. Rotary		
21. Elevations (Show whether DF, RT, etc.) 6263 GR	21A. Kind & Status Plug. Bond Current \$50,000	21B. Drilling Contractor
22. Approx. Date Work will start April 22, 1983		

PROPOSED CASING AND CEMENT PROGRAM

SIZE OF HOLE	SIZE OF CASING	WEIGHT PER FOOT	SETTING DEPTH	SACKS OF CEMENT	EST. TOP
13-3/4"	9-5/8"	36.0#	300 ft.	212	Circulated
8-3/4"	7"	26.0#	5800 ft.	670	Circulated
6-1/4"	4-1/2"	11.6#	5600 - 6627 ft.	140	Top of liner

We desire to drill 13-3/4" surface hole to approx. 300 ft. using natural mud as a circulating medium. Run new 9-5/8" casing to TD. Cement with approx. 212 sx. of Class "B" cement circulated to the surface. Pressure test the casing to approx. 800 PSIG for 10 minutes. Drill 8-3/4" hole to approx. 5800 ft. using a starch base, permaloid, nondispersed mud as the circulating medium. Log the well. Run new 7" casing to TD with a DV tool at approx. 2000 ft. Cement 1st stage with approx. 295 sx. of 65/35/6 followed by approx. 100 sx. of Class "B" cement. Cement the second stage with approx. 175 sx. 65/35/12 followed by approx. 100 sx. of Class "B". Circulate cement to surface. Drill out the DV tool. Pressure test the pipe to 1500 PSIG for 10 minutes. Drill out with 6-1/4" bit to approx. 6627 ft. using natural gas as the circulating medium. Log the well. Run new 4-1/2" casing to TD and cement with approx. 140 sx. of 50/50 Poz mix. W.O.C. Perforate and fracture the Gallup zone. Clean the well up. Run new 2-3/8" EUE, 4.7#, J-55 tubing to the Gallup zone. Run rod pump and rods. Set a pumping unit and tanks. Test the well and connect to a gathering system. The gas from this well has previously been dedicated to a transporter.

NOTE: Actual cement volumes will be calculated from caliper log.

IN ABOVE SPACE DESCRIBE PROPOSED PROGRAM; IF PROPOSAL IS TO DEEPEN OR PLUG BACK, GIVE DATA ON PRESENT PRODUCTIVE ZONE AND PROPOSED NEW PRODUCTIVE ZONE. GIVE BLOWOUT PREVENTER PROGRAM, IF ANY.

I hereby certify that the information above is true and complete to the best of my knowledge and belief.

Signed W. K. Cooper Title Field Operations Manager Date March 22, 1983
(This space for State Use)

APPROVED BY Frank J. Chang TITLE Sept 25, 1983 DATE 1983

CONDITIONS OF APPROVAL, IF ANY:

OIL CONSERVATION DIVISION

STATE OF NEW MEXICO
ENERGY AND MINERALS DEPARTMENT

P. O. BOX 2088

SANTA FE, NEW MEXICO 87501

Form C-102
Revised 10-1-7

All distances must be from the outer boundaries of the Section.

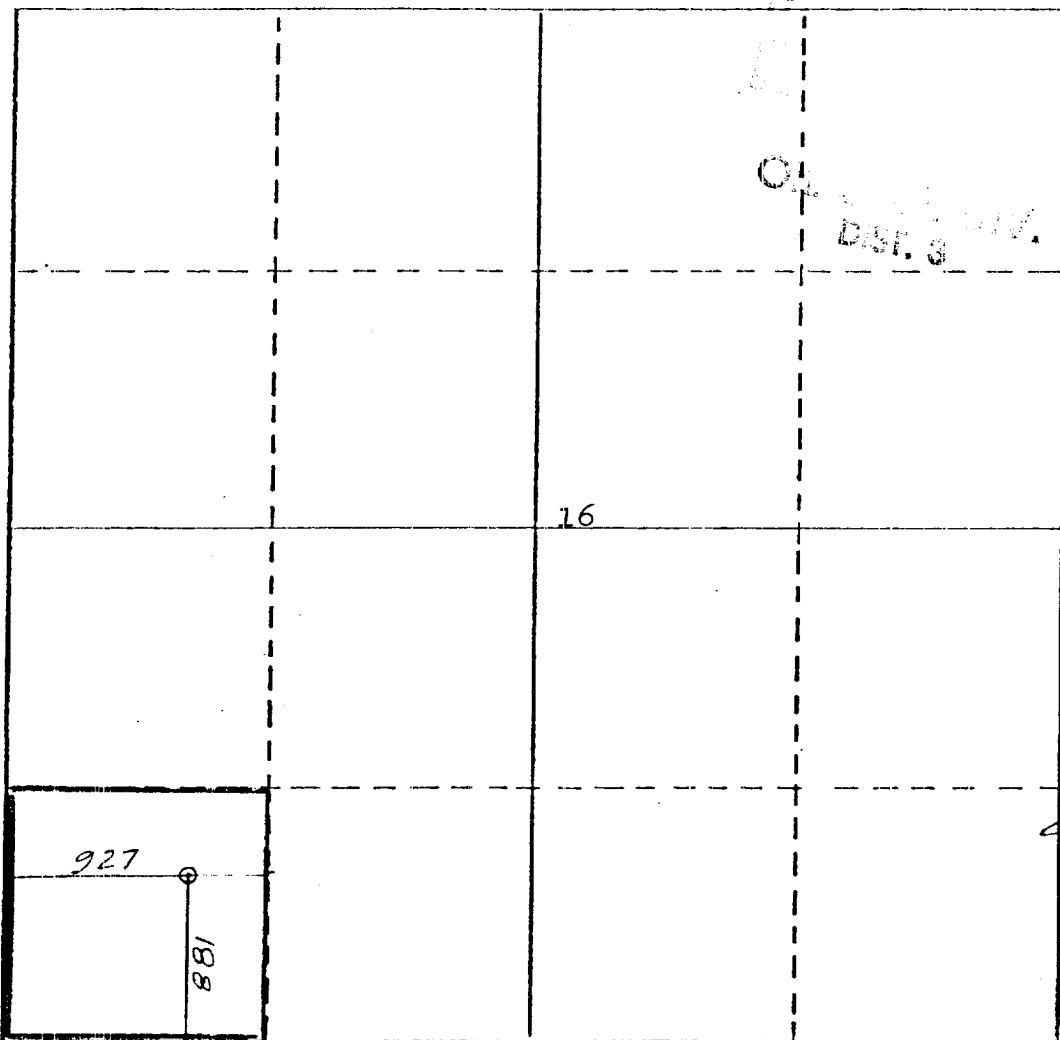
Operator UNION TEXAS PETROLEUM CORPORATION		Lease STATE 16		Well No. 16-3	
Unit Letter M	Section 16	Township 28 NORTH	Range 9 WEST	County SAN JUAN	
Actual Footage Location of Well: 881 feet from the SOUTH line and 927 feet from the WEST line					
Ground Level Elev. 6263	Producing Formation Gallup		Pool Undesignated Gallup		Dedicated Acreage: SW SW 40.00 Acres

1. Outline the acreage dedicated to the subject well by colored pencil or hachure marks on the plat below.
2. If more than one lease is dedicated to the well, outline each and identify the ownership thereof (both as to working interest and royalty).
3. If more than one lease of different ownership is dedicated to the well, have the interests of all owners been consolidated by communitization, unitization, force-pooling, etc?

☐ Yes ☒ No If answer is "yes," type of consolidation _____

If answer is "no," list the owners and tract descriptions which have actually been consolidated. (Use reverse side of this form if necessary.) _____

No allowable will be assigned to the well until all interests have been consolidated (by communitization, unitization, forced-pooling, or otherwise) or until a non-standard unit, eliminating such interests, has been approved by the Division



CERTIFICATION

I hereby certify that the information contained herein is true and complete to the best of my knowledge and belief,

Andy D. Mott
Name

Andy D. Mott
Position
Area Operations Manager

Company
Union Texas Petroleum Corp.

Date
March 10, 1983

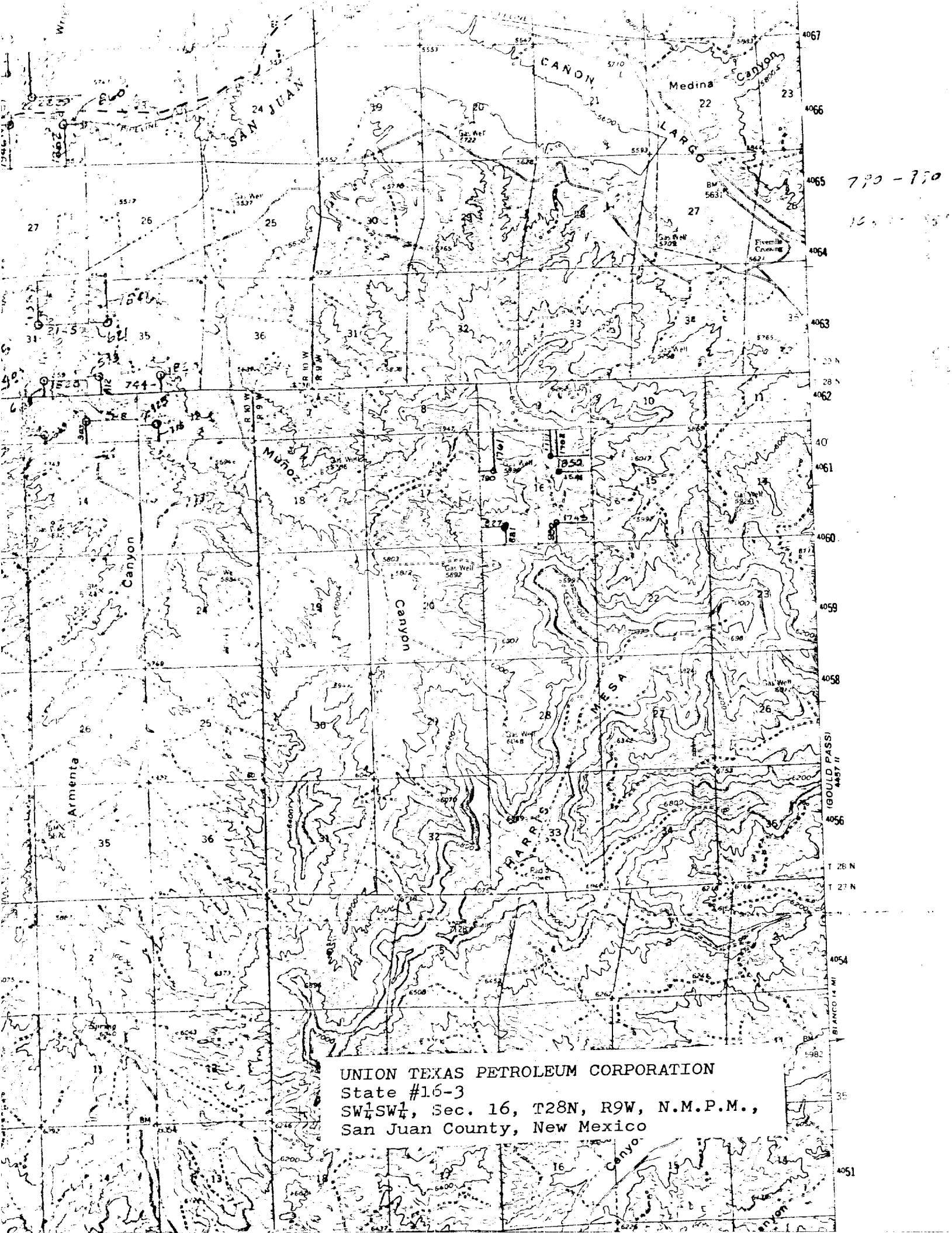
I hereby certify the well location shown on this plat was plotted from field notes of actual surveys made by me or under my supervision, and that the same is true and correct to the best of my knowledge and belief.

Michael Daly
Date Surveyed
February 28, 1983

Registered Professional Engineer
and/or Land Surveyor

Michael Daly

Certificate No.
5992



UNION TEXAS PETROLEUM CORPORATION
State #16-3
SW $\frac{1}{4}$ SW $\frac{1}{4}$, Sec. 16, T28N, R9W, N.M.P.M.,
San Juan County, New Mexico