

NO. OF COPIES RECEIVED	
DISTRIBUTION	
SANTA FE	
FILE	
U.S.G.S.	
LAND OFFICE	
OPERATOR	

5A. Indicate Type of Lease

STATE ☒FEE ☐

5. State Oil & Gas Lease No.

See Attached

APPLICATION FOR PERMIT TO DRILL, DEEPEN, OR PLUG BACK

1a. Type of Work b. Type of Well OIL WELL <input checked="" type="checkbox"/> GAS WELL <input type="checkbox"/> OTHER <input type="checkbox"/> DRILL <input checked="" type="checkbox"/> DEEPEN <input type="checkbox"/> PLUG-BACK <input type="checkbox"/> SINGLE ZONE <input type="checkbox"/> MULTIPLE ZONE <input checked="" type="checkbox"/>		7. Unit Agreement Name
2. Name of Operator Union Texas Petroleum Corporation		8. Farm or Lease Name State Com
3. Address of Operator P. O. Box 808, Farmington, New Mexico 87499		9. Well No. 1-E
4. Location of Well UNIT LETTER 0 LOCATED 990 FEET FROM THE South LINE AND 1745 FEET FROM THE East LINE OF SEC. 16 TWP. 23N RGE. 9W NMPM		10. Field and Pool, or Wildcat Undes Gal/Basin Dakota
21. Elevations (Show whether DF, RT, etc.) 6300 GR		12. County San Juan
21A. Kind & Status Plug. Bond Current \$50,000	19. Proposed Depth 7275 ft.	19A. Formation Gallup/Dakota
21B. Drilling Contractor	20. Rotary or C.T. Rotary	22. Approx. Date Work will start April 22, 1983

23.

PROPOSED CASING AND CEMENT PROGRAM

SIZE OF HOLE	SIZE OF CASING	WEIGHT PER FOOT	SETTING DEPTH	SACKS OF CEMENT	EST. TOP
17-1/2"	13-3/8"	48.0#	300 ft.	255	Circulated
12-1/4"	9-5/8"	40.0#	6000 ft.	1250	Circulated
8-1/2"	7"	26.0#	5800 - 7275 ft.	260	Top of liner

We desire to drill 17-1/2" surface hole to approx. 300 ft. using natural mud as the circulating medium. Run new 13-3/8" casing to TD. Cement with approx. 255 sx. of Class "B" cement circulated to the surface. Pressure test the casing to approx. 300 PSIG for 10 minutes. Drill 12-1/4" hole to approx. 6000 ft, using a starch base, permaloid, nondispersed mud as the circulating medium. Log the well. Run new 9-5/8" casing to TD with a DV tool at approx. 2000 ft. Cement first stage with approx. 700 sx. of 65/35/6 followed by approx. 100 sx. of Class "B" cement. Cement second stage with approx. 350 sx. of 65/35/12 followed by approx. 100 sx. of Class "B". Circulate cement to surface. Drill out DV tool. Pressure test the pipe to approx. 1500 PSIG for 10 minutes. Drill out with 8-1/2" bit to approx. 7275 ft. using natural gas as the circulating medium. Log the well. Run new 7" casing to TD and cement with approx. 260 sx. of 50/50 Poz mix. W.O.C. Perforate and fracture the Dakota zone. Perforate and fracture the Gallup zone. Clean the well up. Run dual strings of 2-3/8", 4.7#, J-55 tubing with a long string packer set at 6900'. Run a pump and rods on the short (Gallup) string. Set a pumping unit and tanks. Test the well and connect to gathering system. The gas from this well has previously been dedicated to a transporter.

NOTE: Actual cement volumes to be calculated from caliper log.

IN ABOVE SPACE DESCRIBE PROPOSED PROGRAM; IF PROPOSAL IS TO DEEPEN OR PLUG BACK, GIVE DATA ON PRESENT PRODUCTIVE ZONE AND PROPOSED NEW PRODUCTIVE ZONE. GIVE BLOWOUT PREVENTER PROGRAM, IF ANY.

I hereby certify that the information above is true and complete to the best of my knowledge and belief.

Signed W.K. Cooper Title Field Operations Manager Date March 22, 1983

(This space for State Use)

SUPERVISOR DISTRICT # 3

APPROVED BY 3rd 7. (Signature) TITLE _____ DATE MAR 25 1983

CONDITIONS OF APPROVAL, IF ANY:

APPROVAL EXPIRES Sept. 25, 1983
UNLESS OTHERWISE SPECIFIED,
SPUD NOT TO BE STARTED
WITHIN _____

Union Texas
Petroleum

P.O. Box 808
Farmington, N.M. 87401

5. STATE OIL & GAS LEASE NO.

Gallup - B-11017-39

- Dakota - E-6635-1, E-588-2, E-2131-3, B-11017-35, E-4959-1

OIL CONSERVATION DIVISION

STATE OF NEW MEXICO
ENERGY AND MINERALS DEPARTMENTP. O. BOX 2088
SANTA FE, NEW MEXICO 87501Form C-102
Revised 10-1-7

All distances must be from the outer boundaries of the Section.

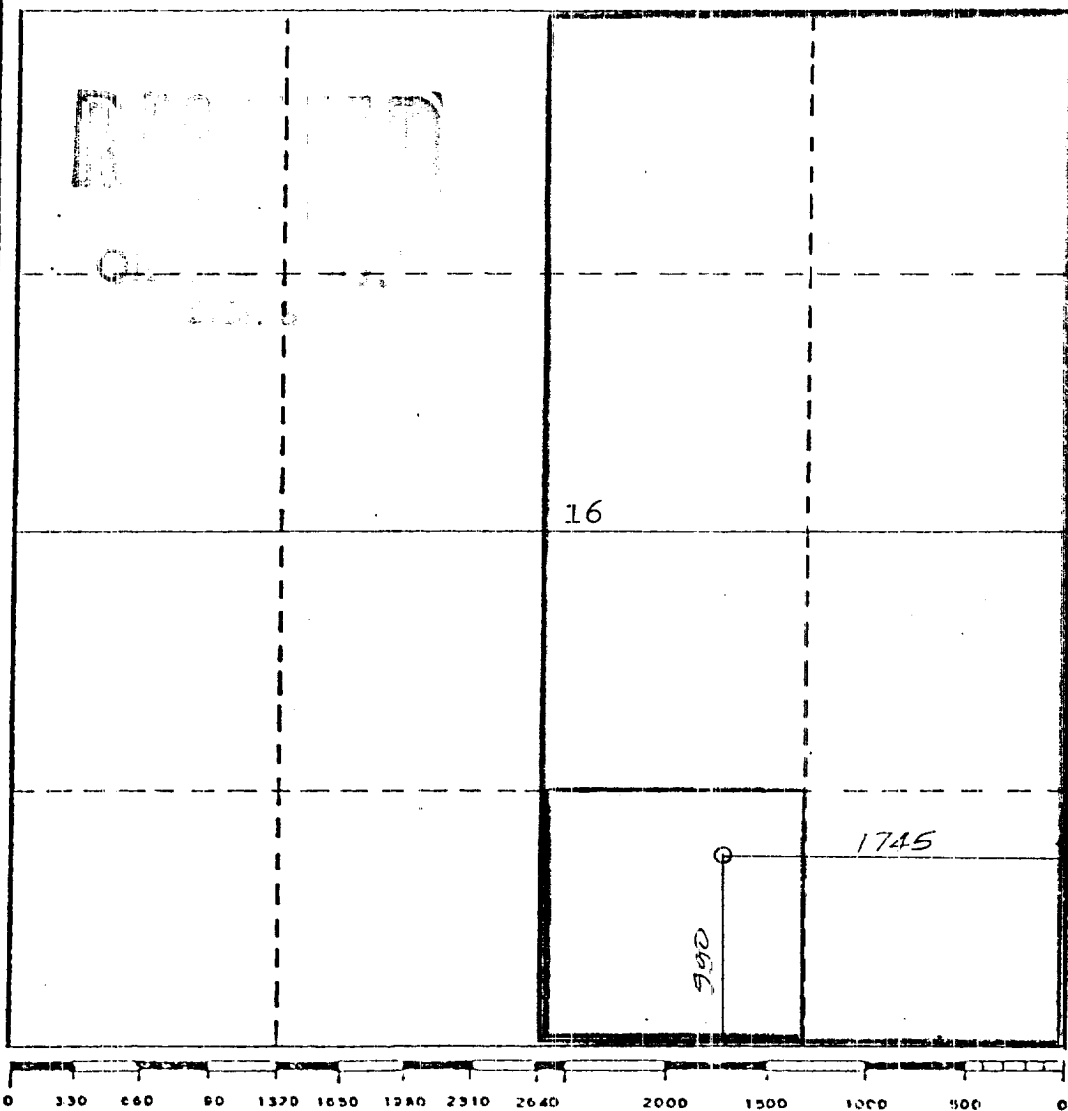
Operator UNION TEXAS PETROLEUM CORPORATION		Lease STATE COMM		Well No. 1-E	
Unit Letter 0	Section 16	Township 28 NORTH	Range 9 WEST	County SAN JUAN	
Actual Footage Location of Well: 990 feet from the SOUTH line and 1745 feet from the EAST line					
Ground Level Elev. 6300	Producing Formation Dakota/Gallup		Pool Basin Dakota/Undesignated Gallup		Dedicated Acreage: 4 3/320/545E 40 Acres

1. Outline the acreage dedicated to the subject well by colored pencil or hachure marks on the plat below.
2. If more than one lease is dedicated to the well, outline each and identify the ownership thereof (both as to working interest and royalty).
3. If more than one lease of different ownership is dedicated to the well, have the interests of all owners been consolidated by communitization, unitization, force-pooling, etc?

☒ Yes ☐ No If answer is "yes," type of consolidation Communitization Agreement State No. 1-16

If answer is "no," list the owners and tract descriptions which have actually been consolidated. (Use reverse side of this form if necessary.)

No allowable will be assigned to the well until all interests have been consolidated (by communitization, unitization, forced-pooling, or otherwise) or until a non-standard unit, eliminating such interests, has been approved by the Division



CERTIFICATION

I hereby certify that the information contained herein is true and complete to the best of my knowledge and belief.

Name

Rudy L. Motto

Position

Area Operations Manager

Company

Union Texas Petroleum Corp.

Date

March 10, 1963

I hereby certify that the well location shown on the plat was plotted from field notes of actual surveys made by me or under my supervision and that the same is true and correct to the best of my knowledge and belief.

Date Surveyed

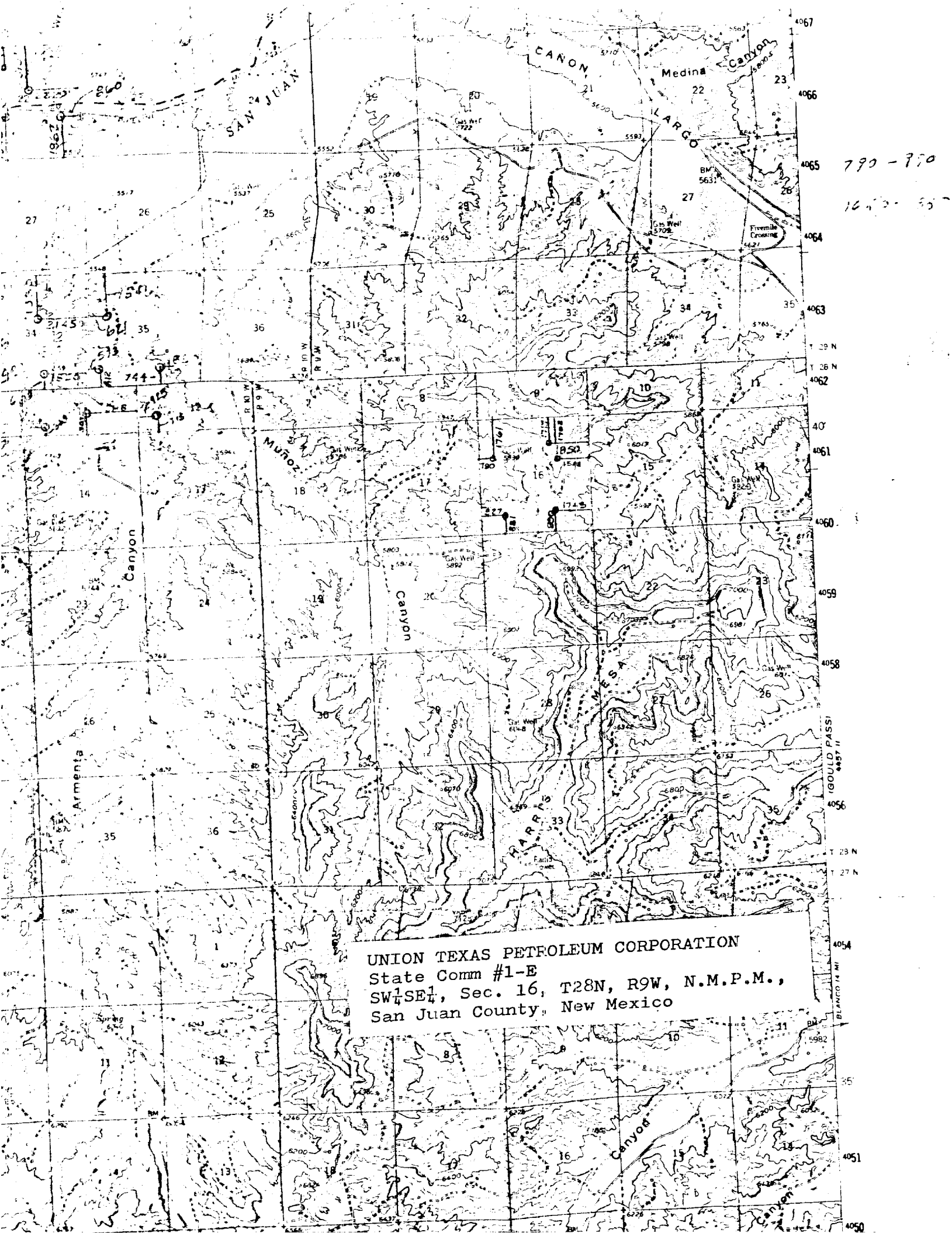
February 28, 1983

Registered Professional Engineer
and/or Land Surveyor

Michael Daly

Certificate No.

5992



790-770

1640-35

UNION TEXAS PETROLEUM CORPORATION
State Comm #1-E
SW 1/4 SE 1/4, Sec. 16, T28N, R9W, N.M.P.M.,
San Juan County, New Mexico