

UNITED STATES
DEPARTMENT OF THE INTERIOR
GEOLOGICAL SURVEY

APPLICATION FOR PERMIT TO DRILL, DEEPEN, OR PLUG BACK

1a. TYPE OF WORK

DRILL ☒DEEPEN ☐PLUG BACK ☐

b. TYPE OF WELL

OIL
WELL ☐GAS
WELL ☒

OTHER

SINGLE
ZONE ☒MULTIPLE
ZONE ☐

2. NAME OF OPERATOR

Southland Royalty Company

3. ADDRESS OF OPERATOR

P. O. Drawer 570, Farmington, New Mexico 87499

4. LOCATION OF WELL (Report location clearly and in accordance with applicable requirements.)

At surface
1120' FNL & 790' FEL

At proposed prod. zone

14. DISTANCE IN MILES AND DIRECTION FROM NEAREST TOWN OR POST OFFICE*

10 miles South of Farmington, New Mexico

15. DISTANCE FROM PROPOSED*

LOCATION TO NEAREST
PROPERTY OR LEASE LINE, FT.
(Also to nearest drlg. unit line, if any)

790'

18. DISTANCE FROM PROPOSED LOCATION*
TO NEAREST WELL, DRILLING, COMPLETED,
OR APPLIED FOR, ON THIS LEASE, FT.

19. PROPOSED DEPTH

6055'

21. ELEVATIONS (Show whether DF, RT, GR, etc.)

5835' GL

DRILLING OPERATIONS AUTHORIZED ARE
SUBJECT TO COMPLIANCE WITH ATTACHED

"GENERAL REQUIREMENTS"

PROPOSED CASING AND CEMENTING PROGRAM

17. NO. OF ACRES ASSIGNED
TO THIS WELL

E 320

20. ROTARY OR CABLE TOOLS

Rotary

22. APPROX. DATE WORK WILL START*

May 27, 1983

This action is subject to administrative
appeal pursuant to 30 CFR 290.

SIZE OF HOLE	SIZE OF CASING	WEIGHT PER FOOT	SETTING DEPTH
12-1/4"	8-5/8"	24#, K-55	200'
7-7/8"	4-1/2"	10.5#, K-55	6055'

165 cu.ft. (Circulate to surface)
Stge 1: 432 cu.ft. (Cover Gallup)
Stge 2: 659 cu.ft. (Cover Cliff
House)
Stge 3: 266 cu.ft. (Cover Fruitland)

Surface formation is Ojo Alamo Sandstone.

Base of Ojo Alamo sand is at 180'.

Top of Pictured Cliffs sand is at 1230'.

Fresh water mud will be used to drill from surface to total depth.

It is anticipated that an IEL will be run from total depth to surface casing, GR-Density
will be run from total depth to surface casing and CNL will be run from total depth to
surface casing.

No abnormal pressures or poisonous gases are anticipated in this well.

It is expected that this well will be drilled before July 1, 1983.

This depends on time required for approvals, rig availability and the weather.

Gas is not dedicated.

IN ABOVE SPACE DESCRIBE PROPOSED PROGRAM: If proposal is to deepen or plug back, give data on present productive zone and proposed new productive zone. If proposal is to drill or deepen directionally, give pertinent data on subsurface locations and measured and true vertical depths. Give blowout preventer program, if any.

24. SIGNED R. E. Fields TITLE District Engineer DATE April 15, 1983

(This space for Federal or State office use)

PERMIT NO. _____

APPROVAL DATE _____

APPROVED BY _____

TITLE _____

CONDITIONS OF APPROVAL, IF ANY:

APPROVED
AS AMENDED

DATE

MAY 18 1983

JAMES F. SIMS

DISTRICT ENGINEER

Acting Asst. Manager

NMCCG

OIL CONSERVATION DIVISION

P. O. BOX 2048

SANTA FE, NEW MEXICO 87501

Form C-107
Revised 10-1-78STATE OF NEW MEXICO
ENERGY AND MINERALS DEPARTMENT

All distances must be from the outer boundaries of the Section.

Operator SOUTHLAND ROYALTY COMPANY			Lease HUGH LAKE		Well No. 2
Unit Letter A	Section 29	Township 27N	Range 12W	County San Juan	
Actual Footage Location of Well: 1120 feet from the North line and 790 feet from the East line					
Ground Level Elev. 5835' GL	Producing Formation Dakota	Pool Basin		Dedicated Acreage: E 320 Acres	

1. Outline the acreage dedicated to the subject well by colored pencil or hachure marks on the plat below.
2. If more than one lease is dedicated to the well, outline each and identify the ownership thereof (both as to working interest and royalty).
3. If more than one lease of different ownership is dedicated to the well, have the interests of all owners been consolidated by communitization, unitization, force-pooling, etc?

☐ Yes ☐ No If answer is "yes," type of consolidation _____

If answer is "no," list the owners and tract descriptions which have actually been consolidated. (Use reverse side of this form if necessary.) _____

No allowable will be assigned to the well until all interests have been consolidated (by communitization, unitization, forced-pooling, or otherwise) or until a non-standard unit, eliminating such interests, has been approved by the Commission.

Scale: 1"=1000'

CERTIFICATION

I hereby certify that the information contained herein is true and complete to the best of my knowledge and belief.

R. E. Fielder

Name

R. E. Fielder

Position

District Engineer

Company

Southland Royalty Company

Date

April 15, 1983

I hereby certify that the well location shown on this plat was plotted from field notes of actual surveys made by me or under my supervision, and that the same is true and correct to the best of my knowledge and belief.

Date Surveyed

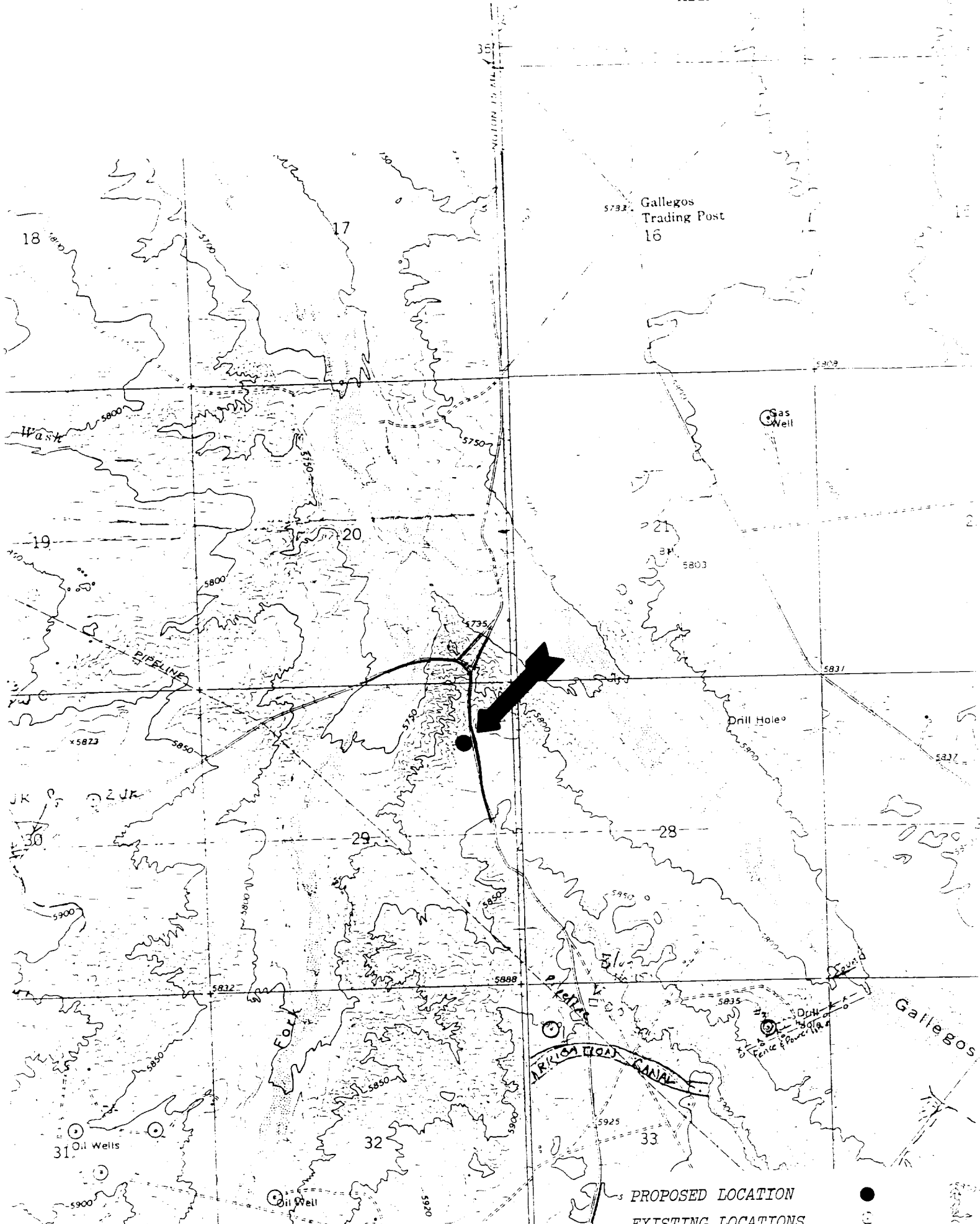
April 11, 1983

Registered Professional Engineer
and Land Surveyor

Fred B. Kerr Jr.
Fred B. Kerr Jr.

Certificate No.

3950



PROPOSED LOCATION
EXISTING LOCATIONS