

UNITED STATES
DEPARTMENT OF THE INTERIOR
BUREAU OF LAND MANAGEMENT

APPLICATION FOR PERMIT TO DRILL, DEEPEN, OR PLUG BACK

1a. TYPE OF WORK

DRILL ☒

DEEPEN ☐

PLUG BACK ☐

b. TYPE OF WELL

OIL
WELL ☐

GAS
WELL ☒

OTHER

SINGLE
ZONE ☒

MULTIPLE
ZONE ☐

2. NAME OF OPERATOR

Southland Royalty Company

3. ADDRESS OF OPERATOR

P. O. Drawer 570, Farmington, New Mexico 87499

4. LOCATION OF WELL (Report location clearly and in accordance with any State requirements.)

At surface

940' FSL & 790' FWL

At proposed prod. zone

14. DISTANCE IN MILES AND DIRECTION FROM NEAREST TOWN OR POST OFFICE*

10 miles South of Bloomfield, New Mexico

15. DISTANCE FROM PROPOSED*

LOCATION TO NEAREST
PROPERTY OR LEASE LINE, FT.
(Also to nearest drig. unit line, if any)

790'

16. NO. OF ACRES IN LEASE

1121.76 *2401.76*

17. NO. OF ACRES ASSIGNED
TO THIS WELL

W 320

18. DISTANCE FROM PROPOSED LOCATION*

TO NEAREST WELL, DRILLING, COMPLETED,
OR APPLIED FOR, ON THIS LEASE, FT.

1000'

19. PROPOSED DEPTH

6700'

20. ROTARY OR CABLE TOOLS

Rotary

21. ELEVATIONS (Show whether DF, RT, GR, etc.)

6195' GL

DRILLING OPERATIONS AUTHORIZED ARE
SUBJECT TO COMPLIANCE WITH ATTACHED
"GENERAL PROPOSED CASING AND CEMENTING PROGRAM
REQUIREMENTS"

22. APPROX. DATE WORK WILL START*

July 15, 1984

23. This action is subject to administrative
appeal pursuant to 30 CFR 290.

SIZE OF HOLE	SIZE OF CASING	WEIGHT PER FOOT	SETTING DEPTH	QUANTITY OF CEMENT
12-1/4"	New 8-5/8"	24#, K-55	200'	165 cu.ft. (Circulate to surface)
7-7/8"	New 4-1/2"	10.5#, K-55	6700'	Stge 1: 399 cu.ft. (Cover Gallup)
				Stge 2: 407 cu.ft. (Cover Cliff House)
				Stge 3: 399 cu.ft. (Cover Ojo Alamo)

Surface formation is Nacimiento.

Top of Ojo Alamo sand is at 770'.

Top of Pictured Cliffs sand is at 1968'.

Fresh water mud will be used to drill from surface to total depth.

It is anticipated that an IEL will be run from total depth to surface casing and a

GR-CNL/FDC will be run from total depth to surface casing.

No abnormal pressures or poisonous gases are anticipated in this well.

It is expected that this well will be drilled before August 15, 1984.

This depends on time required for approvals, rig availability and the weather.

Gas is dedicated.

IN ABOVE SPACE DESCRIBE PROPOSED PROGRAM: If proposal is to deepen or plug back, give data on present productive zone and proposed new productive zone. If proposal is to drill or deepen directionally, give pertinent data on subsurface locations and measured and true vertical depths. Give blowout preventer program, if any.

24.

SIGNED

TITLE Dist. Operations Engineer

DATE 6-7-84

(This space for Federal or State office use)

PERMIT NO.

APPROVAL DATE

APPROVED

AS AMENDED

APPROVED

TITLE

DATE

CONDITIONS OF APPROVAL, IF ANY 1984

JUN 22 1984
OIL CON. DIV.
DIST. 3

*See Instructions On Reverse Side

M. MILLENBACH

Title 18 U.S.C. Section 1001, makes it a crime for any person knowingly and willfully to make to any department or agency of the United States any false, fictitious or fraudulent statements or representations as to any matter within its jurisdiction.

OIL CONSERVATION DIVISION

P. O. BOX 2088

SANTA FE, NEW MEXICO 87501

Form C-107
Revised 10-1-78

All distances must be from the outer boundaries of the Section.

Operator Southland Royalty Company			Lease Frontier B		Well No. 2E
Unit Letter M	Section 9	Township 27N	Range 11W	County San Juan	
Actual Footage Location of Well: 940 feet from the South line and 790 feet from the West line					
Ground Level Elev: 6195' GL	Producing Formation Dakota		Pool Basin	Dedicated Acreage: 320 Acres	

1. Outline the acreage dedicated to the subject well by colored pencil or hachure marks on the plat below.
2. If more than one lease is dedicated to the well, outline each and identify the ownership thereof (both as to working interest and royalty).
3. If more than one lease of different ownership is dedicated to the well, have the interests of all owners been consolidated by communitization, unitization, force-pooling, etc?

☐ Yes ☐ No If answer is "yes," type of consolidation _____

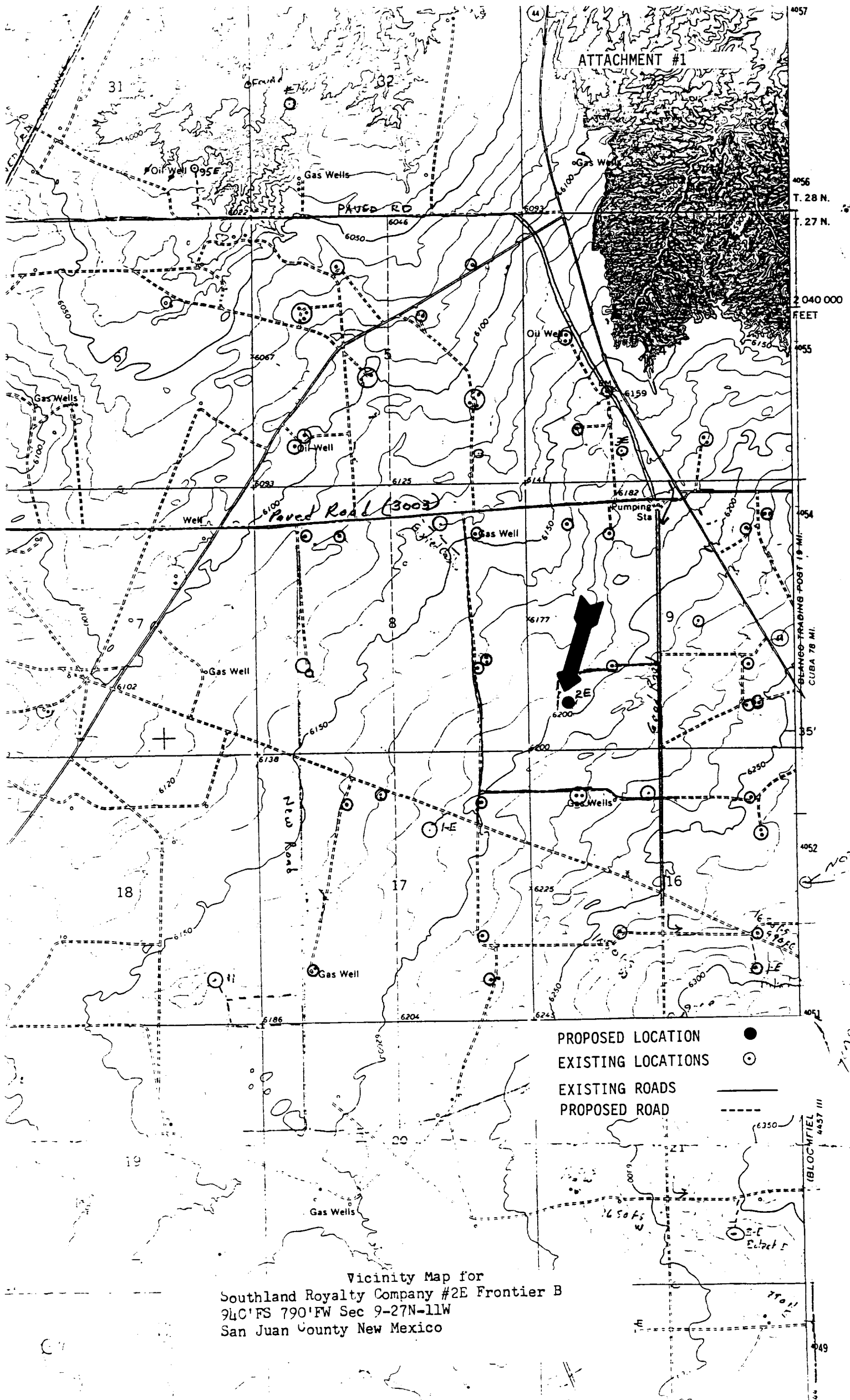
If answer is "no," list the owners and tract descriptions which have actually been consolidated. (Use reverse side of this form if necessary.) _____

No allowable will be assigned to the well until all interests have been consolidated (by communitization, unitization, forced-pooling, or otherwise) or until a non-standard unit, eliminating such interests, has been approved by the Commission.

		<p style="text-align: center;">RECEIVED JUN 22 1984 OIL CON. DIV.</p>	
		<p style="text-align: center;">Sec</p>	
SF-078872-A		9	

Scale: 1"=1000'

CERTIFICATION	
<p>I hereby certify that the information contained herein is true and complete to the best of my knowledge and belief.</p>	
<p><i>[Signature]</i></p>	
Name	C. Terry Hobbs
Position	District Operations Engineer
Company	Southland Royalty Company
Date	June 7, 1984
<p>I hereby certify that the well location shown on this plat was plotted from field notes of actual surveys made by me or under my supervision, and that the same is true and correct to the best of my knowledge and belief.</p>	
Date Surveyed	April 12, 1984
Registered Professional Engineer and Land Surveyor	<p><i>[Signature]</i> Fred E. Kerr Jr.</p>
Certificate No.	3950



Vicinity Map for
Southland Royalty Company #2E Frontier B
94C'FS 790'FW Sec 9-27N-11W
San Juan County New Mexico