

UNITED STATES
DEPARTMENT OF THE INTERIOR
BUREAU OF LAND MANAGEMENT

APPLICATION FOR PERMIT TO DRILL, DEEPEN, OR PLUG BACK

1A. TYPE OF WORK
DRILL ☒ DEEPEN ☐ PLUG BACK ☐

B. TYPE OF WELL
OIL WELL ☐ GAS WELL ☒ OTHER ☐ SINGLE ZONE ☒ MULTIPLE ZONE ☐

2. NAME OF OPERATOR
Southland Royalty Company

3. ADDRESS OF OPERATOR
P. O. Drawer 570, Farmington, New Mexico 87499

4. LOCATION OF WELL (Report location clearly and in accordance with any State requirements.)
At surface
605' FSL & 1945' FWL
At proposed prod. zone

14. DISTANCE IN MILES AND DIRECTION FROM NEAREST TOWN OR POST OFFICE*
11 miles South of Bloomfield, New Mexico

15. DISTANCE FROM PROPOSED* LOCATION TO NEAREST PROPERTY OR LEASE LINE, FT.
(Also to nearest drig. unit line, if any)
605'

19. DISTANCE FROM PROPOSED LOCATION* TO NEAREST WELL, DRILLING, COMPLETED, OR APPLIED FOR, ON THIS LEASE, FT.
1000'

21. ELEVATIONS (Show whether DF, RT, or M)
6174' GL
DRILLING OPERATIONS AUTHORIZED ARE
SUBJECT TO COMPLIANCE WITH ATTACHED

23. "GENERAL PROPOSED PROGRAM AND CEMENTING PROGRAM"

SIZE OF HOLE	SIZE OF CASING	WEIGHT PER FOOT	SETTING DEPTH
12-1/4"	New 8-5/8"	24#, K-55	200'
7-7/8"	New 4-1/2"	10.5#, K-55	6750'

5. LEASE DESIGNATION AND SERIAL NO.

SF-078872-A

6. IF INDIAN, ALLOTTEE OR TRIBE NAME

7. UNIT AGREEMENT NAME

8. FARM OR LEASE NAME

Frontier "B"

9. WELL NO.

3E

10. FIELD AND POOL, OR WILDCAT

Basin Dakota

11. SEC., T., R., M., OR BLK. AND SURVEY OR AREA

Section 4, T27N, R11W

12. COUNTY OR PARISH

San Juan

13. STATE

New Mexico

17. NO. OF ACRES ASSIGNED TO THIS WELL

320.70

20. ROTARY OR CABLE TOOLS

Rotary

22. APPROX. DATE WORK WILL START*

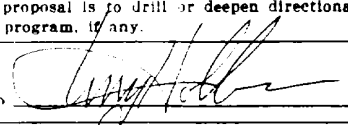
August 15, 1984

This action is subject to administrative appeal pursuant to 30 CFR 290.

165 cu.ft. (Circulate to surface)
Stage 1: 399 cu.ft. (Cover Gallup)
Stage 2: 407 cu.ft. (Cover Cliff House)
Stage 3: 399 cu.ft. (Cover Ojo Alamo)

Surface formation is Nacimiento.
Top of Ojo Alamo sand is at 733'.
Top of Pictured Cliffs sand is at 1931'.
Fresh water mud will be used to drill from surface to total depth.
It is anticipated that an IEL will be run from total depth to surface casing, and a GR-CNL/FDC will be run from total depth to surface casing.
No abnormal pressures or poisonous gases are anticipated in this well.
It is expected that this well will be drilled before September 15, 1984.
This depends on time required for approvals, rig availability and the weather.
Gas is dedicated.

IN ABOVE SPACE DESCRIBE PROPOSED PROGRAM: If proposal is to deepen or plug back, give data on present productive zone and proposed new productive zone. If proposal is to drill or deepen directionally, give pertinent data on subsurface locations and measured and true vertical depths. Give blowout preventer program, if any.

24. SIGNED 

TITLE District Operations Engineer

(This space for Federal or State office use)

PERMIT NO.

APPROVAL DATE

APPROVED BY

TITLE

CONDITIONS

RECEIVED

SEP 05 1984

OIL CON. DIV
DIST. 3

NMOCC

*See Instructions On Reverse Side

APPROVED
DATE 6-7-84
AS AMENDED
AUG 31 1984
DATE
ASST. AREA MANAGER
FARMINGTON RESOURCE AREA

OIL CONSERVATION DIVISION

P. O. BOX 2088

STATE OF NEW MEXICO
ENERGY AND MINERALS DEPARTMENT

SANTA FE, NEW MEXICO 87501

Form C-107
Revised 10-1-78

All distances must be from the outer boundaries of the Section.

Operator Southland Royalty Company			Lease Frontier 9		Well No. 3E
Unit Letter N	Section 4	Township 27N	Range 11W	County San Juan	
Actual Footage Location of Well: 605 feet from the South line and 1945 feet from the West line					
Ground Level Elev: 6174' GL	Producing Formation Dakota		Pool Basin	Dedicated Acreage: 320.20 Acres	

1. Outline the acreage dedicated to the subject well by colored pencil or hachure marks on the plat below.
2. If more than one lease is dedicated to the well, outline each and identify the ownership thereof (both as to working interest and royalty).
3. If more than one lease of different ownership is dedicated to the well, have the interests of all owners been consolidated by communitization, unitization, force-pooling, etc?

☐ Yes ☐ No If answer is "yes," type of consolidation _____

If answer is "no," list the owners and tract descriptions which have actually been consolidated. (Use reverse side of this form if necessary.) _____

No allowable will be assigned to the well until all interests have been consolidated (by communitization, unitization, forced-pooling, or otherwise) or until a non-standard unit, eliminating such interests, has been approved by the Commission.

		<p>Sec</p> <p>4</p> <p>SF-078872-A</p> <p>1945'</p> <p>605'</p>
--	--	---

Scale: 1"=1000'

CERTIFICATION

I hereby certify that the information contained herein is true and complete to the best of my knowledge and belief.

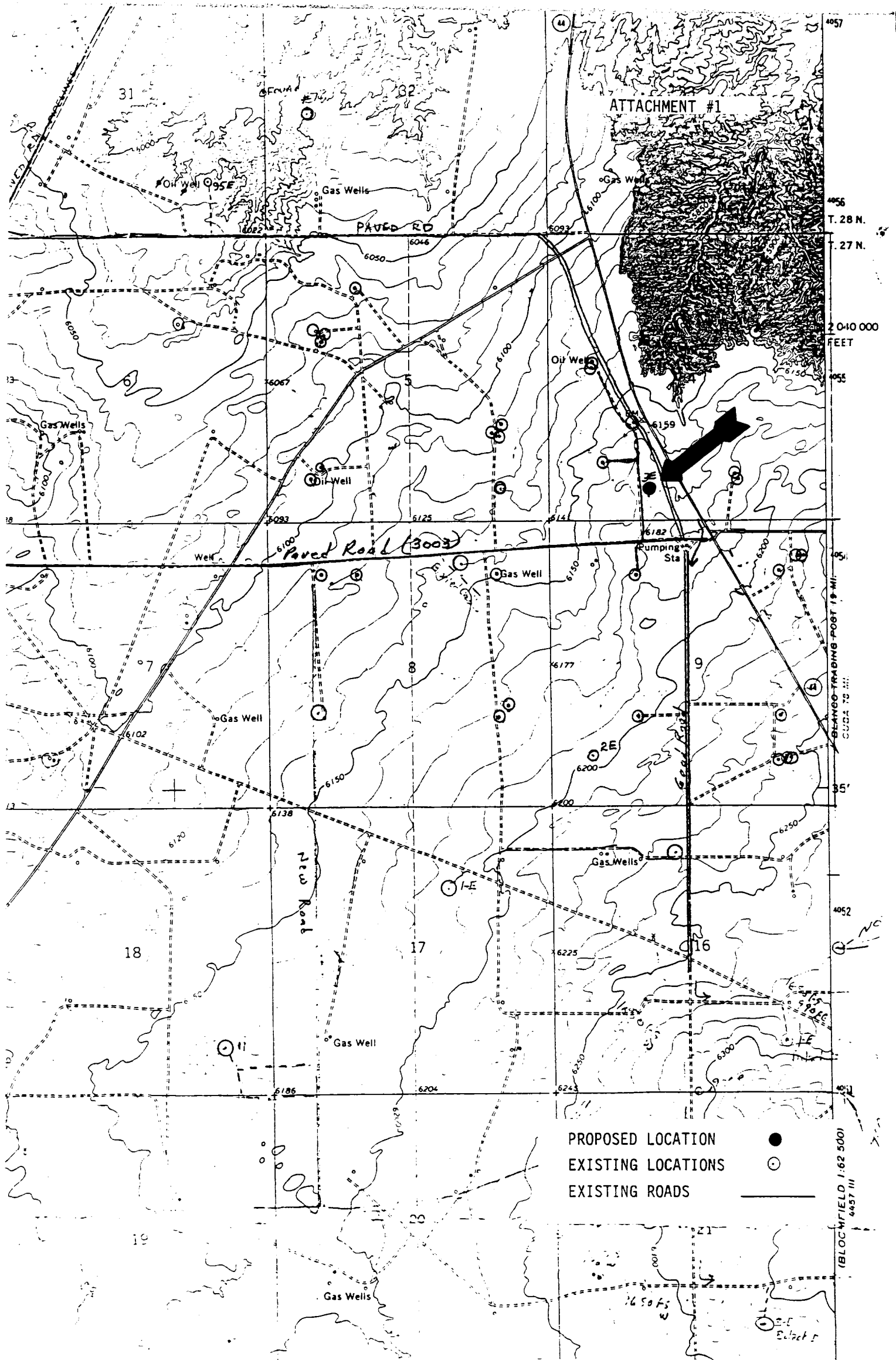
Name
C. Terry Hobbs
Position
District Operations Engineer
Company
Southland Royalty Company
Date
June 7, 1984

I hereby certify that the well location shown on this plat was plotted from field notes of actual surveys made by me or under my supervision, and that the same is true and correct to the best of my knowledge and belief.

Date Surveyed
April 12, 1984
Registered Professional Engineer
and Land Surveyor

Fred E. Kerr Jr.

Certificate No.
3950



Vicinity Map for
 Southland Royalty Company #3E Frontier B
 605'FS 1945'FW Sec 4-27N-11W
 San Juan County New Mexico