

UNITED STATES  
DEPARTMENT OF THE INTERIOR  
GEOLOGICAL SURVEY

## APPLICATION FOR PERMIT TO DRILL, DEEPEN, OR PLUG BACK

## 1a. TYPE OF WORK

DRILL ☒DEEPEN ☐PLUG BACK ☐

## b. TYPE OF WELL

OIL  
WELL ☐GAS  
WELL ☒

OTHER

SINGLE  
ZONE ☒MULTIPLE  
ZONE ☐

## 2. NAME OF OPERATOR

Energy Reserves Group, Inc.

## 3. ADDRESS OF OPERATOR

P. O. Box 3280; Casper, WY 82602

4. LOCATION OF WELL (Report location clearly and in accordance with any State requirements.)\*  
At surface

790' FNL, 1600' FWL

At proposed prod. zone

## 14. DISTANCE IN MILES AND DIRECTION FROM NEAREST TOWN OR POST OFFICE

Approx. 12 miles southeast from Farmington, NM

## 15. DISTANCE FROM PROPOSED\*

LOCATION TO NEAREST

PROPERTY OR LEASE LINE, FT.

(Also to nearest drlg. unit line, if any)

790'

## 18. DISTANCE FROM PROPOSED LOCATION\*

TO NEAREST WELL, DRILLING, COMPLETED,  
OR APPLIED FOR, ON THIS LEASE, FT.

2500'

## 21. ELEVATIONS (Show whether DF, RT, GR, etc.)

5740' GR ungraded

DRILLING OPERATIONS AUTHORIZED ARE

SUBJECT TO COMPLIANCE WITH ATTACHED

"GENERAL REQUIREMENTS"

## 22. APPROX. DATE WORK WILL START\*

Fall, 1984

## 23.

## PROPOSED CASING AND CEMENTING PROGRAM

This action is subject to administrative

appeal pursuant to 30 CFR 290.

SIZE OF HOLE	SIZE OF CASING	WEIGHT PER FOOT	SETTING DEPTH	QUANTITY OF CEMENT
9-7/8"	7"	17#	100'	Cement to the surface
6-1/4"	4-1/2"	9.5#	1,465'	Cement to the surface

It is proposed to drill the above referenced well with rotary tools from the surface to T.D.. The anticipated zone of completion is the Pictured Cliffs formation. Attached is the 10 Point Drilling Plan and 13 Point Surface Use Plan.

RECEIVED  
OCT 05 1984  
OIL CON. DIV.  
DIST. 3

IN ABOVE SPACE DESCRIBE PROPOSED PROGRAM: If proposal is to deepen or plug back, give data on present productive zone and proposed new productive zone. If proposal is to drill or deepen directionally, give pertinent data on subsurface locations and measured and true vertical depths. Give blowout preventer program, if any.

## 24.

SIGNED

(This space for Federal or State office use)

TITLE Administrator, Field

Service

DATE

9/14/84

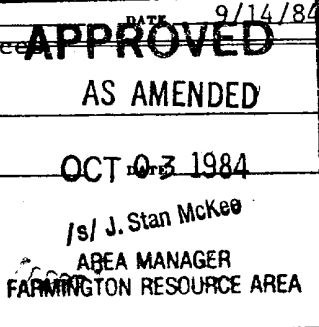
PERMIT NO.

APPROVAL DATE

APPROVED BY

TITLE

CONDITIONS OF APPROVAL, IF ANY:



NMOCC

## OIL CONSERVATION DIVISION

STATE OF NEW MEXICO  
ENERGY AND MINERALS DEPARTMENTP. O. BOX 2088  
SANTA FE, NEW MEXICO 87501Form C-107  
Revised 10-1-78

All distances must be from the outer boundaries of the Section.

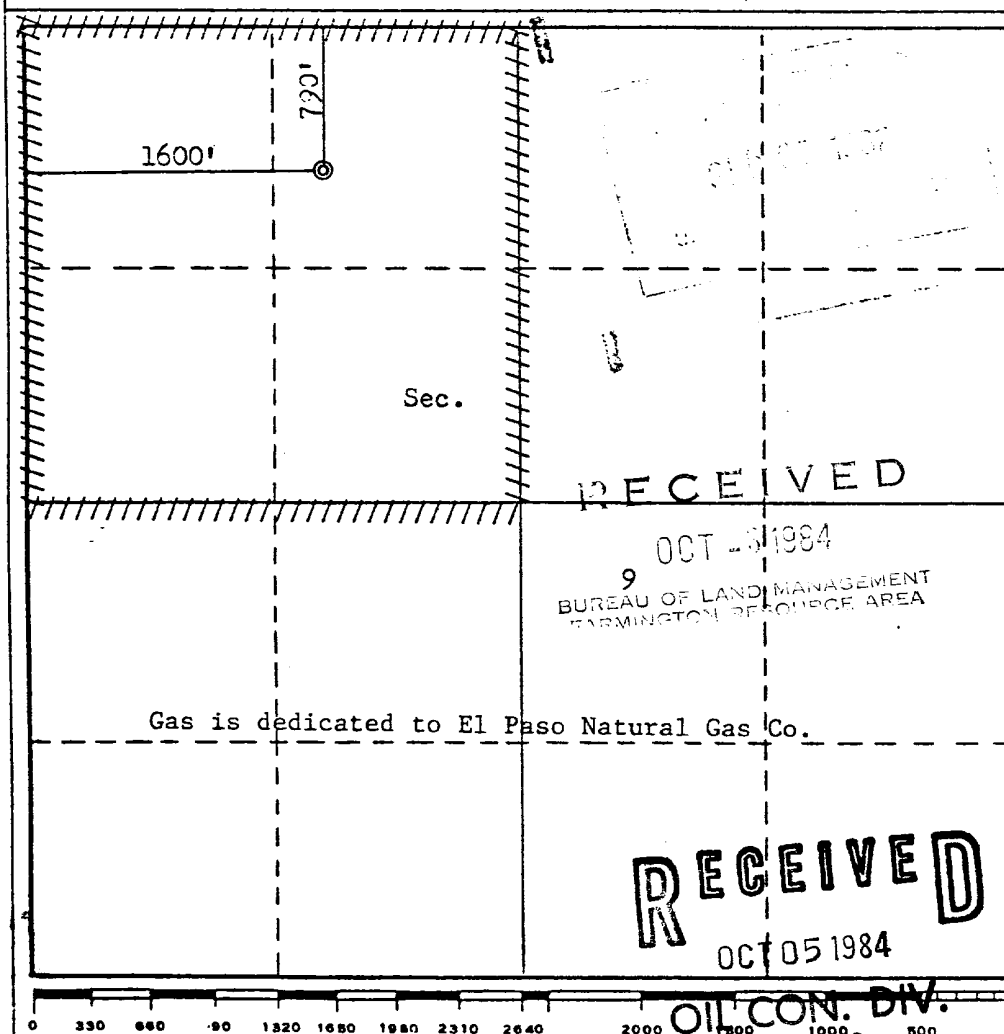
Operator ENERGY RESERVES GROUP, INC.			Lease GALLEGOS CANYON UNIT		Well No. 338
Unit Letter C	Section 9	Township 27N	Range 12W	County San Juan	
Actual Footage Location of Well: 790 feet from the North line and 1600 feet from the West line					
Ground Level Elev. 5740	Producing Formation Pictured Cliffs		Pool West Kutz Pictured Cliffs		Dedicated Acreage: 160 Acres

1. Outline the acreage dedicated to the subject well by colored pencil or hachure marks on the plat below.
2. If more than one lease is dedicated to the well, outline each and identify the ownership thereof (both as to working interest and royalty).
3. If more than one lease of different ownership is dedicated to the well, have the interests of all owners been consolidated by communitization, unitization, force-pooling, etc?

☐ Yes ☐ No If answer is "yes," type of consolidation \_\_\_\_\_

If answer is "no," list the owners and tract descriptions which have actually been consolidated. (Use reverse side of this form if necessary.) \_\_\_\_\_

No allowable will be assigned to the well until all interests have been consolidated (by communitization, unitization, forced-pooling, or otherwise) or until a non-standard unit, eliminating such interests, has been approved by the Commission.



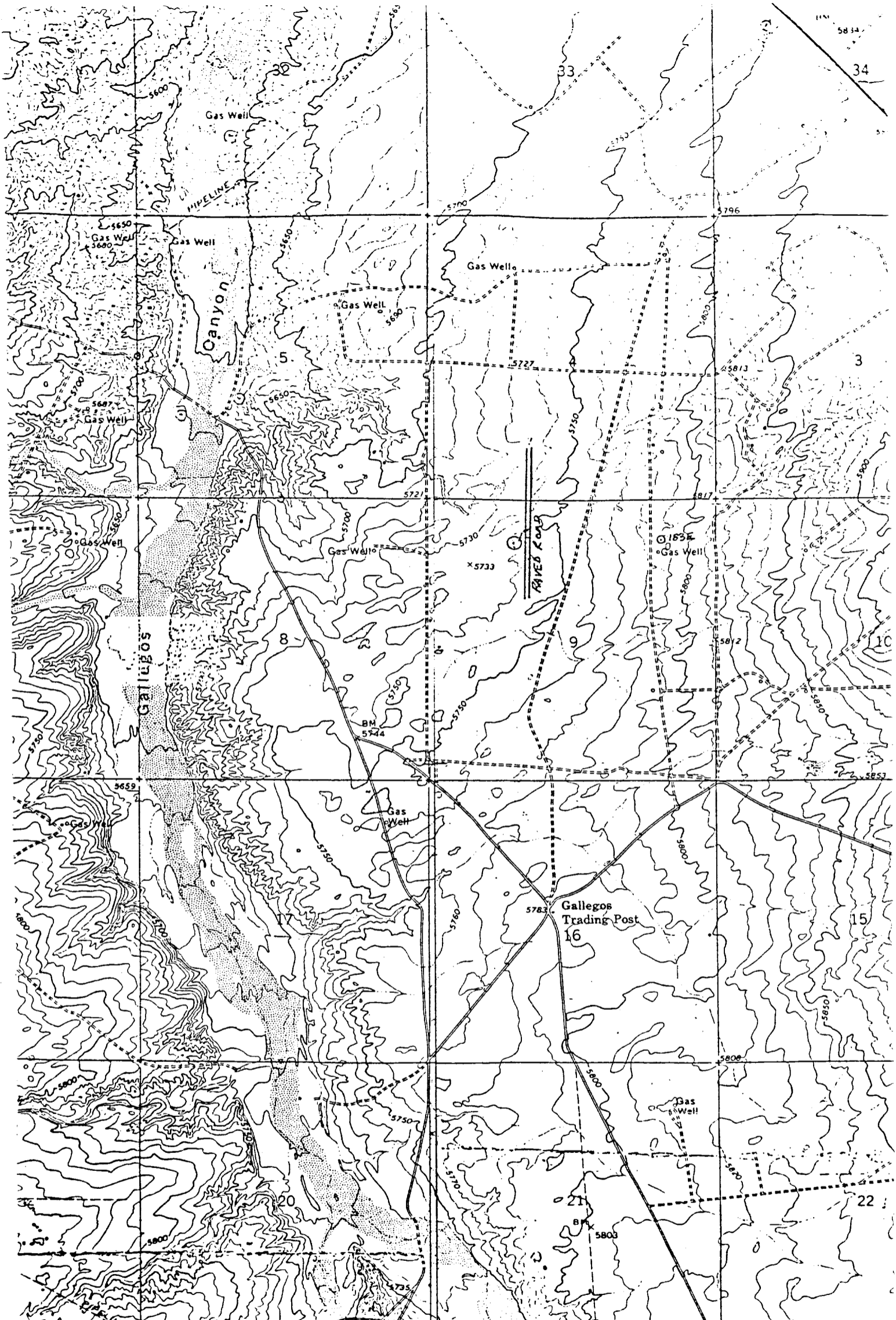
## CERTIFICATION

I hereby certify that the information contained herein is true and complete to the best of my knowledge and belief.

Name  
*William J. Hays*  
Position  
Field Services Administrator  
Company  
Energy Reserves Group, Inc.  
Date  
May 4, 1982

I hereby certify that the well location shown on this plat was plotted from field notes of actual surveys made by me or under my supervision, and that the same is true and correct to the best of my knowledge and belief.

Date Surveyed  
April 2, 1982  
Registered Professional Engineer  
and/or Land Surveyor  
*Fred B. Kern Jr.*  
Certificate No.  
3950



Vicinity Map for  
ENERGY RESERVES GROUP INC. #338 GALLEGOS CANYON UNIT  
790'FNL 1600'FWL Sec. 9-T27"-R12W  
SAN JUAN COUNTY, NEW MEXICO