

UNITED STATES
DEPARTMENT OF THE INTERIOR
GEOLOGICAL SURVEY

30-245-26187

APPLICATION FOR PERMIT TO DRILL, DEEPEN, OR PLUG BACK

1a. TYPE OF WORK
 DRILL DEEPEN PLUG BACK

b. TYPE OF WELL
 OIL WELL GAS WELL OTHER SINGLE ZONE MULTIPLE ZONE

2. NAME OF OPERATOR
 Amoco Production Company

3. ADDRESS OF OPERATOR
 501 Airport Drive Farmington, NM 87401

4. LOCATION OF WELL (Report location clearly and in accordance with any State requirements*)
 At surface
 1840' FSL x 980' FWL
 At proposed prod. zone

14. DISTANCE IN MILES AND DIRECTION FROM NEAREST TOWN OR POST OFFICE
 Approximately 8 miles south of Farmington

15. DISTANCE FROM PROPOSED* LOCATION TO NEAREST PROPERTY OR LEASE LINE, FT. (Also to nearest drig. unit line, if any)
 980'

16. NO. OF ACRES IN LEASE
 152.24

17. NO. OF ACRES ASSIGNED TO THIS WELL
 320 W 3042B

18. DISTANCE FROM PROPOSED* LOCATION TO NEAREST WELL, DRILLING, COMPLETED, OR APPLIED FOR, ON THIS LEASE, FT.
 2500' NE

19. PROPOSED DEPTH
 6050'

20. ROTARY OR CABLE TOOLS
 Rotary

21. ELEVATIONS (Show whether DF, RT, GR, etc.)
 DRILLING OPERATIONS AUTHORIZED ARE 5738' GL

22. APPROX. DATE WORK WILL START*
 as soon as permitted

SUBJECT TO COMPLIANCE WITH ATTACHED "GENERAL REQUIREMENTS" PROPOSED CASING AND CEMENTING PROGRAM

This action is subject to administrative appeal pursuant to 30 CFR 290.

SIZE OF HOLE	SIZE OF CASING	WEIGHT PER FOOT	SETTING DEPTH
12 1/4"	8 5/8" (NEW)	24 # K-55	300'
7 7/8"	4 1/2" (NEW)	10.5# K-55	6050'

QUANTITY OF CEMENT
 355 cu.ft. Class 'B' w/2% CaCl₂-c
 Stage 1-540 cu.ft. Class 'B' w/
 50:50 POZ, 6% gel, 2# med tuf plug
 /sx, and 0.8% FLA/ Tail in w/118
 cu.ft. Class 'B' Neat-circ.
 Stage 2-1380 cu.ft. Class 'B' w/
 65:35 POZ, 6% gel, 2# med tuf plug
 /sx, and 0.8% FLA/ Tail in w/ 118
 cu.ft. Class 'B' Neat-circ.
 DV Tool set at 4150'

Amoco proposes to drill the above well to further develop the Basin Dakota reservoir. The well will be drilled to the surface casing point using native mud. The well will then be drilled to TD with a low solids nondispersed mud system. Completion design will be based on open hole logs. Copies of all logs will be filed upon completion. Amoco's standard blowout prevention will be employed; see attached drawing for blowout preventer design.

Upon completion the well location will be cleaned and the reserve pit filled and leveled.

Gas produced from this well is dedicated to El Paso Natural Gas under contract No. 56,742.

IN ABOVE SPACE DESCRIBE PROPOSED PROGRAM: If proposal is to deepen or plug back, give data on present productive zone and proposed new productive zone. If proposal is to drill or deepen directionally, give pertinent data on subsurface locations and measured and true vertical depths. Give blowout preventer program, if any.

24. Original Signed By
 SIGNED B. D. Shaw TITLE Administrative Supervisor DATE May 31, 1984

(This space for Federal or State Office use)

PERMIT NO. _____ APPROVAL DATE _____

APPROVED BY _____ DATE JAN 14 1985

CONDITIONS OF APPROVAL, IF ANY:

Oil CON. DIV.
DIST. 3

(SGD.) MAT MILLENBACH
M. MILLENBACH
AREA MANAGER

NMOCC

OIL CONSERVATION DIVISION

P. O. BOX 2088

Form C-107
Revised 10-1-78

STATE OF NEW MEXICO
ENERGY AND MINERALS DEPARTMENT

SANTA FE, NEW MEXICO 87501

All distances must be from the outer boundaries of the Section.

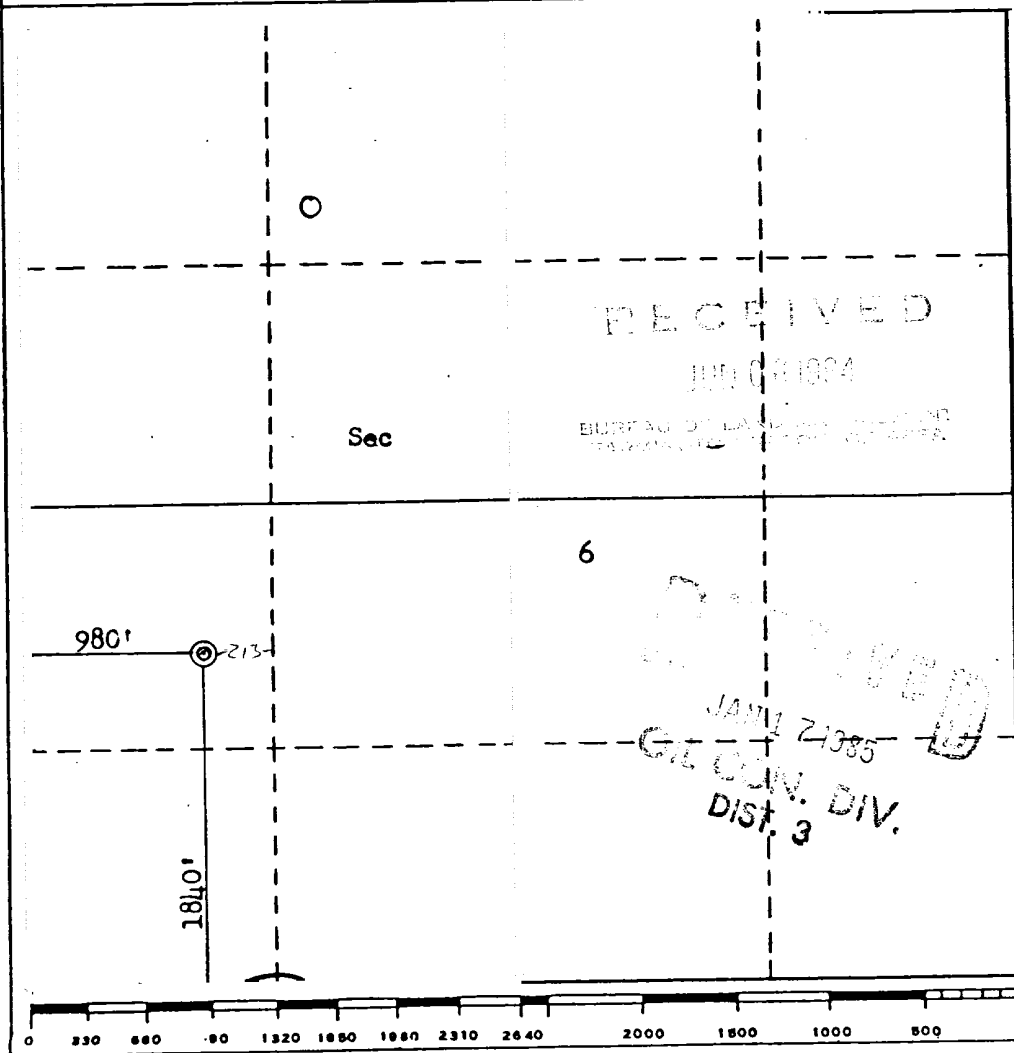
Operator Amoco Production Co.		Lease Gallegos Canyon Unit			Well No. 89E
Unit Letter L	Section 6	Township 27N	Range 12W	County San Juan	
Actual Footage Location of Well: 1840 feet from the South line and 980 feet from the West line					
Ground Level Elev. 5738	Producing Formation Dakota		Pool Basin Dakota		Dedicated Acreage: 320 304.28 Acres

1. Outline the acreage dedicated to the subject well by colored pencil or hachure marks on the plat below.
2. If more than one lease is dedicated to the well, outline each and identify the ownership thereof (both as to working interest and royalty).
3. If more than one lease of different ownership is dedicated to the well, have the interests of all owners been consolidated by communitization, unitization, force-pooling, etc?

Yes No If answer is "yes," type of consolidation Unitized

If answer is "no," list the owners and tract descriptions which have actually been consolidated. (Use reverse side of this form if necessary.) _____

No allowable will be assigned to the well until all interests have been consolidated (by communitization, unitization, forced-pooling, or otherwise) or until a non-standard unit, eliminating such interests, has been approved by the Commission.



CERTIFICATION

I hereby certify that the information contained herein is true and complete to the best of my knowledge and belief.

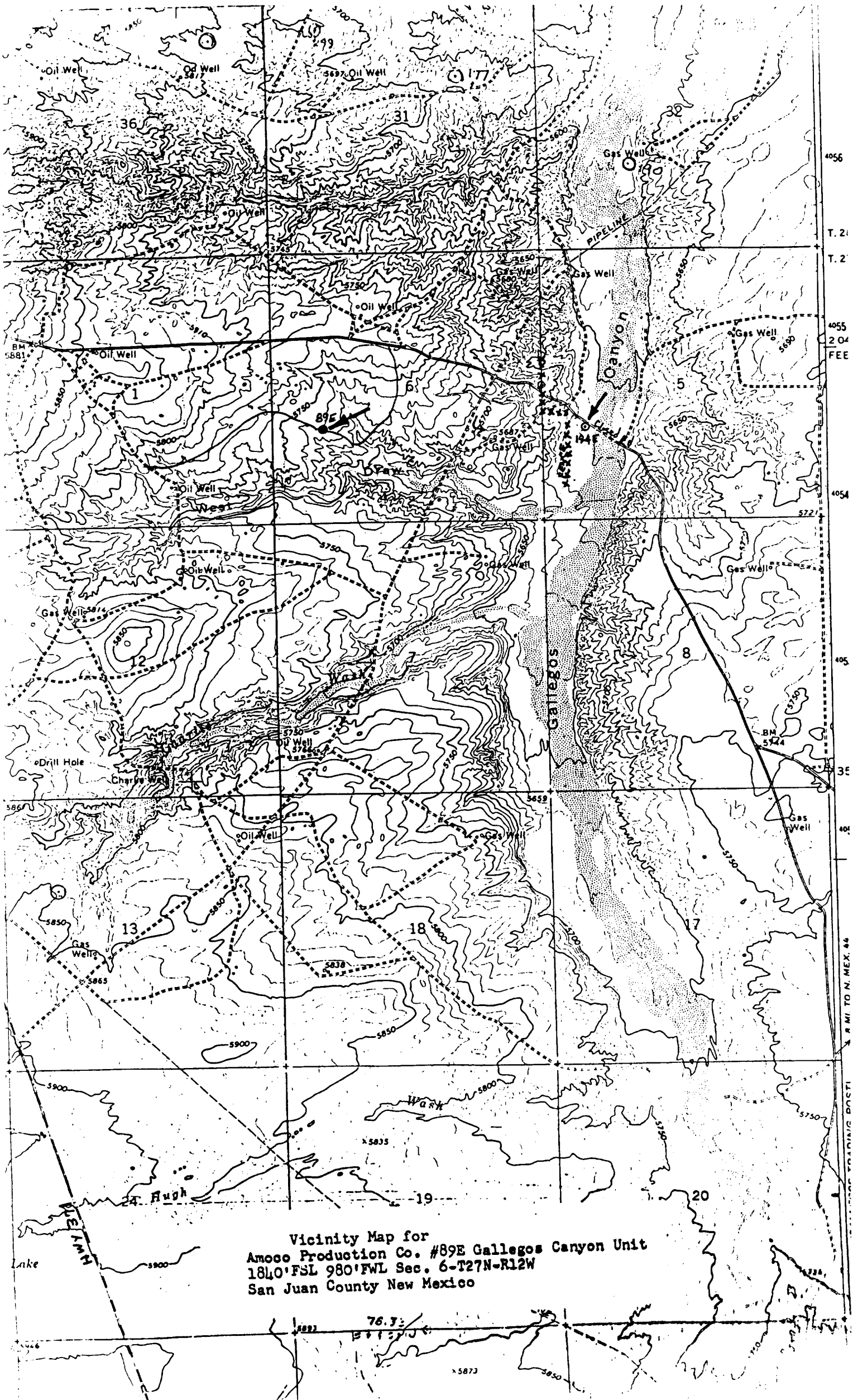
Original Signed By

B. D. Shaw

Name	B. D. Shaw
Position	Administrative Supervisor
Company	Amoco Production Company
Date	May 31, 1984

I hereby certify that the well location shown on this plat was plotted from field notes of actual surveys made by me or under my supervision, and that the same is true and correct to the best of my knowledge and belief.

Date Surveyed	December 1983
Registered Professional Engineer and/or Land Surveyor	<i>Fred B. Kerr Jr.</i> Fred B. Kerr Jr.
Certificate No.	3950



Vicinity Map for
 Amoco Production Co. #89E Gallegos Canyon Unit
 1840' FSL 980' FWL Sec. 6-T27N-R12W
 San Juan County New Mexico

4056
 T. 21
 T. 2
 4055
 204
 FEE
 4054
 5721
 405
 3E
 404
 5100
 5750
 4 MI TO N. MEX. 44

SECTIONAL BOUNDARY

76.7

5873